



SHIP SAFETY BULLETIN

Bulletin No.: 17/2020
RDIMS No.: 16500991
Date: 2020-06-15
Y - M - D

We issue Ship Safety Bulletins for the marine community. Visit our Website at www.tc.gc.ca/ssb-bsn to view existing bulletins and to sign up to receive e-mail notices of new ones.



Subject: SHELTERED WATERS VOYAGES

This bulletin is withdrawn with the coming into force of the [Vessel Safety Certificates Regulations](#) on June 23, 2021

This bulletin replaces Ship Safety Bulletin No. [08/2017](#)

Scope

This SHIP SAFETY BULLETIN informs vessel owners and operators that Transport Canada now recognizes certain near coastal voyage, Class 2 voyages, as sheltered waters voyages.

Background

A sheltered waters voyage is one on waters we have found to be low risk. Vessels that operate only on sheltered waters voyages may be subject to reduced safety requirements due to this low risk environment.

Transport Canada is updating the *Vessel Certificates Regulations* to propose a broader definition of a sheltered waters voyage and to expand the sheltered waters voyages schedules.

These proposed changes mean that some waters currently classified as near coastal voyage, Class 2 voyages would be classified as sheltered waters voyages.

Since we don't expect the proposed Regulations to be published until 2021, Transport Canada Marine Safety and Security has published the policy on recognizing certain near coastal voyage, Class 2 voyages as sheltered waters voyages. This allows industry to benefit from the proposed changes right away.

The policy:

Keywords:

1. Sheltered waters voyage
2. Near coastal voyage, Class 2
3. Vessel Certificates Regulations

Questions concerning this Bulletin should be addressed to:

AMSD
1-855-859-3123

Transport Canada
Marine Safety and Security
Tower C, Place de Ville
330 Sparks Street, 11th Floor
Ottawa, Ontario K1A 0N8

Contact us at: marinesafety-securitemaritime@tc.gc.ca or 1-855-859-3123 (Toll Free).



- Recognizes voyages that fit into the definition below as sheltered waters voyages:

A voyage in Canada, on a lake or a river above tidal waters, where a vessel can **never** be further than 2.5 nautical miles from shore (measured either from the mainland or from an island the vessel can use as a safe refuge from the weather); and

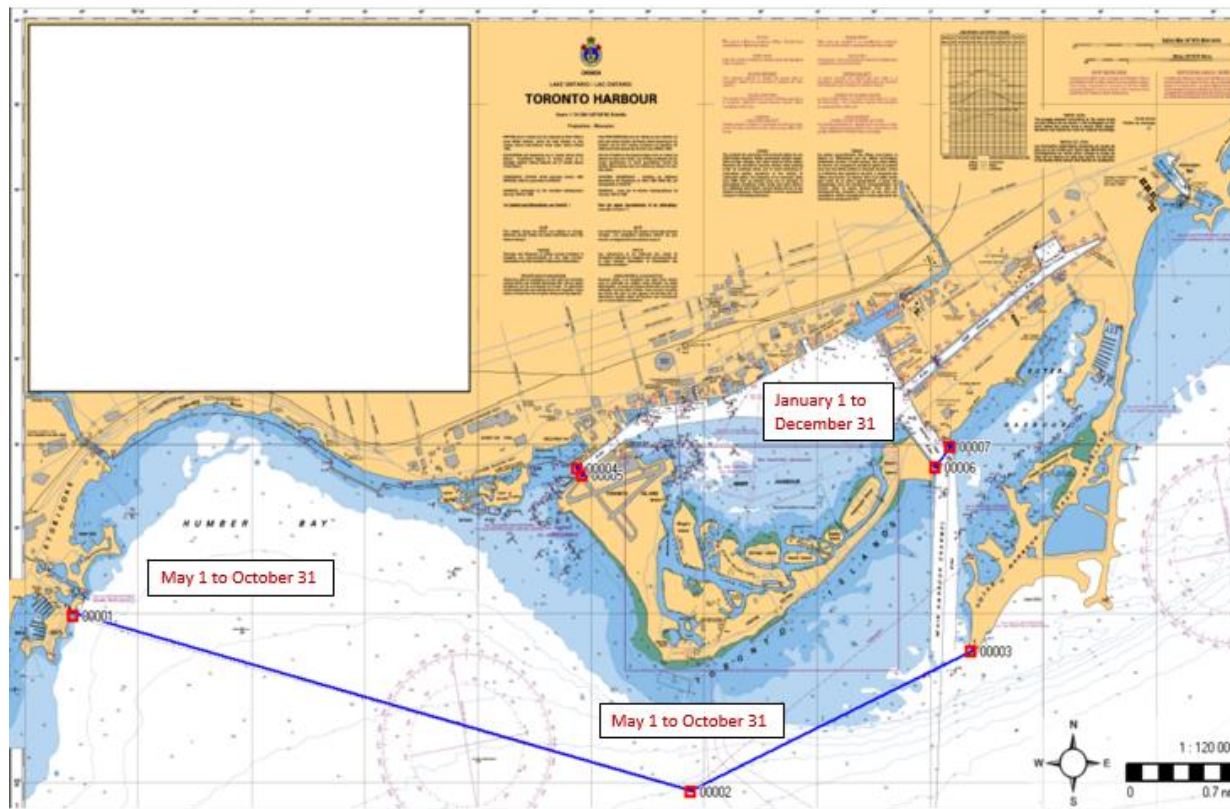
- Adds waters in the Additional Information section below, to the waters already listed in Schedule 1 of the *Vessel Certificates Regulations*. Additions and revisions made since the last bulletin and a chart excerpt for Toronto Harbour area has been included.

Additional Information

SHELTERED WATERS VOYAGES — WATERS

ONTARIO

| Column 1 Waters | Column 2 Period |
|---|--|
| The waters of Georgian Bay east of a line drawn in a northerly direction from the mainland at 44°51.5'N, 80°0.5'W to the southern tip of Giants Tomb Island and south of a line drawn from the northern tip of Giants Tomb Island to the mainland at Cognashene Point, including the waters of Severn Sound and Penetanguishene and Midland Harbours | Beginning on May 1 and ending on October 31 |
| The waters of Lake Huron south of the US navigation light #7 (Lake Huron Cut) west of longitude 82°24'W and north of the Fort Gratiot navigation light | Beginning on May 15 and ending on October 15 |
| The waters of the St. Clair River and the Detroit River south of the Ft. Gratiot Light and north of latitude 42°3'N at Bar Point, but not including Lake St. Clair | Beginning on January 1 and ending on December 31 |
| (8) The waters between the mainland and Toronto Island (Toronto Inner Harbour) bounded in the west by the Western Gap with a line drawn between a point at 43°37.86'N, 79°24.13'W thence to 43°37.82'N, 79°24.08'W, and bounded in the east by the Eastern Gap with a line drawn between a point at 43°37.87'N, 79°20.96'W thence to 43°37.99'N, 79°20.83'W | Beginning on January 1 and ending on December 31 |
| (8.1) The waters of Lake Ontario, excluding the waters referred to in item 8, north of a line drawn between the following coordinates: 43°36.99'N, 79°28.59'W thence to 43°35.95'N, 79°23.13'W and thence to 43°36.78'N, 79°20.65'W | Beginning on May 1 and ending on October 31 |



| | |
|--|---|
| <p>The waters of Presqu'ile Bay near Brighton, west of a line drawn due north from Presqu'ile Point</p> | <p>Beginning on January 1 and ending on December 31</p> |
| <p>The Bay of Quinte, North Channel and all connecting waters, bounded in the east by a line drawn from Pleasant Point on the Cressy Point Peninsula to Pig Point on Amherst Island, then along the shoreline to the eastern extremity of Amherst Island, (44°10.8'N, 76°37.1'W) then to Salmon Island, and then to Carruthers Point on the mainland shore near Kingston</p> | <p>Beginning on January 1 and ending on December 31</p> |
| <p>The waters of Lake Ontario in the vicinity of Wolfe Island that are:</p> <ul style="list-style-type: none"> a) east of a line drawn from Nine Mile Point on Simcoe Island to Long Point on Wolfe Island, then to Bear Point on Wolfe Island, and b) west of a line drawn from Staley Point in Boat Channel true northwest to a point on the Simcoe Island shore | <p>Beginning on May 1 and ending on October 31</p> |
| <p>The waters of the St. Lawrence River, other than the portions of Lake St. Francois that are in the province of Quebec:</p> <ul style="list-style-type: none"> a) northeast of a line drawn from Carruthers Point, on the mainland shore near Kingston, to Salmon Island then to Snake Island and then to Nine Mile Point on Simcoe Island; b) northeast of a line drawn from Staley Point in Boat | <p>Beginning on January 1 and ending on December 31</p> |

| | |
|---|--|
| <p>Channel true northwest to a point on the Simcoe Island shore; and c) north of a line drawn from the southernmost extremity of Wolfe Island at Bear Point to Tibbetts Point on the United States mainland.</p> | |
|---|--|

QUEBEC

| Column 1 Waters | Column 2 Period |
|--|--|
| The waters of the Saguenay River west of a line running between Pointe Noire (48°7.433'N, 69°42.979'W) and Pointe Rouge (48°8.098'N, 69°42.08'W) | Beginning on January 1 and ending on December 31 |
| The waters of the Mingan Archipelago bounded on the west by longitude 64°14'W, on the east by longitude 63°27'W and on the south by latitude 50°10'N | Beginning on May 1 and ending on September 30 |
| The waters of Sept Îles Bay as far as a line drawn between the following coordinates: 50°8.5'N, 66°31.5'W to 50°4.5'N, 66°23.5'W thence to 50°8'N, 66°15'W and thence to 50°12.8'N, 66°13.5'W | Beginning on January 1 and ending on December 31 |
| The waters of Plaisance Bay (Magdalen Islands) bounded in the east by a line drawn from Cap Moine-Qui-Prie (47°23.434'N, 61°46.395'W) to northern extremity of Black Head on L'Île-d'Entrée (47°17.295'N, 61°41.396'W) and thence along the west shore of L'Île-d'Entrée to the wharf at 47°16.643'N, 61°43.1'W and thence to the northeastern tip of Dune Sandy Hook (47°16.135'N, 61°46.779'W) | Beginning on May 1 and ending on September 30 |

NOVA SCOTIA

| Column 1 Waters | Column 2 Period |
|---|--|
| The waters of the LaHave River north of a line drawn from the light at 44°16.03'N, 64°19.83'W to a point at 44°15.8'N, 64°22.1'W | Beginning May 1 and ending August 31 |
| The waters inside a line joining the Eastern extremity of Country Harbour Head (45°7.42'N, 61°38.73'W) to a point at Harbour Island (45°8.2'N, 61°37'W) and a line drawn from 45°8.3'N, 61°36.16'W, near Burke Point, to the light near Darby Point | Beginning March 1 and ending November 30 |

| | |
|--|---|
| The waters of St-Anns Harbour inside a line joining Bar Point (46°17.80'N, 60°31.91'W) to a point at St. Anne's Beach (46°17.72'N, 60°32.52'W) and including all waters of Jersey Cove | Beginning March 1 and ending October 31 |
| The waters of Inner Sydney Harbour south of a line drawn between Amelia Point (46°9.04'N, 60°13.26'W) and Battery Point (46°9.05'N, 60°12.20'W) | Beginning on May 1 and ending on October 31 |
| The waters of St. Margaret's Bay north of a line drawn between Tilley Point (44°32.300'N, 64°1.000'W) and Mackerel Point (44°32.118'N, 63°56.800'W) | Beginning on May 1 and ending September 30 |

NEW BRUNSWICK

| Column 1 Waters | Column 2 Period |
|--|---|
| The waters of Little Shemogue Harbour inside a line drawn between a point at 46°10.201'N, 64°04.048'W on the east side Little Shemogue Harbour and a point at 46°10.241'N, 64°05.091'W the west side of Little Shemogue Harbour | Beginning on April 1 and ending December 31 |
| The waters of Shemogue Harbour inside a line drawn between Shemogue Head 46°11'N, 64°7.2'W and Little Cape 46°10.879'N, 64°08.503'W | Beginning on April 1 and ending December 31 |
| The waters of L'Aboiteau inside a line drawn between a point at 46°13.885'N, 64°17.875'W on the east side of L'Aboiteau and a point at 46°13.889'N, 64°17.951'W on the west side of L'Aboiteau Harbour | Beginning on April 1 and ending December 31 |
| The waters of Kouchibouguac River inside a line drawn between a point at 46°13.35'N, 64°21.933'W on the east side of Kouchibouguac River and Robichaud Wharf (46°13.889'N, 64°23'W) | Beginning on April 1 and ending December 31 |
| The waters of Aboujagane River inside a line drawn between Robichaud Wharf (46°13.889'N, 64°23'W) and a point at 46°13.510'N, 64°23.552'W on the west side of Aboujagane River | Beginning on April 1 and ending December 31 |
| The waters of Shediac Bay inside a line drawn between Pointe-du-Chêne (46°14.5'N, 64°30.8'W and Pointe Grande-Digue (46°17.404'N, 64°32.064'W) | Beginning on April 1 and ending December 31 |
| The waters of Cocagne Harbour inside a line drawn from Pointe-aux-Renards (46°22.026'N, 64°33.733'W) to a point at 46°22.466'N, 64°34.9'W on the east side of Cocagne Island and from a point at 46°23.972'N, 64°36.666'W on the north | Beginning on April 1 and ending December 31 |

| | |
|--|---|
| west side of Cocagne Island to Comierville Wharf (46°24.5'N, 64°36.933'N) | |
| The waters of Buctouche Harbour and connecting waters inside a line drawn between a point at 46°27.633'N, 64°36.716'W on the south east side of Dunne de Buctouche and Saint-Thomas-de-Kent Wharf (46°26.855'N, 64°38.215'W) | Beginning on April 1 and ending December 31 |
| The waters of Richibucto Harbour and connecting waters inside a line drawn between a point at 46°42.583'N, 64°47.383'W on South Richibucto Beach and a point at 46°42.933'N, 64°47.383'W on North Richibucto Dune | Beginning on April 1 and ending December 31 |
| The waters of Baie de Saint-Louis and connecting waters inside a line drawn between a point at 46°46.999'N, 64°51.594'W on North Richibucto Dune and a point at 46°46.966'N, 64°52.382'W on South Richibucto Dune | Beginning on April 1 and ending December 31 |
| The waters of Kouchibouguac Bay and connecting waters inside a line drawn between a point at 46°50.221'N, 64°54.599'W on South Kochibouguac Dune and a point at 46°50.633'N, 64°54.833'W on North Kouchibouguac Dune | Beginning on April 1 and ending December 31 |
| The waters of Rivière au Portage inside a line drawn between a point at 46°54.974'N, 64°53.365'W on the south side of Rivière au Portage and a point at 46°55.017'N, 64°53.326'W on the North side of Rivière au Portage | Beginning on April 1 and ending December 31 |
| The waters of Escuminac River inside a line drawn between a point at 47°03.467'N, 64°49.533'W on the south side of Escuminac River and a point at 47°03.485'N, 64°49.494'W on the north side of Escuminac River | Beginning on April 1 and ending December 31 |

MANITOBA

| Column 1 Waters | Column 2 Period |
|--------------------------------------|--|
| Bolton Lake (54°16'N, 95°47'W) | Beginning on May 1 and ending on September 30 |
| Joint Lake (54°22.55'N, 95°24.766'W) | Beginning on May 1 and ending on September 30 |
| Munroe Lake (59°11.8'N, 98°33.25'W) | Beginning on June 1 and ending on September 30 |

BRITISH COLUMBIA

| Column 1 Waters | Column 2 Period |
|--|--|
| The waters of the Strait of Georgia, Burrard Inlet and the Fraser River that are north of the border between Canada and the United States at the 49th parallel and east of longitude 123°22.666'W, but not including the waters of Boundary Bay | Beginning on January 1 and ending on December 31 |
| The waters of Howe Sound north of a line drawn from Gower Point to Cape Roger Curtis on Bowen Island, thence across Bowen Island to Point Cowan, and thence from Point Cowan to Point Atkinson | Beginning on June 1 and ending on September 30 |
| <p>In the vicinity of Prince Rupert:</p> <p>(a) the waters of Chatham Sound that are north of latitude 54°8.583'N and east of longitude of 130°26.883'W;</p> <p>(b) the waters of Prince Rupert Harbour and connecting waters, east of a line drawn between Straith Point (54°18.483'N, 130°28.4'W) and Observation Point (54°20.13'N, 130°27.7'W); and</p> <p>(c) Inverness Passage north of Osborn Point (54°09.034'N, 130°09.292'W) on Smith Island</p> | Beginning on January 1 and ending on December 31 |
| <p>The waters that are</p> <p>a) in Lama Passage north of line drawn true east from Napier Point (52°7.90'N, 128°8.03'W) on Campbell Island to the Denny Island shore;</p> <p>b) in Gunboat Passage south and west of line joining Georgie Point (52°11.12'N, 127°53.08'W) on Denny Island and Madigan Point (52°11.38'N, 127°53.50'W) on Cunningham Island;</p> <p>c) in Troup Passage south of Troup Narrows;</p> <p>d) in Seaforth Channel east of line joining Christiansen Point (52°14.21'N, 128°10.88'W) and Lay Point (52°12.78'N, 128°10.36'W); and</p> <p>e) in all connecting waters.</p> | Beginning on January 1 and ending on December 31 |
| All the waters of Kitimat Arm & Kildala Arm, north of a line drawn from Hilton Point (53°48.9'N, 128°52.266'W) through Louis Point (53°49.133'N, 128°45.633'W) on Coste Island to Steel Point (53°49.883'N, 128°42.333'W) on the mainland | Beginning on January 1 and ending on December 31 |
| All the waters of the Portland Canal near Stewart, British Columbia north of a line drawn from Glacier Point (55°49.133'N, 130°06.633'W) to Engineers Point on the | Beginning on January 1 and ending on December 31 |

| | |
|---|--|
| opposite shore | |
| <p>The waters of Nootka Sound, Muchalat Inlet, Tlupana Inlet, Tahsis Inlet, Zeballos Inlet, Hecate Channel and connecting waters that are:</p> <p>a) east of a line drawn from Steamer Point (49°53.183'N, 126°47.883'W) true northwest to the opposite shore; and</p> <p>b) north of a line drawn from Yuquot Point on Nootka Island in an eastward direction to Burdwood Point on the Vancouver Island shore.</p> | Beginning on January 1 and ending on December 31 |
| <p>The waters of Comox Harbour west of a line drawn from the navigation light on Goose Spit (49°39.618'N, 124°55.505'W) true south to the Vancouver Island shore.</p> | Beginning on July 1 and ending on October 31 |

PRINCE EDWARD ISLAND

| Column 1 Waters | Column 2 Period |
|---|--|
| The waters of South Lake inside a line drawn between 46°24.45'N, 62°03.466'W and 46°24.3'N, 62°03.766'W | Beginning on April 1 and ending on December 31 |
| The waters of Colville Bay and Souris River inside a line drawn between Lobster Point (46°20.6'N, 62°16.2'W) and Swanton Point (46° 20.533'N, 62°14.4'W) | Beginning on April 1 and ending on December 31 |
| The waters of Rollo Bay inside a line drawn between Howe Point (46°18.266'N, 62°20'W) and Sheep Head (46°20.033'N, 62°17.7'W) | Beginning on April 1 and ending on December 31 |
| The waters of Howe Bay inside a line drawn between Durell Point (46°16.55'N, 62°21.4'W) and Howe Point (46°18.266'N, 62°20'W) | Beginning on April 1 and ending on December 31 |
| The waters of Spry Cove inside a line drawn between Spry Point (46°15.045'N, 62°22.53'W) and Durell Point (46°16.55'N, 62°21.4'W) | Beginning on April 1 and ending on December 31 |
| The waters of Boughton River inside a line drawn between Solander Point (46°14.55'N, 62°25.25'W) and Spry Point (46°15.045'N, 62°22.53'W) | Beginning on April 1 and ending on December 31 |
| The waters of Georgetown Harbour and connecting waters inside a line drawn from Launching Point (46°12.766'N, 62°24.466'W) to Boughton Spit (46°11.766'N, 62°25.9'W) to Panmure Head (46°08.7'N, 62°28'W) | Beginning on April 1 and ending on December 31 |
| The waters of Murray Harbour inside a line drawn between Sable Point (46°01.366'N, 62°29'W) and Old Store Point (46°01.3'N, 62°28.733'W) and a line drawn between 46°2.15'N, 62°29.01'W and 46°1.912'N, 62°29.256'W | Beginning on April 1 and ending on December 31 |
| The waters of Belle River inside a line drawn between 45°58.45'N, 62°50.75'W and 45°58.4'N, 62°50.72'W | Beginning on April 1 and ending on December 31 |
| The waters of Flat River inside a line drawn between Jenyns Point (46°00.05'N, 62°53.616'W) and 46°00.894'N, 62°53.818'N | Beginning on April 1 and ending on December 31 |
| The waters of Pinette Harbour and connecting waters inside a line drawn between Pond Point (46°03.3'N, 62°57.333'W) and Pinette Point (46°02.55'N, 62°56.483'W) | Beginning on April 1 and ending on December 31 |

| | |
|--|---|
| <p>The waters of Orwell Bay inside a line drawn between Prim Point (46°03.166'N, 63°02.383'W) and Gallas Point (46°07.333'N, 62°57.733'W)</p> | <p>Beginning on April 1 and ending on December 31</p> |
| <p>The waters of Pownal Bay inside a line drawn between Gallas Point (46°07.333'N, 62°57.733'W) and Pownal Point (46°10.483'N, 62°59.2'W)</p> | <p>Beginning on April 1 and ending on December 31</p> |
| <p>The waters of Charlottetown Harbour inside a line drawn between Canceaux Point (46°12.488'N, 63°08.623'W) and Battery Point (46°12.438'N, 63°7.569'W)</p> | <p>Beginning on April 1 and ending on December 31</p> |
| <p>The waters of West Hillsborough Bay inside a line drawn from Holland Cove Point (46°10.911'N, 63°8.22'W) to North Point, St. Peters Island (46°07.7'N, 63°10.4'W) to Rice Point (46°07.883'N, 63°13.25'W)</p> | <p>Beginning on April 1 and ending on December 31</p> |
| <p>The waters of Tyron River inside a line drawn between Birch Point (46°12.116'N, 63°31.666'W) and Tryon Head (46°12.343'N, 63°32.749'W)</p> | <p>Beginning on April 1 and ending on December 31</p> |
| <p>The waters of Cape Traverse inside a line drawn between Bells Point (46°13.22'N, 63°39.279'W) and 46°13.96'N, 63°39.228'W</p> | <p>Beginning on April 1 and ending on December 31</p> |
| <p>The waters of Summerside Harbour and connecting waters inside a line drawn between Graham Head (46°20.35'N, 63°48.933'W) and Phelan Point (46°23.4'N, 63°50'W)</p> | <p>Beginning on April 1 and ending on December 31</p> |
| <p>The waters of Miscouche Cove inside a line drawn between Phelan Point (46°23.4'N, 63°50'W) and Ives Point (46°23.56'N, 63°53.166'W)</p> | <p>Beginning on April 1 and ending on December 31</p> |
| <p>The waters of Sunbury Cove inside a line drawn between Ives Point (46°23.56'N, 63°53.166'W) and Sunbury Point (46°24.02'N, 63°56.475'W)</p> | <p>Beginning on April 1 and ending on December 31</p> |
| <p>The waters inside a line drawn between Maximville (46°25.816'N, 64°08.45'W) and Rocky Point (46°31.333'N, 64°06.75'W)</p> | <p>Beginning on April 1 and ending on December 31</p> |
| <p>The waters of Percival Bay inside a line drawn between Rocky Point (46°31.333'N, 64°06.75'W) and Grande Digue Point (46°35.097'N, 64°06.564'W)</p> | <p>Beginning on April 1 and ending on December 31</p> |
| <p>The waters of West Egmont Bay inside a line drawn between 46°36.95'N, 64°11.45'W and the West Point wharf breakwater (46°37.083'N, 64°22.333'W)</p> | <p>Beginning on April 1 and ending on December 31</p> |

| | |
|--|---|
| <p>The waters of Miminegash River and connecting waters inside a line drawn between 46°52.774'N, 64°14.028'W and 46°52.753'N, 64°14.032'W</p> | <p>Beginning on April 1 and ending on December 31</p> |
| <p>The waters of Skinners Pond inside a line drawn between 46°57.931'N, 64°07.507'W and 46°57.912'N, 64°07.537'W</p> | <p>Beginning on April 1 and ending on December 31</p> |
| <p>The waters of Tignish inside a line drawn between the northern breakwater (46°57'N 63°59.7'W) and the southern breakwater (46°56.9'N, 63°59.7'W)</p> | <p>Beginning on April 1 and ending on December 31</p> |
| <p>The waters of Little Tignish Run inside a line drawn between 46°56.163'N, 63°59.509'W and 46°56.147'N, 63°59.486'W</p> | <p>Beginning on April 1 and ending on December 31</p> |
| <p>The waters of Kildare Creek inside a line drawn between Creek Point (46°51.282'N, 64°00.494'W) and 46°51.216'N, 64°00.666'W</p> | <p>Beginning on April 1 and ending on December 31</p> |
| <p>The waters of Alberton Harbour, Cascumpec Bay, The Narrows, Malpeque Bay and connecting waters that are</p> <ul style="list-style-type: none"> a) inside a line drawn between Kildare Point (46°48.233'N, 64°02'W) and Alberton South Light (46°48.016'N, 64°02.161'W) b) inside a line drawn between the north side of Palmer's Inlet (46°45.233'N, 64°00.533'W) and the south side of Palmer's Inlet (46°44.846'N, 64°0.304'W) c) inside a line drawn between the north side of Conway Inlet (46°39.616'N, 63°52.75'W) and the south side of Conway Inlet (46°39.416'N, 63°52.183'W) d) inside a line drawn between a point at 46°34.433'N, 63°42.533'W on Billhook Island and Cape Aylesbury (46°34.074'N 63°40.056'W) | <p>Beginning on April 1 and ending on December 31</p> |
| <p>The waters of New London Bay inside a line drawn between a point at 46°30.853'N, 63°29.068'W on the west side of New London Bay and a point at 46°30.636'N, 63°28.073'W on the east side of New London Bay</p> | <p>Beginning on April 1 and ending on December 31</p> |
| <p>The waters of Rustico Bay inside a line drawn between a point at 46°27.416'N, 63°17.266'W on the west side of Rustico Bay and a point on the west end of Rustico Island (46°27.533'N, 63°15.35'W) and a line drawn between a point on the east end of Rustico Island (46°26.033'N, 63°14.033'W) and Brackley Point (46°25.911'N, 63°13.843'W)</p> | <p>Beginning on April 1 and ending on December 31</p> |
| <p>The waters of Covehead Bay inside a line drawn between a</p> | <p>Beginning on April 1 and</p> |

| | |
|--|--|
| point at 46°25.798'N, 63°08.878'W on the west side of Covehead Bay and Cape Stanhope (46°25.803'N, 63°08.791'W) | ending on December 31 |
| The waters of Tracadie Bay inside a line drawn between a point at 46°24.833'N, 63°02.616'W on Dalvay Beach and a point at 46°24.883'N, 63°02.3'W on the east side of Tracadie Bay | Beginning on April 1 and ending on December 31 |
| The waters of Savage Harbour inside a line drawn between a point at 46°25.972'N, 62°50.07'W on the west side of Savage Harbour and Savage Harbour Breakwater Light (46°26.02'N, 62°49.941'W) | Beginning on April 1 and ending on December 31 |
| The waters of Saint Peters Bay inside a line drawn between a point at 46°26.616'N, 62°44.466'W on the west side of Saint Peters Bay and a point at 46°26.71'N, 62°43.75'W on the east side of Saint Peters Bay | Beginning on April 1 and ending on December 31 |
| The waters of North Lake inside a line drawn between a point at 46°28.12'N, 62°04.129'W on the west side of North Lake Run and a point at 46°28.112'N, 62°04.091'W on the east side of North Lake Run | Beginning on April 1 and ending on December 31 |

SASKATCHEWAN

| | |
|--|--|
| Column 1 Waters | Column 2 Period |
| Candle Lake (53°49.67'N, 105°18.802'W) | Beginning on May 1 and ending on November 30 |

NEWFOUNDLAND AND LABRADOR

| | |
|--|---|
| Column 1 Waters | Column 2 Period |
| The waters of Bull Arm inside a line drawn from Stanton Point (47° 47.51' N, 53° 50.34' W) to Stock Cove Point (47°46.78' N, 53° 51.62' W) | Beginning on April 1 and ending on October 31 |

NORTHWEST TERRITORIES

| Column 1 Waters | Column 2 Period |
|--|--|
| Cli Lake (61°59'N, 123°18.083'W) | Beginning on June 1 and ending on September 30 |
| Duncan Lake (62°51'N, 113°58.066'W) | Beginning on June 1 and ending on September 30 |
| Kasba Lake (60°18'N, 102°7.016'W) | Beginning on June 1 and ending on August 31 |
| Lac La Martre (63°15'N, 117°55.083'W) | Beginning on June 1 and ending on September 30 |
| MacKay Lake (63°55.066'N, 110°25.05'W) | Beginning on July 1 and ending on September 30 |
| Mosquito Lake (62°36'N, 103°22.033'W) | Beginning on July 1 and ending on September 30 |
| Nonacho Lake (61°59'N, 109°28.05'W) | Beginning on June 1 and ending on September 30 |
| Point Lake (65°15.016'N, 113°4.066'W) | Beginning on July 1 and ending on September 30 |
| Stark Lake (62°28'N, 110°20.05'W) | Beginning on June 1 and ending on September 30 |
| The waters of Christie Bay, Great Slave Lake northeast of a line drawn from Utsingi Point (62°21.116'N, 111°40.774'W) true south to a point on the north shore of Etthen Island at 62°20.049'N, 111°40.776'W, and from the southwest point of Etthen Island (62°9.709'N, 111°52.536'W) to Pekanatui Point (62°8.12'N, 111°38.633'W) and thence due east to a point on the mainland shore at 62°8.113'N, 111°36.337'W | Beginning on June 1 and ending on September 30 |
| The waters of Great Slave Lake and its outflow into the Mackenzie River west of longitude 116°25'W and east of the Deh Cho Bridge | Beginning on June 1 and ending on September 30 |
| The waters of the Mackenzie River, including Mills Lake, downstream of the Deh Cho Bridge, and upstream of a line drawn across the river, near kilometre 140 from a position on the north shore at 61°19.174'N, 118°33.083'W, to a position on the south shore, near Axe Point, at 61°18.352'N, 118°32.197'W | Beginning on June 1 and ending on September 30 |
| The waters of Great Slave Lake in the vicinity of Taltheilei Narrows, east of a line drawn from the southwest extremity of Sachowia Point (62°22.559'N, 111°43.931'W) to Utsingi Point (62°21.115'N, 111°40.773'W) and west of Longitude 111°21.75'W | Beginning on June 1 and ending on September 30 |

| | |
|---|--|
| That portion of the North Arm of Great Slave Lake northwest of a line drawn from Whitebeach Point (62°28.159'N, 115°15.138'W) to a position on the opposite shore at 62°30.583'N, 115°10.25'W | Beginning on June 1 and ending on October 31 |
| The waters of Great Slave Lake south of the Yellowknife River Bridge and north of a line beginning at a point at 62°17.328'N, 114°12.242'W on the mainland at the mouth of Wool Bay, thence to the southernmost point of Ruth Island (62°17.372'N, 114°14.219'W), thence to a point at 62°15.967'N, 114°28.117'W in the West Mirage islands, thence northwest to a point on the mainland at 62°21'N, 114°35'W | Beginning on June 1 and ending October 31 |

NUNAVUT

| Column 1 Waters | Column 2 Period |
|--|---|
| The waters of Northeast Bay, Dubawnt Lake east of a line from the south end of an unnamed point at 63°22.485'N, 101°6.517'W to the north end of an unnamed point at 63°20.054'N, 101°1.178'W | Beginning on July 1 and ending on August 31 |

SHELTERED WATERS VOYAGES MADE BY A FERRY

QUEBEC

| Column 1 Points | Column 2 Period |
|---|--|
| The wharf at Saint-Joseph-de-la-Rive (47°26.926'N, 70°21.91'W) and the wharf at Île-aux-Coudres (47°25.26'N, 70°23.546'W) | Beginning on January 1 and ending on December 31 |
| The wharf of the municipality of L'Île-Verte (48°1.5'N, 69°20.983'W) and the public wharf at La Richardière (48°2.363'N, 69°24.368'W) | Beginning on January 1 and ending on December 31 |
| The wharf at Saint-Augustin (51°13.5'N, 58°39.1'W) and wharf at Pointe-à-la-Truite (51°10.9'N, 58°34.1'W) | Beginning on May 1 and ending on November 30 |

NOVA SCOTIA

| Column 1 Points | Column 2 Period |
|---|--|
| The Englishtown ferry route from the wharf at 46°17.4'N, 60°32.5'W and the wharf at 46°17.36'N, 60°32.348'W | Beginning on January 1 and ending on December 31 |
| The Little Narrows ferry route from the wharf at 45°59.53'N, | Beginning on January 1 and |

| | |
|--|--|
| 60°59.017'W and the wharf at 45°59.572'N, 60°59.163'W | ending on December 31 |
| The Country Harbour ferry route from the wharf at 45°10.15'N, 61°42.178'W and the wharf at 45°10.476'N, 61°41.83'W | Beginning on January 1 and ending on December 31 |
| The LaHave River ferry route from the wharf at 44°17.754'N, 64°21.69'W and the wharf at 44°18.17'N, 64°21.56'W | Beginning on January 1 and ending on December 31 |