



Transport
Canada

Transports
Canada

TP 6980E
(06/2010)

Issue 2/2010

Feedback

Canadian Aviation Service Difficulty Reports



TC-1003961



Canada

TABLE OF CONTENTS

Hangar Noise	3
Fixed Wing	3
Rotorcraft	10
Engines.....	11
Heads Up (Feature Article).....	12
Equipment Airworthiness Directives (ADs)	13
FAA Unapproved Parts Notifications (UPNs)	14
AME Symposium	14
Suspected Unapproved Parts (SUPs).....	15
FAA Special Airworthiness Information Bulletins (SAIBs)	15
Service Difficulty Reports	18
Civil Aviation Internet Sites:.....	42

Feedback is published quarterly by the Continuing Airworthiness Division of Transport Canada, informing the aviation community of reported day-to-day problems that affect aircraft airworthiness in Canada.

Reprints of original *Feedback* material are encouraged, but credit must be given to Transport Canada's *Feedback* magazine. Please forward one copy of the reprinted article to the Editor.

To obtain information concerning copyright ownership and restrictions on reproduction of the material, please address your correspondence to:

Jérémie Laviolette, Editor

Feedback

Transport Canada (AARDG)

Place de Ville, Tower C

Ottawa ON K1A 0N8

E-mail: jeremie.laviolette@tc.gc.ca

Tel.: 613-952-4360

Fax: 613-996-9178

Internet: www.tc.gc.ca/carwis-swimn

The articles contained in *Feedback* are derived from *Service Difficulty Reports* (SDRs) submitted by Aircraft Maintenance Engineers (AMEs), owners, operators and other sources in accordance with *Canadian Aviation Regulation* (CAR) 521.

SDRs are normally published verbatim. Transport Canada assumes no responsibility for the accuracy or content of any of these reports. Only spelling errors are corrected and content may be reduced as well as personal references are deleted.

All defects or occurrences should be reported to Transport Canada through the Service Difficulty Reporting Program. For additional information about this program or concerning an article in *Feedback* magazine, contact your nearest Transport Canada Centre.

Feedback est aussi disponible en français.

© Her Majesty the Queen in Right of Canada, as represented by the Minister of Transport (2010).

TP 6980E

(02/2010)

TC-1003961

Printed on Forest Stewardship Council compliant paper. To learn more, visit www.fscCanada.org

HANGAR NOISE

CAR 521 and its predecessor CAR 591 Service Difficulty Reporting

Through Transport Canada's initiative to harmonize with the Federal Aviation Administration (FAA) and Joint Aviation Authorities (JAA), on 1 December 2009, Canadian Airworthiness Regulation (CAR) 521 came into force and superseded CAR standards 511, 513, 591 and 593.

In order to better inform and familiarize the aviation community, Transport Canada would like to bring attention to the introduction of CAR 521 and specifically highlight a difference from the former CAR 591.

Under the former CAR Standard 591, "Suspected Unapproved Parts" (SUP) were treated as an item within the SDR system. Now under CAR 521 this is no longer the case. SUP are now referenced in Standard 571.13 through an information note. The intent is that these

suspected unapproved parts will still be reported using the tools available through the WSDRS program however they have a specific code to identify that they are not service difficulties. This change is also reflected on the SDR Logic Chart.

The purpose of the SDR system is to collect, analyze, record and disseminate data concerning defects, failures and malfunctions which have resulted in, or may potentially, result in a safety hazard to an aircraft or its occupants.

The SDR is still a mandatory report requirement and the purpose of the Web Service Difficulty Reporting System (WSDRS) procedure has not changed. Keeping the core function of the SDR process the same for all users.

FIXED WING

SWEARINGEN, SA226TC

SDR # 20090918004

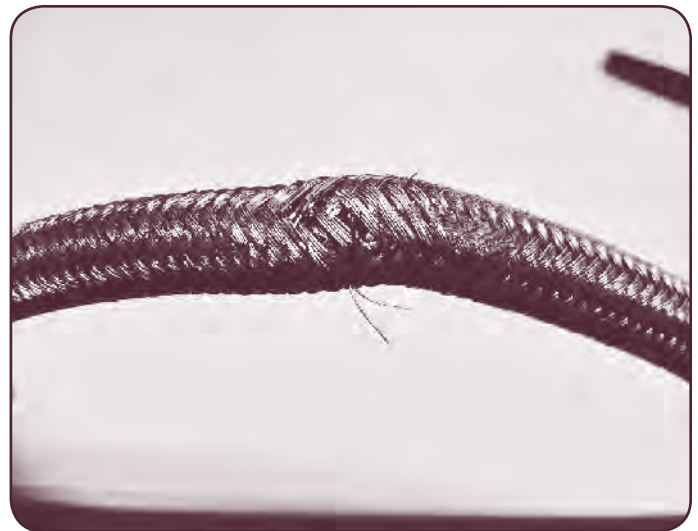
Ruptured Hose Causes Flapless Landing SDR submitted:

Upon climb-out the aircraft's hydraulic warning lights illuminated and hydraulic pressure was lost. The aircraft returned to the airport and performed a flapless landing with the emergency gear handle activated.

Maintenance discovered the hydraulic flexible hose from the hydraulic power pack to the accumulator in the L/H wheel well ruptured at a bend radius. The design of the aircraft required this hydraulic hose to have a significant bend in the hose so it could be routed correctly.

Minor chaffing of the steel braiding on the hose was found but was not significant enough to cause the rupture in the hose.

The hose was replaced and the aircraft returned to service.



Bleed Air Control Valve - Improper Assembly

SDR submitted:

Maintenance replaced the bleed air valve solenoid after it was being reported as defective. Valve Part Number (P/N) 320250-4-1 is located in the R/H wheel well of the aircraft and by design is in fairly close proximity to the landing gear tires when the gear is retracted.

After replacement of the valve, the AME did not notice the electrical connection for the valve was oriented differently than the valve previously removed. The wire harness and connector could be connected in this different configuration.

Normally with the valve installed, looking forward the connector is at the 2 o'clock position. This replacement valve has the connector located at approximately the 6 o'clock position. The aircraft was dispatched and after takeoff, the crew retracted the gear and noticed the R/H main landing gear (MLG) remained in transit rather than locking in the up position. The gear was recycled with no success. The crew elected to return to the airport and landed without any further problems.

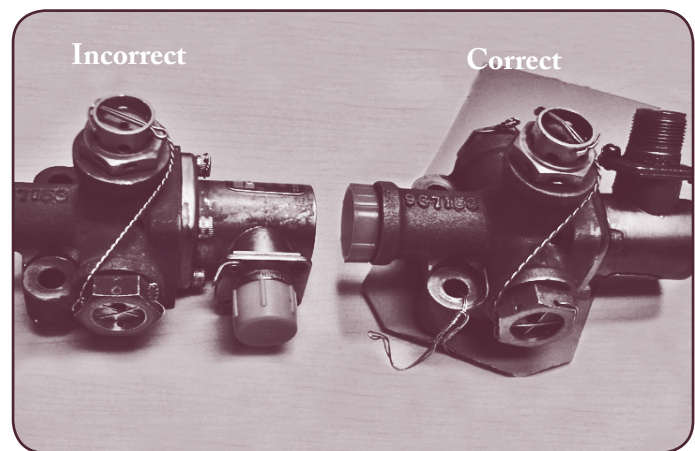
Maintenance immediately noticed that the No. 3 tire had rub markings on it from contacting the bleed air valve solenoid's connector during retraction attempts. This damaged the valve bracket and the cannon connector; the valve itself was not damaged.

AMEs realigned the cannon plug connector and reinstalled the valve with a new bracket. They then, performed a gear swing and released the aircraft.

The company has inspected the remaining valves in their fleet stock for any discrepancies that may cause this same occurrence.

Transport Canada Comments:

Ensure correct orientation of parts before installation. ✖



Wing Rib Cracks (WS 121.966)

SDR submitted:

During inspection, the technician found cracked wing ribs at both the R/H and L/H wing rib leading edges located at Wing Station (WS) 121.966. The affected ribs were L/H wing ribs part numbers (P/N) 50-980002-825 & 000-11-133-21, and R/H wing ribs P/Ns 50-98002-826 & 000-110133-22.

The submitter stated that the cracks appeared to be caused from fatigue, as there was no evidence of a manufacturing tooling mark or other induced causes.

It is of interest to note that three additional aircraft in the operator's fleet also reported cracking of wing ribs. These cracks were all located at WS 121.966, which is immediately outboard of the engine nacelle.

Transport Canada Comments:

Engineering specialists opined that these wing rib cracks located at WS 121.966 were likely the result of vibrations coming from the propellers and engine mounts. A secondary factor may have been that landing loads were transferred to the subject wing ribs. In this case, the 3 aircrafts operate from gravel strips and have "approved STC" for larger tires and brakes installed.

The Type Certificate Holder has been notified regarding this defect. ✖

Smoke in the Cockpit

SDR submitted:

On approach the crew had just selected full flap on the final landing checks when they noticed smoke in the cockpit. Since they were less than 5 km final, they elected not to put on their oxygen masks. The crew dumped cabin pressure, turned the bleed air off and turned the fresh air fan to override. Smoke continued to accumulate in the cockpit. The crew turned both generators off and continued on approach.

After landing the crew informed Air Traffic Control that they had smoke in the cockpit, they immediately stopped the A/C and evacuated.

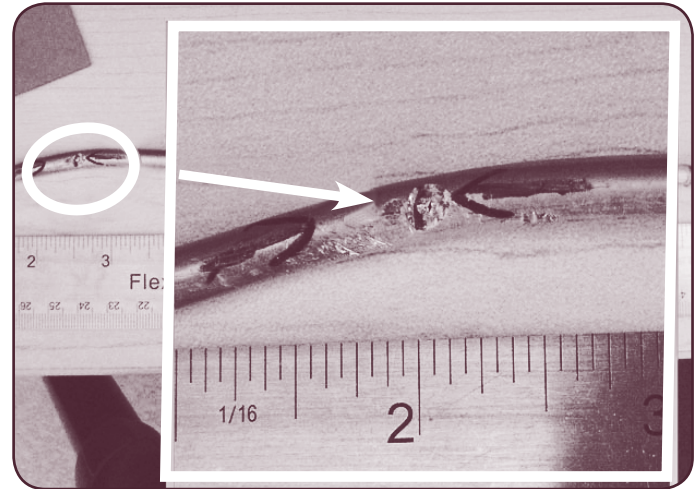
Maintenance found that a flap down hydraulic line had ruptured at the L/H wing center section in the vicinity of the bleed air-mixing valve. The hydraulic fluid found its way into the air conditioning system and created the mist vapor event in the cockpit and cabin. There was no fire.

The company replaced the line and cleaned the air conditioning system and released the aircraft. The company will be doing a fleet wide inspection to check for damaged hydraulic lines in these areas and ensure

correct installation of the gaskets on the air conditioning valves.

Transport Canada Comments:

Although sometimes fretting is unavoidable, the need to inspect rigid lines and wires for chaffing cannot be stressed enough. ✖



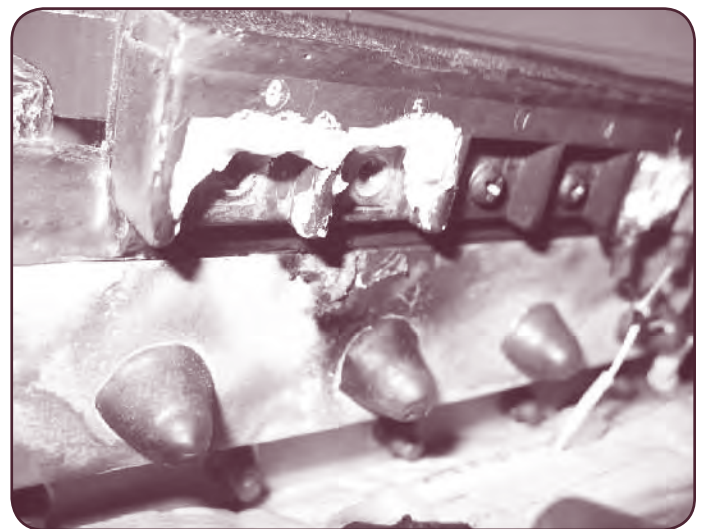
Windshield Terminal Arcing

SDR submitted:

While conducting the 1200 hour inspection of the R/H windshield, the "Anti Static Coating" on the G200 was found unserviceable and did not meet the specifications required in the manufacturer's maintenance manual. The windshield required replacement and upon removal found that, one of the power cables arced to the aircraft's structure due to poor insulation on the terminal end. The windshield and terminal end of the power cable were replaced.

Transport Canada Comments:

The operator ensured that the adequate clearance between the terminals and aircraft structure was obtained. ✖



Main Landing Gear (MLG) – L/H Door Roller Seized

SDR submitted:

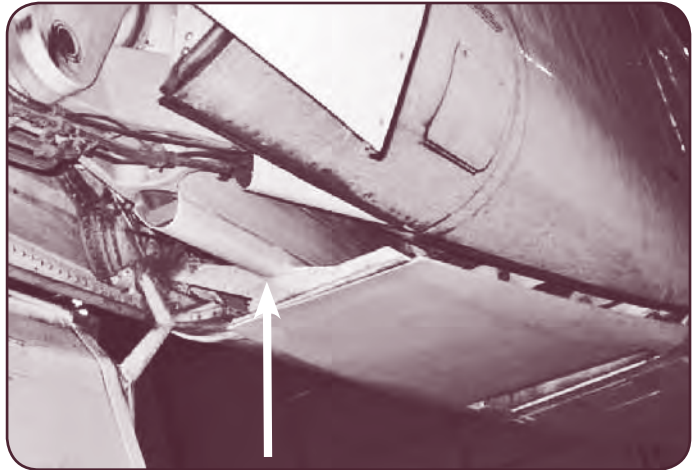
The aircraft landed with a L/H MLG indication snag. Maintenance crew put the aircraft on jacks and commenced troubleshooting. The first functional gear check was fine, however on the second selection, the L/H gear door did not open and the gear was “hanging up” on the door. The gear was then successfully selected back to the “up” position. However, when the Alternate (Emergency) Gear “down” selection was made, the gear still hung-up on the door, preventing full extension.

Whenever the maintenance crew disconnected the door linkage, the landing gear extended as per normal. Further investigation revealed that the door roller for the L/H door was seized. This prevented normal door operation and subsequently prevented full gear extension.

The SDR submitter stated that the forward door actuator and door roller is visually inspected at “A” check interval. The operator could not find any specific instructions for lubrication of the actual door roller.

Transport Canada Comments:

Bombardier have completed their investigation and determined that rigging related issues and damaged door linkages were the primary cause of this problem. ✖



Flap Shaft Cable - Severed

SDR submitted:

During routine ground flap functional checks, the L/H outboard flap did not move, however the flap asymmetry switch activated as per design to prevent a split-flap condition.

Upon further investigation, maintenance crew discovered that the L/H outboard flap cable was broken at the flap actuator end.

The SDR submitter stated that corrosion was evident at the area of the cable breakage. It appears that if the flap outer cable sheath, is damaged or cracked, then pressurization air can force the lubricating grease out, thereby allowing moisture to enter the housing. This can result in binding and corrosion.

Transport Canada Comments:

A service history review revealed several previous flap cable failures where cable corrosion was evident in the flap drive sheathing and flap cable.

The FAA issued AD 2001-18-07 (SB 27-3397) to inspect for any incorrectly configured flap flexible shaft assemblies that could result in an asymmetrical flap condition. Transport Canada recommends that owners/operators pay frequent and particular attention to the condition of the flap cables. ✖



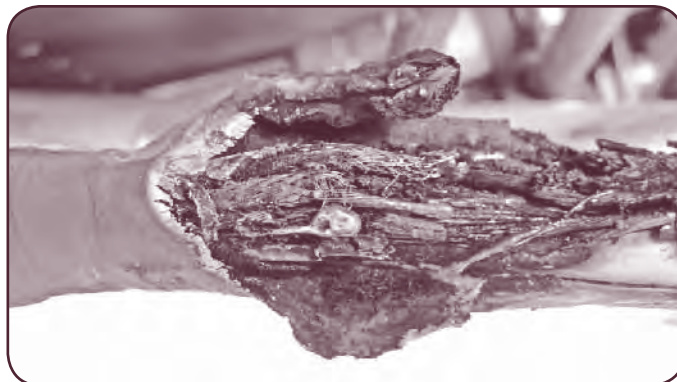
Ignition Wiring Burns

SDR submitted:

During an engine start on the ground, it was noted that several circuit breakers popped at 10% engine speed when the auto ignition cut-in. After an in-depth inspection, wiring at the L/H wing lower fairing area was found burnt at multiple locations. The wiring was repaired and the aircraft returned to service.

Transport Canada Comments:

The operator is conducting a fleet inspection to determine if there are similar defects. ✖



Brake Line Quick Disconnect Fitting

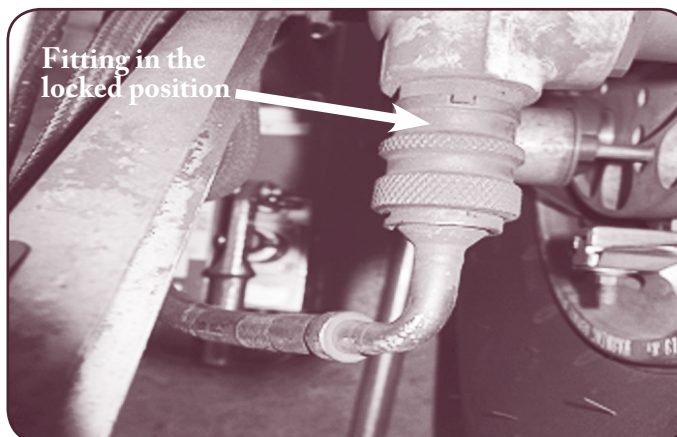
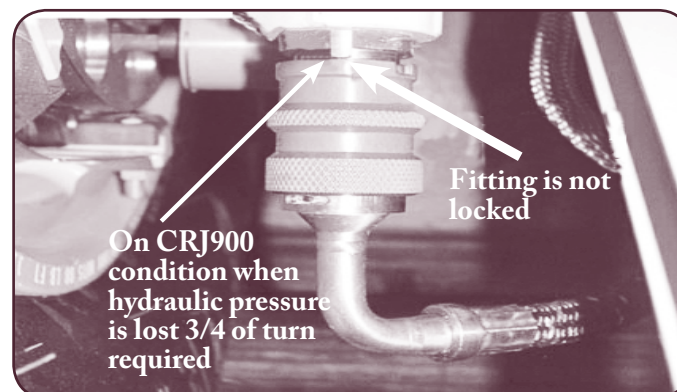
SDR submitted:

After landing, the flight crew reported that the aircraft required a lot of power to taxi and the L/H side brakes seemed to be dragging. Once clear of the runway, they stopped on the taxiway and the tower confirmed that their No.1 Main Wheel was flat. Maintenance Personnel found the No.1 Main Wheel had a large flat spot and hole in it indicative of landing with a locked brake. The No.1 brake quick disconnect fitting was loose; it came off with only ½ turn. The loose fitting allowed hydraulic pressure to be trapped in the brake causing it to remain locked on landing. The quick disconnect fitting, product number H155006-191-001 (IPC 32-11-35, FIG. 1-180) was tightened and locked, both main wheels were replaced and the aircraft returned to service.

The AME that completed this work mentioned that he has seen this issue before more than once, where the quick disconnect fitting is loose or in one case completely off (which caused the brake not to work at all). It appears that this fitting is susceptible to backing off if it is not correctly locked.

Transport Canada Comments:

The OEM is currently investigating this issue. In the interim, Transport Canada strongly recommends maintenance personnel to pay extra attention during maintenance activity around the wheels and brakes area. ✖



Cable Tension Compensator (Aileron/Rudder Interconnect)

SDR submitted:

During a routine inspection, the AME found the compensator assembly completely “jammed”.

The operator then conducted similar inspections on all 8 remaining aircraft in their respective fleet. Several of the cable tension compensator assemblies were found seized and distorted (bent).

Transport Canada Comments:

On each aircraft both the cable compensator assemblies are installed on the fuselage roof between FS434.84 &

FS481.50 Fuselage Stations. The interconnect between the rudder and aileron system is linked through a cam/pulley, bellcrank and summing lever. The purpose of this assembly is to assist the pilot in making coordinated turns during flight operations.

It is recommended that owners/operators closely inspect this assembly at the next opportunity. ✖



L/H Engine Fire Loop Failure

SDR submitted:

On climb out at approximately 18 000 feet, the pilots reported that the L/H engine fire detection system indicated failed. The pilots reported that the checklist had been completed and as a precautionary measure proceeded to shut down the engine in flight.

The aircraft was re-routed and declared an emergency. The tower reported that no flame or smoke could be seen from the L/H engine.

After an uneventful landing, maintenance was called to investigate and found the Fire Loop in Zone 2 had failed.

Gulfstream and Pratt & Whitney were informed of the failure.

Further investigations revealed that the cause of the failure was a missed and unused clamp at the end of the loop.

The Zone 2 Fire Loop was replaced, utilizing this last clamp a ¼ inch from the end of the loop, limiting frequency vibration.

The aircraft was ground run and a functional check was carried out on the Fire Loop and all systems operated serviceable.



Nose Landing Gear (NLG) Tubular Pivot Assembly

SDR submitted:

Several recent SDRs have described a misalignment problem regarding the NLG gudgeon (D60-3233-82-31) within the tubular pivot shaft (D60-3233-82-32). The SDR submitter stated that the misalignment only occurs on the L/H gudgeon and always opens toward the aft direction; when the nose gear is down and locked. Another SDR reported the NLG failed due to shearing of the L/H gudgeon within the tubular shaft. As a result, the L/H wall of the wheel well was damaged directly due to NLG component mislocation.

The NLG spring assembly and the NLG actuator driving the down lock mechanism can create excessive forces that the tubular pivot assembly cannot tolerate. Repeated forces on the gudgeon may result in a “belling” deformation on the tubular pivot shaft.

Transport Canada Comments:

Diamond Aircraft (Austria) has taken corrective action and recently issued Mandatory Service Bulletin (MSB) 42-070/1. The subject MSB provides instructions to check for excessive wear and gap between the Tubular Pivot and L/H Gudgeon. If the gap exceeds specified limits, the tubular pivot tube assembly will require replacement.

Transport Canada (TC) strongly recommends that owners/operators comply with the aforementioned MSB. Failure to do so could possibly result in the collapse of the NLG. ✖

Passenger Door Shoot Bolt Unsafe

SDR submitted:

After a flight, the crew attempted and was unable to open the passenger door.

The crew noted that the upper forward shoot pin indicator remained "green" with the handle in the open position. The door panel was removed for inspection and maintenance noted that the retaining bolt for the upper forward shoot pin had migrated out of position.

The nut for the retaining bolt was found dislodged and had fallen within the door.

The bolt and nut were reinstalled into the shoot pin linkage, the nut was torqued in safety and the aircraft was returned to service.

Transport Canada Comments:

The operator noted that no maintenance had been performed in this area since the manufacture of the aircraft and suspected that the nut was never torqued in safety during its initial installation. ✖



ROTORCRAFT

AEROSPATIALE, AS 350B2

SDR # 20080722005

Main Rotor Head Ring Cracked

SDR submitted:

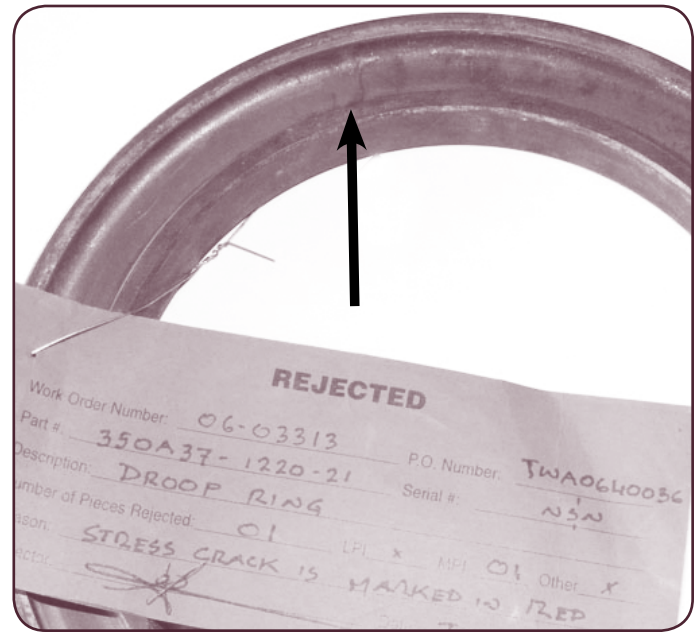
On a routine mast reconditioning and inspection, which have a 6-year inspection requirement, the ring was sent for non-destructive testing (NDT) along with the rest of the parts from the assembly (no NDT requirement for the ring at any point, or for any part of the assembly at the 6 year inspection). There was a stress crack during the Magnetic Particle Inspection (MPI) check, which was cause for rejection of the part.

The ring is located at the top of the main rotor shaft, where the rotor head attaches, and rotates with the main rotor shaft/head.

The customer was notified of the defect, and the part was replaced.

Transport Canada Comments:

A heads up to operators that this inspection should be implemented in their maintenance program. ✖



BELL TEXTRON - CANADA, 206B

SDR # 20081125005

Vertical Fin Washers Cracked

SDR submitted:

The vertical fin was removed to facilitate seal replacement of the pitch change mechanism. The radius washers that are used on the vertical fin attachment were inspected, and it was noted that 3 of the 4 washers had cracks on the outside perimeter of the washer. The washers, part number 140-019-1, were replaced and the fin re-installed.

Transport Canada Comments:

It is not known if this condition is due to over tightening of the fastener, or the increase in torque value following issuance of Alert Service Bulletin 206-06-107. ✖



Pitch Change Horn Cracked

SDR submitted:

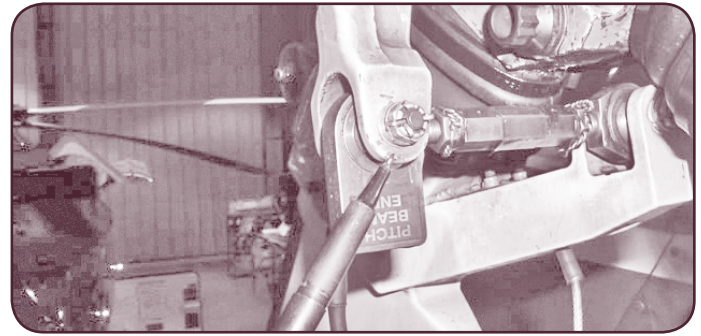
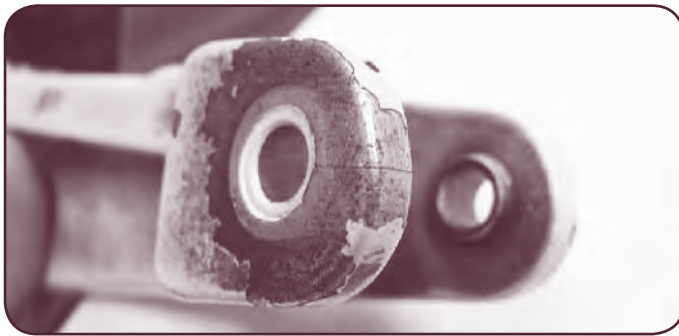
A routine inspection revealed an apparent crack in the tail rotor pitch change beam. After removal of the protective paint coating, the existence of a crack was confirmed both visually and by the Liquid-Phase Infiltration (LPI) method.

The crack extended from the outside diameter of the bushing outward to the outer edge of the horn.

Due to the critical location of the discovered crack, the pitch change beam was replaced and the aircraft was returned to service.

Transport Canada Comments:

The operator added that they will implement a one-time inspection and have increased the inspection guidelines for repetitive inspection. ✖



ENGINES

CF34-3B Missing Nut Engine bleed air port

SDR submitted:

Pilots reported L/H engine jet pipe overheat warning was activated during cruise for approximately 20 seconds and then went away by itself. Aircraft was returned to base. Maintenance investigated and found a plug/plate at approximately 11 o'clock with 1 nut loose and the other missing. The nut was found in the bottom of the cowl and the other nut was loose about 4 turns.

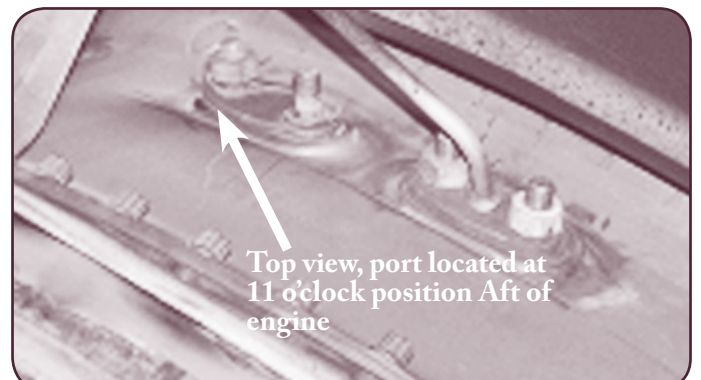
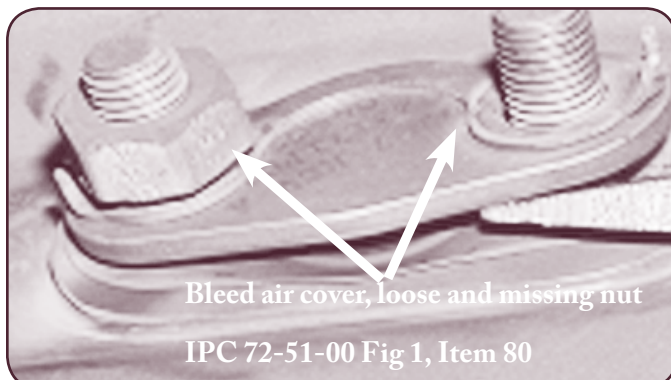
Note: This plug is located at the same engine station as the Inlet Turbine Temperature (ITT) Probes.

It is unclear whether hot gases were escaping from the loose plate and caused the jet pipe overheat warning or if the nut falling down and contacting the terminal lugs of the sense elements set off the warning.

No reoccurrence of this fault has occurred since the reinstallation of the plug/plate.

Transport Canada Comments:

Good area to inspect at the next opportunity of engine maintenance activity. ✖



HEADS UP (FEATURE ARTICLE)

BOEING 737-100, -200, -200C, -300, -400 AND -500 SERIES

SDR # 20100104005

Aircraft controllability and excessive trim

A recent SDR was issued where: “shortly after takeoff, the flight crew reported that abnormal control inputs and trim were required during climb-out and landing with flaps extended”.

Initial maintenance inspections of both the flap and aileron systems revealed nothing out of the ordinary even though a complete operational and visual inspection was performed. A flight test was conducted and it was observed that the left out-board mid flap panel was not correctly aligned in relation to its adjoining flap panel and wing.

Further maintenance investigations revealed that on the left wing out-board mid-flap, the in-board carriage spindle (number 2) had sheared.

Another similar event had previously occurred where the aircraft was reported to roll to the right with flaps beyond 10 degrees and 15 units of trim was required to hold level flight.

Once again the initial inspection revealed no obvious fault but a further investigation found the right wing out-board mid-flap in-board carriage spindle (number 7) had sheared.

Back in July 2002, Boeing issued Alert Service Bulletin 737-57A1277 to address this issue due to a high number of spindle reported failures from several operators. Later that year in October, the Federal Aviation Authorities (FAA) issued AD 2002-22-05, which mandated a repetitive inspection interval task of all flap carriage spindles including a corrective action procedure.

The following year FAA AD 2003-24-08 was issued, superseding the previous one, due to an operator that experienced a right wing mid flap dual carriage spindle failure (number 7 and 8) during approach. This event was defined as follows: “at approximately 500 feet above ground, the flight crew heard a loud bang followed by the aircraft rolling off hard to the right where significant aileron and rudder inputs were required to maintain level flight to complete the landing”.

This new AD reduced the inspection interval and revised the overhaul procedure.

For these events above and in all other cases that have been reported, the aircrafts controllability was affected,

abnormal control inputs and trim were required by the flight crew to maintain normal level flight.

As stated by an operator who experienced this scenario “the flap is very heavy and difficult to move, when trying to trouble-shoot for this type of failure”, emphasizes the importance to recognize this type of fault and to be aware of the Boeing 737 Maintenance Manual procedure 05-51-191 when trouble-shooting this type of snag.

Due to the continuation of flap carriage failure incidents, Transport Canada Civil Aviation (TCCA) along with the FAA are presently reviewing all SDRs issued since the release of AD 2003-24-08.



EQUIPMENT AIRWORTHINESS DIRECTIVES (ADs)

Transport Canada (TC) endeavours to send copies of new airworthiness directives (ADs), which are applicable in Canada to the registered owners of the affected products. Equipment/appliance ADs are often only distributed to our regional offices because the owners of aircraft affected by this type of AD are not generally known.

AMEs and operators of the affected products are encouraged to obtain further information or a copy of the ADs from their regional TC office, their local TCC, their PMI, or from the Civil Aviation AD website at: www.tc.gc.ca/cawis-swimn

MANUFACTURER	AD NUMBER	ORIGIN	DESCRIPTION
ROCKWELL COLLINS	2010-0067	EU	ATA 34 - Navigation - Mode S Transponder - Check / Modification
KELLY AEROSPACE	7/8/2010	US	Rebuilt turbochargers
FIRE FIGHTING	2010-0062	EU	ATA 26 - Fire Protection – Halon 1211 Fire Extinguishers – Identification / Replacement
HONEYWELL	7/2/2010	US	To ensure that the flightcrew has an accurate glideslope deviation indication
FIRE FIGHTING	2009-0262R1	EU	Fire Protection - Halon 1211 Fire Extinguishers - Identification / Replacement
RMH DEVELOPMENT	2/7/2010	US	Main Rotor Blade failure. - Inspection
LIFESAVING SYSTEMS	3/2/2010	US	Replacement of Lifesaving Systems Corp. D-Lok Hook assembly
FALLSCHIRMBAUBUCHSEN	2010-0009-E	EU	ATA 25 - Equipment / Furnishings - Emergency Parachute - Inspection / Rework
ENGINE COMPONENT INC	2009-26-12	US	Cracks at the head-to-barrel interface in the cylinder assemblies
SICLI	2009-0278	EU	ATA 26 - Fire Protection – Portable Halon 1211 Fire Extinguishers – Identification / Replacement
ALLIED SIGNAL	CF-2009-44	CF	Emergency Locator Transmitter – Potential Failure To Transmit The Required 406MHz Coded Signal
HONEYWELL	CF-2009-44	CF	Emergency Locator Transmitter – Potential Failure To Transmit The Required 406MHz Coded Signal
B/E AEROSPACE	2009-21-10	US	Rupture of a high-pressure gaseous oxygen cylinder, which had insufficient strength characteristics due to improper heat treatment - Replacement
HAMILTON SUNDSTRAND	2009-21-03	US	Over-fueling of the APU during the start sequence
GOODRICH	2009-20-11	US	ATA 28 - potential of ignition sources inside fuel tanks.
ROCKWELL COLLINS	2009-0173	EU	ATA 34 - Navigation – Mode S Transponder – Modification / Replacement.
HARTZELL	10/14/2009	US	Separation of the propeller blade counterweight slug
FREEFLIGHT SYSTEMS	5/8/2009	US	Erroneous information provided by 2101 I/O Approach Plus GPS navigation system.
TRIMBLE	5/8/2009	US	Erroneous information provided by 2101 I/O Approach Plus GPS navigation system.
AVIDYNE	5/5/2009	US	Primary Flight Display (PFD) altitude and airspeed information
BENDIX	2/3/2009	US	Fuel injection servo, having a servo plug gasket, part number (P/N) 365533.
PRECISION AIRMOTIVE	2/3/2009	US	Fuel injection servo, having a servo plug gasket, part number (P/N) 365533.

FAA UNAPPROVED PARTS NOTIFICATIONS (UPNs)

Unapproved Parts Notifications are published by: FAA, AIR-140, P.O. Box 26460, Oklahoma City, OK 73125. For a full list please visit: <http://www.faa.gov/avr/sups/upn.cfm>

UNAPPROVED PARTS NOTIFICATIONS		
NUMBER	SUBJECT	DATE POSTED
2010-20090528001	MacLean - ESNA, Pocahontas, Arkansas - Non-conforming Locking Nuts	03/23/2010
2010-20090623001	Electrocube, Pomona, CA - Sold Transformer Power, Fixed Autotransformer without Parts Manufacturer Approval	02/17/2010
2010-20090909001	Non-conforming Thrust Reverser Actuator Clevis Pins for General Electric CF6-80C2 and CF6-80E1 Engines	01/12/2010
2010-20080616008	Isolair, Troutdale, OR - Selling UH-1H parts without approval	01/11/2010
2009-20090817004	Hoover Precision Products, Inc. - Bearing assemblies with improperly heat treated ball bearings	12/10/2009
2009-20090512001	Weatherly Aircraft Nevada, Bogalusa, LA - Selling aircraft parts without FAA approval	09/18/2009
2009-20080703001	Watson's Profiling Corporation - Manufacturing Aircraft Parts without FAA Approval	09/9/2009
2007-00016	Elliptical Systems Incorporated Current Limiters, Overhead Reading Light Switches and Avia-Dynamics Corp. Coffee Brew Trays - Sold without Parts Manufacturer Approval	08/27/2009
2009-20080716034	Plymouth Tube Company-Failed to conduct all required testing as stated on Certificate of Compliance for stainless/nickel alloy tube material supplied to Aerospace Industry	08/27/2009
2009-200600012	Chatsworth Rubber - Nonconforming MS and NAS O-Rings	08/17/2009
2009-200700141	Acme Components Company SMLJ15CD TR-T Diodes - Produced without Parts Manufacturer Approval	08/17/2009

AME SYMPOSIUM

Ontario

Ontario
October 27-29, 2010
Delta Meadowvale Conference Centre
6750 Mississauga Rd
Toronto, ON L5N 2L3



Tel: 905-405-1870
Fax: 905-405-1855
Email: cara@precisionaerocomponents.com

SUSPECTED UNAPPROVED PARTS (SUPs)

The submitters of the following Service Difficulty Reports (SDRs), indicated that an unapproved part was suspected. The list is provided here for information only and should not be constructed as an identification of confirmed unapproved parts.

In Canada, SUPs should be reported in accordance with Canadian Aviation Regulation (CAR) 521, indicating your suspicion of an unapproved part on a regular SDR form or on the Internet at www.tc.gc.ca/wsdrs

MAKE/MODEL	JASC	PART NAME	PART No	PART CONDITION	SDR No.	RGN
<i>BOEING</i>						
737 275	2000	HYD ACCUMULATOR	2660472M2	NEW	20091002004	PNR
<i>CESSNA</i>						
172N	2000	WING FAIRINGS	A221ANDA222	NEW	20090730002	ONT
<i>DEHAVILLAND - CAN</i>						
C6US100015	2000	AXLE ASSY	C6US100015	NEW	20090701001	PNR
DHC2C2UT473	2000	TORQUE TUBE	C2UT473	CORRODED	20090817003	PAC
<i>DIAMOND - CAN</i>						
202720130	2000	RUDDER CABLES	2027201300	NEW	20091127006	PAC
<i>GRIMES MFG CO</i>						
209075325	2000	FILTER PR	25026011	NEW	20090430005	PAC
<i>HONEYWELL</i>						
JG7039C1	2000	CLAMP	O316S	INCORRECT ASSY	20091125006	PNR
<i>MCCAULEY</i>						
C5013WPL	2000	SPRINGS		INCORRECT PART	20090730006	PAC
<i>PRATT & WHITNEY - CAN</i>						
90478401A	2000	EXCITER		LOOSE	20091007005	PNR
<i>TELEDYNE BENDIX</i>						
101630509	2000	HOUSING		BROKEN	20091119006	PAC

FAA SPECIAL AIRWORTHINESS INFORMATION BULLETINS (SAIBs)

A Special Airworthiness Information Bulletin (SAIB) is an information tool that alerts, educates, and makes recommendations to the general aviation community. It is non-regulatory information and guidance that does not meet the criteria for an Airworthiness Directive (AD). <http://www.faa.gov/aircraft/safety/alerts/SAIB/>

SAIB NUMBER	MAKE / COMPANY	SUBJECT	ISSUE DATE
NE-10-27	Superior Air Parts, Inc.	Reciprocating Engine Oil System	04/20/2010
CE-10-26	Schempp-Hirth Flugzeugbau	Engine – Starter Ring Gears	04/14/2010
CE-10-25	TKS	Flammable Fluid Considerations for TKS Fluid	04/5/2010
NM-10-23	All-cargo	Equipment/Furnishings: Exterior Exit Markings	03/31/2010
NM-10-24	Boeing Company, The	Hydraulic Motors: Hydraulic Motor Generator (HMG) Inadvertent Lock-out	03/31/2010
CE-10-22	Honeywell	Navigation	03/26/2010
CE-10-19R1	General Aviation	Engine Exhaust and Carbon Monoxide Detectors	03/17/2010
CE-10-21	Propellers	Propellers/Propulsers; Propeller Overspeed in Piston Engine Aircraft	03/17/2010
CE-10-20	Cessna Aircraft Company	Wing Structure; Wingtip Extensions	03/16/2010

SAIB NUMBER	MAKE / COMPANY	SUBJECT	ISSUE DATE
NM-10-18	ATR – GIE Avions de Transport Régional	Instruments: Redesigned Aileron Sensors for Flight Data Recorder	03/4/2010
CE-10-17	Piper Aircraft, Inc.	Landing Gear - Piper PA-28 and PA-32 Main Landing Gear Torque Link Inspection Interval	02/23/2010
CE-10-16	Liberty Aerospace Incorporated	Passenger/Crew Doors: Liberty Aerospace Inc. XL-2	02/9/2010
SW-10-15	Bell Helicopter Textron (Canada)	Bell Helicopter Textron, Inc. (Bell) Model 429 Helicopters with Clam Shell Doors	02/5/2010
CE-10-14	Honeywell/Bendix King	Navigation	01/22/2010
SW-08-03R2	Rotorcraft	Recommendations for Rotorcraft During Icing Conditions	01/15/2010
CE-10-11R1	General Aviation	Electrical: Fire Hazard in Resetting Circuit Breakers (C/Bs)	01/14/2010
NM-10-12	Agusta S.p.A Cessna Aircraft Company Gulfstream Aerospace Corporation Hawker Beechcraft Corporation Honeywell.	Navigation: Flight Management System	01/7/2010
NM-10-13	ATR – GIE Avions de Transport Régional Boeing Company, The Bombardier Inc Cessna Aircraft Company Dassault Aviation Embraer - Empresa Brasileira de Aeronautica S.A Gulfstream Aerospace Corporation Hawker Beechcraft Corporation Lockheed Martin Corporation Honeywell	Navigation: Flight Management System	01/7/2010
CE-10-10	Hawker Beechcraft Corporation	Controls: Flap Control System Rigging and Flap Actuator Overhaul	11/30/2009
NE-10-09	Rolls-Royce Motors, Ltd TeledyneContinental Motors	Reciprocating Engine Power Section: Hydraulic Valve Lifters	11/20/2009
CE-10-08	Zodiac	Wings: Zodiac CH601XL and CH650 Wing Structural Modifications	11/7/2009
NE-10-07	Teledyne Continental Motors	Reciprocating Engine Cylinder: Identification Information for Superior Air Parts, PMA Cylinder Heads for Teledyne Continental Motors (TCM) IO-520, TSIO-520, and IO-550 Series Engines.	11/2/2009
NE-09-51R1	Avia Propeller Ltd.	Propeller Blade Section	10/29/2009
CE-09-37R1	True Flight Holdings LLC	Stabilizer: True Flight (Grumman American) AA-5	10/23/2009
NM-10-06	Bombardier Inc.	Oxygen—Inspection of Third Crewmember Oxygen Hose	10/20/2009
CE-09-40R1	CPAC, Inc. Gulfstream Aerospace Corporation	Flight Controls - Trailing Edge Flap Control System	10/19/2009
NE-10-05	Reciprocating Aircraft Engines	Fuel Control/Reciprocating Engines – Float type Carburetors	10/16/2009
CE-10-04	General Aviation	Smoke Detection: Cockpit Smoke and Fumes	10/8/2009
CE-10-02	Glaser-Dirks Flugzeugbau GmbH	Flight Controls: Aileron Control Rod End	10/7/2009
CE-10-03	Glaser-Dirks Flugzeugbau GmbH	Flight Controls: Elevator Control Bearing Stand	10-07-2009
CE-10-01	Cessna Aircraft Company Fuel Tanks	Fuel: Fuel Tank Selector Valve Systems	10-05-2009

SAIB NUMBER	MAKE / COMPANY	SUBJECT	ISSUE DATE
CE-09-50	Cessna Aircraft Company	Alternative Method of Compliance for AD 2008-15-06	09/23/2009
NE-05-84R1	Bombardier-Rotax GmbH	Reciprocating Engine Liquid Cooling: Bombardier-Rotax 912 & 914 Series Engines	09/10/2009
SW-09-49	Eurocopter France	Eurocopter AS350BA Emergency Floats	09/1/2009
NE-09-25R1	Fuel	Fuel: Jet Fuel Containing FAME (Fatty Acid Methyl Ester)	08/19/2009
NE-09-48	Propellers	6110 Propeller Assembly	08/14/2009
CE-09-47	Flight Deck	Navigation: VOR or LOC/ILS Approaches with G1000, Perspective™, Prodigy™ Integrated Flight Decks Installed With a Garmin GFC 700 Autopilot	08/7/2009
CE-09-46	Cirrus Design Corporation	Landing Gear, Nose	07/31/2009
CE-09-45	Viking Air Limited	Leveling & Weighing: Viking Air Limited DHC-2 MKI Gross Weight Increase Modification (STC SA00299NY)	07/29/2009
SW-09-44	Schweizer Aircraft Corporation	Cabin door	07/28/2009
CE-09-42	Cessna Aircraft Company	Lights - Landing Light, Beacon Light and Taxi Light Switch Applications	07/24/2009
CE-09-43	DaimlerChrysler Aerospace AG	Alternative Method of Compliance for AD 87-09-01	07/24/2009
CE-09-41	Hawker Beechcraft Corporation	Aft Baggage/Maintenance Door Latches	07/22/2009
NE-06-31R3	Lycoming EnginesTextron LycomingAVCO Corporation	Engine Lubricating Oils	07/22/2009
NE-09-31R1	Textron Lycoming, AVCO Corporation, Turbochargers	Turbocharging: Rebuilt by Kelly Aerospace Energy Systems	07/9/2009
CE-09-38	Mooney Aircraft Corporation	Wings: Installation of Supplemental Type Certificate (STC) Wing Tip Fairings	07/7/2009
CE-09-39	Cessna Aircraft Company	Leveling and Weighing: Maximum landing gross weight limitation for Cessna U206F, U206G, TU206F, TU206G series airplanes equipped with Flint Aero STC SA4366WE	07/7/2009

SERVICE DIFFICULTY REPORTS

LEGEND

JASC: Joint Aircraft System Code number defining assembly/system/components

SDR No.: Transport Canada Civil Aviation (TCCA) -assigned SDR control number — please quote in any correspondence or inquiries

RGN: TCCA region of SDR submitter:

PAC = Pacific

ONT = Ontario

ATL = Atlantic

VAR = Various

PNR = Prairie and Northern

QUE = Quebec

NCR = Ottawa (HQ)

MAKE/ MODEL	JASC	PART NAME	PART No	PART CONDITION	SDR No.	RGN
AIRCRAFT						
<i>AERO COMMANDER</i>						
112TCA	3220	BOLT	AN415	SHEARED	20091117003	ONT
680F	5711	RIVETS	AN4265	CORRODED	20090819007	PNR
680FL(P)	2910	HYDRAULIC TUBE		RUPTURED	20091020006	PAC
681	2731	TRANSMITTER	EA1502C1	FAILED	20091023003	PNR
690	3220	LANDING GEAR		IN SERVICE	20090824003	PAC
690A	3200	PSI GAUGE	13551000509	OVERHAULED	20090623006	PNR
690A	5610	WINDOW		LOOSE	20090625003	PNR
695A	2100	PRESSURIZATION LINE	8505345	BENT	20090922004	PNR
<i>AEROSPATIALE</i>						
AS 350B1	2931	HYDRAULIC PRESSURE SWITCH	MA12401	INOPERATIVE	20091021015	PAC
AS 350B1	2932	PRESSURE SWITCH	MA12402	NEW	20090813010	PAC
AS 350B2	0	PILOT SEAT BELT ASSY	504305401	SERVICEABLE	20090915009	PAC
AS 350B2	2431	BATTERY	16061	OVERHEATED	20090810002	PAC
AS 350B2	2435	SHAFT	150SG11032	SHEARED	20090820002	QUE
AS 350B2	2900	HYDRAULIC HOSE ASSY	704A34412037	BURST	20090813015	PAC
AS 350B2	2900	SWITCH	MS2771923	UNSERVICEABLE	20091201002	ONT
AS 350B2	2915	SWITCH	MA12401	INOPERATIVE	20090723011	PAC
AS 350B2	2932	HYDR PRESSURE SWITCH	MA12401	INOPERATIVE	20090730010	PAC
AS 350B2	3340	SWITCH	045004B110A	UNSERVICEABLE	20090806002	ONT
AS 350B2	5301	MANUAL RELEASE CABLE	AS221826802	INCORRECT PART	20090423005	PAC
AS 350B2	5347	LEAF	350A2113832403	CRACKED	20090526006	PNR
AS 350B2	5450	ANGLE BRACKET	350A21126220	CRACKED	20090825004	PNR
AS 350B2	5610	L/H WINDOW SLIDER	704A41512003	VIBRATING	20091215002	PAC
AS 350B2	6420	T/R PITCH LINK	350A33214501	CRACKED	20090703002	PAC
AS 350B2	6500	FLEX COUPLING	350A35105901	CRACKED	20090716009	PAC
AS 350B2	6730	ACCUMULATOR	704A34240015	FAILED	20090820003	QUE
AS 350B2	6730	ACCUMULATOR	704A34240015	FAILED	20090820004	QUE
AS 350B2	6730	ACCUMULATOR	704A34240015	FAILED	20090820005	QUE
AS 350B2	7314	FUEL PUMP	430137702	LEAK	20090401014	ONT
AS 350B3	3340	MOUNTING ADAPTER BRACKET		LIP WORN	20090622013	ONT
AS 350B3	6220	STATIC STOP YOKE ASSY	350A37116200	UNSERVICEABLE	20090420002	PNR
AS 350B3	6320	NUT	DHS43911142	LOOSE	20090703003	ATL
AS 350BA	2822	FUEL BOOST PUMP	P94B12209	FAULTY	20090910006	QUE
AS 350BA	2913	HYDRAULIC PUMP	704A34310006	UNSERVICEABLE	20090413003	ONT
AS 350BA	5302	DOUBLER OR PLATE	350A09014920	CRACKED	20090827007	PNR
AS 350BA	6730	ACCUMULATOR	704A34240015	FAILED	20090820006	QUE
AS 350BA	7300	FUEL CONTROL UNIT	164548540	FAULTY	20090715005	PNR
AS 350BA	7921	OIL COOLER BLOWER MOTOR	9696	SHORTED	20090708004	PNR
AS 355F2	6200	ROTOR		INCORRECT PART	20090527002	ONT
AS 355NP	2400	WIRING OF CAROUSEL SWITCH	83450001	NEW	20090702004	PNR
ATR 42 300	2100	AIR CONDITIONING		UNSERVICEABLE	20090807008	PNR
ATR 42 300	2422	INVERTER		FAULTY	20090824001	ONT
ATR 42 300	2710	SENSOR AILERON POSTION	4820208	BROKEN	20091023001	PNR
ATR 42 300	2923	PUMP		POPPING	20090807007	PNR
ATR 42 300	3210	WEIGHT ON WHEEL SWITCH	D228780001	UNSERVICEABLE	20091005004	ONT
ATR 42 300	3230	PROXIMITY SWITCH	D22878001	DENTED	20090618007	ONT
ATR 42 300	3260	LG WARNING		CONTAMINATED	20090416005	ONT
ATR 42 300	3422	EHSI	7003110912	UNSERVICEABLE	20091124003	ONT
ATR 42 300	5210	DIAPHRAM	S53G71268180	CRACKED	20090423011	ONT
ATR 42 300	5610	WINDOW	NP1588032	CRACKED	20090929005	ONT
ATR 42 300	5610	WINDOW		DISCREPANT	20090721002	PNR

MAKE/ MODEL	JASC	PART NAME	PART No	PART CONDITION	SDR No.	RGN
ATR 42 320	2923	T PIECE	MS21911D4	CHAFED	20090901008	PNR
ATR 42 320	3234	LANDING GEAR SELECTOR		STUCK	20090729002	ONT
EC 135P2	6320	Z-ARIS DAMPER	L633M2010108	LEAKING	20090402005	PNR
<i>AGUSTA</i>						
A119	3210	CROSSTUBE FWD	109057004101	SHEARED IN HALF	20090512005	PAC
AW119 MK II	3210	CROSSTUBE FWD	109057004101	SHEARED IN HALF	20090512004	PAC
<i>AIR TRACTOR</i>						
AT 802	2711	WIRE		UNSERVICEABLE	20090501006	PAC
AT 802	3246	WHEEL BEARING		DESTROYED	20090806004	PAC
AT 802A	2701	TRIGGER SWITCH	135L135R	SHORT CIRCUITED	20091207003	PAC
AT 802A	2752	STUD	D186126	BROKEN	20090723009	PAC
AT 802A	2821	INDICATOR PIN		DETACHED	20090922005	PAC
AT 802A	2841	FUEL IND		FLAME-OUT	20090604002	PAC
AT 802A	3210	ORING	MS28775314	CUT	20090728004	PAC
AT 802A	3220	NOSE GEAR SPRING	13A06633001	CRACKED	20091102003	ATL
AT 802A	5512	R/H UPPER AUX FINLET		CRACKED	20090902002	PAC
AT 802A	5710	TUBE FRAME CLUSTER		CRACKED	20091207002	PAC
AT 802A	7280	FILTER	EK905210	SEPARATED	20091207004	PAC
<i>AIRBUS</i>						
A310 304	2421	GENERATOR	729722CSN0561	CRACKED	20091109004	QUE
A310 304	2497	WIRING		DAMAGED	20090407015	QUE
A310 304	3260	BRACKET SUB-ASSY	GA595331	DAMAGED	20090505003	QUE
A310 308	2910	HOSE	200595	LEAKING	20090522001	QUE
A310 308	3150	CENTRAL WARNING		SMOKE SMELL	20090514004	QUE
A310 308	4930	DUCT PUMP	A4933101500201	CRACKED	20091203003	QUE
A319 112	1420	WIRE HARNESS	E0266QF16	CHAFED	20090819001	QUE
A319 114	2213	FLT AUGMENTATION COMPUTER	B397BAM0513	FAULTY	20090421011	QUE
A319 114	2720	RUDDER CONTROL	SC47003	ACTUATOR BOLTS	20091202002	QUE
A320 211	1000	PULLEY		CUT	20090821004	QUE
A320 211	2780	SLAT CONTROL		FAILED	20091208003	QUE
A320 211	2780	SLAT CONTROL		FAILED	20091210004	QUE
A320 211	3210	LANDING GEAR		NOT LOCK UP	20091116006	QUE
A320 211	3242	INBD WHEEL HALF	300796OPT2	FAILED	20090831002	QUE
A320 211	3246	INBORD HUB	300796OPT1	MANGLED	20090602008	QUE
A320 214	2330	CABLE ASSY	RDAM68524	CONTAMINATED	20090512001	ONT
A320 232	2612	PC BOARD (FIRE TEST)	350F51000	CORRODED AND WET	20090730001	ONT
A330 243	2913	PRESSURE LINE TUBE	AE71112112	CRACKED	20090929001	QUE
A330 243	3242	STATOR PAD	215571	DESINTEGRATED	20091216008	QUE
A330 243	8011	DUCT ASSY OF AIRSTARTER	LJ41491	CRACKED	20090915002	QUE
A330 342	2913	HYD PUMP	974800	LEAKING	20090709007	QUE
A330 343	1497	WIRING		MISWIRED	20090423004	QUE
A330 343	2330	ENTERTAINMENT SYSTEM		FAULTY	20090420003	QUE
A330 343	2820	HARNESS ASSY	F9298002800200	DAMAGED	20090504005	PNR
A340 313	2560	AFT RELEASE PIN		FAILED TO RELEASE	20090403001	QUE
<i>BAE - (RAYTHEON)</i>						
BAE 125 800A	3220	NOSE GEAR RETRACTION JACK	AIR454041	LEAKING	20090909002	PAC
HS 125 700A	5300	FUSELAGE		DAMAGED	20090811002	ONT
<i>BAE - UK</i>						
3112	3230	RADIUS ROD ASSY	1862L	FAULTY	20090609009	PNR
3112	3297	LG WIRING		BROKEN	20091119005	PNR
3112	5544	FEELSPRING STRUT MOUNT		CRACKED	20090618011	PNR
3112	8000	CONTACTOR AND GCU		FAULTY	20090728010	PNR
3212	0	WINDOW WASH LIGHT	6645160S	MELTED	20090728003	PNR
3212	3250	CABLE (LOWER)	137187E424	FRAYED	20090702011	PNR
<i>BEECH</i>						
76	3245	TUBE	923150	DEFECTIVE	20090401016	ONT
100	3250	BARREL ASSY	50820042605	FAILED	20090401004	PNR
100	3260	LG WARNING		FAULTY	20090909008	PAC
100	3497	DME	6221234012	SERVICEABLE	20090713002	PNR
200	2100	AIR CONDITIONING		SEIZED	20090916007	PNR
200	2100	AIR CONDITIONING		SIEZED	20090511003	PNR
200	2612	FIRE DETECTOR	302158	FAULTY	20090817002	QUE
200	2750	FLAP C		FAILURE	20090618005	PNR
200	2750	FLAP RELAY	SM50D7	FAILURE	20090618006	PNR
200	2823	SELECTOR VALVE		STUCK	20090807003	PNR
200	2840	FUEL FLOW TRANSMITTER	903800097	FAILED	20090803002	PNR
200	2913	HYDRAULIC PUMP	P3001	SPLINE WORN	20090507003	PNR
200	3213	TOR	1018100321	CRACKED	20090406004	ATL
200	3320	PANEL	10153005863	BURNT	20091027008	QUE
200	5210	DOOR FRAME	50430043865	CRACKED	20090619010	ONT
200	5210	DOOR FRAME	50430043865	CRACKED	20090624002	ONT
200	5310	INTERCOSTAL	1005303595	NEW	20091105003	PNR
200	5753	SKIN	10116000124	CHAFED	20090909004	PNR
200	7110	BRACKET/ANGLE	10191002221	IN SERVICE	20091006005	PNR

MAKE/ MODEL	JASC	PART NAME	PART No	PART CONDITION	SDR No.	RGN
300	3231	LG DOOR		FAULTY	20090611001	PNR
390	7310	FUEL LINE	A91941	UNSERVICEABLE	20091002006	PNR
1900C	2100	AIR CONDITIONING	10238900611	LEAKING	20090507004	PNR
1900C	2432	BATT SYSTEM		BURNT	20090708002	ATL
1900C	2435	GENERATOR		FAILURE	20090505010	PNR
1900C	2750	FLAP C		BROKEN	20090619002	PNR
1900C	2820	TUBE ASSY	3040637	CHAFED	20090511002	PNR
1900C	2820	TUBE	11492000023	WORN	20091023005	PAC
1900C	2913	POWER PACK MOTOR	481	FAILED	20090924009	PAC
1900C	3230	ELECTRIC POWERPACK MOTOR	571302	UNSERVICEABLE	20091103010	PAC
1900C	3234	LG SELECTOR		FAULTY	20090508001	PNR
1900C	3251	STEERING		INTERMITTANT	20090507002	PNR
1900C	5510	HORIZ/VERT DOUBLER		CRACK (3 INCH)	20091118013	ATL
1900C	5700	WING		CORRODED	20090519011	PAC
1900C	5751	REAR SPAR	11813000025	CORRODED	20091020005	PNR
1900C	5753	FLAPS		BROKEN	20091215004	PNR
1900C	7200	ENGINE		BLOWN OUT	20090921001	PNR
1900D	2497	C/B	7277210	INTERMITTENT	20090720001	ONT
1900D	2720	BRACKET L/H	1015240133	CRACKED BENT	20091104003	PAC
1900D	2750	FLAP FLEX SHAFT NO 3	1013800002	BROKEN/SHEARED	20091130003	ONT
1900D	3220	ACTUATOR	1123800222	CRACK	20091112002	ONT
1900D	3246	WHEEL BEARINGS		CHANGED COLOR	20090504007	PAC
1900D	3340	LIGHTING		CHAFED	20090423009	ONT
1900D	5711	SPAR		CORRODED	20090504008	PAC
1900D	5753	AS ABOVE		SHEARED	20090911006	PNR
1900D	5753	SHAFT ASSY	1013800002	UNSERVICEABLE	20090716010	PNR
3NM	5741	ATTACHED FITTING		WELD CRACK	20091113008	PNR
3NM	7120	ENGINE MOUNT	18S9100	BROKEN	20091117004	ONT
A100	3010	PEDESTAL TERMINAL BOARD	MS2721226	DISCONNECTED	20090526004	PNR
A100	3210	LANDING GEAR		DAMAGED	20090401008	QUE
A100	3233	NUT	508202085	FAULTY	20090420004	ONT
A100	3260	LANDING GEAR		FAULTY	20091223008	PNR
A100	5753	CLIP	351153963	CRACKED	20090609003	ONT
A100	7321	INTERCONNECT ROD	3010458	GOOD	20091223007	PNR
B100	2100	FLOW	10138001317	VISUALLY GOOD	20091202018	PNR
B100	2720	RESSORT & BOLVON	115524067AN12A	BROKEN	20090611003	QUE
B200	2100	BEARING	206SZZC	SEIZED	20090901005	PNR
B200	2100	AIR PLENUM	1015501472	SEPERATED	20090513002	PNR
B200	2197	SWITCH	1015551531	BROKEN	20090730011	PNR
B200	2710	AILERON CABLE	NAS306351172	FRAYED	20090828001	PNR
B200	2720	L/H RUDDER CONTROL CABLE	975240289	FRAYED	20091028004	PNR
B200	2823	FIREWALL SHUT-OFF VALVE	1013890253	INTERMITTENT	20090526003	PNR
B200	2840	HARNASS ASSY WET WING	10038006127	INTERMITTENT	20091102008	PNR
B200	3210	LANDING GEAR DRIVE SHAFT	1018100213	CRACKED	20090413002	PNR
B200	3210	LANDING GEAR		COLLAPSED	20091031001	PNR
B200	3210	LANDING GEAR		INDICATION	20091208001	PNR
B200	5210	SUPPORT	1014301781	CRACKED	20091204003	PNR
B200	5310	VENTRAL FIN AND STRUCTURE	10144001885	DAMAGED	20090507010	PNR
B200	5310	BULKHEAD	1014401091	CRACKED	20091204004	PNR
B200	5311	FRAME		CHAFED	20091110008	PNR
B200	5313	FRAME - STA 207	10143002611	CRACKED	20090723007	PNR
B200	5321	PANEL FLOOR	50440012553	CRACKED	20091204005	PNR
B200	5412	BULKHEAD	1019800202	DETACHED FLANGE	20091204002	PNR
B200	5712	RIB	50980002825	IN SERVICE	20090728011	PNR
B200	5712	RIB	50980002825	IN SERVICE	20090728012	PNR
B200	5753	FLAP ATTACH BRACKET	3516505031	WORN	20090714005	PNR
B200	7110	BRACKET	101910049140	CRACKED	20091204007	PNR
B200	7110	SKIN	1019100491112	CRACKED	20091204006	PNR
B200	7200	ENGINE		SMOKE	20090616009	PNR
B200	7322	CONDITION LEVER CONTROL C	9938000131	UNSERVICEABLE	20090723006	PNR
B200C	5300	SKIN		CRACKED	20090526009	ONT
B300	2100	BRACKET	11791006013	CRACKED	20090820011	PAC
B300	2100	CABIN HEAT DUCT	30006761	DEFORMED	20090928005	ATL
B300	2100	DUCT	30006741	DEFORMED	20090928006	ATL
B300	2824	FLOAT SWITCH	1013890347	STUCK	20090429003	PAC
B300	3210	AXLE PISTON ASSY	101810045601	ELONGATED HOLE	20091027001	ATL
B300	3230	NOSE GEAR DOWNLOCK SWITCH	1003810061	FAILED	20090709002	PAC
B300	5311	FRAME		MOVING	20091118006	PNR
B300	5510	HORIZ STAB		NO DAMAGE	20091103003	ATL
B300	5753	RIB	130116000011	CRACKED	20090415009	PNR
B90	2730	ELEVATOR TRIM ACTUATOR	50524496	ON CONDITION	20090529004	PNR
C90A	2730	PIN	NAS427K26	SERVICEABLE	20090602009	PAC

MAKE/ MODEL	JASC	PART NAME	PART No	PART CONDITION	SDR No.	RGN
C90A	3411	PITOT		OPEN	20090904011	PAC
C90A	7280	OIL CAP		NOT SECURED	20090904010	PAC
C90A	7921	TEMP CONTROL	723747	FAILED	20091214003	PNR
E90	5311	SPLICE PLATES	9912005965	NEVER INSTALLED	20091020001	PNR
E90	5520	CENTER ELEVATOR HINGE	5062000016	CRACKED	20090617003	PNR
<i>BELL TEXTRON - CAN</i>						
206	5450	LWR SUPPORT ANGLE	206023131103	NEW	20091222008	PAC
206B	2562	E L T	4536604	FAULTY	20090922007	PNR
206B	2562	G SWITCH		NEW	20090602001	QUE
206B	2700	LINEAR ACTUATOR	206062721113	FAULTY	20090730004	PNR
206B	2913	HYDRAULIC PUMP	206076022005	LEAKING	20090831004	PNR
206B	5302	PLATE	206032419001	UNSERVICEABLE	20091203007	PAC
206B	6230	SPERICAL BEARING	206010470101	UNSERVICEABLE	20090911005	PAC
206B	6230	SWASHPLATE		WORN	20090528004	PNR
206B	6300	DRIVESHAFT	206040272101	OVERHEATED	20090915001	PNR
206B	6300	SEAL	206040272101	LEAKING	20090827006	ONT
206B	6500	DRIVESHAFT ASSY	206040330001	INCORRECT ASSY	20090525003	PNR
206B	6510	SEAL ASSY	206040272	BROKEN	20090417002	QUE
206B	6520	GEAR BOX	6894171	LEAKING	20090528003	PNR
206B	7120	ENGINE MOUNT LEG	206062102013	CRACKED	20090721003	PNR
206B	7323	GOVERNOR	23065121	STIFF	20090730005	PNR
206B 3	5312	BULKHEAD	206031200139	CRACKED	20090812007	ONT
206B 3	5510	R/H FITTING	206020121010	BROKEN	20090722008	PAC
206L	6220	FEATHERING BEARING	206011118001	SCRAP	20090518001	QUE
206L	6410	T/R BLADE	206016201131	GOOD	20090407012	ONT
206L	6410	TAIL ROTOR BLADE	206016201131	DE-LAMINATED	20091013003	ONT
206L	6700	COLLECTIVE ELBOW ASSY	206001154001	CRACKED	20090401009	PAC
206L	7230	CASE HALVES COMPRESSOR	23057142	UNSERVICEABLE	20090407013	ONT
206L 1	6320	CONTROL TUBE	2060011901	CRACKED	20090728016	PNR
206L 1	6320	MAIN DRIVESHAFT	206040015015	GREASE WASHED OUT	20090728015	PNR
206L 1	6320	SUN GEAR	2060405621	SPLINES WORN	20091217009	PAC
206L 3	5302	FITTING	206031403005P	CRACKED	20091211005	PAC
206L 3	5510	SUPPORT UPPER L/H	206023119063	CRACKED	20090505002	PNR
206L 3	6210	M/R BLADE	206015011115	UNSERVICEABLE	20090706005	PNR
206L 4	2900	HYD POWER		FAILED	20090923004	QUE
206L 4	6210	SPAR SPACER	206010106005	NEW	20090921004	QUE
206L 4	6420	NUT	NAS1022A8	CRACKED	20091109001	ONT
407	5244	LATCH	90015032235	WORN	20091207006	PNR
407	5302	SUPPORT ANGLE	407023800129	CRACKED	20090605004	PAC
407	6210	M/R BLADE	407015001137	DELAMINATION	20090716007	PAC
407	6210	M/R BLADE	407015001137	DELAMINATION	20090716008	PAC
407	6220	SPRING	407310104105	SPRING FRACTURED	20091210001	ONT
407	6220	SPRING	407310104105	SPRING FRACTURED	20091210002	ONT
407	6230	BEARING	406310403101	MIGRATED	20090401001	QUE
407	6310	SEAL	209340265103	SEAL OUT	20091113004	QUE
407	6410	TAIL ROTOR BLADE	406016100119	SEPERATED	20090505006	ATL
407	6500	SLEEVE	206011732103	MOVED	20090608007	PAC
407	6510	AIRCOMM A/C PULLEY RING	S3532EC5	OVERHEATED	20090406005	PAC
407	6710	SPRING	407001109103	BROKEN	20090928004	ATL
407	6720	PITCH TUBE	406012118101	DAMAGED	20090506007	QUE
407	7410	IGNITION EXCITOR BOX	2306130	FAULTY	20091002003	PNR
407	7910	ENGINE OIL TANK	206061505115	CRACKED	20090914011	PAC
412	6220	RACE	805045625	NEW	20090812006	PAC
412EP	7921	BLOWER	209062502101	CRACKED	20090917002	QUE
427	5530	BOLTS	NAS660430	USED	20090901007	QUE
<i>BELL TEXTRON - USA</i>						
204B	5302	TAIL BOOM		CRACKED	20090512011	PNR
205A 1	2435	STARTER/GENERATOR	204060200	SHEARED	20090619003	PNR
205A 1	2500	BUCKLE	SL36L9SL36R9	CRACKED	20090826016	NCR
205A 1	6300	BOOT	2050401767	LEAKING	20091109002	PNR
205A 1	6500	FITTING	205031818001	CRACKED	20090702013	PNR
205A 1	6510	DRIVESHAFT COVER	205060922033	EXCELLENT	20090626008	PAC
205A 1	6510	FITTING	205031818001	CRACKED	20090424002	QUE
205A 1	7120	BOLT	AN17412A	BROKEN/CRACKED	20090818006	PAC
212	0	SCISSOR	212011407109	LOOSE BEARING	20090929004	PAC
212	1230	HYDRAULIC TUBE	212076433001	CRACKED	20090730008	PAC
212	2900	"T" FITTING	AS1005W060606	CRACKED	20090511008	PAC
212	5302	FORMER LOWER & SUPPORT	212030124017	CRACKED	20091211007	ONT
212	5302	SUPPORT	205032817019	CRACK	20091211006	ONT
212	5302	TAILBOOM	212030128165B	REMOVED	20091223005	QUE
212	5350	SKIN	212030099066	CRACKED	20090909003	PNR
212	5400	WASHER	204030913005	CRACKED	20090914002	ONT
212	5610	WINDSHIELD ASSY - R/H	212030464003	CRACKED	20090511007	PAC
212	6220	BARREL	204011143005	2 CRACKS	20091109006	PAC
212	6310	MAIN DRIVESHAFT	212040005103	BURNT	20090603006	PAC
212	6500	RETAINER PLATE	204040616001	WORN	20090727009	PAC
212	6520	SEAL	410082HAE	LEAKING	20090511009	PAC

MAKE/ MODEL	JASC	PART NAME	PART No	PART CONDITION	SDR No.	RGN
212	7200	VIGV ACTUATOR	118010601CV	INCORRECT ASSY	20090914010	PAC
212	8300	BEARING #14	3120118101	SPALLING	20090702010	PAC
214B 1	6220	SPINDLE ASSY	214030606005	NEW FROM BELL	20090430003	PAC
<i>BELLANCA</i>						
14 19	5553	TAIL BRACE WIRE FORWARD		BROKEN	20091019001	ONT
<i>BOEING</i>						
727 200	7532	DUCT	470962	RUPTURED	20090601004	ONT
727 223	5610	WINDOW	5893543130	CRACKED/BURNT	20090622005	ONT
727 225	2710	BEARING	KP4A	SIEZED	20091106006	ONT
727 225	5610	WINDSHIELD	5893543129	SHATTERED	20090611007	ONT
727 225	7830	SWITCH	62101	UNSERVICEABLE	20090827005	PNR
727 225A	5753	BOLT	69396421	DAMAGED	20090702003	ONT
727 227	5312	BOLT	BACB30US10P37	SHEARED/CORROD	20091117005	PNR
727 233	3260	WIRE		BROKEN	20090928001	ONT
727 243	5610	R2 WINDOW	57176244	UNSERVICEABLE	20090520004	PAC
727 247	2741	SWITCH	32EN144	USED	20091009003	PNR
727 247	5610	WINDOW		CRACKING NOISE	20091224001	PNR
727 247	5753	FLAP HYDRAULIC MOTOR	MS9391130ZE4C	LEAKING	20090625004	PNR
727 260	2742	ACTUATOR		CORRODED	20090526008	ONT
727 260	5610	WINDSHIELD	5893543129	ON CONDITION	20091022004	ONT
737 200	5430	ANGLE	654957323	BROKEN	20090618008	ONT
737 217	5610	WINDOW	58935733	CRACKED	20090514001	ONT
737 248C	5610	MIDDLE PANE		SHATTERED	20090408004	ONT
737 275C	1000	SCREW	BACB30NN4K11	BOTTOMED OUT	20091022001	PNR
737 700	2612	FAN CASE FIRE LOOP	325027302	CHAFED	20090929006	ONT
737 700	5300	EXOGRID		CHAFFING	20091125005	ONT
737 700	5321	WET FLOOR AREA		CORRODED	20091013002	ONT
737 7CT	2200	LOW RANG RADIO ALTIMETER	66500070101	FAULTY	20090821003	PNR
737 7CT	2710	ABSA AND ABSB	BACC2A6B04398EG	WORN	20091029002	PNR
737 7CT	3222	AXLE NLG		SHEARED OFF	20090914006	PNR
737 7CT	5280	PUSHROD	162A31084	CRACKED	20090909007	PNR
737 800	2597	WIRING		SHORTED	20090715003	QUE
737 81Q	5755	CABLE	580250403	BROKEN	20091217002	ATL
737 8AS	2330	CONNECTOR	SJS816120	BURNT	20090708006	ATL
737 8AS	5430	PANEL	112N61012	CRACKED	20090601001	ATL
737 8BK	2810	ADAPTER PRESS FUEL SERVICE	2670054M2	LEAKING	20090717007	ONT
737 8HX	5610	SCUFF PLATE	141A48421	DAMAGED	20091202016	ONT
757 236	3416	STANDBY ALTIMETER	LK359	OVERHAULED	20090421009	ONT
757 28A	2913	PRESSURE SWITCH	211C223327	ERATIVE	20091229003	ONT
757 2Y0	2497	WIRE	W5100000520	SHORTED	20090622007	ONT
767 223	5610	WINDOW	141T480013	SHATTERED	20090618009	ONT
767 223	7500	SENSE LINE	332T12166	BROKEN	20090925003	ONT
767 333	3246	MAINWHEEL INNER BEARING	M224749	FAILED	20091125001	QUE
767 333	7110	BRACKET		CRACKED	20090702002	QUE
767 375	2100	ACM LUG		FAULTY	20090818003	QUE
767 375	2100	AFT CARGO HEAT DUCT	214T640441	RUPTURED	20090702001	QUE
767 3Y0	3411	BRACKET		BRACKET CHAFED	20090728006	QUE
777 233LR	1420	REGULATOR	T0714R	CARBON TRACES	20091007002	QUE
777 333ER	2100	SOFTWARE	3676GRS10400	MALFUNCTIONED	20091022003	QUE
777 333ER	2750	#8 TRANSMISSION	256W311010	FAILED	20090811001	QUE
777 333ER	2750	FLAP TRANSMISSION	256W311010	FAILURE	20090408003	QUE
777 333ER	7310	ENG FUEL FILTER HOUSING	18350	ARCHING DAMAGE	20091215003	QUE
<i>BOEING HELICOPTERS</i>						
BV 107 II	7300	LIMIT SWITCH		FAILED	20090911001	PAC
<i>BOMBARDIER</i>						
BD 100 1A10	2131	CABIN PRESSURE CNTL	92175A030400	FAILURE	20090529005	QUE
BD 100 1A10	2133	VALVE	81141A010302	FAULTY	20090626003	QUE
BD 100 1A10	2140	ELECTRICAL HEAT MAT	343606	DISCOLORED	20090714007	QUE
BD 100 1A10	2400	RSPC	980GC02Y06	BURNT/ARCING	20090728007	QUE
BD 100 1A10	2900	EDP PRESSURE LINE ASSY	1005354233009	CRACKED	20090604008	QUE
BD 100 1A10	2910	EDP PRESS TUBE (R/H)	1005354233009	LEAKING	20091002001	QUE
BD 100 1A10	2913	ENGINE DRIVEN PUMP	5116003	OVERHEATED	20091119002	QUE
BD 100 1A10	2913	QUICK DISCONNECT COUPLING	AE99116J	SEAL DAMAGED	20091104002	QUE
BD 100 1A10	2916	HYDRAULIC RESERVOIR	33147500	LEAKING	20090710004	QUE
BD 100 1A10	2923	PUMP	9558057	FAULTY	20090901006	QUE
BD 100 1A10	3243	BRAKE CONTROL UNIT	14210451	VIBRATING	20091113007	QUE
BD 100 1A10	5240	DOOR LATCH		MISSING	20090825003	QUE
BD 700 1A11	2450	AC POWER DIST	770705D	FAILED	20090526001	QUE
CL600 2B19 (RJ100)	1210	DRAIN FITTING	600627991	PLUGGED	20090710006	ATL
CL600 2B19 (RJ100)	2150	DUCT	601R950687	LEAKING	20090405001	QUE
CL600 2B19 (RJ100)	2200	AUTOPILOT		FAULTY	20090428001	QUE
CL600 2B19 (RJ100)	2420	WIRE	XC3A8CORN	BURNT	20090826017	ATL
CL600 2B19 (RJ100)	2460	CONTACTOR	D7GSZ	CONTAMINATED	20090823001	QUE

MAKE/ MODEL	JASC	PART NAME	PART No	PART CONDITION	SDR No.	RGN
CL600 2B19 (RJ100)	2460	RELAY UNDER VOLTAGE SENS	VS643	FAILED	20090721001	ATL
CL600 2B19 (RJ100)	2497	WIRING	756654A	DAMAGED	20090512009	QUE
CL600 2B19 (RJ100)	2520	PIN	1661038	CORRODED	20090816001	ATL
CL600 2B19 (RJ100)	2710	AILERON C		CONTAMINATED	20090423003	QUE
CL600 2B19 (RJ100)	2710	BEARING	27295105	SEIZED	20090514005	ATL
CL600 2B19 (RJ100)	2722	ACTUATOR ASSY	274273	INCORRECT ASSY	20091209001	NCR
CL600 2B19 (RJ100)	2740	STABILIZER CONTROL		STUCK	20090723001	QUE
CL600 2B19 (RJ100)	2740	STABILIZER CONTROL		FAULTY	20090906001	QUE
CL600 2B19 (RJ100)	2740	STABILIZER CONTROL	83963	FAULTY	20090722001	ATL
CL600 2B19 (RJ100)	2742	ACTUATOR	83963	FAULTY	20090724001	ATL
CL600 2B19 (RJ100)	2750	BRAKE POSITION SENOR UNIT	855D1009	FAILED	20090729003	ATL
CL600 2B19 (RJ100)	2750	SHAFT- FLEXABLE DRIVE	1104SD10040	BROKEN	20090618013	QUE
CL600 2B19 (RJ100)	2750	UNIT SKEW DETECTOR	8004301	SERVICABLE	20090506010	PAC
CL600 2B19 (RJ100)	2750	PDU	865D1007	FAILED	20091007003	ATL
CL600 2B19 (RJ100)	2750	SKEW DETECTION UNIT	8004301	FAULTED	20091202004	ATL
CL600 2B19 (RJ100)	2751	FPTU	601R930303	FAULTY	20090703005	QUE
CL600 2B19 (RJ100)	2751	POSITION INDICATOR	855D10013	FAULTY	20090708008	ATL
CL600 2B19 (RJ100)	2752	FLAP ACTUATOR	853D10019	INTERNAL DISCONN	20090502002	QUE
CL600 2B19 (RJ100)	2752	FLAP ACTUATOR R/H #3	853D10024	FAULTY	20090405002	QUE
CL600 2B19 (RJ100)	2752	FLAP ACTUATOR	85210023	FAILED	20091214006	ATL
CL600 2B19 (RJ100)	2752	FLAP ACTUATOR	852D10023	FAILED	20091019007	ATL
CL600 2B19 (RJ100)	2752	FLAP ACTUATOR	854D10023	FAILED	20091113009	ATL
CL600 2B19 (RJ100)	2752	FLAP ACTUATOR	854D10024	JAMMED	20091206001	QUE
CL600 2B19 (RJ100)	2760	FLIGHT SPOILER OUTBD PCU	270007	WRONG WARNING MESSAGE	20091107003	QUE
CL600 2B19 (RJ100)	2840	FQGC	73664320	FAULTY	20090924002	QUE
CL600 2B19 (RJ100)	3010	THERMAL SWITCH	601R593201	NEW	20090624004	ATL
CL600 2B19 (RJ100)	3230	LANDING GEAR	16600101	FAULTY	20090619005	ATL
CL600 2B19 (RJ100)	3230	LANDING GEAR	17051101	FAULTY	20090618014	QUE
CL600 2B19 (RJ100)	3230	LANDING GEAR	4622	FAULTY	20090618015	QUE
CL600 2B19 (RJ100)	3230	LANDING GEAR	2605890001	SEIZED	20090513006	ATL
CL600 2B19 (RJ100)	3230	LANDING GEAR	750005000	WRONG WARNING MESSAGE	20091118002	QUE
CL600 2B19 (RJ100)	3246	MAIN WHEEL	50105711	BROKEN	20090924001	QUE
CL600 2B19 (RJ100)	3246	MAIN WHEEL ASSY	50105711	FLANGE CRACKED	20090629005	ATL
CL600 2B19 (RJ100)	3250	NOSE GEAR STEERING ACT	16300106	UNSERVICEABLE	20091103004	ATL
CL600 2B19 (RJ100)	3320	FLUORESCENT LIGHT FIXTURE	BC10065003	SHORTED	20091218001	ATL
CL600 2B19 (RJ100)	3397	PIN	1661038	CORRODED	20090813017	ATL
CL600 2B19 (RJ100)	4900	APU	38004883	SEIZED	20090502004	QUE
CL600 2B19 (RJ100)	4930	GUIDE VALVE	218423	MISSING	20090918003	ATL
CL600 2B19 (RJ100)	4930	APU FUEL LINE	38834491	CHAFED	20090521004	ATL
CL600 2B19 (RJ100)	4930	SHROUD AND FUEL FEED LINE	C68C32	CORROSION/PUNCTU	20090616001	QUE
CL600 2B19 (RJ100)	4960	CONTACTOR GENERATOR	ZCDB9A023	OVERHEATED	20091118001	QUE
CL600 2B19 (RJ100)	5210	ICE BREAKER CABLE	601R3181273	BROKEN	20090722009	ATL
CL600 2B19 (RJ100)	5210	ICE BREAKER CABLE	601R3181273	FRAYED	20090722010	ATL
CL600 2B19 (RJ100)	5210	INNER-HANDLE RETENTION-ME	6003804017	ON CONDITION	20090615003	ATL
CL600 2B19 (RJ100)	5230	SURROUND FRAME RADIUS	601R250279	CRACKED	20091230001	ATL
CL600 2B19 (RJ100)	5240	FITTING SERVICE DOOR	601R3872317	CRACKED	20091208005	ATL
CL600 2B19 (RJ100)	5240	FITTING:SERVICE DOOR	601R3872317	CRACKED	20091208002	ATL
CL600 2B19 (RJ100)	5344	FITTING	601R3807413	CRACKED	20091019002	ATL
CL600 2B19 (RJ100)	5600	WINDSHIELD	NP13932111	SHATTERED	20090407018	QUE
CL600 2B19 (RJ100)	5610	SIDE WINDOW	NP1393222	CRACKED	20090423002	QUE
CL600 2B19 (RJ100)	5610	SIDE WINDOW	NP1393226	SHATTERED	20090527004	QUE
CL600 2B19 (RJ100)	5610	WINDOW		CRACKED	20090407022	QUE
CL600 2B19 (RJ100)	5610	WINDOW	NP1393222	CRACKED	20090407019	QUE
CL600 2B19 (RJ100)	5610	WINDOW SIDE (R/H)	NP1393222	ELECTRICAL ARC	20091118004	QUE
CL600 2B19 (RJ100)	5610	WINDOW SIDE (R/H)	NP1393226	SHATTERED	20091118003	QUE
CL600 2B19 (RJ100)	5610	WINDSHIELD	NP13932113	CRACKED	20091107001	QUE
CL600 2B19 (RJ100)	5610	WINDSHIELD (R/H)	NP13932110	INNER PANE FAILED	20091206003	QUE
CL600 2B19 (RJ100)	7110	LEFT UPPER ENGINE COWL	22850080801	LOST	20090525006	QUE
CL600 2B19 (RJ100)	7200	FAN BLADE	6018T30P14	BENT	20090429001	ATL
CL600 2B19 (RJ100)	7540	SENSING ELEMENT	356124310	DAMAGED	20090723003	QUE
CL600 2B19 (RJ440)	3211	LG ATTACH	17307107	SWAPPED HYD LINE	20091228003	QUE
CL600 2C10 (RJ700)	2460	LDCPC	900GC02Y01	FAILED AND BURNE	20090507001	QUE
CL600 2C10 (RJ700)	2710	AILERON C		CONTAMINATED	20090521002	QUE
CL600 2C10 (RJ700)	2782	SLAT ACTUATOR	766385C	FAILED	20091206002	QUE
CL600 2C10 (RJ700)	3418	STALL WARNING	C16258AA	FAULTY	20090908003	QUE
CL600 2C10 (RJ700)	5600	WINDSHIELD L/H	NP1393215	CRACKED	20090407017	QUE
CL600 2C10 (RJ700)	5610	SIDE WINDOW	NP1393222	CRACKED	20090423001	QUE
CL600 2C10 (RJ700)	5610	WINDOW	NP13932112	CRACKED	20090407020	QUE
CL600 2C10 (RJ700)	5610	WINDOW	NP1393216	CRACKED	20090407021	QUE
CL600 2C10 (RJ700)	5610	WINDSHIELD R/H	601R3303318	CRACK	20090413004	QUE
CL600 2D15 (705)	2130	HINGE	BA690951031	WORN OUT	20090623001	ATL
CL600 2D15 (705)	3050	RADOME	GC21905045	DELAMINATED	20091013006	ATL

MAKE/ MODEL	JASC	PART NAME	PART No	PART CONDITION	SDR No.	RGN
CL600 2D15 (705)	3242	FITTING QUICK DISCONNECT	H155006191001	LOOSE	20090624003	ATL
CL600 2D15 (705)	3610	PNEUMATIC SYSTEM	GG67080301	EXPANSION BELOW	20090402004	ATL
CL600 2D15 (705)	4990	OIL FILTER	WE38817671	CRUSHED	20091102012	ATL
CL600 2D24 (RJ900)	2131	CONTROLLER ACS	GG69095026	FAULTY	20091107002	QUE
CL600 2D24 (RJ900)	2200	AUTOFLIGHT SYSTEM		INCORRECT	20090808002	QUE
CL600 2D24 (RJ900)	2312	COMM SYSTEM	8221115001	FAILURE	20090602002	PNR
CL600 2D24 (RJ900)	2360	STATIC DISCHARGE		DAMAGED	20090501003	PNR
CL600 2D24 (RJ900)	2400	CIRCUIT BREAKER	MS220733	DAMAGED	20090502001	QUE
CL600 2D24 (RJ900)	2530	GALLEY EQUIP		BURNT	20090720005	QUE
CL600 2D24 (RJ900)	2730	ELEVATOR CONTROL	510007	BROKEN	20091028012	QUE
CL600 2D24 (RJ900)	3242	FTG HYD QUICK DISC	H155006191001	INCORRECT ASSY	20090820010	QUE
CL600 2D24 (RJ900)	3420	AHRU	6229336400	UNSERVICEABLE	20090723002	QUE
CL600 2D24 (RJ900)	3500	CAPILARY LINE	S70477	BROKEN	20090727006	PNR
CL600 2D24 (RJ900)	5610	SIDE WINDOW	NP13932211	CRACKED	20090808001	QUE
CL600 2D24 (RJ900)	5610	WINDSHIELD	NP13932113	CRACKED	20090624005	QUE
CL600 2D24 (RJ900)	5610	WINDSHIELD	NP13932114	CRACKED	20091111001	QUE
CL600 2D24 (RJ900)	5755	PCU	5120011	JAMMED	20091002007	QUE
CL600 2D24 (RJ900)	7200	ENGINE	CF348C5	DAMAGED	20090606003	QUE
CANADAIR						
CL215 1A10	2900	HYD PRESSURE LINE	AE2460701H0170	CRACK	20090505007	QUE
CL215 1A10	2913	PUMP	66WAL300	LEAKING	20090811003	PAC
CL215 1A10	3242	BRAKE HOUSING	2604141	CRACKED	20091215005	PNR
CL215 1A10	5240	PISTON	33130131	CRACKED	20091215001	PNR
CL215 1A10	5330	FUSELAGE SKIN	21530027116	CRACKED	20091215007	PNR
CL215 1A10	5711	FR	21510024808	CORRODED	20090402002	QUE
CL215 1A10	7421	SPARK PLUG		USED	20090527001	QUE
CL215 6B11(CL215T)	5240	UPLOCK ACTUATOR	215750098	CRACK	20091106007	QUE
CL215 6B11(CL215T)	7603	POWER LEVER RODEND	87620097025	LOOSE	20091105005	QUE
CL215 6B11(CL415)	1497	WIRING		OVERHEATED	20090505004	QUE
CL215 6B11(CL415)	2810	FUEL CELL	21564002	LEAKING	20090910008	ONT
CL215 6B11(CL415)	2820	FUEL PUMP HEATER T FITIN	B313007D4	INCORRECT ASSY	20091106005	QUE
CL215 6B11(CL415)	3210	LOWER MEMBER	2158750162	CRACKED	20090901003	QUE
CL215 6B11(CL415)	3233	NOSE GEAR ACTUATOR	15030016	FAULTY	20090812010	QUE
CL215 6B11(CL415)	5244	WATER DOOR #3	215T3350617	CORRODED	20090609002	QUE
CL215 6B11(CL415)	5310	FUSELAGE HULL		CRACKED	20090421010	ONT
CL215 6B11(CL415)	5620	R/H GLAZING WINDOW	215330176	LOST	20090615007	QUE
CL600 2A12(601)	2932	CANNON PLUG		SHORTED	20090414001	NCR
CL600 2A12(601)	7700	SIGNAL CONTROL UNIT	601639039	UNSERVICEABLE	20090831001	NCR
CL600 2B16(601 3A)	2913	MOTOR	9008D152	FAULTY	20090622006	QUE
CL600 2B16(601 3A)	5320	FUSELAGE		CRACKED	20090623003	QUE
CL600 2B16(604)	2140	HEATER	307402	OVERHEATED	20090728002	QUE
CL600 2B16(604)	2460	TERMINAL SH5PA & SH6PA	JB17	BRULE	20090614001	QUE
CL600 2B16(604)	2612	ELEMENT HT SENSING	24410457	CHAFED	20090731005	PAC
CL600 2B16(604)	3100	RECORDING SYSTEM		WRONG WARNING MESSAGE	20091201004	PNR
CL600 2B16(604)	3234	SOLENOID	601R751451	OPEN CIRCUIT	20091202015	ATL
CL600 2B16(604)	3320	NEON LIGHT	AL1235T360	MELTED	20090401011	QUE
CL600 2B16(604)	4900	BEARING		FAILED	20090716001	QUE
CL600 2B16(604)	7110	COWLING		LOST	20090901004	QUE
CL600 2B16(604)	7110	COWLING		JAMMED	20091120002	QUE
CL600 2B16(604)	7200	ENGINE		WRONG WARNING MESSAGE	20091201001	QUE
CL600 2B16(604)	7603	LEVER	1603730003	STIFF	20091218003	PNR
CL600 2B16(604)	7603	SPRING CLIP	22850583801	WORN PIP HOLES	20091105001	ONT
CESSNA						
150F	1000	FLOOR SCREW	S1021Z810	SERVICEABLE	20090417001	PAC
150L	5412	BULKHEAD		BENT	20090708001	ONT
150M	0	NOT REPORTED		FAILURE	20090409003	ONT
150M	3245	TUBE TIRE	302246401	DEFECTIVE	20090401015	ONT
150M	3411	PITOT		MELTED	20090421008	ONT
150M	5240	CHANNEL	41253330412	CRACKED	20091223006	QUE
150M	5347	STIFFNER	4102362	CRACKED	20090406007	ONT
152	1420	ELECTRICAL CONTACTOR	S24752	OPEN	20091019004	PAC
152	2434	ALTERNATOR		FAILED	20090708009	PAC
152	3220	NOSE GEAR FORK	4425037	UNSERVICEABLE	20091009001	PAC
152	5510	BRACKET	4320049	CRACKED	20090415006	PAC
152	5510	BRACKET	4320049	CRACKED	20090415007	PAC
152	5510	R/H REAR FIN BRACKET	4310093	GOOD	20091209005	QUE
152	5711	CHANNEL SPAR RIGHT HAND	4224056	CRACKED	20091026001	PNR
152	7414	MAGNETO	4381	RUNNING ROUGH	20091005007	ONT
172E	2701	YOKE	5117821	CORRODED	20090813006	QUE
172H	5540	RUDDER BRACKET	53101812	CRACKED	20090512007	PNR
172K	7430	IGNITION SWITCH	C2925010105	WORN	20090710002	PAC
172M	3220	NOSE GEAR FORK	543043498	CRACKED	20091117002	ONT
172M	5412	BULKHEAD		BUCKLED	20091021014	PNR

MAKE/ MODEL	JASC	PART NAME	PART No	PART CONDITION	SDR No.	RGN
172N	2436	VOLTAGE REGULATOR	VR500010	FAILED	20091021010	PNR
172N	2820	FUEL VENT LINE		VENTING OUT	20091005012	PNR
172N	3411	ALTERNATE STATIC VALVE	201314213	LEAKING	20091214005	PNR
172N	5520	BRACKET ASSY	5320061	LOOSE	20090618002	ONT
172N	7414	MAGNETO	4371	USED	20091110002	PNR
172N	8011	STARTER	PRESTOLITEMHB4	BURNT	20091209006	QUE
172N	8011	STARTER	14924LS	FAILED	20091102002	PNR
172P	2434	ALTERNATOR		FAILED	20090915008	PAC
172P	2721	RUDDER CONTROL		CRACKED	20091021005	PNR
172R	3340	SWITCH	W31X100010	UNSERVICEABLE	20091103005	PNR
172RG	3210	LANDING GEARBODY ACTUATOR	12810016	HOLE IN CUSTING	20091019005	ONT
172RG	7800	EXHAUST SHOCK MOUNT	125025510	BROKEN	20091116001	PNR
172S	2434	ALTERNATOR		FAILED	20090923003	PNR
172S	2710	AILERON CNTL		BROKEN	20090708003	ONT
172S	2710	FAIRLEAD	52264712	WORN	20090902003	PNR
172S	3240	L/H BRAKE LINE		CHAFFED LEAKING	20091020002	PAC
172S	3242	BRAKE LINE	500118127	WORN	20090908008	PNR
172S	3242	BRAKE LINE	500118126	PIN HOLE	20090908009	PNR
172S	3243	PISTON	98820125	BROKEN	20091102009	ONT
172S	8011	STARTER		BROKEN	20090826006	PNR
172S	8011	STARTER		BROKEN	20090618004	PNR
180J	2720	FORWARD RUDDER CABLE ASSY	510105173	FRAYED	20091103009	PAC
182A	5753	FWD FLAP RETURN CABLE	51010521	WORN/FRAYED	20090424004	PAC
182J	3210	LOWER OLEO FITTING	7436061	CRACKED	20090622003	ONT
182N	7111	RIGHT HAND SIDE COWL FLAP	752609201	DETACHED	20090520001	QUE
182Q	5300	SKIN LOWER FWD	07133343L/H	CORRODED	20090902001	ONT
207A	5510	STABILIZER FR	12320131	CRACKED	20090522003	PNR
208	3246	FITTING	8A027000003	CORRODED	20091211011	PAC
208	5522	MASS BALANCE	2634014-1	CORRODED	20090924010	PAC
208B	2710	AILERON C		FAULTY PART	20090615009	ONT
208B	2750	SUPPORT BRACKET	26111441	USED	20091207005	PNR
208B	3246	WHEEL ASSY	40179	FLAT TIRE	20090409001	ATL
208B	3246	WHEEL ASSY	16211800	CRACKED	20091002005	PAC
208B	5531	WEB 040 2024	26310217	FRETTE	20091022005	PNR
208B	7310	FLOW DIVIDER		FAULTY	20091206006	ATL
210L	3220	CABLE ASSY RETR STEP	12115041	BROKEN	20090929003	PNR
210R	3233	LANDING GEAR MOTOR	98811411	OVER HEATED	20090430001	ONT
337G	3240	BRAKE		WORN	20090712001	ONT
401A	3210	ADJUSTING SCREW	84113	BROKEN	20090710007	PNR
401B	8120	TURBOCHARGER		BROKEN	20090807004	PNR
402	3210	DOWNLOCK SWITCH	S20884	USED	20090616011	QUE
402C	3340	LIGHTING		GEAR STRIPPED	20090513004	PNR
414	5730	WING SKIN		CRACKED	20091116007	PNR
421C	3220	SKIN	52130409	CRACKED	20090728008	ONT
425	1000	NVT	MS178263	MISSING	20090826004	NCR
425	2210	CLIP-TURNBUCKLE	MS212561	MISSING	20090826005	NCR
425	2720	GUARD PIN	NAS427K11	BROKEN	20090826003	NCR
425	2730	BRACKET ELV HINGE OTBD	58341309	CRACKED	20091021008	PNR
425	5330	PLATE	595105223	RUSTED AND PITTE	20091021007	PNR
425	5753	SKIN	512205393	CHAFED	20091021009	PNR
525	2731	ELEVATOR TRIM TAB	C2TE43ATAB	DISPLACED	20090617002	PNR
525	3010	HYDRAULIC ASSY	63170161	CRACKED-OFF	20091209004	ATL
525B	2915	HYDRAULIC PRESSURE SWITCH	99123734	INTERMITTENT	20091015005	PNR
550	2100	SPACER		DEBONDED	20091015001	ONT
550	2730	ELEV TRIM CABLE	6565007108	WORN	20090825001	ONT
550	2731	R/H TAILCONE SKIN	651201030	WORN	20090821008	ONT
550	3220	NOSE GEAR UPLOCK		LOOSE	20090609005	PNR
550	3220	WELDED NUT PLATE BRACKET		CRACKED	20091211001	ONT
550	3220	WELDED NUT PLATE BRACKET		CRACKED	20091211002	ONT
550	5347	LINK	5514501111	CRACKED	20091015002	ONT
680	3320	DOWNWASH LIGHT	CLE23602	BURNT	20090807010	PNR
750	2100	AIR CONDITIONING		FOREIGN OBJECT	20091128001	ONT
A185F	7600	THROTTLE PLATE JAMMING	625601	FOREIGN OBJECT	20091005002	ONT
R182	3310	TRANSISTOR	2N3055	BURNT	20090512010	QUE
S550	2100	MOTOR		BURNT	20090921005	PNR
T206H	2421	AC ALTERNATOR		FAULTY	20091216004	ONT
T206H	2730	CABLES	ICA8PR6	FRAYED	20090430004	ATL
T206H	5240	SPLIT PIN	NAS561P46	NEW	20090505009	ONT
T210K	2750	FLAP FOLLOWUP CABLE	98600581	SHATTERED	20090826018	PAC
T310P	3220	LANDING GEAR		STUCK	20091124006	PNR
TU206G	7314	FUEL PUMP ANEROID	6467683AR	FAILED	20090707002	PNR
U206	2710	SCREW	AN5158R6	MISSING	20090402003	ONT

MAKE/ MODEL	JASC	PART NAME	PART No	PART CONDITION	SDR No.	RGN
U206E	2730	LOWER ELEVATOR CABLE	1260505129	FRAYED	20090707009	ONT
U206E	5751	AILERON HINGE	12205317	CRACKED	20090707007	ONT
U206E	5751	AILERON HINGE OB	122005217	CRACKED	20090707008	ONT
U206F	2434	ALTERNATOR		FAILED	20090818002	PNR
U206F	2730	ELEVATOR TRIM		BROKEN SHAFT	20091202010	ONT
U206F	3210	CENTERING LOCK	12436292	FAILED	20090707010	PNR
U206F	3220	LANDING GEAR		BENT	20090806010	PNR
U206F	3246	BOLTS	NAS14643NAS145	BENT	20090806008	PNR
U206F	5730	SPAR BLOCK/SPAR PLATE	12221093	ORIGINAL	20091203006	PNR
U206G	2421	ALTERNATOR	DOFF10300BR	FAILED	20090620001	PNR
U206G	3213	FITTING	12116011	CRACKED	20090407008	PNR
<i>CONAIR</i>						
FIRECAT	2900	4 RIGID TUBING		CHAFED	20090616004	PAC
FIRECAT	3230	STRIKER UP LOCK SWITCH		STICKY	20090603003	PAC
FIRECAT	3233	DOOR	89H10547	INCORRECT ASSY	20090806014	PAC
FIRECAT	3233	GEAR DOOR ACTUATOR	89H10527	LEAKING	20090723008	PAC
FIRECAT	3242	BRAKE	147515	DAMAGED	20090608005	PAC
FIRECAT	7300	PULLEY		STRIPPED	20090723010	PAC
FIRECAT	7600	CABLE		SERVICEABLE	20090911002	PAC
<i>CONVAIR - CAN</i>						
340	2434	AC GENERATOR	976J2525	FAULTY	20090622015	PAC
340	2750	FLAP C	20772	FAULTY	20090617008	PAC
340	2910	HYDRAULIC SYSTEM		FAILED	20090824002	PAC
340	3020	DE-ICE SYSTEM		DELAMINATED	20090720006	PAC
340	3260	SWITCH	BZ7RQ67T	UNSERVICEABLE	20090428003	PAC
340	7230	COMPRESSOR	6828400	DAMAGED	20091118005	QUE
440	2720	PIN		CONSOLIDATEDVAL SHEARED	20090506013	PAC
440	3234	LANDING GEAR LEVER	3408500004	STICKY	20090623002	QUE
440	7210	REDUCTION GEAR		FAILED	20090928002	QUE
<i>CURTISS WRIGHT</i>						
C46D	2731	ELEVATOR CONTROL	201305756	CRACKED	20090722007	PNR
C46D	7922	THERMOSTATIC VALVE		LEAKING	20091027002	PNR
<i>DASSAULT</i>						
FALCON 20F5	3240	VALVE-RELAY EMERGENCY	A11124654	LEAKING	20090819002	ONT
FALCON 2000EX	2823	ACTUATOR	D97D006071	FAILURE	20091103008	PNR
<i>DEHAVILLAND - CAN</i>						
DHC 2 MKI	1220	OIL CAP	C2P383	LOOSE	20090625001	QUE
DHC 2 MKI	2000	TORQUE TUBE	C2UT473	CORRODED	20090817003	PAC
DHC 2 MKI	2720	RUDDER CABLE ASEMBLY	C2CF741AND	FRAYED	20090402008	PAC
DHC 2 MKI	2720	RUDDER C		FRAYED	20090601006	ONT
DHC 2 MKI	2720	RUDDER C		FRAYED	20090601007	ONT
DHC 2 MKI	2720	RUDDER C		FRAYED	20090601008	ONT
DHC 2 MKI	2730	ELEVATOR CABLE ASSY	C2CF813A	FRAYED	20090402009	PAC
DHC 2 MKI	2730	ELEVATOR CABLE ASSY	C2CF815A	FRAYED	20090402010	PAC
DHC 2 MKI	2810	FUEL COCK ELBOW	C2P1107	CRACKED	20091009004	PAC
DHC 2 MKI	2810	SUMP OUTLET PIPE	NOPARTNUMBER	CORRODED	20091015004	PNR
DHC 2 MKI	2910	HOSE	MILH6000	WORN	20090917003	QUE
DHC 2 MKI	5311	BIRD CAGE	C2FS3203A	CRACKED	20090622004	ATL
DHC 2 MKI	5520	TOR	QUETUBE	CORRODED	20090416006	PNR
DHC 2 MKI	5551	BRACKET-FT TAILPLANE P/U	C2TP159A	CRACKED	20090407010	PAC
DHC 2 MKI	5753	FLAP BRACKET L/H CENTER	C2W143	CORRODED	20091229004	PAC
DHC 2 MKIII	2701	CONTROL COLUMN LOWER	C2CF33951	CRACKED	20091118010	ONT
DHC 2 MKIII	3246	FITTING AFT WIRE PULL	VALTBS12441	BROKEN	20090702012	NCR
DHC 2 MKIII	3246	FITTING AFT WIRE PULL	VALTBS12441	BROKEN	20090813016	NCR
DHC 2 MKIII	5510	STAB ATTACH FITTING	C2TP187A	CRACKED	20090615004	PNR
DHC 2 MKIII	5530	FWD STAB ATTACH FITTING	CT2TF10291	CORRODED LEV 2	20091204011	PNR
DHC 2 MKIII	5532	FUSELAGE FRAME	C2FS705706	CRACKED	20090422002	PNR
DHC 3	2701	CONTROL COLUMN SECTION	C3CF48	CRACKED	20090421014	PAC
DHC 3	2730	ACTUATOR SCREW	C3CF2913	BINDING	20091021002	PNR
DHC 3	2750	BELLCRANK ASSY FLAP	C3CF4011	CRACKED	20091125002	QUE
DHC 3	5342	BOLT	NAS14729	CRACKED	20090910003	ONT
DHC 3	5541	SPAR	C3TF82	CRACKED	20090910002	ONT
DHC 3	5544	BRACKET	C3FS16911	CORRODED	20090606002	PNR
DHC 3	5730	WING SKIN		CORRUGATED	20091223001	QUE
DHC 3	5753	FLAP		CRACKED	20091201005	PAC
DHC 3	7532	VALVE		NOISY	20090707003	ONT
DHC 3	8550	OIL FILTER	305925801	UNGLUED	20091223002	ONT
DHC 3T	1000	BOLT	HAS0004316	INCORRECT PART	20090424008	NCR
DHC 3T	1000	BOLT	NAS14729	NOT DAMAGED	20091027011	PAC
DHC 3T	2400	CIRCUIT BREAKER	MS265745	CRACKED	20091028001	QUE
DHC 3T	3246	FRONT STRUT	C3FU1086	CRACKED	20090424007	PAC
DHC 3T	3246	FRONT STRUT	C3UF1085	CRACKED	20090424006	PNR
DHC 6	2751	FLAP POINTER ASSY	C6JF12881	INCORRECT ASSY	20090902004	PNR
DHC 6	3250	LEVER STEERING	C6CFM123427	CRACKED	20090916003	PNR
DHC 6	5540	RUDDER STOP ASSY	TBDSFCFS1837	RECALLED	20090817001	ONT

MAKE/ MODEL	JASC	PART NAME	PART No	PART CONDITION	SDR No.	RGN
DHC 6 100	3246	BOLT	AN620A	BROKEN	20090703001	PNR
DHC 6 100	7261	ENGINE	PT6A20	SERVICEABLE	20090821002	ATL
DHC 6 300	2421	CABLE	C6NF10381	BURNT OFF	20090706006	ATL
DHC 6 300	2497	GENERATOR RELAY CABLE	C6NF10385	NEW	20090422001	PNR
DHC 6 300	2730	CABLE ASSY ELEVATOR	C6CF11491	BROKEN	20091030007	NCR
DHC 6 300	2810	FUEL CELL	C6SC10583	REPAIRED	20090619011	PNR
DHC 6 300	2841	FUEL QUANTITY TRANSMITTER	39108703082	INSPECTED	20090610002	PNR
DHC 6 300	3210	GEAR LEG ASSY R/H	C6UM11108	INCORRECT PART	20090401006	PNR
DHC 6 300	3210	MAIN LANDING GEAR	C6UM11104	BROKEN	20090608006	NCR
DHC 6 300	3220	PISTON TUBE	711419	DAMAGED	20090416002	PNR
DHC 6 300	5730	UPPER SHROUD SKIN	C6W100737	BROKEN	20091208008	NCR
DHC 6 300	7300	DUST COVER	C6PF105427	NEW	20090514002	PNR
DHC 7	3250	SPIGOT STUD	161591	SHEARED	20090821007	NCR
DHC 7 102	7170	TUBE ASSY	77900155003	INCORRECT ASSY	20091126002	ONT
DHC 8 100	5610	WINDSHIELD	80260011	CRACKED	20090617004	QUE
DHC 8 102	1000	BONDING JUMPER	MS250837BBX	USED/DAMAGED	20091123003	PNR
DHC 8 102	1400	HARDWARE		OVERHEATED	20091013007	ATL
DHC 8 102	2400	ELECTRICAL WIRING		CHAFED	20091118012	ATL
DHC 8 102	2421	ALTERNATOR		BURNT	20091221006	ATL
DHC 8 102	2431	BATTERY		OVERHEATED	20090821001	ATL
DHC 8 102	2711	AILERON SPRING TAB HI L/H		WORN	20090420001	ATL
DHC 8 102	2720	FITTING ASSY - LOWER HING	85545002005	WORN	20091204010	PNR
DHC 8 102	2910	TUBE ASSY	82970410119	CHAFED	20090929008	PNR
DHC 8 102	2910	HOSE AND TUBE ASSY	DSC3461	CHAFED	20090407009	QUE
DHC 8 102	3210	ROLLER	YCRS14	SEIZED	20090604007	ATL
DHC 8 102	3230	LANDING GEAR - RELAY BASE	CL12068161	UNGLUED	20091014002	QUE
DHC 8 102	3231	LANDING GEAR DOOR		DISCONNECTED	20091223011	ATL
DHC 8 102	3232	GEAR DOOR ACTUATOR		CAME LOOSE	20091223010	ATL
DHC 8 102	3233	ACTUATOR		LEAKING	20090615006	ATL
DHC 8 102	3242	BRAKE		FIRE	20090821005	PNR
DHC 8 102	3411	PITOT PROBE	PH11001DH	POPPED	20090716003	ONT
DHC 8 102	5210	FITTING	85321414111	CRACK	20091202001	ATL
DHC 8 102	5210	FRAME ATTATCH ANGLE	85210025101102	CORRODED	20091023004	ATL
DHC 8 102	5311	LOWER FRAME STA 240 5		CRACKED	20091104001	ONT
DHC 8 102	5610	WINDSCREEN	NP15790114	SHATTERED	20091014004	ONT
DHC 8 102	5753	FASTENERS		LOOSE	20091111002	ATL
DHC 8 102	5755	SPOILER	85770013001	DELAMINATED	20090728001	ATL
DHC 8 102	5755	SPOILER ACTUATOR	A44700009	CRACKED	20090909005	ONT
DHC 8 102	5755	CASING		RUPTURED	20090406006	ATL
DHC 8 102	5755	PULLEY	82742339001	SPLIT IN HALF	20091014001	ATL
DHC 8 102	7220	UPPER FORWARD ENGINE COWL	87140002001	DENTED	20090807002	ATL
DHC 8 106	1497	BRACKET	85321951101	ARCED DAMAGE	20091005005	PNR
DHC 8 106	2000	EXCITER		FAULTY	20091007005	PNR
DHC 8 106	2497	WIRING BUNDLE		CHAFED	20091021012	PAC
DHC 8 106	2730	WASHER	CSP19277	INCORRECT ASSY	20090805002	PNR
DHC 8 106	2810	FUEL SHUT OFF VALVE		LEAKING	20091022002	PNR
DHC 8 106	2913	SEAL HYDRAULIC DRIVE	311859701	LEAKING	20090805005	PNR
DHC 8 106	3241	ANTI SKID VALVE	39671	FAILED	20090927001	PNR
DHC 8 106	5220	SEAL	85220255001	INCORRECT ASSY	20090806001	PNR
DHC 8 202	2810	FUEL STORAGE		FAULTY	20090529003	ONT
DHC 8 202	5610	WINDSHIELD	8SC0043013	SHATTERED	20090714002	QUE
DHC 8 300	2711	AILERON TRIM ACTUATOR	LA11A2118	BROKEN ARM	20090908004	ONT
DHC 8 300	2720	SWITCH	682175	SEIZED	20090416001	QUE
DHC 8 300	2800	REFUEL DEFUEL ACCESS DOOR	85410618	BROKEN	20090903002	ONT
DHC 8 300	2910	TUBE	829100100233	CRACKED	20090925001	QUE
DHC 8 300	3260	LANDING GEAR CONTROL PANEL	860TS09Y00	FAULTY	20090625002	ONT
DHC 8 300	5753	TORQUE TUBE ASSY	734386B	SHEARED	20090929002	ONT
DHC 8 301	2923	PUMP		BURNT	20091130005	ATL
DHC 8 311	1420	OVERHEAD LIGHT	7700301	SEVERELY BURNT	20091204008	QUE
DHC 8 311	2910	HYDRAULIC PRESSURE LINE	82970010477	UNSERVICEABLE	20091223014	PAC
DHC 8 311	3260	PHOTO SENSOR	SD54434	FAILED	20090904001	ATL
DHC 8 311	5610	BOLT COUNTERSUNK HEAD	NAS71036	BROKEN	20090626006	ATL
DHC 8 311	5610	WINDOW		CAUGHT FIRE	20091021016	ATL
DHC 8 311	5755	FITTING	85711566101	CRACKED	20091005008	PNR
DHC 8 314	2710	AILERON I/P QUAD SUPPORT	85711569	CRACKED	20090717002	ONT
DHC 8 314	2710	BEARING		DAMAGED	20090616010	ONT
DHC 8 400	1420	C	10962242	LOOSE	20090403008	QUE
DHC 8 400	2421	AC GENERATOR	11522185	FAULTY	20090609001	QUE
DHC 8 400	2421	AC GENERATOR	11522185	FAULTY	20090612001	QUE
DHC 8 400	2497	WIRING		CHAFED	20090928003	QUE
DHC 8 400	2810	FUEL TANK PROBE	28069109	FAULTY	20091120001	ONT
DHC 8 400	2913	ENG HYD PUMP	6617303	FAILED	20091013001	ONT
DHC 8 400	2913	ENGINE DRIVEN HYDRA PUMP	6617303	SHAFT SHEARED	20091209010	ONT

MAKE/ MODEL	JASC	PART NAME	PART No	PART CONDITION	SDR No.	RGN
DHC 8 400	3210	SOLENOID SEQUENCE VALVE	483003	FAILED	20091209009	ONT
DHC 8 400	3251	STEERING UNIT		FAILED	20091020003	QUE
DHC 8 400	7200	FADEC	8193007009	FAULTY	20090604003	QUE
DHC 8 400	7700	FADEC	8193007009	REPLACED	20091223004	ONT
DHC 8 400	7921	OIL COOLER EXIT DOOR ACT	800600M03	OVERHEATED	20090417003	ONT
DHC 8 400	7922	OIL COOLER DOOR	800600M02	FAULTY	20090610001	ONT
		ACTUATOR				
DHC 8 402	2720	RUDDER C		CHAFED	20090515004	ONT
DHC 8 402	3210	SOLENOID SE	483026	FAULTY	20090604001	QUE
DHC 8 402	3220	NLG RETRACT HYDRAULIC LIN	82910425003	PIN HOLE LEAK	20090528001	ONT
DHC 8 402	3230	SOLENOID SEQUENCE VALVE	483003	MALFUNCTIONED	20091103001	ONT
DHC 8 402	3411	PITOT STATIC PROBE	C14135DA	FAILED	20090421005	QUE
DHC 8 402	5600	LEFT MAIN WINDSHIELD	80260007	SMOKE	20090917001	QUE
DHC 8 402	5620	WINDSHIELD	80260008	SHATTERED	20090622001	ONT
DHC 8 402	7500	SWITCH OVERTEMPERATURE	8209076	CROSS THREADED	20090928007	ONT
<i>DIAMOND - AS</i>						
DA 40	2434	ALTERNATOR CB JUMPER WIRE	DA431446003	DEFECTIVE	20090525005	ONT
DA 40	3213	MAIN LANDING GEAR STRUT	D41321311501	CORRODED	20091106003	ONT
DA 40	8011	STARTER	149NLEC	BROKEN	20090901002	PNR
DA 40 F	3221	NOSE-LANDING GEAR STRUT	D4132231000	CRACKED	20091102005	ONT
DA 42	2600	FIRE DETECTOR		FALSE INDICATION	20090619009	ONT
DA 42	2810	FUEL TANK	D40281700	CONTAMINATED	20091013010	ONT
DA 42	3210	MLG BEARING HOUSING	D6032176151	CRACKED	20090924006	ONT
DA 42	3210	REAR BEARING HOUSING	D6032176151	CRACKED	20090612003	ONT
DA 42	3210	REAR BEARING HOUSING	D6032176151	CRACKED	20090616007	ONT
DA 42	3411	PITOT TUBE	PST305	BENT	20090922006	PNR
DA 42	5220	EMERGENCY HINGE RELEASE	DA452000051	INSTALL ISSUE	20091119003	ONT
DA 42	5280	R/H MLG DOOR AFT BRACKET	D6052877400	CRACKED	20090924007	ONT
<i>DIAMOND - CAN</i>						
DA 20 A1	2720	RUDDER CONTROL CABLES	SF12579	WORN	20090928014	PAC
DA 20 A1	2720	RUDDER CABLE SWAGED SLEEVE		SLIPPED	20091007006	PAC
DA 20 A1	2720	RUDDER CABLES	2027201300	NEW	20091127006	PAC
DA 20 C1	2421	MOUNTING BRACKET	2224121400	BROKEN	20090709006	PNR
DA 20 C1	2421	BRACKET ALTERNATOR	2224121400	CRACKED	20090528002	ONT
DA 20 C1	2434	BRACKET ALTERNATOR	2224121400	CRACKED	20090714003	ONT
DA 20 C1	2434	ALTERNATOR	887251	DAMAGED	20090408012	ONT
DA 20 C1	2434	BRACKET ALTERNATOR	2224121400	CRACKED	20090604006	ONT
DA 20 C1	3220	NOSE LANDING GEAR FORK	2032200800	CRACKED	20090825005	PNR
DA 20 C1	5520	ELEVATOR MASS BALANCE	2255206002	HARDWARE MISSING	20091124004	ONT
DA 20 C1	7310	FUEL DISTRIBUTION		ENGINE QUIT	20090605010	ONT
DA 20 C1	7600	INNER CABLE		BROKEN	20090401003	ATL
DA 20 C1	7600	INNER CABLE		BROKEN	20091121002	ATL
DA 20 C1	7602	ROD END	HF3M	WORN OUT	20090401002	ATL
DA 20 C1	7602	INNER CABLE		FRAYED	20091121001	ATL
DA 20 C1	7602	ROD END	HF3M	WORN - SEPARATED	20091127004	ATL
<i>DORNIER</i>						
328 100	2150	ENVIRONMENTAL CNTRL UNIT	5729C000003	REPAIRED	20090806012	PNR
328 100	2913	DC STANDBY HYD PUMP	4100849049	FAULTY	20090701002	NCR
<i>DOUGLAS</i>						
DC9	2420	FILTER BOWL		FRACTURED	20090722004	ONT
DC10 30	5343	BOLT	RA2230017	SHEARED	20090811006	PAC
<i>EMBRAER</i>						
ERJ 170 200 LR	2150	PACK NACA INLET BOOT	17055400401	WORN AND TORN	20091125008	PNR
ERJ 170 200 LR	2780	SLAT CONTROL		CRACKED	20091029004	PNR
ERJ 170 200 SU	2710	L/H AILERON TOWER SHAFT	17009777407	STIFF	20090904009	QUE
ERJ 170 200 SU	2710	AILERON CABLE	1703254100	UNALIGNED	20091021001	QUE
ERJ 170 200 SU	2750	FLAP CONTROL		FAILED	20091116004	QUE
ERJ 170 200 SU	2780	SLAT CONTROL		FAILED	20091210003	QUE
ERJ 170 200 SU	2780	SLAT CONTROL		FAILED	20091210005	QUE
ERJ 170 200 SU	3610	WIRING HARNESS	170166603001	BURNT	20091021004	QUE
ERJ 170 200 SU	5210	GIRT BAR		FAULTY	20090908007	QUE
ERJ 170 200 SU	5210	FLEXBALL CABLE	72CF10230	BROKEN	20090625005	QUE
ERJ 170 200 SU	5280	NLG DOOR LINK - R/H AFT	17070760903	GOOD	20091214002	QUE
ERJ 190 100 IGW	1210	REFUEL NOZZLE	17009961403	BAFFLE ADRIFT	20091223013	QUE
ERJ 190 100 IGW	2330	SVDU	179000201	UNSERVICEABLE	20090910009	QUE
ERJ 190 100 IGW	2565	SLIDE	1040031	FAILED	20090504004	QUE
ERJ 190 100 IGW	2612	FIRE DETECTION		DISBONDED	20091116010	QUE
ERJ 190 100 IGW	2612	STRUCTURE		ADRIFT	20091028002	QUE
ERJ 190 100 IGW	2612	STRUCTURE		ADRIFT	20091028003	QUE
ERJ 190 100 IGW	2750	FLAP CONTROL		FAILURE WARNING	20090904003	QUE

MAKE/ MODEL	JASC	PART NAME	PART No	PART CONDITION	SDR No.	RGN
ERJ 190 100 IGW	2750	FLAP CONTROL		FAILED	20091202006	QUE
ERJ 190 100 IGW	2750	FLAP CONTROL		FAILED	20091202007	QUE
ERJ 190 100 IGW	2750	FLAPS OPERATING RODS	1909238590	BENT	20091112001	QUE
ERJ 190 100 IGW	2752	ACTUATOR		FAILED	20091116005	QUE
ERJ 190 100 IGW	2780	SLAT CONTROL		FAILURE WARNING	20090904005	QUE
ERJ 190 100 IGW	2780	SLAT CONTROL		FAILED	20091126004	QUE
ERJ 190 100 IGW	2780	SLAT CONTROL		FAILED	20091210006	QUE
ERJ 190 100 IGW	2782	SLAT ACTUATOR		FAULTY	20090904004	QUE
ERJ 190 100 IGW	2782	SLAT ACTUATOR	1703909	FAILED	20090813003	QUE
ERJ 190 100 IGW	2782	SLAT ACTUATOR	1703909	FAILED	20090904002	QUE
ERJ 190 100 IGW	2782	ACTUATOR		FAILED	20091116003	QUE
ERJ 190 100 IGW	2782	SLAT ACTUATOR		FAILED	20091126003	QUE
ERJ 190 100 IGW	2810	REFUEL DIFUSER	17009961403	DAMAGED	20091118011	QUE
ERJ 190 100 IGW	3210	BEARING DUST SEAL		MISSING	20090813005	QUE
ERJ 190 100 IGW	3211	MLG RETRACT ACTUATOR PIN	2822A0000	CORRODED	20090921003	QUE
ERJ 190 100 IGW	3211	RETRACT ACTUATOR ATT LUG	2822A000003	CORRODED	20090916002	QUE
ERJ 190 100 IGW	3230	LANDING GEAR		NO GREASE	20090813001	QUE
ERJ 190 100 IGW	3230	LANDING GEAR		FAULTY	20090813002	QUE
ERJ 190 100 IGW	3230	LANDING GEAR		WRONG WARNING MESSAGE	20091119001	QUE
ERJ 190 100 IGW	3230	LANDING GEAR		NOT EXTENDED	20091202005	QUE
ERJ 190 100 IGW	3231	NLG DOOR LINK - R/H	17070760903	GOOD	20090610004	QUE
ERJ 190 100 IGW	3242	BRAKE	90002340PR	FAILED	20090428002	QUE
ERJ 190 100 IGW	3246	WHEEL		SEIZED	20090417007	QUE
ERJ 190 100 IGW	3250	LANDING GEAR		FAULT	20091202003	QUE
ERJ 190 100 IGW	3251	STEERING UNIT		FAIL MESH	20091116002	QUE
ERJ 190 100 IGW	5320	SEAL REST	17067467001	CORRODED	20090813012	QUE
ERJ 190 100 IGW	5544	COUNTER BALANCE WEIGHT		CORRODED	20090629002	QUE
ERJ 190 100 IGW	5554	BEARING	DSRP8FS464	AXIAL PLAY	20090826001	QUE
EUROCOPTER DEUT						
BK117 A 1D	6410	TAIL ROTOR BLADES (QTY 2)	117317411	USED/REMOVED	20091228002	PNR
BK117 B 2D	6320	GEARBOX		FAULTY	20091124001	PNR
BK117 B 2D	6320	MAIN TRANSMISSION	1171200501	DEBRIS	20091124002	PNR
BO105 S CDN BS 4	2911	HYDRAULIC TUBE	112145174	UNSERVICEABLE	20090407014	ONT
BO105 S CDN BS 4	3340	LENS	1110001	SPALLED	20090421006	ONT
BO105 S CDN BS 4	5302	TAILBOOM	BO105	DISTORTED	20090508003	ONT
BO105 S CDN BS 4	7310	FUEL CHECK VALVE	6895171	INCORRECT ASSY	20090706001	ONT
EUROCOPTER FRANCE						
AS 332L1	6220	MR/H FLAPPING HINGE PIN SP	332A311401M	FAILED	20090522005	PAC
AS 355	5531	LOWER VERTICAL FIN	350A0855061601	CRACKED	20090402011	ONT
AS 355	6220	YOKE	350A371162	CRACKED	20090908010	PAC
AS 355	6320	MAST CHIP PLUG		OVERHEATED	20090505008	ONT
EC 120 B	0	BLANKING PLATE	NPN	INSTALLED	20090818004	PAC
EC 120 B	2460	BATTERY/EPU SWITCH	045004A102A	INTERMITTANT	20090417006	PAC
EC 120 B	3340	RELAY LANDING LIGHT	M610619017	INTERMITTANT	20090417005	PAC
EC 120 B	5301	CAROUSEL SWITCH	83450001	NEW	20090702005	PNR
EC 120 B	5301	CAROUSEL SWITCH	83450001	NEW	20090702007	PNR
EC 120 B	6230	BOLT	DHS4111012118	BROKEN	20090623007	PNR
EC 120 B	6730	ELECTRO VALVE	EVP310	FAILED	20090918001	PNR
EC 120 B	6730	SERVO CONTROL	SC50911	HARD OVER	20090812008	ONT
EC 130 B4	3210	CLAMP	ASNA0033097	FRACTURED	20090716004	ONT
EC 130 B4	5301	CAROUSEL SWITCH	83450001	NEW	20090702006	PNR
EC 130 B4	6297	ELEC CONNECTOR	E0052R14B19SNF	REPAIRED	20090716005	ONT
FAIRCHILD						
SA227AC	0	GEAR HANDLE	2781014009	NOT SECURE	20090928008	ONT
SA227AC	0	OB FLAP	2736000007	MISRIGGED	20090928012	ONT
SA227AC	2100	COOLING TURBINE	20475546	NEW	20090506001	ONT
SA227AC	2133	REGULATOR	38E852B	REPLACED	20091211008	ONT
SA227AC	2150	COOLING TURBINE	20475546	SEIZED	20090806006	ONT
SA227AC	2400	BUS TIE SWITCH	AN32302	INTERNALLY BURN	20091211010	ONT
SA227AC	2400	CURRENT LIMITER	ANL225	OVERHEATED	20091030006	PNR
SA227AC	2900	HYD LINE	2781006019	CRACKED	20090828005	ONT
SA227AC	2914	O RING	MS287786	SPLIT	20090407006	ONT
SA227AC	3200	LANDING GEAR		LOW ACCUMULATOR	20091216009	ONT
SA227AC	3230	GEAR CONTROL VALVE	246005	STICKY	20090806007	ONT
SA227AC	3230	SWITCH	1EN516	INTERMITTENT	20091005003	ONT
SA227AC	3250	ARMING VALVE	350501	NOT OPENING	20090519007	PNR
SA227AC	5610	WINDSHIELD	2719442004	SHATTERED	20091113011	ONT
SA227AC	5610	WINDSHIELD HEATED	2719442003	CRACKED	20091229001	PNR
SA227AC	7200	TPE33111U		ENGINE QUIT	20090512003	ONT
SA227AC	7297	WIRE	19002716S	BURNED	20090715001	ONT
SA227AC	7500	BLEED AIR SYSTEM		SMOKE	20090928009	ONT
SA227AC	7730	AUTO IGNITION SWITCH	31057463	CRACKED	20090828003	ONT
SA227CC	3233	LANDING GEAR	2751500001	WORN	20090522004	ONT

MAKE/ MODEL	JASC	PART NAME	PART No	PART CONDITION	SDR No.	RGN
SA227DC	2752	FLAP ACTUATOR	2736053003	LEAKING	20090629007	ONT
SA227DC	2900	HYDRAULIC BYPAS LINE	27810322511	CHAFED	20091110011	PNR
SA227DC	3222	LG STRUT	2752505	CRACKED	20090610003	PNR
SA227DC	5610	HEATED WINDSHIELD - R/H	2719442002	CRACKED	20091216010	ONT
SA227DC	7997	OIL TEMP BULB	52986	INACCURATE	20090928013	ONT
<i>FOUND BROTHER</i>						
FBA 2C1	3213	SHOCK ABSORBER TIE BOLT	U320	USED	20090403011	ONT
FBA 2C1	3246	FLOAT TIE WIRE LUG		BROKEN	20090925004	ONT
<i>GROB-WERKE</i>						
G 120A	2120	AIR DIST		BURNING SMELL	20091103007	PAC
G 120A	2421	RING TERMINAL	33466	ORIGINAL	20090902005	PAC
G 120A	3260	LG WARNING		FAULTY	20090922003	PAC
G 120A	3430	LANDING AIDS		BURNING SMELL	20090819005	PAC
G 120A	3430	TAXI LIGHT HARNESS	AWG20	OVERHEATED	20090819004	PNR
G 120A	5730	WING		DENTED	20091022006	PAC
G 120A	7410	IGNITION/START SWITCH	103572101	SHORTED	20090909006	PAC
<i>GULFSTREAM - ISRAEL</i>						
GULFSTREAM 200	2600	FIRE DETECTOR LOOP		UNSERVICEABLE	20090724004	ONT
GULFSTREAM 200	2721	TRIM TAB ROD LOWER	4A5820103501	UNSERVICEABLE	20091008005	ONT
GULFSTREAM 200	2780	SLAT CONTROL		FAILED	20090727004	ONT
GULFSTREAM 200	2797	GROUND TERMINAL BLOCK		BROKEN	20090601002	ONT
GULFSTREAM 200	5610	TERMINAL END	MS20659130	ARCED	20090715002	ONT
GULFSTREAM G150	2752	MOTOR DC	5503D1003	SHORTED TO CASE	20090501002	PNR
<i>GULFSTREAM - USA</i>						
690C	3213	NLG RETRACT PISTON	ED10145	CRACKED	20091215006	PNR
<i>HAWKER SIDDELEY-UK</i>						
HS 748 2A	3260	BOLT	1000021303	BROKEN	20090605009	ONT
HS 748 2A	7921	OIL COOLER	RK35782A	LEAKING	20090519009	QUE
<i>HUGHES</i>						
369D	6220	LOWER MR PITCH LINK BRG	369T795111	BEARING SEIZED	20090402007	PAC
<i>ISRAELI INDUSTRIES</i>						
1124	2900	HYDRAULIC POWER		LEAKING	20090810001	ONT
<i>KAMOV</i>						
KA32A11BC	6500	ROTOR		FAULTY	20090408013	PAC
<i>LEARJET</i>						
31A	3230	UPLOCK SWITCH	1EN18	UNSERVICEABLE	20090519006	PAC
35A	2900	FITTING NUT	AN622896D	CRACKED	20091006001	NCR
35A	3234	HYDRAULIC SOLENOID VALVE	48C48641	FAULTY	20090918002	ONT
35A	5330	PLATE/SKIN		CRACKED	20091123005	ONT
36A	2900	HOSE	2307006101	LOOSE	20091123001	ONT
45	2820	FUEL LINE	53A1101101	ORIGINAL	20090717003	ONT
45	2820	FUEL FEEDER LINE	244224151	LEAKING	20090514003	PAC
45	3010	H STAB FLEXIBLE L/H	66301000007007	CRACKED	20090414004	QUE
45	3010	H-STAB FLEXIBLE L/H	66301000007	FLEXIBLE PORTION	20090414002	QUE
45	3222	AXLE BEAM ASSY	2000203001	NEW	20090717005	ONT
45	3340	LIGHTING		BURNT	20090714004	PAC
45	5330	SKIN		CRACKED	20090918012	PNR
55	5720	DOOR ASSY	28260461	ORIGINAL	20091223003	ONT
60	3233	NOSE GEAR ACTUATOR		LEAKING	20091202013	ONT
60	7830	INBOARD BRACKET	266000325	CRACKED	20090723005	QUE
60	7830	OUTBOARD BRACKET	266000325	CRACKED	20090723004	QUE
<i>LOCKHEED</i>						
382G	1420	ELECTRICAL CONNECTORS		FAULTY	20090727002	ONT
382G	3210	FS 517 BEAM R/H	331386961	CRACKED	20091007007	ONT
382G	7120	ENGINE MOUNT		CORRODED	20090513003	ONT
<i>MITSUBISHI - USA</i>						
MU 2B60	3231	GEAR DOOR ACTUATOR/ MOTOR	AA5C	INTERMITTENT	20091006002	ONT
MU 2B60	5280	HINGE	030A35508	CRACKED	20090424003	ONT
<i>MOONEY</i>						
M20E	7600	SWITCH	V31	UNSERVICEABLE	20090813008	PNR
<i>MORAVAN</i>						
Z242L	2720	RUDDER CABLE	Z14242260100	FRAYED	20090807001	ONT
Z242L	2720	RUDDER CABLE	Z14242260100	FRAYED	20090626002	ONT
Z242L	2730	FWD ELEVATOR TRIM CABLE	Z14244130000	FRAYED	20090508002	ONT
Z242L	2731	AFT ELEVATOR TRIM CABLE	Z4244120000	FRAYED	20090421003	ONT
Z242L	2731	AFT ELEVATOR TRIM CABLE	Z4244120000	INCORRECT ASSY	20090421004	ONT
Z242L	2731	AFT ELEVATOR TRIM CABLE	Z4244120000	INCORRECT ASSY	20090608004	ONT
Z242L	2731	FWD ELEVATOR TRIM CABLE	Z14244130000	FRAYED	20090605001	ONT
Z242L	2750	FLAP CENTRE CABLE	Z4243130000	FRAYED	20090626001	ONT
Z242L	7120	ENGINE MOUNT	L24263100000	CRACKED	20090430002	ONT
Z242L	2720	RUDDER CABLE	Z14242260100	FRAYED	20091001002	ONT

MAKE/ MODEL	JASC	PART NAME	PART No	PART CONDITION	SDR No.	RGN
Z242L	2731	FWD ELEVATOR TRIM CABLE	Z14244130000	FRAYED	20091001001	ONT
Z242L	3240	BRAKE LINE	Z4253100700	BROKEN	20091127001	ONT
Z242L	3246	WHEEL RIM	K2231007	CRACKED	20091028006	ONT
Z242L	3250	STEER SPRING	Z4242170001	BROKEN	20091112003	ONT
Z242L	3250	STEERING CABLE	E24242370000	FRAYED	20091210007	ONT
<i>PILATUS - SW</i>						
PC 12 45	2100	TURBINE (COOLING)	1677D000002	SEIZED	20090423007	ONT
PC 12 45	2133	SAFETY VALVE	1037842	FAULTY	20090415004	ONT
PC 12 45	2210	AUTOPILOT		FAULTY	20090415002	ONT
PC 12 45	2711	ACTUATOR	978731813	SEPARATED	20090415005	ONT
PC 12 45	2932	HYDRAULIC PRESSURE SWITCH	9738114304	LEAKING FLUID	20090526002	ONT
PC 12 45	3020	INTAKE DEICE LIP	5302412140	CRACKED	20091118008	ONT
PC 12 45	3040	WIRE	H254A10H301A10	BURNT	20090618003	ONT
PC 12 45	3060	S	PACER	MISSING	20090402001	ONT
PC 12 45	3400	AHRU LCR-92	1242102011	INTERMITTENT	20091130002	ONT
PC 12 45	3414	AIRSPED INDICATOR	965121333	FAULTY	20090415003	ONT
PC 12 45	5543	AFT TRIM STRIP	5554012038	CRACK	20091216007	ONT
PC 12 45	5610	WINDOW	9598110111	CRACKED	20091118007	ONT
PC 12 45	5751	SCREWS	MS35207XXX	CORRODED	20090415001	ONT
PC 12 45	5751	SCREWS	MS35207XXX	CORRODED	20090423006	ONT
PC 12 47E	2460	BUS TIE RELAY CONTROLLER		FAILED	20090922001	ONT
PC 12 47E	2460	BUSS TIE RELAY ASSY	974033813	FAILED	20090616008	ONT
PC 12 47E	3200	HYD POWER	9603101154	NOT WORKING	20090609006	ONT
PC 12 47E	3231	LANDING GEAR DOOR		LOOSE	20091209008	ONT
PC 12 47E	3400	CONNECTOR OF PWR SUPPLY		FAILED	20090501001	ONT
PC 12 47E	3400	MFD C	71015980301	FAILED	20090511010	ONT
PC 12 47E	5210	SHOOT PIN BOLT	NAS660311	NOT SECURED	20090805001	ONT
<i>PIPER</i>						
PA18 150	2710	AILERON CNTL		FRAYED	20091105002	ONT
PA23 160	5530	BRACKET REINFORCEMENT	2854002	CRACKED	20090826008	ONT
PA23 250	2700	CABLE ASSY-STABILATOR	3318600	BROKEN	20090903001	ONT
PA23 250	2750	BELLCRANK	16423006	CRACKED	20090511011	QUE
PA23 250	5311	RD STEEL TUBE	1713444	CORRODED	20090616012	PAC
PA24 250	2740	STABILATOR HORN	2039700	CRACKED	20091109003	ONT
PA24 250	3210	CONDUIT	455180	WORN	20091117001	ONT
PA28 140	2720	STEERING HORN	63300014	BROKEN	20090916004	PNR
PA28 140	7600	KNOB THROTTLE LEVER	6697900	SEPARATION	20091127007	PAC
PA28 151	3210	BOLT	AN411A	BROKEN	20090811005	ONT
PA28R 201	3260	ACTUATOR	JE6	BROKEN	20090710001	PNR
PA31	2913	PUMP	1213HBG310	BROKEN KEY	20091223012	QUE
PA31	3230	LANDING GEAR		FAULTY	20090728013	QUE
PA31 350	2432	WIRE ASSY	71644004	BROKEN	20090811007	PAC
PA31 350	2730	RHEO SHAFT	40958000	GOOD	20091123002	PNR
PA31 350	2912	FILTER HOUSING		SPLIT	20091210010	PAC
PA31 350	3210	DRAG BRACE LEG	40336000	FAILED	20090617001	PNR
PA31 350	3210	BRACKET	40616002	CRACKED	20091008003	PAC
PA31 350	3244	TUBE	G156006	FAILED	20090917005	PNR
PA31 350	3244	NOSE WHEEL ASSYMBLY	40140	FLAT	20090406002	ATL
PA31 350	3244	WHEEL ASSY	40140	FLAT	20090406003	ATL
PA31 350	3246	MLG FORK	44504006	GOUGED	20091217008	PAC
PA31 350	5210	UPPER DOOR FRAME GSSET	5237600	CRACKED	20090616006	PNR
PA31 350	5230	DOOR HINGE		SEPARATED	20090616005	PNR
PA31 350	5280	ELBOW - 45 DEGREE	AN8374D	SEVERED	20090523001	PAC
PA31 350	5711	WING AFT SPAR		IN SERVICE	20090626004	PNR
PA31P	2731	ELEVATOR CONTROL		INCORRECT ASSY	20091210009	PNR
PA31T2	2912	HYD FILTER BOWL		CRACKED	20091211004	ONT
PA31T2	3210	HOUSING ASSY	45316003	CRACKED	20091118015	ONT
PA32 260	2842	SENDER	6810102	FAILED	20091102001	PNR
PA34 200	3246	BOLT	AN536A	SHEARED HEAD	20091008002	PNR
PA34 200	3260	LG WARNING		CHAFED WIRE	20090504006	PNR
PA34 200T	2421	ALTERNATOR	ALX9525B	QUIT	20091203005	PNR
PA34 200T	2421	COUPLING	635796	FAILED	20091027003	QUE
PA44 180	2720	AFT RUDDER C	62701154	FRAYED	20090519001	ONT
PA44 180	2720	AFT RUDDER C	62701154	FRAYED	20090519002	ONT
PA44 180	2720	TURNBUCKLE		LOOSE	20091110005	PNR
PA44 180	3210	AFT TRUNION BOLT	761891AN440A	CORRODED BENT	20091005013	ATL
PA44 180	3220	TRUNNION	67054003	CRACKED	20090921002	PNR
PA44 180	3221	BRACKET	8628210	CRACKED	20090911013	ATL
PA44 180	7310	FUEL REGULATOR VALVE	23D04	FUEL LEAKAGE	20091211009	PNR
PA44 180	7322	CARB HEAT CONTROL CABLE	554294	FRAYED	20090805003	ONT
PA46 310P	5751	AILERON HINGE BRACKET	8320302	LOOSE AT RIVETS	20090505001	ONT
PA60 600	3210	DIODE		DOOR	20090724003	PAC
PA60 600	5347	SEAT ASSY		BROKEN	20090901009	PAC
<i>PITTS</i>						
S 2C	2720	TUBE DIAGONAL L/H	22100241	DAMAGED	20090515001	PNR

MAKE/ MODEL	JASC	PART NAME	PART No	PART CONDITION	SDR No.	RGN
S 2C	5751	AILERON		FAULTY	20090515002	PNR
<i>REPUBLIC</i>						
RC 3	2841	FUEL PRESS INDICATOR	1022203	NEW	20090707004	QUE
<i>ROBINSON</i>						
R22 BETA	6700	JACKSHAFT	A3371	CRACKED	20091106001	PNR
R22 BETA	7414	MAGNETO		FAULTY	20091208006	ONT
R44	2410	ALTERNATOR	ALX8521R	FAILED	20090519010	PNR
R44	2435	ENGINE STARTER	BC3151002	FAILED	20090422009	PNR
R44	2435	GENERATOR		FAULTY	20090513005	PNR
R44	2916	RESERVOIR	D2111	VENTING OUT	20091013009	PNR
R44	6310	CLUTCH ASSY	C0183	WORN	20090901012	PNR
R44	6310	CLUTCH	C0183	WORN	20091217005	PNR
R44	6730	HYDRAULIC SERVO	D2121	LEAKING	20090619004	PNR
R44	7414	MAGNETO	IO600646201	FAULTY	20091202014	PNR
R44 II	2100	AIR CONDITIONING	D7831	RUPTURED	20090911003	PNR
R44 II	2420	ALTERNATOR	ALU85	FAULTY	20090727007	PNR
R44 II	2421	ALTERNATOR	ALU8521R	FAULTY	20090908001	PNR
R44 II	2421	ALTERNATOR	ALU8521R	FAULTY	20090705002	PNR
R44 II	2435	STARTER	14924HT	FAULTY	20090914009	PNR
R44 II	2435	STARTER	14924HTH	INTERMITTENT	20090901010	PNR
R44 II	2435	STARTER	14924HTH	INTERMITTENT	20090908002	PNR
R44 II	2435	STARTER	BC3151004	FAULTY	20090720004	PNR
R44 II	2435	STARTER	F4C180901	FAILED	20090727001	PNR
R44 II	2435	STARTER GENERATOR		FAULTY	20090831003	PNR
R44 II	2435	STARTER		LEAKING	20090525004	PNR
R44 II	2435	STARTER	14924HTH	BROKEN	20090506004	PNR
R44 II	2435	STARTER	14924HTH	BROKEN	20090511005	PNR
R44 II	2435	STARTER	14924HTH	FAULTY	20090617006	PNR
R44 II	2435	STARTER	BC3151003	BROKEN	20090508006	PNR
R44 II	2435	STARTER	BC3151004	WORN	20090511004	PNR
R44 II	2435	STARTER	BC3151004	BROKEN	20090617005	PNR
R44 II	2435	STARTER		CRACKED	20091028011	PNR
R44 II	2435	STARTER	14924HTH	WOULDN'T ENGAGE	20091202008	PNR
R44 II	2822	FUEL PUMP	AA21961	LEAKING	20090727003	PNR
R44 II	2822	PUMP		UNSERVICEABLE	20090421012	PNR
R44 II	2822	PUMP	A8187B	DEFECTIVE	20090506002	PNR
R44 II	2822	BOOST PUMP		NOISY	20091209011	PNR
R44 II	2822	FUEL PUMP	LW15473	LEAKING	20091008001	PNR
R44 II	2913	HYDRAULIC PUMP	D5001	LEAKING	20091202009	PNR
R44 II	2915	PRESSURE RELIEF VALVE		FAILED	20090515003	PAC
R44 II	2916	SIGHT GLASS	B5633	FALSE INDICATION	20091229002	PAC
R44 II	3340	STROBE LENS	A70811	MISSING	20090826014	PNR
R44 II	6310	CLUTCH ACTUATOR	C0512	FAULTY	20090717008	PNR
R44 II	6310	CLUTCH ASSY	C0183	FAULTY	20090826012	PNR
R44 II	6310	CLUTCH ASSY	C0183	WORN	20090901011	PNR
R44 II	6310	CLUTCH ACTUATOR	C0512	FAILED	20090506003	PNR
R44 II	6310	CLUTCH ACTUATOR	C0512	FAILED	20090605003	PNR
R44 II	6310	COUPLING		FAULTY	20090605007	PNR
R44 II	6310	CLUTCH	C0183	WORN	20091217003	PNR
R44 II	6310	CLUTCH	C0183	WORN	20091217004	PNR
R44 II	6310	COUPLING		DEFECTIVE	20091116008	PNR
R44 II	6310	SPRAG CLUTCH	C1883	UNSERVICEABLE	20091026003	PAC
R44 II	6510	TAIL ROTOR DRIVESHAFT	D1961	NO LUBRICATION	20090605008	PNR
R44 II	6520	T/R GEARBOX	C0211	FAULTY	20090714009	PNR
R44 II	6720	PITCH CHANGE BEARING	C0311	DAMAGED	20090511012	PNR
R44 II	6730	HYDRAULIC SERVO	5773	LEAKING	20090422008	PNR
R44 II	7300	ENGINE GOVERNOR MOTOR	B2475	INTERMITTENT	20090605005	PNR
R44 II	7314	AUX FUEL PUMP	130762	FAULTY	20090826007	PNR
R44 II	7314	AUX FUEL PUMP	C8187B	FAULTY	20090814002	PNR
R44 II	7314	FUEL PUMP	D8187B	NOISY	20090928011	PNR
R44 II	7314	FUEL PUMP	LW15473	LEAKING	20090831005	PNR
R44 II	7314	FUEL PUMP		LEAKING	20090602004	PNR
R44 II	7314	FUEL PUMP	D8187B	INTERMITTENT	20090511006	PNR
R44 II	7397	VACUUM SWITCH		FAULTY	20090525002	PNR
R44 II	7414	MAGNETO		CHAFED	20090721005	PNR
R44 II	7414	MAGNETO	10600646201	FAULTY	20090702015	PNR
R44 II	7414	MAGNETO	10600646201	FAULTY	20090709001	PNR
R44 II	7414	MAGNETO	10600646201	CHAFED	20090715006	PNR
R44 II	7414	MAGNETO	BL6006169	FAULTY	20090806003	PNR
R44 II	7414	MAGNETO	E05EA102	CHAFED	20090729001	PNR
R44 II	7414	MAGNETO	106006169	FAILED	20090705001	PNR
R44 II	7414	MAGNETO		FAILED	20090421013	PNR
R44 II	7414	MAGNETO	BL60064620	DEFECTIVE	20090506005	PNR
R44 II	7714	GOVERNOR C	D2782	FAULTY	20090602005	PNR
R44 II	8012	VALVE	D3211	CONTAMINATED	20090602007	PNR
R44 II	8570	COOLING UNIT		WORN	20090602006	PNR
<i>ROCKWELL</i>						

MAKE/ MODEL	JASC	PART NAME	PART No	PART CONDITION	SDR No.	RGN
690A	5610	R/H WINDSHIELD HEATED		SHATTERED	20090910010	PAC
700	2370	POWER SUPPLY INPUT PCBA	7250116006	TRACES OF FUMES	20090504002	PNR
<i>SAB</i>						
340B	2900	HYDRAULIC HOSE	9302631001	BURST	20090807005	PNR
340B	3240	SWIVEL ELBOW	AIR124470	UNSERVICEABLE	20090603005	PNR
<i>SCHWEIZER</i>						
269C 1	6220	FLAPPING HINGE BEARING	269A505071	CRACKED	20091206004	PAC
269C 1	6220	FLAPPING HINGE BEARING	269A505071	CRACKED	20091206005	PAC
269C 1	6310	DRIVE BELT	269A5512	DELAMINATING	20090609008	PAC
269C 1	8530	EXHAUST VALVE		STUCK	20090609007	PAC
<i>SIKORSKY</i>						
S61	6320	RING GEAR	S613522017003	CRACKED	20091102004	ONT
S61N	6320	RING GEAR	S6113522017003	CRACKED	20091106002	PAC
S61N	6730	AUX SERVO	S61656150061	INOPERATIVE	20090824005	PAC
S76	6320	UPPER HOUSING	7635109002055	NEW	20091214007	PAC
S76	7120	TRI POD	7630907017044	CRACKED	20090521003	PAC
S76	7120	TRI POD	7630907017044	UNSERVICEABLE	20090522002	PAC
S76A	6420	BEAM PITCH CHANGE	7610305001101	CRACKED	20090901001	QUE
S76A	7311	GASKET OIL COOLER	A5F224000	UNSERVICEABLE	20090420005	PAC
S76C	6320	UPPER HOUSING	7635109002053	UNSERVICEABLE	20090529006	PAC
S76C	6320	UPPER HOUSING	7635109002055	NEW	20091113006	PAC
S76C	7921	BLOWER DRIVE SHAFT	763510904104	NEW	20091113010	PAC
S92A	6320	MAIN GEARBOX	9235115100043	CRACKED	20091103002	ATL
<i>STINSON</i>						
108 2	5311	FUSELAGE TUBING		RUSTY	20091113001	ONT
<i>SWEARINGEN</i>						
SA226TC	2430	GENERATOR RELAY	6041H205A	FAILED	20091202011	PAC
SA226TC	2435	BEARING	M2040AC2	FAILED	20091113005	PNR
SA226TC	2730	SAS SERVO	950D1001F	CONTAMINATED	20090904008	PAC
SA226TC	2900	HYDRAULIC LINE	2781006307	CRACKED	20090702009	PNR
SA226TC	2900	HYDRAULIC TUBE	2781006089	CHAFED	20090925005	PNR
SA226TC	2910	HYDRAULIC LINE	2781006003	CRACKED	20091117006	PNR
SA226TC	3000	REGULATING VALVE	39290811	LEAKING	20090727008	PNR
SA226TC	3221	TRUNNION	5451001001	CORRODED	20091125007	PAC
SA226TC	3230	HYDRAULIC HOSE	SS1008F000E2	RUPTURED	20090918004	PNR
SA226TC	3230	STOP	2754000169	BROKEN	20091118009	PNR
SA226TC	3250	POTENTIOMETER	78SF2B502	SHAFT BROKEN	20090821006	PNR
SA226TC	3250	SWITCH NWS	C1006	FAILED	20090918011	PNR
SA226TC	3260	MICRO SWITCH	1EN516	FAILED	20090811004	PNR
SA226TC	3260	MICRO SWITCH	MS243314	FAILED	20091210008	PNR
SA226TC	5411	CAP KEELSON	2735004002	CRACKED	20090904007	PAC
SA226TC	5414	WIRE 4 GAUGE		CHAFED	20090904006	PAC
SA226TC	5512	SKIN L/H	2741000103	CRACKED	20090813011	PNR
SA226TC	5610	HEATED WINDSHIELD CAPTAIN	2719442003	CRACKED	20091222006	PNR
SA226TC	5610	WINDSHIELD HEATED	2719442004	CRACKED	20091015006	PNR
SA226TC	5610	WINDSHIELD HEATED CAPTAIN	2719442003	CRACKED	20091222007	PNR
SA226TC	5700	LEADING EDGE	2731000798	CRACKED	20090728014	PAC
SA226TC	7300	ENGINE CONTROL CABLE	C8102419	BROKEN	20090702008	PNR
<i>WAGAERO</i>						
CUBY ACRO TRAINER	3210	LANDING GEAR AXLE		BROKEN	20090407005	ONT
ENGINE						
<i>ALLISON</i>						
250-C20	7320	FUEL CONTROL UNIT	23070606	FAULTY	20090914007	PNR
250-C20	7532	BLEED VALVE	23053176	STUCK	20090914008	PNR
250-C20B	7240	COMBUSTIBLE CASE OUTER	6870992H	CRACKED	20091082010	PAC
250-C20B	7240	COMBUSTION LINER	23056108	BENT	20091110001	PNR
250-C20B	7250	3RD STAGE TURBINE WHEEL	23065833	SCRAP	20091211003	PNR
250-C20B	7321	FUEL CONTROL UNIT	23070606	FAULTY	20090928010	PNR
250-C20B	7323	GOVERNOR	6896313A	INTERMITTENT	20090529002	PNR
250-C20B	7510	ANTI-ICE GUIDE ASSY	6856983	BROKEN PIPE	20091016003	ATL
250-C20B	7530	PRESSURE PROBE	23073525	NEW	20090401005	QUE
250-C20F	8310	ENGINE TO CGB DRIVE SHAFT	355A35204302	SHEARED	20091221004	QUE
250-C20R	7210	BEARING	23034787	UNSERVICEABLE	20091103006	ATL
250-C20R	7210	BEARING	23031497	WORN	20091008004	ATL
250-C20R	7250	NUMBER 5 BEARING	6871505	MISSING BALLS	20090512002	ATL
250-C20R	8300	BALL BEARING	23031497	SPALLING	20090902006	ATL
250-C20R	8300	BALL BEARING	23031497	SPALLING	20090902007	ATL
250-C20R/2	7722	T O T INDICATOR	12444420SN8	OVERHAULED	20091109007	ATL
250-C30S	7250	GP BEARING THRUST PLATE	23058137	OVERHAULED	20091116009	PNR
250-C47B	7250	TURBINE		RUB NOISE	20091002002	PNR

MAKE/ MODEL	JASC	PART NAME	PART No	PART CONDITION	SDR No.	RGN
250-C47B	7300	HMU		LEAKING	20090407007	QUE
501-D13	6123	PROPELLER FEATHERING		FAULTY	20090727011	PNR
501-D13	7200	ENGINE		FAULTY	20090727010	PNR
501-D13	7200	ENGINE		LEAKING	20090904012	PNR
501-D13	7200	ENGINE		FLUCTUATING	20090615008	PNR
501-D13D	7200	ENGINE	501D13	FAILED	20090807009	PAC
501-D13D	7230	ENGINE		OVERHEATED	20090713004	PAC
501-D13D	7321	TD AMPLIFIER	4002603	FAULTY	20090722005	PAC
<i>AVCO LYCOMING</i>						
AEIO-360-A1B6	8520	CAM SHAFT		BROKEN	20090916006	ONT
AEIO-360-A1B6	8520	ENGINE	AEIO360A1B6	CRACKED	20090611005	ONT
AEIO-540-D4D5	7313	INJECTOR FUEL	25766081	WEeping FUEL	20091123004	PAC
AEIO-540-D4D5	7313	NOZZLE		LOOSE	20091207001	PAC
AEIO-540-D4D5	7421	SPARK PLUG		FOULED	20091105004	PAC
AEIO-540-D4D5	8520	ENGINE POWER		STICKING	20091127003	PAC
ALF-502L-2C	7280	ENGINE	ALF5022C	SEIZED	20091009002	QUE
IO-360-A2A	8530	CYLINDER HEAD	AEL850991R	SEPERATED	20090812009	PAC
IO-360-B1B	8530	CYLINDER	SL36006WA1	CRACKED	20090918005	PNR
IO-360-L2A	8000	STARTER RING GEAR	72566	FAILED/FRACTURED	20091126005	PNR
IO-540-AE1A5	2822	AUX FUEL PUMP	D8187B	INTERNAL SHORTED	20091122001	PNR
IO-540-AE1A5	7414	MAGNETO	106006169	SHORTED	20090818001	PNR
IO-540-AE1A5	7414	MAGNETO	106006169	FAILED	20090916005	PNR
IO-540-AE1A5	7414	MAGNETO	BL600646201	FAULTY	20090602003	PNR
IO-540-AE1A5	7414	MAGNETO	1060064620	CHAFED	20091030005	PNR
IO-540-AE1A5	7414	MAGNETO	BL6006189	LEAKING	20091118014	PNR
IO-540-AE1A5	7414	MAGNETO	IO6006169	WORN	20091014003	PNR
IO-540-AE1A5	8011	BENDIX GEAR	BC3151004	SHEARED	20090803001	PNR
IO-540-AE1A5	8011	STARTER	14924HTT	INTERNAL DAMAGE	20090824007	PNR
IO-540-AE1A5	8011	STARTER	14924HTH	INTERNAL DAMAGE	20091115001	PNR
IO-540-AE1A5	8510	BOLT	LW31H088	DEBRIS	20091027010	PAC
IO-540-K1B5	8530	CONNECTING ROD	LW19332	FRACTURED	20090429004	ATL
IO-540-K1J5	7320	FUEL INJECTOR SERVO	25244919	STICKING THROTTLE	20090826011	PAC
LO-360-E1A6D	8520	CRANKCASE	0360E1A6D	CRACKED	20091030003	PAC
LTIO-540-J2B	8550	OIL FILTER BASE ASSY	77852	WARPED	20090409005	PNR
LTIO-540-J2BD	8011	ENGINE STARTER		INTERMITTENT	20090730003	PNR
LTIO-540-J2BD	8011	STARTER	MHB4014R	INTERMITTENT	20091102007	PNR
LTIO-540-J2BD	8500	ENGINE	TI0540J2BD	CRACKED	20090506012	ATL
LTIO-540-J2BD	8520	ENGINE	LW19332S	DAMAGED	20090901013	QUE
LTIO-540-J2BD	8520	TAPPET BODY	72877	CONTAMINATED	20090911004	PAC
LTIO-540-J2BD	8520	STUS	5015	SHEARED	20091109005	ATL
LTIO-540-J2BD	8530	EXHAUST VALVE SEAT	LW13322	LOOSE	20090407002	ONT
LTS-101-700D-2	7314	FUEL PUMP ASSY	430137702	FAILED	20090612002	QUE
O-235-L2C	7160	CAMSHAFT	75706	WORN	20090716002	ONT
O-235-L2C	7322	CARBURETOR	105267	FAULTY	20090608003	ONT
O-235-L2C	8520	CRANKCASE	0235L2C	CRACKED	20090414003	ONT
O-235-L2C	8520	ENGINE	O235L2C	FAILURE	20090417004	ONT
O-235-L2C	8520	CRANKCASE	LW13282	UNSERVICEABLE	20091028005	PNR
O-235-N2C	8500	BASE ASSY	77852	FLANGE CRACKED	20091005006	ONT
O-320-A2B	8550	OIL PRESSURE SCREEN HOUSING	62815	CRACKED	20090612004	ONT
O-320-A2D	8520	FOLLOWER	72877	BROKEN	20090915003	ONT
O-320-D2J	8530	PISTON	75089	BROKEN	20090824009	ONT
O-320-E2D	7322	CARBURETOR FLOAT	30804	FLOAT 1/2 FULL	20090416003	PAC
O-320-E2D	8500	ENGINE	0320E2D	CONTAMINATED	20090425001	PNR
O-320-E2D	8530	CYLINDER	AEL65102	FAULTY	20090805004	ONT
O-320-E2D	8530	CYLINDER	AEL65102	CRACKED HEAD	20090629001	ONT
O-320-E3D	8530	ROCKER ARM	58297M54	BROKEN	20090401007	PNR
O-320-H2AD	3020	CARBURETOR HEAT C	S123015	BROKEN	20090407003	ONT
O-320-H2AD	7300	MIXTURE C	MC60072	JAMMED	20090407004	PNR
O-320-H2AD	7320	CARBURATOR	105217	FAULTY	20090914004	ATL
O-320-H2AD	8520	CONNECTING ROD	78030	INCORRECT PART	20091021003	PAC
O-320-H2AD	8530	CYLINDER HEAD	ECl15317	GOOD	20091027006	PNR
O-360-A1A	8550	OIL LINE B NUT		LOOSENED	20090706007	PNR
O-360-A1F6	7310	FUEL DIST		RPM DECAY	20090923001	PNR
O-360-A1F6	7322	FUEL CONTROL		FAULTY	20090731002	PNR
O-360-A1F6	7510	ANTI-ICING SYSTEM	17520883	CRACKED	20090812001	PNR
O-360-A4K	7414	ROTOR SHAFT	M3548	BROKEN	20090609004	QUE
O-360-A4K	8530	CYLINDER #1	LW12427	CRACKED	20090910001	QUE
O-360-A4K	8530	CYLINDER	G8537F	CRACKED	20090601003	QUE
O-360-A4M	8530	CYLINDER	AEL65102	BROKEN	20090921006	PNR
O-360-A4M	8530	CYLINDER		FAULTY	20090708005	ONT
O-360-A4M	8530	PISTON	SL75089	CRACKED	20091114001	PAC
O-540-F1B5	8530	SEAT - VALVE SPRING UPPER	LW16475	BROKEN	20090818005	PAC
O-540-J3C5D	7713	PRESSURE IND	C662035	CONTAMINATED	20090506011	QUE
T5313B	7421	IGNITER PLUG	FHE2112	FAILED	20091120004	QUE
T5313B	7421	IGNITER PLUG	FHE2112	FAILED	20091120005	QUE
T5317A	7323	TURBINE GOVERNOR	116085023	DROOP	20090806005	PNR
T5317B	7314	FUEL PUMP PRIMARY SHAFT	117078001	SPLINES WORN OUT	20091006004	PAC

MAKE/ MODEL	JASC	PART NAME	PART No	PART CONDITION	SDR No.	RGN
TIO-540-A2C	2410	PULLEY	36B19484	BROKEN	20090427001	QUE
TIO-540-A2C	8550	OIL FILTER ADAPTER GASKET	LW12795	TORN	20091228001	PAC
TIO-540-AJ1A	7313	FUEL NOZZLE		DEBRIS	20091216006	ONT
TIO-540-AJ1A	8100	TURBINE	NH100089740	FAILED	20090506006	ONT
TIO-540-J2B	8120	TURBOCHARGER	LW12463	FAILED	20090615012	PNR
TIO-540-J2B	8520	ENGINE	LTIO540J2B	BROKEN	20090611006	PNR
TIO-541-E1C4	8530	INTAKE VALVE		BROKEN STEM	20090409004	PAC
<i>BOMBARDIER ROTAX</i>						
912 F3	7600	THROTTLE CABLE ASSY	2076000196	BROKEN	20091021013	PAC
912 F3	8550	ENGINE	912F3	SEIZED	20090812004	ONT
914 F3	8520	LIFTER	881831	WORN	20090702014	NCR
<i>CFE</i>						
CFE73811B	7321	HYDROMECHANICAL UNIT	5085T40G04	FAILED	20091110009	ONT
<i>CFM INTERNATIONAL</i>						
CFM56-5A1	7200	ENGINE		FAULTY	20090827001	QUE
CFM56-5A1	7250	HPT BLADE		FAILED	20090717001	QUE
CFM56-5A1	7500	15TH STAGE BLEED DUCT	2380510501	CRACKED	20090604009	QUE
CFM56-5A5	7320	FUEL CONTROL		FAULTY	20090924004	QUE
CFM56-7B20	2840	FUEL FILTER DIFF PRESS SW	QA07995	FAULTY	20090420006	PNR
CFM56-7B20	7230	FAN BLADE PLATFORM	3400028160	CRACKED	20090929007	ONT
CFM56-7B22	7500	PRE COOLER CONTROL VALVE	1296662	FAILED	20091210011	PNR
<i>CURTISS WRIGHT</i>						
982C9HE2	7120	BOLT	RC2748	LOOSE	20091027009	PAC
982C9HE2	7230	ENGINE	982C9HE2	FAILED	20090603004	PAC
982C9HE2	7800	EXHAUST		CRACKED BROKEN	20090824004	PAC
982C9HE2	8500	ENGINE R1820	98C9HE2QFC	DAMAGED	20090603001	PAC
982C9HE2	8520	ENGINE POWER	R1820	SEIZED	20090730007	PAC
982C9HE2	8520	ENGINE	R1820	DAMAGED	20090603002	PAC
982C9HE2	8530	CYLINDER	CON0080463	POOR	20090724002	PAC
982C9HE2	8530	ENGINE CYLINDER	R1820	DAMAGED	20090619015	PAC
982C9HE2	8530	OIL TRANSFER TUBE	WRIGHT	BROKEN	20090611002	PAC
<i>GARRETT</i>						
TFE731-2-3B	7300	FUEL CONTROL UNIT	307080011	UNSERVICEABLE	20090813009	PNR
TFE731-5BR	7280	OIL SYSTEM		LEAKED	20090825002	ONT
TFE731-60-1C	7261	PUMP OIL LUBE	30607016	LEAKING	20090504001	QUE
TPE331-10UA	7210	BEARING	31035851	NEW	20091209003	PNR
TPE331-10UA-511G	0	#1 TURBINE ROTOR	31081642	NEW	20091029003	PNR
TPE331-10UA-511G	7320	FUEL SHUTOFF VALVE	39423091	WON'T OPEN	20090917004	PNR
TPE331-10UGR	7314	FUEL PUMP		FAILED	20091029005	PNR
TPE331-10UGR-514H	7210	BEARING	31030351	BROKEN	20090709004	QUE
TPE331-11	7230	IMPELLER	31081822	CRACKED	20090825006	ONT
TPE331-11U	2823	FUEL SHUT OFF	394423091	FAULTY	20090619012	ONT
TPE331-11U-612	7280	ACCESSORY DRIVE OIL JET	31035811	BROKEN	20090708007	PNR
TPE331-11U-612G	7250	#1 TURBINE ROTOR BLADES	31081251	FAILED	20091125004	PNR
TPE331-11U-612G	7500	PLENUM	310166812	USED	20090617007	PNR
TPE331-12UAR-701H	7321	FUEL CONTROL UNIT	89778025	LEAKING	20090925002	PNR
TPE331-12UHR	6123	NTS VALVE	701000121	FAULTY	20090519004	ONT
TPE331-12UHR	7320	FUEL CNTL		OVERHEATED	20090519008	ONT
TPE331-12UHR	7324	O-RING	S9412524	EXTRUDED	20091110006	PNR
TPE331-5-251K	7200	ENGINE		SMOKING	20090706008	PNR
TPE331-6-252B	7310	FUEL VALVE	39423091	FAILED	20091113002	QUE
<i>GENERAL ELECTRIC</i>						
CF34-3A	7320	VG CABLE ASSY	4043T02P05	WORN	20090529001	QUE
CF34-3A	7321	FUEL CONTROL		SERVICEABLE	20091216003	PNR
CF34-3B	7230	FAN CASE ASSY	6052T01G08	CRACKED	20090924008	QUE
CF34-3B	7230	FAN AFT CASE	6052T01G08	USED	20091020004	PNR
CF34-3B1	4900	APU	38004883	FAILED	20090502003	QUE
CF34-3B1	7200	ENGINE	CF343B1	CONTAMINATED	20090703004	QUE
CF34-3B1	7200	ENGINE		OVERHEATED	20091029001	QUE
CF34-3B1	7230	ENGINE ASSY (L/H)	CF343B1	OVERHEATED	20090905001	QUE
CF34-3B1	7500	LOCKING TAB	3056T13P01	NUTS LOOSE	20090728005	PNR
CT58-140-1	7200	ENGINE		DEBRIS	20090827002	PAC
CT58-140-1	7312	FUEL/OIL COOLER	37D400479P101	LEAKING FUEL	20090811008	PAC
CT58-140-1	7321	FUEL CONTROL	7257255	FAULTY	20090820007	PAC
<i>HONEYWELL</i>						
AS907-1-1A	1220	OIL CAP	30360613	CRACKED	20090923002	QUE
AS907-1-1A	7261	OIL DIPSTICK CHAIN		PINCHED	20090629008	QUE
TFE731-20BR-1B	7932	GAGE LIQUID LEVEL	3615309481	BROKEN	20090618001	QUE
TFE731-50R	7260	BEARING	30728851	BINDING	20090506009	PNR
<i>INTERNATIONAL AERO</i>						
V2524-A5	7200	ENGINE	V2524	MISSED TESTING	20091030004	QUE

MAKE/ MODEL	JASC	PART NAME	PART No	PART CONDITION	SDR No.	RGN
V2527-A5	7500	VALVE 7TH STAGE BLEED	AC69859	STUCK OPEN	20090727005	ONT
<i>PRATT & WHITNEY - CAN</i>						
JT15D-4	7230	3 5 BEARING	310164801	SEVERELY WORN	20091208004	ATL
PT6A-114	7250	TURBINE		FAILED	20090429002	ATL
PT6A-114A	7200	ENGINE		DAMAGED	20090408008	QUE
PT6A-114A	7200	ENGINE		GRINDING NOISE	20091215010	QUE
PT6A-114A	7250	POWER TURBINE		CORRODED	20090814001	ATL
PT6A-114A	7320	FUEL CONTROL		OVERHEATED	20090508005	PNR
PT6A-20	7200	ENGINE		SEIZED	20090408011	QUE
PT6A-21	7261	SECONDARY FILTER	305925701	DAMAGED	20090526005	ONT
PT6A-21	7321	GOVERNOR		FAULTY	20091126001	ONT
PT6A-27	7250	POWER TURBINE BLADE		SCRAP	20090629003	PNR
PT6A-27	7250	TURBINE		FAILED	20090423010	ATL
PT6A-27	7321	FUEL CONTROL		FAULTY	20091222005	QUE
PT6A-28	7200	ENGINE		DEBRIS	20090403004	QUE
PT6A-28	7200	ENGINE		FAILED	20090413001	ATL
PT6A-28	7230	CT BLADE		FAILED	20090615001	ATL
PT6A-34	7230	TURBINE BLADE	312075101	SULFIDATION CORR	20091222009	PNR
PT6A-34	7321	FUEL CONTROL		FAULTY	20091222001	QUE
PT6A-34	7500	BLEED AIR SYSTEM		DEFECTIVE	20090622008	ONT
PT6A-34	7532	BLEED VALVE	310082903	DEFECTIVE	20090622009	ONT
PT6A-34AG	7200	ENGINE		SMOKING	20091222004	QUE
PT6A-41	7230	COMPRESSOR		FAILED	20090421002	ATL
PT6A-41	7280	O-RING	AS3209114	CUT	20090612005	PNR
PT6A-41	7321	FUEL CONTROL UNIT	3244755222119	FAILED	20091208007	PNR
PT6A-42	2820	FUEL HOSE	330995F100270	DELAMINATING	20090824008	PNR
PT6A-42	7210	1ST STAGE SUN GEAR	3028456	FAILED	20090608002	ATL
PT6A-42	7250	TURBINE		HOT SECTION DISTRESS	20091217001	ATL
PT6A-42	7311	OIL-TO-FUEL HEATER	10585K	CRACKED	20090709003	PNR
PT6A-42	7314	DRIVE SPLINE	3997015	SHEARED	20090918007	ONT
PT6A-50	7210	GEAR		FAILED	20091216001	ATL
PT6A-50	7230	FIRST STAGE COMPRESSOR	3017701	FOREIGN OBJECT	20091028008	ATL
PT6A-50	7900	ENGINE	PT6A50GASSECT	LEAKING	20090706002	ONT
PT6A-6	7250	TURBINE		STALLING	20090608001	ATL
PT6A-60AG	7320	FUEL CONTROL		FAULTY	20090408009	QUE
PT6A-65B	5420	FIRE WALL WEB	11498002587	PERFORATED	20091217006	PNR
PT6A-65B	7500	PY LINE	3032125	CRACKED	20090625007	PAC
PT6A-65B	7603	INPUT LEVER	50944078	WORN	20091112004	PAC
PT6A-66B	7280	OIL SYSTEM		LEAKING	20090911012	ONT
PT6A-67A	7200	ENGINE		RUBBING	20091019003	ATL
PT6A-67A	7200	ENGINE		CONTAMINATED	20091027004	ATL
PT6A-67A	7320	SPACER		FAULTY	20090828004	ONT
PT6A-67B	7712	TORQUE LIMITER	32448822	LEAKING	20090721004	ONT
PT6A-67B	7712	TORQUE LIMITER	32448821	STRIPPED	20090714008	ONT
PT6A-67D	2435	STARTER GENERATOR	23078019	UNSERVICEABLE	20090427003	ONT
PT6A-67D	2612	FWD FIRE LOOP	24412886	BROKEN CRACKED	20091216005	PAC
PT6A-67D	7200	ENGINE		CONTAMINATED	20090911009	ONT
PT6A-67D	7200	POWER SECTION	3044700	FAILED	20090626005	PAC
PT6A-67D	7210	BOLTS		SHEARED	20090820001	ATL
PT6A-67D	7210	1ST STAGE CARRIER MACHINE	MS949034	FRACTURED	20091119004	PNR
PT6A-67D	7250	BLADE PT2	304418301	FAILED	20091028007	ATL
PT6A-67D	7250	POWER TURBINE BLADE	304418301	FAILED	20091015003	ATL
PT6A-67D	7250	PT BLADES	311845201	CRACKED	20091214001	ATL
PT6A-67D	7261	FITTING	310047001	CRACKED	20091016002	ONT
PT6T-3	7200	ENGINE		OVERHEATED	20090408010	QUE
PT6T-3	7310	FUEL DIST		LOOSE	20091222003	QUE
PT6T-3B	7321	TUBE ASSY AIR PRESSURE	3017393	CRACKED	20090706009	PAC
PT6T-3B	7321	AFCU		PINCHED	20090408007	QUE
PW119B	7230	COMPRESSOR		FOREIGN OBJECTS	20090423008	ATL
PW119B	7321	ELECTRONIC ENGINE CONTROL		UNSERVICABLE	20090911007	ONT
PW120	7200	GAS GENERATOR CASE ASSEMBLY	307005901	CRACKED	20090618010	ONT
PW120	7250	FIRST STAGE PT BLADE	312096301	DAMAGED	20090714001	ATL
PW120	7250	LP TURBINE BLADE	312345201	FAILED	20091223009	ATL
PW120	7250	PT1 BLADE	312098301E	FRACTURED	20091204009	PNR
PW120	7720	T6 TRIM HARNESS	3037191	OPEN CIRCUIT	20090507005	PNR
PW120A	1420	CONNECTORS		FAULTY	20090428004	ATL
PW120A	7120	PEDESTAL	LM43163	USED	20090406001	ATL
PW120A	7200	ENGINE		LOUD NOISE	20090408005	QUE
PW120A	7250	LP TURBINE BLADE	304915201	FAILED	20090513001	ATL
PW120A	7250	LP TURBINE BLADES	304915201	FAILED	20090615002	ATL
PW120A	7310	HP FUEL FILTER	1111084	CLOGGED	20090506008	PNR
PW120A	7600	TSCU	30005000046	FAILED	20090924005	ATL
PW121	6123	PREFORMED		DAMAGED	20090401010	QUE
PW121	7200	NO 6&7 BEARING VENT TUBE		FRACTURED	20090911008	ONT

MAKE/ MODEL	JASC	PART NAME	PART No	PART CONDITION	SDR No.	RGN
PW121	7230	AIR SEAL	310805501	FAILED	20090713001	ATL
PW121	7261	OIL TANK TUBE ASSY	3037344	TORN	20090428007	PNR
PW121	7321	EEC		FAILED	20090408006	QUE
PW121	7921	COOLER	28E997	OVERHAULED	20090828002	PNR
PW123	7210	#12 LOCKING WASHER L/H		CONTAMINATED	20090408002	ATL
PW123	7230	COMPRESSOR		INCORRECT PART	20090511001	ATL
PW123	8300	GEAR	311657901	DAMAGED	20090416007	ATL
PW123D	7921	PRE-COOLER	10558000	CRACKED	20091110004	QUE
PW123E	7200	ENGINE		SEIZED	20091221002	QUE
PW123E	7261	OIL SYSTEM		OIL SMELL	20091221001	QUE
PW123E	7280	OIL SYSTEM		OIL SMELL	20091215011	QUE
PW125B	7200	#5 BEARING HOUSING BOLTS	MS945226	FAILED	20090421001	ATL
PW126	7200	ENGINE		SEIZED	20090911011	ONT
PW127	7250	POWER TURBINE BLADE		FRACTURE	20090903005	ONT
PW127B	7261	GASKET		LEAKING	20090911010	ONT
PW127E	7261	OIL SYSTEM		LOW PRESSURE	20091215009	QUE
PW127J	7200	ENGINE		BURNT LINE	20090401013	QUE
PW150A	7320	FADEC	312240008	FAULTY	20090619001	ONT
PW150A	7500	P2 7 HBOV	304796605	FAULTY	20090824010	ONT
PW150A	7931	MAIN OIL PRESSURE SENSOR	312244801	FAULTY	20090407001	ONT
PW305A	7200	ENGINE		FRACTURED	20090401012	QUE
PW305A	7261	OIL SYSTEM		SMOKE	20091215008	QUE
PW306C	7314	PUMP		LOW PRESSURE	20091120003	ONT
PW308C	7500	BLEED AIR		SURGE NOISE	20091221003	QUE
PW530A	7314	PUMP		UNSERVICEABLE	20090918010	ONT
PW530A	7321	FUEL CONTROL UNIT	31J234712	UNSERVICEABLE	20090918009	ONT
PW535A	7321	FUEL CONTROL		FAULTY	20090403003	QUE
PW545B	7321	FUEL CONTROL		FAULTY	20091222002	QUE
PW545B	7532	BOV TORQUE MOTOR	31J285704	UNSERVICEABLE	20090918008	ONT
PW617F-E	7321	FUEL METERING UNIT	1009000	DAMAGED	20090828006	ONT
PRATT & WHITNEY-USA						
JT8D-15	7220	NOSE DOME	65196842	CRACKED	20090622011	ONT
JT8D-15	7240	DIFUSSER	780030	CRACKED	20090619008	ONT
JT8D-15	7240	SHROUD	79104547	DELAMINATED	20090619007	ONT
JT8D-15	7500	CLAMP	BACC10DU350ABE	USED	20090625006	PNR
JT8D-15A	7310	FUEL MANIFOLD	629141	CHAFED THROUGH	20090416004	ONT
JT8D-17	7261	ENGINE STARTER SEAL		LEAKING	20090716006	PNR
PW4060	7714	BEARING		FAILED	20090527003	QUE
R-985-AN-14B	8530	CYLINDER	399355	CRACK	20091203002	QUE
R-985-AN-14B	8550	PLUNGER	1139	WORN	20090918006	ONT
WASP CB3	8530	FRONT CYLINDER	356995	CRACKED	20090813007	PAC
WASP CB3	8530	CYLINDER	R2800CB3	UNSERVICEABLE	20090616003	PAC
ROLLS ROYCE - GY						
BR700-715A1-30	7200	FAN BLADE	BRH20390	SUSPECT	20091202012	QUE
BR700-715A1-30	7240	HP TURBINE BLADE	FW45914	FAILED	20090424001	QUE
BR700-715A1-30	7250	BLADE	FW45914	FAILED	20090512006	QUE
BR700-715A1-30	7250	HP1 TURBINE DISC	BRH19977	NO LOCKING PLUG	20091007001	QUE
BR700-715A1-30	7500	AIR TUBES	BRH18910	NOT INSTALLED	20090806009	QUE
DART 534-2	7250	BLADES	RK39249	BROKEN	20090604004	ONT
DART 534-2	7280	ENGINE		CONTAMINATED	20090615010	PNR
ROLLS ROYCE - UK						
RB211 TRENT 772B-60	7230	COMPRESSOR BLADE		DAMAGED	20090924003	QUE
TELEDYNE CONTINENTAL						
C-185-12F	8530	CYLINDER ASSY	TIST611DCA	BROKENVALVEGUIDE	20091113003	QUE
GTSIO-520-H	7310	FITTING	AN9112	CRACKED	20090819006	PNR
GTSIO-520-H	7310	FITTING	AN9112	CRACKED	20090819006	PNR
GTSIO-520-L	8530	OUTER VALVE SPRING	637837	BROKEN	20090826009	ONT
IO-360-KB	8530	RETAINER	631996	CRACKED	20090514006	PAC
IO-520	8530	CYLINDRES		CRACKED	20090403010	QUE
IO-520-BB	7322	FUEL CONTROL		FAULTY	20091124005	ONT
IO-520-BB	8520	PLATE	643629	FAILED	20090504003	ONT
IO-520-D	8520	CRANKCASE	653961	CRACK	20091106004	QUE
IO-520-D	8530	PUSH ROD	538304	BENT	20090615005	PNR
IO-520-F	0	STARTER ADAPTER	643259A18R	OVERHAULED	20090622010	PNR
IO-520-F	8530	ENGINE CYLINDER	SA52006A1	CRACKED	20090722003	ONT
IO-520-F	8530	CYLINDER	649166AG	CRACKED	20090622012	PNR
IO-520-F	8530	ENGINE CYLINDER	TIST712ACA	CRACKED	20090601005	ONT
IO-520-F	8550	OIL SUMP	633412	WEAR	20090914005	PAC
IO-520-FCD	8520	CRANKSHAFT	10520F	BROKEN	20090902009	PNR
IO-520-FCD	8530	CYLINDER	SAC52001	CRACKED	20090619016	PNR
IO-520-FCD	8530	CYLINDER ASSY	SAC52001	CRACKED	20090619014	PNR
IO-520-L	8530	EXHAUST VALVE/GUIDE		STUCK	20090622020	PNR
IO-520-MB	2820	FUEL SYSTEM		FAULTY	20090623004	QUE
IO-550-F	8530	CYLINDER	655471A3	HEAD CRACKED	20091005009	ONT
IO-550-N	7313	FUEL INJECTOR	6576682234	IN SERVICE	20090507011	PNR
O-200-A	2434	RETAINER	352030	UNSERVICEABLE	20091007004	PAC

MAKE/ MODEL	JASC	PART NAME	PART No	PART CONDITION	SDR No.	RGN
O-200-A	7322	FUEL CONTROL		CONTAMINATED	20090421007	ONT
O-200-A	8530	EXHAUST VALVE	AEC655971	BROKEN	20090908005	ONT
O-200-A	8530	EXHAUST VALVE	646612	STUCK OPEN	20090731003	ONT
O-200-A	8530	EXHAUST VALVE	646612	STUCK OPEN	20090731004	ONT
O-200-A	8530	VALVE STEM	646612	SERVICEABLE	20090619006	ONT
O-200-A	8530	ENGINE CYLINDER	SA102001A	BURST	20091019006	QUE
O-300-C	8550	OIL SYSTEM		FAULTY	20090914003	PAC
O-470-RCS	8530	CYLINDER		INCORRECT PART	20090915006	PNR
TAE12502	6120	PROPELLER CONTROL VALVE	057212E002801	LEAKING OIL	20091127002	ONT
TAE1250299	8520	ENGINE	TAE1250299	FAULTY	20091117007	ONT
TSIO-360-FB	8550	NYLON	632878	INCORRECT PART	20090520002	PAC
TSIO-520-E	7930	OIL PRESSURE LINE REDUCER		SERVICEABLE	20090410001	QUE
TSIO-520-EB	8520	CRANKCASE	643202	CRACKED	20090520003	PNR
TSIO-520-M	8500	ENGINE	TSIO520HC	FAILED	20090706004	PNR
TSIO-520-NB	8530	CONNECTING ROD	11621RAM	SEVERLY WORN	20090403002	PNR
<i>THIELERT</i>						
TAE12502	6120	PROPELLER CONTROL VALVE	057212E002801	LEAKING OIL	20091127002	ONT
TAE1250299	8520	ENGINE	TAE1250299	FAULTY	20091117007	ONT
<i>TURBOMECA</i>						
ARRIEL 1D1	7200	ENGINE	LTS101700D2	FAULTY	20090903003	PNR
ARRIEL 1D1	7200	ENGINE		CONTAMINATED	20090910004	QUE
ARRIEL 1D1	7250	FREE TURBINE BLADE	292803080	BROKEN	20090720002	ONT
ARRIEL 1D1	7250	1STAGE TURBINE BLADES	229225A1L0	DEFORMED	20091116011	PAC
ARRIEL 1D1	7250	MODULE 3	70BM035420	FAULTY	20091005010	QUE
ARRIEL 1D1	7250	MODULE 3	70BM035420	FAULTY	20091005011	QUE
ARRIEL 1D1	7280	MAGNETIC SEAL	9560134100	LEAKING	20090910005	QUE
ARRIEL 2B	7297	PYROMETRIC HARNESS	9550176740	SATISFACTORY	20090806013	ONT
ARRIUS 2F	7200	ENGINE		FAULTY	20090407011	ONT
ARRIUS 2F	7261	ENGINE OIL PUMP DRIVE	319157200	DECOUPLED	20091202017	QUE
ARRIUS 2F	7321	FCU	319878010	LEAKING	20091027007	PAC
ARTOUSTE IIIB1	7261	GRAPHITE SEAL		UNSERVICEABLE	20090626007	PAC
<i>WALTER - CK</i>						
M601E-11	7200	SUSP START/ GENSPLINEGEAR		FAULTY	20090611004	ONT
PROPELLER						
<i>AEROPRODUCTS</i>						
A6441FN-606	6120	PROPELLER REGULATOR	6505680	FAILURE	20091130001	QUE
A6441FN-606	6121	PROP SYNC	6508977	BURNT	20090615011	PNR
A6441FN-606A	6120	BRUSH BLOCK	6505679	WORN	20090824011	PNR
<i>DOWTY ROTOL</i>						
R333/4-82-F/12	6114	PISTON SEAL O-RING	5703503AF	TWISTED AND NICK	20090512008	PNR
R408/6-123-F	6120	BUS BAR	697070212	BROKEN	20090826013	ONT
R408/6-123-F	6120	MPU	666000459	FAULTY	20090622002	ONT
<i>HAMILTON STANDARD</i>						
14SF-5	6110	BALL SEPARATOR	782307	BROKEN	20091218002	ONT
14SF-7	6100	BLADE	SFA13MIROAD	SURFACE DAMAGE	20091201006	ATL
14SF-7	6111	BEARING	7823011	DAMAGED	20090909001	ONT
14SF-7	6111	PROPELLER BLADE	SFA13MIROAD	MULTIPLE CRACKS	20090519005	PNR
14SF-7	6120	PROP CONTROL UNIT	78249050	FAULTY	20090428006	PNR
14SF-7	6122	PROPELLER CONTROL UNIT	782490A50	FAULTY	20090501004	ATL
14SF-15	3060	SPINNER BULKHEAD	7849141	SHORTED/BURNT	20091102011	ATL
14SF-23	6120	PROPELLER CONTROL UNIT	782490A47	REPLACED	20091016001	ONT
23E50-473	6122	PROPELLER GOVERNOR	4G8G30M	SERVICEABLE	20090408001	PNR
43E60-581	6122	GOVERNOR		FAULTY	20090403006	PNR
54H60-117	6120	VALVE HOUSING	582855	LEAKING	20090914001	ONT
54H60-117	6120	VALVE HOUSING	582855	REPLACED	20091214010	ONT
<i>HARTZELL</i>						
HC-12X20-7D	6111	PROPELLER BLADES	V8433N	DAMAGED	20090826010	ONT
HC-B3R30-2E	6100	SCREW	A0321	BROKEN	20091127005	PAC
HC-B3R30-4B	6113	SPINNER BULKHEAD	83632PR	CRACKED	20090901014	QUE
HC-B3TN-3BY	6100	BLADE CLAMP	C13019S	UNSERVICEABLE	20090605006	PAC
HC-B3TN-3D	6123	BETA SWITCH	KX5116	FAILED	20090916001	ATL
HC-B3TN-3DY	6114	CYLINDER	B18032	CRACKED	20090622018	PAC
HC-B3TN-3DY	6114	CYLINDER	B18032	CRACKED	20090622019	PAC
HC-B3TN-3G	6114	CYLINDER	B18032	CRACKED	20090622017	PAC
HC-B3TN-5FL	6123	UNFEATHER PUMP	A4033A	UNSERVICEABLE	20090727012	PAC
HC-B3TN-5G	6114	CYLINDER	B18032	CRACKED	20090622016	PAC
HC-B3TN-5M	6120	START LOCK		BROKEN	20090707005	PNR
HC-B4MP-3A	3060	DE-ICE SYSTEM	4E26241	DAMAGED	20090807006	PNR
HC-B4MP-3A	6111	BLADE CLAMP	C19771P	UNSERVICEABLE	20090605002	PAC
HC-C2YR-2CLEUF	6111	PROPELLER BLADE	FJC7666A	INCORRECT PART	20090817004	PAC
HC-D4N-3A	6120	BRACKET ASSY WELDED	1019400017	BROKEN	20090402006	PNR
HC-D4N-3C	6114	P C BRACKET	B4652	CRACKED	20090507009	PNR

MAKE/ MODEL	JASC	PART NAME	PART No	PART CONDITION	SDR No.	RGN
HC-E3YR-2ATF	6111	THRUST BEARING	B2202	CRACKED	20090604005	PNR
HC-E4A-2A	6111	BLADE SEAL	C63371	SPLIT	20090507007	PNR
HC-E4A-3A	6111	BLADE SEAL	C63371	SPLIT	20090507008	PNR
HC-E4A-3D	3060	DE-ICE SYSTEM		DEBRIS	20091130004	ONT
HC-E4A-3I	3060	AUTO RELAY	MS24166D1	OC	20091008006	PAC
HC-E4N-3G	6114	PROPELLER	HCE4N3G	OVERHAULED	20090908006	PNR
HC-E4N-3G	6120	SPRING	5052447815	BROKEN	20090604010	PNR
HC-F3YR-2UF	6111	HUB	C32661	UNSERVICEABLE	20091013004	PAC
HC-F3YR-2UF	6120	PITCH CHANGE FORK	B3252	SCRAP	20091013005	PAC
HC-H3YN-2F	6112	DEICE BOOT	102196	FAILURE	20091201003	PAC
HC-M2YR-2CEUF	6123	ACCUMULATOR	8907021	ORIGINAL	20091006003	PAC
<i>MCCAULEY</i>						
1A100/ACM	8550	PROP GOVERNOR IDLER SHAFT	LW13896	MISSING	20090826015	NCR
1A101/DCM6948	6110	PROPELLER	DCM695	UNSERVICEABLE	20090403009	PAC
1A101/HCM	6113	BULKHEAD HELICE	4500465	CRACKED	20091005001	QUE
1A101/HCM6948	6113	BULKHEAD	4500465	CRACKED	20090401020	ONT
1A102/OCM6948	6113	BULKHEAD	4500465	CRACKED	20090411001	ONT
1A103/TCM6758	6114	HUB	1A103TCM694	UNSERVICEABLE	20090717006	PAC
1B90/CM	6111	FIXED PITCH PROP	1B90CM7150	SURFACE CORROSION	20091110003	ONT
1C235/LFA7570	6111	FIXED PITCH PROPELLER	1C235LFA7570	CORRODED	20091217007	ONT
2A34C203C	6113	BULKHEAD	D7524	CRACKED	20090501005	ONT
2AF34C55	6114	HUB	D4883C55	UNSERVICEABLE	20090428005	PAC
3AF32C87-NR	6114	PROPELLER HUB		SCRAP	20091203004	PNR
3GFR34C703	2000	SPRINGS		INCORRECT PART	20090730006	PAC
4HFR34C652	6114	RETAINER	3102573	CRACKED	20090619013	ONT
D2A34C58	6114	HUB ASSY	D4197	REPLACED	20091026002	ONT
<i>SENSENICH</i>						
M74DM-52	6111	PROPELLER	M74DM52	CORRODED	20091214004	ONT
EQUIPMENT						
<i>ABSC</i>						
50060283	3246	BOLT	MS2125006030	MISSING	20090505005	ONT
<i>ACK TECHNOLOGIES</i>						
E01	2562	BEACON	E01	FAULTY	20090507006	PNR
<i>AIR TRACTOR</i>						
AT802A	2400	ELECTRICAL SYS		FAULTY	20090813014	PAC
<i>AIRCRAFT PARTS</i>						
150SG122Q	2435	STARTER/GENERATOR	150SG122Q	ARCED BURNT	20090610006	PNR
<i>APCO AVIATION</i>						
200SGL132Q	2435	FRICITION RING	200SGL132Q	DAMAGED - SPLIT	20091203001	ONT
<i>ARDCO</i>						
414701028	3452	ANTENNA		FAULTY	20091110010	PNR
<i>ARTEX</i>						
4530006	2562	406 LITHIUM BATTERY	4520133REVN	FAILED	20090422004	PNR
4530006	2562	406 LITHIUM BATTERY	4520133REVN	FAILED	20090422005	PNR
C406N	2562	BEACON	C406N	BROKEN	20090403007	PNR
ME406	2562	BEACON	ME406	FAILED	20090424005	PNR
<i>AVLAT</i>						
S2C	3414	AIRSPED INDICATOR	EA51728PIT	UNSERVICEABLE	20090618012	PNR
<i>BEECH</i>						
9981000065	3211	BOLT	AN18232M	CRACKED	20091102010	QUE
B200	2312	SWITCH - PUSH TO TALK	993402531	FAILED	20090730009	PNR
<i>BENDIX</i>						
5F14LN3	7414	MAGNETO	5F14LN3	FAULTY	20090623005	PNR
S6LN1208	7414	CASE	S6LN1208	CRACKED	20090905002	PAC
<i>CESSNA</i>						
172N	2000	WING FAIRINGS	A221ANDA222	NEW	20090730002	ONT
S38522	2842	FUEL SENDER R/H	S38522	NEW	20091209002	ONT
U206G	3452	TRANSPONDER	414201114	SHORTED	20090626009	PNR
<i>CMC</i>						
CMA1100	3461	EFB	245604128000	MALFUNCTION	20091204001	QUE
<i>COLLINS AVIONICS</i>						
EQUIPMENT	2312	COMM SYSTEM		FAILED	20090812011	PNR
<i>CONAIR</i>						
12345	2612	FIRE DETECTION	12345	FAULTY	20090731006	PAC
<i>CORSAIR</i>						
MULTIPLE	1420	ELECTRICAL CONNECTORS	MS3459L10SL4S	FAILED	20090427002	ONT
<i>DEHAVILLAND - CAN</i>						

MAKE/ MODEL	JASC	PART NAME	PART No	PART CONDITION	SDR No.	RGN
C3US2567	3246	CABLE ASSY- TRIM&CHECK FW	C3US2691	USED	20090521001	PNR
C6US100015	2000	AXLE ASSY	C6US100015	NEW	20090701001	PNR
<i>DELCO</i>						
510767	7314	FUEL PUMP	510767	LEAKING	20090820009	PAC
<i>EASTERN AERO MARINE</i>						
T14AS	2564	INFLATION VALVE	B51810EAM	FAILED	20091209007	NCR
<i>EUROCOPTER FRANCE</i>						
MA12401	2930	SWITCH PRESSURE	MA12401	UNSERVICEABLE	20090525001	PNR
<i>FLIGHT EQUIPMENT</i>						
6731EL	5347	LINK ASSEMBLY	31768	BROKEN	20090819003	PNR
<i>GARMIN</i>						
130018211	3457	INSTALL MANUAL	5600982REVL	FALSE ERROR	20090422006	PNR
130018211	3457	INSTALL MANUAL	5600982REVL	FAULTY	20090422007	PNR
<i>GARRETT</i>						
39423091	7300	FSO VALVE	39423091	FAILED	20090720003	PNR
<i>GOODRICH</i>						
23048016	2435	ARMATURE	230481030	SHORTED	20091027005	PNR
23085001	2435	BEARING	3600918	FAILED	20090409002	PNR
230790002	2435	BEARING	M2040AC2	FAILED	20090813013	PNR
23048004M	2435	FAN	230481490	BROKEN	20091102006	PNR
<i>GOODYEAR</i>						
301003530	3244	TIRE	301003530	DAMAGED	20090629004	ONT
302120402	3245	TIRE TUBE	302120402	SPLIT	20090407016	PAC
302246401	3245	TIRE	302246401	FAILED	20090401017	ONT
<i>GRIMES MFG CO</i>						
209075325	2000	FILTER PR	25026011	NEW	20090430005	PAC
<i>HONEYWELL</i>						
38004883	4900	APU	38004883	FAULTY	20090616002	QUE
38008041	4900	APU	38008041	DEBRIS	20090629006	QUE
9301000001	3442	RADAR	9301000001	FAILED	20090813004	QUE
1151324-1	2562	EMERGENCY LOCATOR TRANSMI	11530461	FAULTY	20090508004	ONT
36150BD	4900	APU	36150BD	FAILED	20090629009	QUE
36150RJ	4900	APU	36150RJ	FAILED	20090624001	PNR
JG7039C1	2000	CLAMP	O316S	DEFECTIVE	20091125006	PNR
<i>INTERCONT DYNAMICS</i>						
22702032	3416	ENCODING ALTIMETER	22702032	ERRATIC	20090406009	PNR
<i>KANNAD</i>						
S182250202	2562	BEACON		FAULTY	20090910007	QUE
S182250202	2562	ELT CASE	S182250202	CRACKED	20091021006	PNR
<i>KELLY AEROSPACE</i>						
991059111RX	2421	ALTERNATOR	991059111RX	FAILED	20091125003	ONT
DOFF10300BR	2421	ALTERNATOR	DOFF10300BR	FAILED	20090620002	PNR
DOFF10300JR	2421	PLACARD/BOLTS	DOFF10300JR	LOOSE	20091030001	PAC
MZ4222	8011	BENDIX	MZ4222	INCORRECT PART	20090915007	PNR
<i>KIDDE</i>						
302158	2612	FIRE DETECTOR	302158	FAULTY	20090903004	PNR
<i>LAMAR ELECTRONICS CO</i>						
PM2401	8011	STARTER DRIVE GEAR	PM2401	BROKEN	20090717009	PNR
<i>LORD MFG</i>						
LM431	7120	PEDESTAL	LM43163	USED	20090526007	ATL
<i>MICHELIN</i>						
923150	3245	TIRE	923150	FAILED	20090401018	ONT
923150	3245	TIRE	923150	FAILED	20090401019	ONT
<i>NK</i>						
5182250202	2562	ELT CASING	5182250202	CRACKED	20090606001	PNR
<i>NORTHERN AIRBORNE</i>						
AMU50001	2350	AUDIO MANAGEMENT UNIT	AMU50001	SERVICEABLE	20091216002	PAC
<i>PIPER</i>						
1213HBG310	2913	PUMP	1213HBG310	BROKEN	20090430006	QUE
PA44180	2562	ELT	ELT1104	MALFUNCTION	20091028009	ATL
<i>PRATT & WHITNEY-CAN</i>						
324478974	7321	FUEL CONTROL UNIT	324478974	BROKEN	20090804001	ONT
PT6A41	6122	PROP GOVERNOR	8210007	WORN	20091229005	PNR
PW150A	7120	ISOLATOR MOUNT	9604208	SCRAP	20090714006	ONT
<i>PRECISION AIRMOTIVE</i>						
25765841	7322	FUEL DISTRIBUTION VALVE	25765841	STICKS	20090403005	PNR

MAKE/ MODEL	JASC	PART NAME	PART No	PART CONDITION	SDR No.	RGN
<i>ROCKWELL</i>						
2702776XXX	2300	AUDIO CONTROL PANEL	4110XXX	MALFUNCTION	20090826002	NCR
8221107103	2210	ALTITUDE PRESELECTOR	8221107103	INACCURATE	20091221007	PNR
<i>SIKORSKY</i>						
7635109002	6320	GEARBOX	7635109002	FAULTY	20090812003	PAC
S61	6320	BEARING CONE	SB3316101	NEW	20090812005	PAC
<i>SKY-TEC</i>						
14924PM	2435	STARTER CASING	14924PM	BROKEN	20091221005	ONT
<i>SLICK ELECTRO</i>						
4370	7414	ROTOR	4370	IMPROPER ASSY	20090623008	PAC
4371	7414	ROTOR	4371	IMPROPER ASSY	20090623009	PAC
4373	7414	IMPULSE COUPLING	M3529	BROKEN	20090902008	ONT
4381	7414	COIL	K3975	WORN	20090820008	PAC
4381	7414	COIL/DISTRIBUTOR	4381	WORN	20090707006	PAC
<i>TELEDYNE BENDIX</i>						
10790206	7414	CONTACT POINTS	10357174	LOSS OF CONTACT	20090715007	PAC
101630509	7414	HOUSING		BROKEN	20091119006	PAC
103493504	7414	COILS (5)	10391088	CRACKED	20090715004	PAC
103493704	7414	CONTACT POINTS	10382585	FAILED	20090910011	PAC
105005561	7414	DISTRIBUTOR GEAR	AB357586	LOOSE ELECTRODE	20091030002	PAC
106006169	7414	BEARING	2202	WORN	20090610005	PAC
106006169	7414	DISTRIBUTOR GEAR	10357586	TEETH STRIPPED	20090409006	PAC
106006169	7414	BEARINGS	22021081806	WORN	20091214009	PAC
1038291018	7414	VARIOUS		FAULTY	20090824006	PAC
1068291013	7414	COIL	103825881	ARCED	20091214011	PAC
1068291013	7414	POINTS AND COIL LEAD	10400184	GROUNDING OUT	20091023002	PAC
1068291018	7414	VARIOUS		INCORRECT ASSY	20090519003	PAC
BL3492901	7414	COIL WEDGE	10349219	LOOSE	20090710005	PAC
<i>TELEDYNE CONTINENTAL</i>						
103572101	7430	IGNITION SWITCH	103572101	NEW	20090722002	PNR
<i>TEXTRON LYCOMING</i>						
05K23037	8530	CYLINDER	LW11633	DAMAGED	20090827003	NCR
IO360L2A	8011	STARTER	149NL	SEIZED	20090915005	PNR
IO360L2A	8011	STARTER	149NL	UNSERVICEABLE	20090915004	PNR
<i>TRANS CAL INDUSTRIES</i>						
SSD120	3452	TRANSPONDER	SSD120	FAULTY	20090806011	ONT
<i>UNISON</i>						
4370	7414	DISTRIBUTOR BLOCK	K3822	LOOSE	20090707001	ONT
4370	7414	DISTRIBUTOR BLOCK GEAR	K3822	LOOSE	20090922002	ONT
4371	7414	MAGNETO	4371	FAULTY	20090610007	PNR
4372	7414	IMPULSE COUPLING STOP PIN	4372	WORN	20090427004	ONT
6310	7414	IMPLUSE COUPLING	M3050	PIECE MISSING	20090423012	PAC
6766	7414	BEARING CAP	K3630	LOOSE	20091110007	PAC
<i>UNITED INSTRUMENTS</i>						
5035P	3416	ALTIMETER		UNSERVICEABLE	20090812002	PNR
<i>WIPAIRE</i>						
8000	3246	FLOAT FITTING	8A02100003	CORRODED	20090415008	PAC
<i>WIPLINE</i>						
8000	3246	BLOCK TROLLEY	6A076303001	INCORRECT PART	20090622014	QUE
WHIPLINE8000	3246	FORWARD DRAG WIRE FITTING	9A02066005	BROKEN	20090827004	PAC
<i>WOODWARD</i>						
210632J	0	DRIVE SHAFT	3599054	FAULTY	20090722006	PNR
39423091	2823	FUEL SHUTOFF VALVE	39423091	UNSERVICEABLE	20090717004	PNR
8210212E	6122	PROP GOVERNOR	8210212E	FAULTY	20090422003	ONT

HEADQUARTERS

Transport Canada (AARDG)
Place de Ville, Tower C
Ottawa, ON K1A 0N8
Tel: 613-952-4357

REGIONAL OFFICES

Atlantic

Transport Canada
95 Foundry St., 6th Floor
Moncton, NB E1C 5H7
Tel: 1-800-387-4999

Prairie and Northern

Transport Canada
344 Edmonton Street
Winnipeg, MB R3C 0P6
Tel: 204-983-3152
1-888-463-0521

Ontario

Transport Canada
4900 Yonge St., Suite 400
Toronto, ON M2N 6A5
Tel: 416-952-0230

Quebec

Transport Canada
700 Leigh Capreol
Dorval, QC H4Y 1G7
Tel: 514-633-3319

Pacific

Transport Canada
800 Burrard St., Suite 620
Vancouver, BC V6Z 2J8
Tel: 604-666-3518

Ordering TC Publications & Forms

North America	1 888 830-4911
National Capital Region	613 991-4071
Fax	613 991-2081
E-Mail	MPS@tc.gc.ca

CIVIL AVIATION INTERNET SITES:

Civil Aviation Homepage

www.tc.gc.ca/civilaviation/menu.htm

Continuing Airworthiness

www.tc.gc.ca/CivilAviation/certification/continuing/About.htm

Canadian Aviation Regulations (CARs)

www.tc.gc.ca/civilaviation/regserv/Affairs/cars/menu.htm

Airworthiness Directive (ADs)

www.tc.gc.ca/cawis-swimn

Civil Aviation Safety Alert (CASAs)

www.tc.gc.ca/Civil-Aviation-Safety-Safety-Alerts

Service Difficulty Alerts

www.tc.gc.ca/civilaviation/certification/continuing/Alert/menu.htm

Service Difficulty Advisories

www.tc.gc.ca/CivilAviation/certification/continuing/Advisory/menu.htm

Airworthiness Notices

www.tc.gc.ca/civilaviation/maintenance/aarpc/ans/menu.htm

Web Service Difficulty Reporting System (WSDRS)

www.tc.gc.ca/wsdrs