



Transport
Canada

Transports
Canada

TP 6980E
(09/2010)

Issue 3/2010

Feedback

Canadian Aviation Service Difficulty Reports



TC-1004101



Canada

TABLE OF CONTENTS

Hangar Noise	3
Fixed Wing	3
Propellers.....	11
Heads Up	12
Equipment Airworthiness Directives (ADs)	13
FAA Unapproved Parts Notifications (UPNs)	13
Suspected Unapproved Parts (SUPS).....	14
FAA Special Airworthiness Information Bulletins (SAIBs)	14
Service Difficulty Reports	15
Headquarters	34
Regional Offices	34
Civil Aviation Internet Sites:.....	34

Feedback is published quarterly by the Continuing Airworthiness Division of Transport Canada, informing the aviation community of reported day-to-day problems that affect aircraft airworthiness in Canada.

Reproduction of original *Feedback* material is encouraged, but credit must be given to Transport Canada's *Feedback* magazine. Please forward one copy of the reproduction article to the Editor.

To obtain information concerning copyright ownership and restrictions on reproduction of the material, please address your correspondence to:

Jérémie Laviolette, Editor

Feedback

Transport Canada (AARDG)

Place de Ville, Tower C

Ottawa ON K1A 0N8

E-mail: jeremie.laviolette@tc.gc.ca

Tel.: 613-952-4360

Fax: 613-996-9178

Internet: www.tc.gc.ca/carwis-swimn

The articles contained in *Feedback* are derived from *Service Difficulty Reports* (SDRs) submitted by Aircraft Maintenance Engineers (AMEs), owners, operators and other sources in accordance with *Civil Aviation Regulation* (CAR) 521.

SDRs are normally published verbatim.

Transport Canada assumes no responsibility for the accuracy or content of any of these reports. Only spelling errors are corrected and content may be reduced as well as personal references deleted.

All defects or occurrences should be reported to Transport Canada through the Service Difficulty Reporting Program. For additional information about this program or concerning an article in *Feedback* magazine, contact your nearest Transport Canada Centre.

Feedback est aussi disponible en français.

© Her Majesty the Queen in Right of Canada, as represented by the Minister of Transport (2010).

TP 6980E

(03/2010)

TC-1004101

Printed on Forest Stewardship Council compliant paper. To learn more, visit www.fscCanada.org

HANGAR NOISE

DHC 3 MKIII (TURBO)

SDR # 20090910002 & 20090910003

Cracked - Vertical Stabilizer Spar Web & Rudder Attachment Bolt

During a scheduled inspection, a 10X visual magnification revealed a crack located under the radius of the National Aircraft Standard (NAS) 147-29 bolt head. Removal of the bolt revealed no crack, however, closer examination revealed the bolt washer was incorrect and was not chamfered as required for NAS bolts. The Illustrated Parts Catalogue (IPC) is in the process of being revised to reflect the correct washer.

In addition, a 2" vertical crack was found in the upper end of the spar web near the upper hinge fitting. Both the upper fitting and the hinge pin were loose. The crack

in the spar was not readily visible until the rudder was removed.

Transport Canada Comments:

Viking is in the process of examining the spar web to determine the root cause of the crack on the spar web. Additionally, the OEM will carry out an IPC change to add the correct P/N MS2002 washer to install under NAS 147-29 bolt head. ✖

FIXED WING

BOMBARDIER, CL600 2B19 (RJ440)

SDR # 20091228003

Main Landing Gear Swivel Brake Line Installation

SDR submitted:

During a heavy maintenance visit, while performing brake system bleeding, maintenance personnel found that hydraulic system No.2 was actuating the in-board brake carriers and that hydraulic system No.3 was actuating the out-board brake carriers. As per Aircraft Maintenance Manual (AMM), this was an incorrect configuration.

After research it was noted that the hydraulic lines at the swivel fittings were reversed and were not properly installed on both main landing gears.

All hydraulic lines were re-oriented correctly and the brake system was found serviceable.

The aircraft arrived at the maintenance facility with no abnormalities noticed by the flight crew, however with these hydraulic lines reversed, the aircraft's anti-skid system would have worked opposite to the anti wheel-

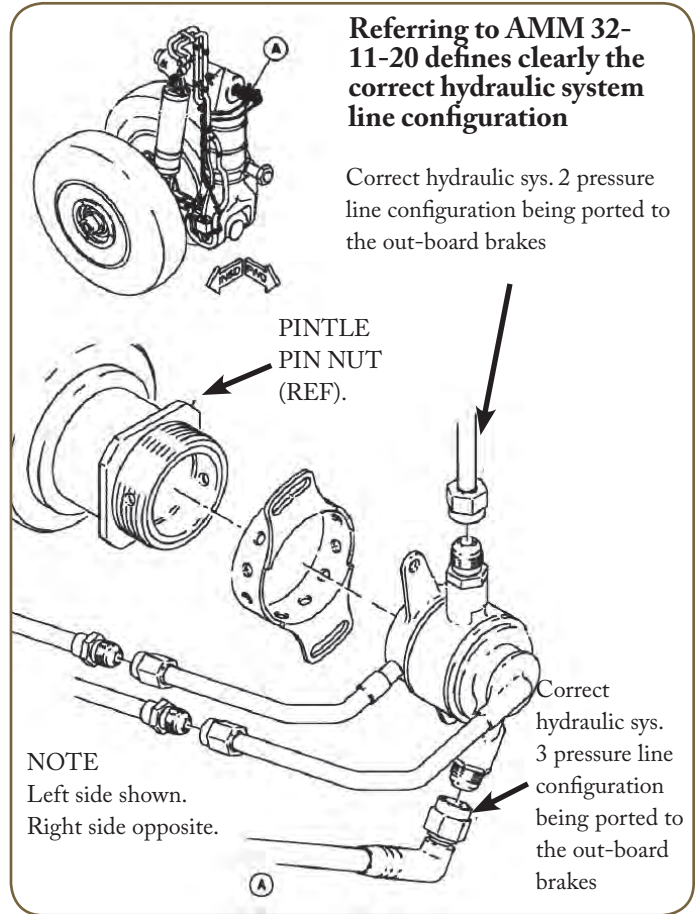
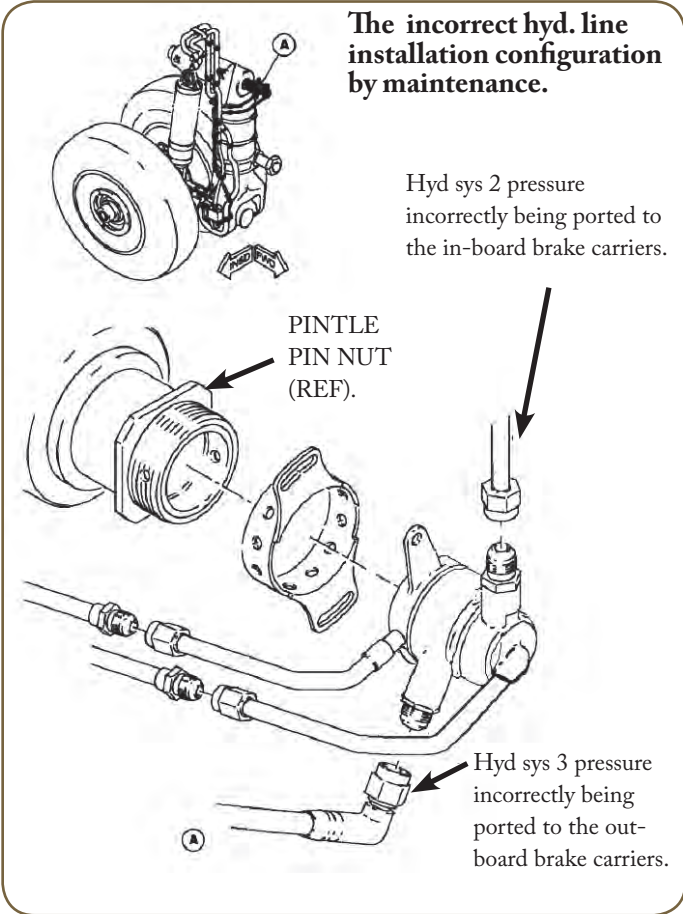
skid requirements and could have severely affected the controllability of the aircraft while landing in wet or bad weather conditions, including the possibility of tire failure.

Transport Canada Comments:

Incorrect hydraulic brake line configuration could potentially have been very serious if it had remained undetected.

The operational task within the AMM removal – installation procedures for these brake swivels, if done correctly, would have detected the incorrectly configured brake line.

Always ensure to follow all AMM task procedures. ✖



Inspection Requirement for the Installation of Serviceable Parts

SDR submitted:

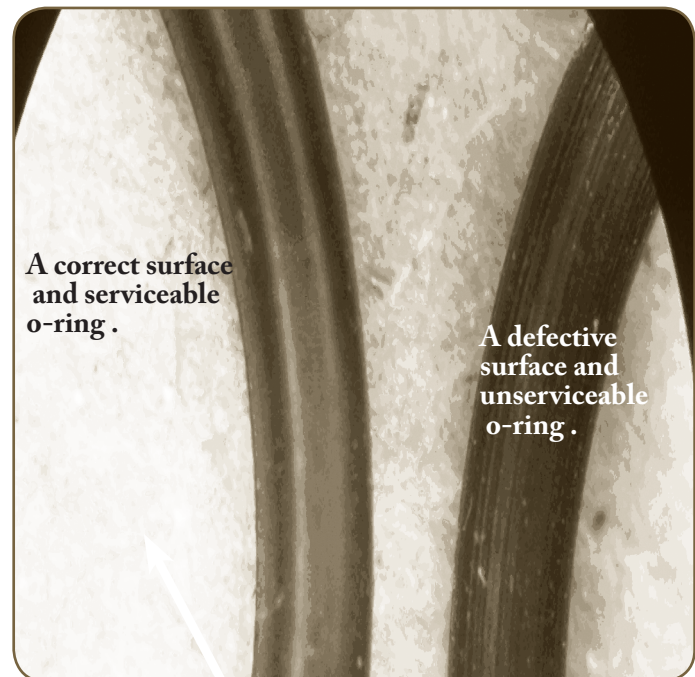
During a heavy maintenance visit on a CRJ100 aircraft, multiple repeated snags for flat and deflated landing gear were raised. While replacing the nitrogen servicing schrader valve o-ring on the gear strut, it was noted by maintenance crew, that the new and old o-ring packings were found with a surface finish defect, causing the MLG gears to loose its gas charge.

A magnified visual inspection of the o-ring surface finish, as seen in the attached figure, confirmed this manufacturer's defect, in comparison to a correctly manufacturer o-ring.

Transport Canada Comments:

Despite mandated quality assurance programs that exist throughout the industry, quality escapes still occur. Therefore it is essential that attention be given to the condition of serviceable parts being installed on aircraft.

✘



Flap Torque Tube - Sheared

SDR submitted:

On final descent to airfield, the flight crew noticed that the “flap drive” caution light illuminated immediately following the specified flap selection.

Following an uneventful landing, the maintenance crew inspected the visible sections of the flap drive train and discovered the R/H #4 flap torque tube had sheared. It appeared that the torque tube had been chafing against one of the flap shroud hangars. The chafing was a result of either an unbalanced torque tube condition, or a slight bend/distortion in the actual torque tube. The chafing was mostly concentrated at approximately 120 degrees of the outside diameter of the torque tube. However, the remaining torque tube wall was paper-thin.

Transport Canada Comments:

It is apparent that this chafing existed for some time. It is essential that proper inspections be carried out with the flaps lowered for proper visual access. ✖



Engine Mount Weld Failures

SDR submitted:

During a letter check inspection, maintenance found on the R/H engine, the upper outboard engine mount sheared off at the firewall attachment point.

The inner attachment bolt was still in place, however the engine support truss tube had separated from the flange or end-cap by a crack of the weld.

The complete engine truss assembly was replaced with a serviceable unit.

There was no snag or indication from the previous flight crew for any form of engine or airframe vibration.

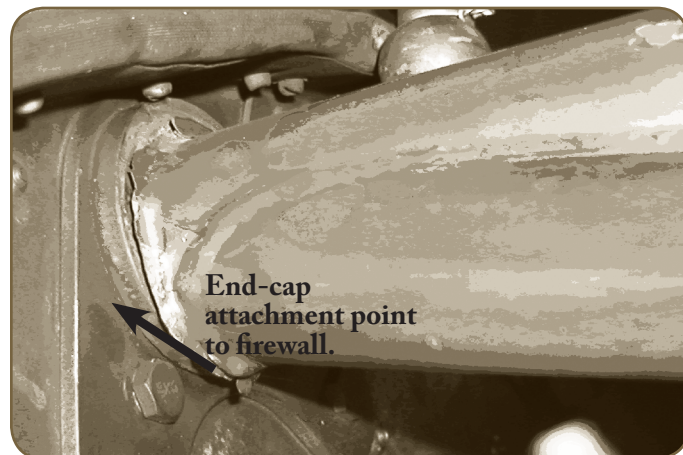
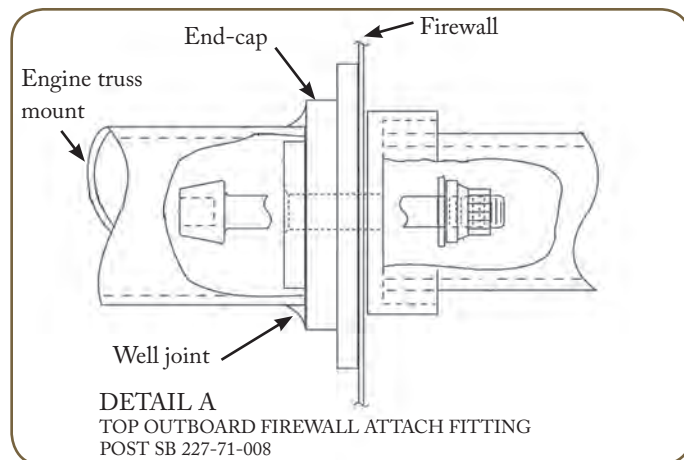
Transport Canada Comments:

The engine truss mount is attached to the firewall at four attachment points. Each point of the mount has an end-cap welded to the truss end with an internal attaching bolt, as seen in detail A.

Failure of this weld could amount to a catastrophic failure of the aircraft.

TCCA would like to bring to the attention of all owners and operators, the importance of a detailed inspection of all engine mounts, especially following a turbulent flight, propeller strike or a hard landing. The Fairchild Service Bulletin 227-71-008 has been raised to address this end-cap fault.

This issue is currently under investigation with TCCA and the FAA. ✖



Horizontal Stab Backlash Wear and Trunnion Bolt Corrosion

SDR submitted:

While maintenance was performing a routine horizontal stab trunnion bolt lube, it was noticed that there was excessive vertical movement (backlash) of the stab at the forward leading edge. A free play check was carried out as per AMM and the measurement was found in excess of the maintenance manual by 0.635 cm (0.250 inches). Upon further investigation, the removal of the bolt assembly was very difficult because of excessive corrosion found. The vertical stab bushings were also heavily worn, which added to the horizontal stabs excessive backlash.

Both sets of bushings and the bolt assembly were replaced and shimmed correctly as per the AMM and the aircraft was released for service.

Transport Canada Comments:

Despite a well-defined and established maintenance program for Fairchild aircraft, maintenance personnel are encouraged to always take note of any amount of backlash found on all flight controls. ✖



GULFSTREAM - ISRAEL, G100, G150, G200

SDR # 20100504004

Aileron PCU Centering Rod Failure

SDR submitted:

During a scheduled "B"- check maintenance visit, the R/H Aileron PCU External Centering Spring Rod was found broken.

The function of this rod is to ensure the Aileron PCU returns to its neutral position (Aileron panel faired at 0) in case of a pilot Aileron control input disconnect. This rod experiences a twisting force when the ailerons are moved and acts as a return spring for the PCU shuttle valve to the neutral position.

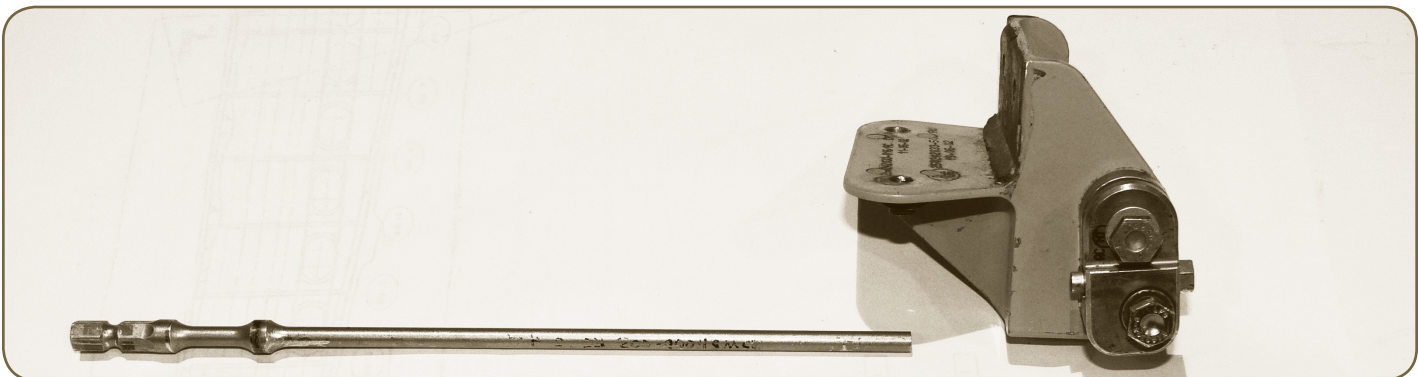
The rod is located in such a position that it would be hard to detect and could go unnoticed until a functional test is carried out or a specific inspection is accomplished.

A new rod was installed with the assistance of Gulfstream and the aircraft was made serviceable.

Transport Canada Comments:

TCCA is advising all operators and owners to inspect the condition of both the aileron PCU and the external centering spring rods.

TCCA is presently working with both the FAA and the CAAI (Continuing Airworthiness Authorities of Israel) to access and address this issue. ✖



Passenger Door – Severe Internal Corrosion

SDR submitted:

Following his last flight of the day, the pilot noticed that the main cabin door structure was coming apart at the location where the door is hinged to the lower fuselage. Further investigation by maintenance personnel revealed severe corrosion of the honeycomb inner door structure. Some rivets that attach the bonded assembly to the door had also failed.

The SDR submitter stated that the older Beech 1900C cabin doors have a steel doubler installed that is riveted and bonded together. This configuration made this particular area difficult to inspect until bulging and/or door skin separation occurred.

Transport Canada Comments:

This specific area of the cabin door is inspected at every 1200 hours. Additionally, model 1900 Airliner Series Corrosion Control Manual, Task 52-10-01, provides further instructions and procedures to detect corrosion.

It is recommended that frequent visual inspections of the area be carried out to detect signs of internal corrosion.

The cabin door is constantly exposed to moisture/dirt contaminants. The constant opening and closing of the door and numerous pressurization cycles further stress/fatigue the integrity of the door structure. ✖



Horizontal/Vertical Stabilizer Interface – Cracked Doubler

SDR submitted:

During a 1200 Hour Scheduled Inspection, a 7.62 cm (3 inches) crack was found on a manufacturer's installed doubler, located at the horizontal/vertical stabilizer tailplane interface. The aircraft was immediately grounded pending further investigation. Maintenance personnel confirmed that all of the screws were properly secured, however several screws still spun freely.

The SDR submitter stated that it appeared that the loose screws might be a result of the 7.62 cm crack.

Transport Canada Comments:

Aerodynamic stresses on the horizontal/vertical stabilizer during flight regime can be significant. Any loose hardware in this area can cause undesirable vibrations during flight. ✖



Elevator Torque Tube - Cracks

SDR submitted:

During major overhaul; the elevator bellcrank torque tube was removed for routine maintenance. Inspection revealed that the bellcrank arms were loose. After removal of the arms, non destructive testing (NDT) inspection revealed cracks on two of the eight taper pin holes.

An earlier SDR also reported a crack which started at the horn attach taper pin and spiraled 270 degrees around the elevator torque tube. In this case, the crack progressed very rapidly since the last inspection that was carried out 82 hours previously.

Transport Canada Comments:

An SDR search revealed several other reports of elongation/wear of elevator bellcrank taper pinholes. It appears that the taper pinholes may have been incorrectly drilled (oversize) during manufacture. To preclude undesirable flutter related problems; it is recommended that owners/operators be attentive to any excess play in the elevator controls.

Transport Canada has advised the responsible foreign airworthiness authorities of these defects. ✖

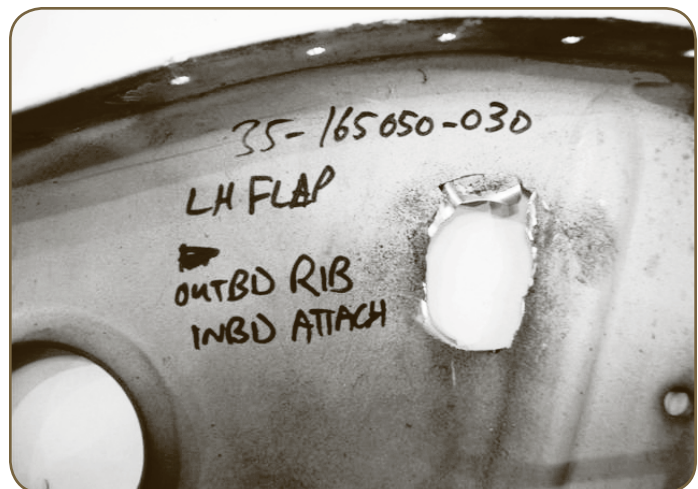
Flap Roller Bearings/Bushings - Wear

SDR submitted:

During descent to the airport, the appropriate flap selection was made when suddenly the flaps stopped and the ailerons became difficult to move. The crew then selected flaps up but no movement occurred. The crew declared an emergency and carried out an uneventful landing at a nearby airfield. It was later found that the aft attachment point on the L/H outboard flap, had failed inside the flap.

During the above failure sequence, the flap actuator continued to drive the flaps until the asymmetrical flap protection system activated thereby removing electrical/hydraulic power from the flaps. Just prior to activation of flap protection system, the flap had pushed the inboard end of the L/H flap further aft (instead of down) which then caused interference with the aileron. The Beech maintenance manual specifies a clearance of 0.4826 cm (0.190 inches) between the flap and aileron; however, the flap was now pushed out of position far enough that contact was made with the inboard trailing edge of the aileron. The flap required minor skin repairs and the inboard and outboard flap ribs were replaced.

The flap is attached through two ribs on either side of the flap track. The flap roller assembly consists of a roller bearing, a large "hat" section and a Teflon washer. All these parts were found to be jammed into the flap track. It became apparent that the "hat" section bushing had been spinning and wearing into the outboard rib until the



material, 1.27 cm (0.50 inches) thick, eventually failed resulting in a jammed flap.

Further inspection revealed that the problem appears to originate with the roller bearings. The BC-56985 bearings are inside the large bushing and premature wear causes the bearing to move inside the bushing. The operator has modified their B300 inspection program to include a specific requirement to inspect this area both on the detailed 800 hour interval and the routine 200 hour interval inspection. A precautionary inspection on their other B300 aircraft revealed similar premature wear.

Transport Canada Comments:

TCCA raised this issue with the FAA and Hawker Beechcraft (HBC) who stated that they have not had

previous reports of this nature, however premature roller wear appears to be the root cause of this event. There is a previous service bulletin to replace the flap rib next to the actuator (not the rib next to the flap track). HBC have stated that the current maintenance instructions are specific on the inspection of this area.

It is important to note that flaps are at times subjected to significant aerodynamic loading (buffeting) during take off, approach and landing; thus it is important to carefully inspect these areas for premature wear and/or damage. It is also essential that flaps and all flight controls be precisely rigged in accordance with manufacturers instructions. ✖

PIPER PA24 250

SDR # 20091109003

Horizontal Stabilator Horn - Cracked

SDR submitted:

A precautionary inspection was carried out on the stabilator horn due to reports of cracking on other aircrafts. No cracks were visible from the horn exterior; however, removal of the 2 stabilator halves, the torque tubes and the horn assembly was necessary in order to inspect the inner wall of the horn.

Close examination with magnification and dye penetrant revealed a crack running from each attachment through a bolthole to the balance tube hole on the forward side of the horn. The crack found in the cast aluminum horn appears to be caused by stress corrosion.

Transport Canada Comments:

Currently, the horizontal stabilator area is the subject of the following FAA Airworthiness Directives (ADs):

- 74-13-01 Stabilator Torque Tube*
- 74-13-03 Stabilator Attachment Bolts*
- 76-19-07 Stabilator Weight Assembly*
- 94-13-10 Stabilator Torque Tube Bearing Support*

In this particular case, the stabilator horn had cracks occurring at the boltholes that may be directly related to FAA AD 74-13-03 (installation of corrosion resistant AN bolts). Any corroded bolts must be changed before further flight. ✖



Main Landing Gear – Retraction Push- Pull Cable Conduit

SDR submitted:

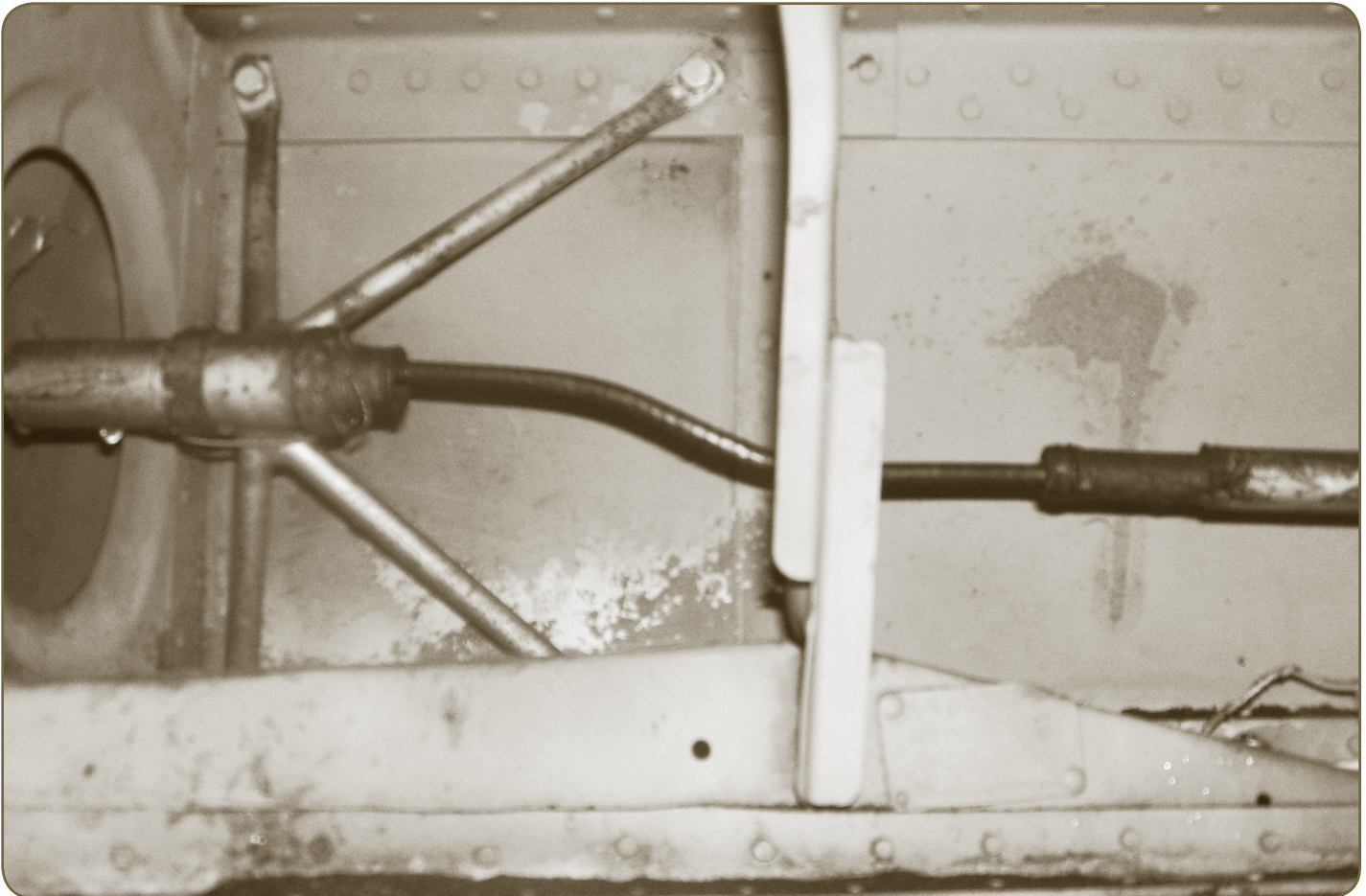
A domestic operator reported that the R/H landing gear collapsed during landing and caused the aircraft to veer off the runway. Subsequent investigation revealed that R/H retraction push-pull conduit was worn between the inner and outer sleeves. Separation of the sleeves did not allow the gear to extend to the full down and locked position. Significant corrosion was also found on the sleeve assembly.

A service history review has revealed numerous problems with the cable conduit assembly resulting in failure of the landing gear to extend fully or retract. Additionally, the retraction motor circuit breaker has popped on numerous occasions, which was directly linked to lack of lubrication of pertinent parts. Other defects such as binding or worn cables have also caused landing gear malfunctions.

Transport Canada Comments:

The electrically powered landing gear is subject to environmental contaminants that promote corrosion, thus it is essential that adequate lubrication and inspections be carried out. Inspect push-pull cables for signs of excess wear, corrosion, freedom of movement and bends and cracks of the threaded ends.

Please also refer to FAA Special Airworthiness Information Bulletin (SAIB) CE-08-50 titled "Landing Gear Manual Extension System Inspection" and Piper Service Letter 782B. These documents emphasize the importance of regular/preventive maintenance. ✖



Aft Upper Fuselage Door

SDR submitted:

Shortly after take off, the crew heard a loud rushing air sound, which was quickly identified as the upper portion of the aft passenger door coming slightly ajar. As the crew was finishing the turning back procedures to the airfield, the upper portion had then become completely open due to inflight aerodynamic forces.

Following flight, the pilot reported obvious metal scarring on the fuselage doorframe, perhaps indicating that both the upper and the lower stair door locking mechanism were engaged prior to flight. Because the cockpit "door unsafe" light never illuminated, this would indicate that the lower portion of the aft door remained secured during this event.

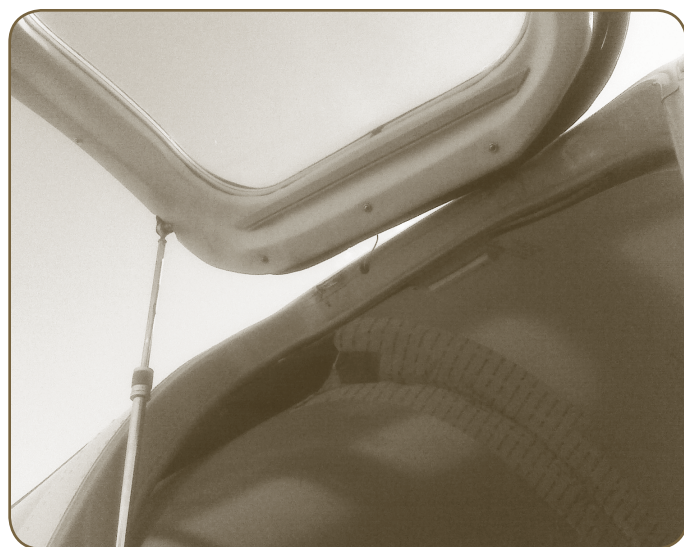
Post flight inspection revealed that the forward aft upper door hinge had failed and separated from the door frame/fuselage interface, just leaving the rear hinge to hold the upper door in place. Because there are several contributing factors related to this event; it is unknown if it was the upper door hinge or the upper door latches that failed first.

Transport Canada Comments:

A review of SDRs revealed other door failures with a complete door separation, which damaged the aircraft during flight. Other door unsafe events were caused because of the worn door latching mechanisms (bushings/springs, latch plates and door cables).

TCCA recommends that owners/operators pay particular attention to premature wear of the door latching mechanisms. Any difficulty in opening, closing or securing the door should be an early indicator of impending failure.

TCCA has reported the above door failure to the FAA for their action with the OEM. ✖



PROPELLERS

Propeller Hub Crack

SDR submitted:

After a flight the crew raised a snag for excessive L/H propeller vibration. Maintenance performed an inspection and found the propeller with a significant crack.

The propeller hub assembly was removed and replaced prior to its next flight.

Transport Canada Comments:

TCCA would like to advise all operators and owners that for any form of vibration, it is essential that the source is found and rectified prior to the next flight.

The propeller overhaul facility and the propeller manufacturer, Dowty UK, are carrying out further investigations. ✖



HEADS UP

Service Difficulty Advisories and Alerts Are Being Consolidated Into Civil Aviation Safety Alerts (CASA)

Currently, Transport Canada distributes aviation safety information to stakeholders through the use of several types of documents, which include Service Difficulty Advisories and Service Difficulty Alerts.

As part of our continuous improvement process, Transport Canada identified a need to consolidate these documents into one single document, now entitled, Civil Aviation Safety Alerts (CASA).

As of the 1st of October, CASAs will replace Service Difficulty Advisories and Service Difficulty Alerts.

CASAs are non-mandatory notifications used to convey important safety information and recommended action items. The information contained in CASAs are critical and will be conveyed to the appropriate recipients in a timely manner. Recipients are then expected to take the recommendations of the CASAs into consideration during ongoing operations and maintenance.

Transport Canada's public website now features a dedicated web page for CASAs:
www.tc.gc.ca/civil-aviation-safety-alert. ✖

EQUIPMENT AIRWORTHINESS DIRECTIVES (ADs)

Transport Canada (TC) endeavours to send copies of new airworthiness directives (ADs), which are applicable in Canada to the registered owners of the affected products. Equipment/appliance ADs are often only distributed to our regional offices because the owners of aircraft affected by this type of AD are not generally known.

AMEs and operators of the affected products are encouraged to obtain further information or a copy of the ADs from their regional TC office, their local TCC, their PMI, or from the Civil Aviation AD website at: www.tc.gc.ca/ca-wis-swimn

MANUFACTURER	AD NUMBER	ORIGIN	DESCRIPTION
ALLIED SIGNALS	2010-12-09	US	Reports of fuel leakage from the fuel control unit (FCU) Inspection of the FCU Differential Pressure (DeltaP) Sleeve Bore
AVOX	2010-11-05	US	Rupture of a high pressure gaseous oxygen cylinder
B/E AEROSPACE	2010-11-05	US	Rupture of a high pressure gaseous oxygen cylinder
GARRETT	2010-12-09	US	Reports of fuel leakage from the fuel control unit (FCU) Inspection of the FCU Differential Pressure (Delta P) Sleeve Borer
HONEYWELL	2010-09-04	US	Flight Management System Software
HONEYWELL	2010-12-09	US	Reports of fuel leakage from the fuel control unit (FCU) Inspection of the FCU Differential Pressure (Delta P) Sleeve Bore
MICROTURBO	2010-0079	EU	ATA 49 - Airborne Auxiliary Power – Auxiliary Power Unit Turbine Wheel Life Limit – Reduction
ROCKWELL COLLINS	2010-0067	EU	ATA 34 - Navigation - Mode S Transponder - Check / Modification
AERONAUTICAL	2010-14-12	US	Aeronautical Accessories Inc. Low Skid Gear Forward Crosstube - Surface Cracking
ONTIC	2010-13-10	US	Propeller governors, part numbers (P/Ns) C210776, T210761, D210760, and J210761

FAA UNAPPROVED PARTS NOTIFICATIONS (UPNs)

Unapproved Parts Notifications are published by: FAA, AIR-140, P.O. Box 26460, Oklahoma City, OK 73125. They are posted on the Internet at: <http://www.faa.gov/avr/sups/upn.cfm>

NUMBER	SUBJECT	DATE POSTED
2010-20091006001	Aero Fab Sales, Yorba Linda, CA, - Sale of surplus aviation stock without Parts Manufacturer Approval	05/18/2010

SUSPECTED UNAPPROVED PARTS (SUPS)

The submitters of the following Service Difficulty Reports (SDRs), indicated that an unapproved part was suspected. The list is provided here for information only and should not be construed as an identification of confirmed unapproved parts.

In Canada, SUPs should be reported in accordance with Canadian Aviation Regulation (CAR) 521, indicating your suspicion of an unapproved part on a regular SDR form or on the Internet at www.tc.gc.ca/wsdrs

MAKE/MODEL	JASC	PART NAME	PART No	PART CONDITION	SDR No.	RGN
<i>AVCO LYCOMING</i>						
IO-540-AE1A5	7414	BEARINGS	22021081806	WORN	20091214009	PAC
<i>BOMBARDIER</i>						
CL600 2B19 (RJ100)	2722	ACTUATOR ASSY	274273	NCORRECT ASSY	20091209001	NCR
<i>GENERAL ELECTRIC</i>						
CT58-140-2	7260, 2000	BEARING	4001T99P03	NEW	20100415004	PAC
CF6-80C2B6F	5620, 2000	ACOUSTIC PANEL	140T24154	2 BREATHING HOLES	20100423002	QUE
<i>KELLY AEROSPACE</i>						
ALU8521	2000	ALTERNATOR	K04016077	SUBSTANDARD PART	20100425001	QUE
<i>LAMAR ELECTRONICS CO.</i>						
B002861	2000		80D28918		20100425004	QUE
<i>PIPER</i>						
	2000	TURBO CLAMP	NH100583410		20100425002	QUE
<i>TELEDYNE CONTINENTAL</i>						
O-470-K-CL	2000	DATAPLATE			20100512007	PNR

FAA SPECIAL AIRWORTHINESS INFORMATION BULLETINS (SAIBs)

A Special Airworthiness Information Bulletin (SAIB) is an information tool that alerts, educates, and makes recommendations to the general aviation community. It is non-regulatory information and guidance that does not meet the criteria for an Airworthiness Directive (AD). <http://www.faa.gov/aircraft/safety/alerts/SAIB/>

SAIB NUMBER	MAKE / COMPANY	SUBJECT	ISSUE DATE
CE-10-36	Rotax	Engine - Replacement of Certain Rotax Fuel Pumps	06/15/2010
CE-10-35	Aircraft	Loose Equipment in the Flight Compartment and on Glare Shields	05/24/2010
CE-10-34	Hawker Beechcraft Corporation	Alternative Methods of Compliance to Airworthiness Directive 89-25-10 and 89-25-08	05/18/2010
CE-10-20R1	Cessna Aircraft Company	Wing Structure - Wingtip Extensions	12/05/2010
CE-10-33	General Aviation	Engine Exhaust	07/05/2010
NE-10-32	Pratt & Whitney Division	Turbine Engine Accessory Drive	07/05/2010
CE-10-31	Gondolas	Fuselage - Free Manned Balloons with Undivided Gondolas	05/05/2010
CE-10-30	Piper Aircraft, Inc.	Landing Gear - Nose Gear Drag Link Bolt	04/05/2010
NE-08-26R2	Lycoming Engines	Magneto/Distributor	04/22/2010
NE-10-28	Turbine Engine Operation	Turbine Engine Operation in Volcanic Ash Airspace	04/22/2010

SERVICE DIFFICULTY REPORTS

The following is a list of SDRs that were submitted to Transport Canada between January 2010 and June 2010. For additional information on these or any other SDR please visit: <http://www.tc.gc.ca/wsdrr>

LEGEND

JASC: Joint Aircraft System Code number defining assembly/system/components
 SDR No.: Transport Canada Civil Aviation (TCCA) -assigned SDR control number — please quote in any correspondence or inquiries

RGN: TCCA region of SDR submitter:
 PAC = Pacific PNR = Prairie and Northern
 ONT = Ontario QUE = Quebec
 ATL = Atlantic NCR = Ottawa (HQ)
 VAR = Various

MAKE/ MODEL	JASC	PART NAME	PART No	PART CONDITION	SDR No.	RGN
AIRCRAFT						
<i>AERO COMMANDER</i>						
500S	5711	SPAR CAP	21000056	CORRODED	20100127016	ONT
<i>AERONICA</i>						
7AC	5310	STRUCTURAL TUBING		RUSTED	20100106003	ONT
<i>AEROSPATIALE</i>						
AS 350	2571	SEAL	SC41	MISSING	20100105003	PNR
AS 350B2	2900	HYDRAULIC PUMP PULLEY	350A35109222	FAILED	20100203008	PNR
AS 350B2	2997	SWITCH	MS2771923	CONTACTS BURNT	20100112002	ONT
AS 350B3	2912	SHIM	813468	USED	20100203009	PNR
AS 350B3	6320	INPUT SEAL	BAUM4SLX760X75X	WORN	20100112005	PAC
AS 350B3	6510	DISK ASSY COUPLING	350A35105901	USED	20100319004	PNR
AS 350B3	7170	VENT TUBE	350A54113800	NEW	20100121004	ONT
ATR 42 300	3246	BOLT	MS2125006038	BROKEN	20100120003	ONT
ATR 42 300	7933	OIL TEMP SENSOR	83161030010	FAILED	20100125009	ONT
ATR 42 320	6130	PROPELLER BRAKE	312089001	OVERHEATED	20100301010	ONT
AS 350B2	2435	STARTER GENERATOR	150SG122Q	SHEARED SHAFT	20100505005	ONT
AS 350B2	2562	ELT	5182250202	FAILED	20100428007	PNR
AS 350B2	2562	ELT	5182250202	FAILED	20100428008	PNR
AS 350B2	2900	HYDRAULIC HOSE	704A34412037	UNSERVICEABLE	20100512003	QUE
AS 350B2	2911	VALVE CAP	10134002800	SEPARATION	20100610006	PNR
AS 350B2	2913	BEARING	593733	SEAL ROTATING	20100603005	QUE
AS 350B2	2913	BEARING	593733	SEAL UNSECURED	20100518001	QUE
AS 350B2	2913	DRIVE COUPLING	S40	DEPARTED	20100406006	PNR
AS 350B2	6220	SPHERICAL STOPS	704A3363321151	RUBBER WORN	20100413015	ONT
AS 350B2	8300	EPICYCLIC	350A32010010	FAILED	20100415005	ONT
AS 350B3	2913	HYDRAULIC PUMP		NOT LUBRICATED	20100426011	PNR
AS 350B3	6420	BUSHING	704A33698019	LOOSE	20100429007	ONT
AS 350BA	6210	MAIN ROTOR BLADE	355A11002009	CRACKED	20100623003	QUE
ATR 42 300	2400	EXTERNAL POWER BUS BAR	S925118472000	BURNT	20100423004	ONT
ATR 42 300	2432	EMERGENCY BATTERY	16566	HOT	20100423007	ONT
ATR 42 300	2730	ELEVATOR CONTROL	2738195300200	STIFF BEARING	20100507014	PNR
ATR 42 300	3231	ROD END	EMJRT952GK	BROKEN	20100504006	ONT
ATR 42 300	5300	SEAL	S53573000202	LEAKING	20100528003	ONT
ATR 42 320	2910	FLEXIBLE HYD LINE	MS27370G012S	LEAKING	20100423003	ONT
SA 315B	6320	MAIN GEAR BOX	319A620000004	UNSERVICEABLE	20100228001	PNR
<i>AIR TRACTOR</i>						
AT 802A	1420	FOAM LEVEL INDICATOR		SHORTED	20100517003	PAC

MAKE/ MODEL	JASC	PART NAME	PART No	PART CONDITION	SDR No.	RGN
AT 802A	5531	VERTICAL FIN		CRACKED	20100608009	PAC
AT 802A	3242	MLG TORQ PLATE		LOOSE	20100223001	PAC
AT 802A	3242	PISTON ASSY		UNSERVICEABLE	20100223004	PAC
AT 802A	5342	BRACKET		CRACKED	20100218010	ATL
<i>AIRBUS</i>						
A319 114	2920	HYDRAULIC SYSTEM	D2907019000600	LEAKING	20100427001	QUE
A320 211	2923	PUMP	767223	LEAKING	20100607001	QUE
A320 211	3200	LANDING GEAR	664700500A4D	FAILED	20100429008	QUE
A330 343	3210	VARIOUS	2014900012	CORRODED	20100402001	QUE
A319 114	2100	AIR CONDITIONING	769A000002	BROKEN	20100330004	QUE
A319 114	2900	YELLOW HYD PRESS LINE	D2905602500000	WORN	20100225002	QUE
A319 114	2910	HYDRAULIC LINE	D2901005201300	WORN	20100329008	QUE
A319 114	5610	WINDOW	STA320271	CRACKED	20100118003	QUE
A320 211	2721	YAW DAMPER SERVO ACTUATOR	SC47003	LEAKING	20100325003	QUE
A320 211	2910	YAW DAMPER	SC47003	LEAKING	20100113005	QUE
A321 211	5610	WINDOW	NP1653115	CRACKED	20100118001	QUE
A330 243	7300	FUEL SUPPLY TUBE	FK25361	CHAFFED	20100119005	QUE
A330 343	5610	WINDOW	NP1752015	CRACKED	20100118004	QUE
<i>AMERICAN VALATION</i>						
AA5	2571	BATTERY BOX	402012505	USED	20100504009	PAC
<i>BAE - (RAYTHEON)</i>						
BAE 125 800A	5600	CIRCUIT BREAKER	6TC14101	FAILED	20100104004	QUE
HS 125 700A	2913	HYDRAULIC PUMP	65WE010303	INCORRECT ASSEMBLY	20100507008	QUE
<i>BAE - UK</i>						
3112	3200	DIODE	1N4007	UNSERVICEABLE	20100429004	PNR
3112	3200	LANDING GEAR		LEAKING	20100511020	PNR
3112	5620	WINDOW	137169C413	UNSERVICEABLE	20100429009	PNR
<i>BEECH</i>						
100	5711	SPAR CAP		CRACKED	20100401007	PAC
1900C	2121	AFT VENT BLOWER	EM6302	OVERHEATED	20100525018	PAC
1900D	3230	RELAY	MS24171D1	STUCK CLOSED	20100408003	ONT
1900D	3260	UP LOCK SWITCH	1003810061	FAILED	20100506004	ONT
1900D	3416	ALTIMETER		FAILED	20100509001	PNR
1900D	5310	L/H HEAVY ANGLE	114-430002-7179	CRACKED	20100621011	ONT
200	2720	HINGE ASSY CENTER RUDDER	10164001423	INCORRECT ASSEMBLY	20100407003	PNR
99	3000	BOOT DE-ICE WING	SMR2014111	CRUSHED	20100429002	PNR
A100	7600	CABLE ASSY	9938000521	SEPARATED	20100617010	ONT
B200	1210	ANTI SIPHON ASSY	10192006137	DAMAGED	20100506006	PNR
B200	3213	PACKING	M83461235	BADLY CUT	20100423005	PNR
B200	3220	BRACKET	508202059	CRACKED	20100528009	PNR
B200	5210	SUPPORT	1014301781	CRACKED	20100527007	PNR
B200	5730	L/H TRAILING EDGE INSTALL	10112002075	CRACKED	20100513007	PNR
B200	7110	DUCT	10191002455	CRACKED	20100511012	PNR
B200	7110	HEATED LIP	10191001641	CRACKED	20100511014	PNR
B300	2810	FUEL CAP	45786221	SERVICEABLE	20100514004	ONT
B300	5610	WIND SCREEN	10138402524	CRACKED	20100615003	ATL
B300	5753	BRACKET INBD HINGE	3516505030	WORN	20100423008	PAC
C90A	3233	SUPPORT	901200606557	CRACKED	20100416005	ONT
C90A	5520	CLIP	505244069	CRACKED	20100406001	ONT
C90A	7110	CHANNEL	10991004528	CRACKED	20100628003	PNR
C90A	7110	HEATED LIP	10991004933	CRACKED	20100628002	PNR
E90	2121	VENT BLOWER MOTOR	EM6039	SEIZED	20100531006	PAC
E90	5210	FRAME FWD	504300431277	CRACKED	20100516005	PNR
E90	5751	SKIN	99130000197	CRACKED	20100516003	PNR
E90	5751	SKIN	99130000199	CRACKED	20100516004	PNR
E90	5751	SKIN	99130000203	CRACKED	20100516002	PNR
E90	5751	SKIN	99130000201	CRACKED	20100516001	PNR
100	5753	FLAP	501600183	FAILED	20100127013	QUE

MAKE/ MODEL	JASC	PART NAME	PART No	PART CONDITION	SDR No.	RGN
1900C	2820	FUEL LINE	1149200041	CHAFFED	20100125008	ATL
1900C	5210	DOOR		DEBONDED	20100203010	PNR
1900C	5330	PLATE/SKIN		CORRODED	20100212003	QUE
1900C	5751	AILERON		CRACKED	20100126003	ATL
1900D	2120	AIR DISTRIBUTION		ARCING	20100204008	ONT
1900D	2910	HYDRAULIC SYSTEM		ARCING	20100309006	ONT
1900D	3210	RELAY	MS24171D1	FAILED	20100108002	PAC
1900D	3260	SWITCH NOSE GEAR DOWN LOC	1003810061	BURNED	20100216015	ONT
1900D	5711	R/H AFT WING SPAR	11412004434	MISSING FASTNERS	20100224009	ONT
200	3320	FLUORESCENT BALLASTS	PWFLC28	OVERHEATED	20100106006	QUE
200	3397	LIGHT SYSTEM WIRING		SHORTED	20100323006	PNR
200	5610	#1 WINDSHIELD	10138402523	CRACKED	20100204010	PNR
200	5610	L/H WINDSHIELD	10138402523	CRACKED	20100202007	QUE
200	5610	R/H WINDSHIELD	10138402524	BROKEN	20100211008	PNR
200	5610	WINDSHIELD	10138402523	CRACKED	20100211001	ATL
76	5730	PLATE		BROKEN	20100119012	PAC
99	7200	ENGINE		FAILED	20100226002	PNR
99A	5710	WASHER ASSY	903800581	INCORRECT PART	20100322005	PNR
A100	2810	FUEL STORAGE		LEAKING	20100118008	QUE
A100	2841	FUEL GAUGE	10038000647	FAILED	20100224010	ONT
A100	3233	YOKE ASSY	508202073	USED	20100218014	PAC
A100	3246	WHEEL MAIN	16218000	CORRODED	20100111006	QUE
A100	5310	FRAME	5042002858	CRACKED	20100208002	ONT
A100	5310	STRINGER	504400145535	CRACKED	20100208004	ONT
A100	5310	TEE ANGLE	991200121112	CRACKED	20100208003	ONT
A100	5415	FITTING	509800891	WORN	20100208005	ONT
A100	5711	WEB L/H REAR SPAR	5011002628	CRACKED	20100209010	PNR
B100	5753	BRACKET		USED	20100127015	QUE
B200	3220	LANDING GEAR		POPPED CB	20100129008	PNR
B200	3230	SELECTOR VALVE	623372	LEAKING	20100330003	PNR
B200	3260	DOWN LOCK SWITCH	1003810061	BURNT	20100324013	PNR
B200	5230	FWD DOOR FRAME		SHEARED RIVETS	20100107008	PNR
B200	5312	BULKHEAD	1014302853	CRACKED	20100107007	PNR
B200	5610	WINDSHIELD	10138402523	CRACKED	20100127005	PNR
B200	7110	SKIN/DUCT	10191004911	CRACKED	20100107006	PNR
B200	7250	COMPRESSOR TURBINE BLADE	312313102	CRACKED	20100310007	PNR
B200	7712	TORQUE INDICATOR		ARCING	20100216016	PNR
B300	3210	LANDING GEAR		DAMAGED	20100216011	ATL
B300	5210	DOOR SEAL	5043006127	CUT	20100127017	PNR
B300	5311	CROSS TIE	974300000149	CRACKED	20100212004	PAC
C90	3221	SKIN INNER		CRACKED	20100218005	PNR
C90	3251	STEERING LINK TUBE	508201892	CORRODED	20100329010	PNR
C90	5753	FLAP PROTECTOR		MISSING	20100320001	PNR
C90	7261	SECONDARY FILTER		DAMAGED	20100309002	ONT
C90A	7110	DUCT INTAKE		CRACKED	20100108001	PNR
C90A	7261	CONICAL SECONDARY FILTER		SPLIT	20100303002	ONT
C90A	7261	SECONDARY FILTER		DAMAGED	20100309001	ONT
C90A	7280	SECONDARY FILTER		DAMAGED	20100302003	ONT
C90A	7280	SEDONDARY FILTER	307097601	DAMAGED	20100302002	ONT
C90A	7310	TUBE ASSY	1099200021	CRACKED	20100126004	PAC
E90	5330	SKINS	501201568182	CRACKED	20100218012	PNR
E90	5330	SKINS	504200111051	CRACKED WORN	20100218013	PNR
<i>BELL TEXTRON - CAN</i>						
206B	3210	SKID TUBE ASSY R/H	206321252	CRACKED	20100303006	PAC
206B	5310	WEB	206031200019	CRACKED	20100304003	PNR
206B	6730	SERVO ACTUATOR	206076031013	LEAKING	20100325002	PNR
206B	7931	TUBE ASSY (OIL PRESSURE)	206070445001	CHAFED	20100111003	PNR
206B 3	6310	CLUTCH	CL422501	BROKEN	20100322006	PAC

MAKE/ MODEL	JASC	PART NAME	PART No	PART CONDITION	SDR No.	RGN
206L	6520	SCREW	206040323003	CRACKED	20100315004	ONT
206L 1	3340	LANDING LIGHT ASSY	206075303	MELTED	20100326006	PNR
407	5301	BEARPAW	D407559113	CRACKED	20100218015	PAC
407	5344	FIREWALL FORWARD		WORN	20100107009	PNR
407	5412	WEB		CRACKED	20100107010	PNR
407	6210	TRIM TAB	406015037129	CRACKED	20100118002	ATL
206B	5310	BOX BEAM LOWER WEB	206031200019	CRACKED	20100517005	PAC
206B	5321	BAGGAGE FLOOR	206031313115	CORRODED	20100622017	PNR
206L	6310	CLUTCH	CL422501	SEIZED	20100430004	ONT
206L 1	2842	LOW FUEL WARNING SWITCH	2060636133	UNSERVICEABLE	20100527006	PNR
206L 1	6510	STEEL SHAFT	206040325017	BENT	20100621003	ONT
206L 3	5302	TAILBOOM ATTACH FITTING	206032409001	SMOKING RIVETS	20100422004	PNR
206L 4	6310	DUPLEX BEARING	406040531103	CHIPPED	20100610004	ONT
222U	6210	M/R BLADE	2220156001XX	DELAMINATED	20100603003	QUE
407	0	AFT CROSS TUBE	D407667205	BROKEN	20100612001	ONT
407	6210	BOLT	406010120101	CRACKED	20100609003	QUE
407	6210	M/R BLADE	407015001137	CRACKED	20100429011	PAC
407	6210	ROTOR BLADE	407015001129	DELAMINATED	20100505001	ATL
407	6320	MAIN ROTOR MAST BEARING	406040036107	FAILED	20100607006	PNR
412CF	2910	HYDRAULIC LINE	212076433001	CRACKED	20100602001	QUE
429	5610	CREW WINDOW R/H	429330831104	LOST	20100413013	QUE
412CF	2900	TUBE ASSY	212076433001	CRACKED	20100324020	PNR
429	6210	ABRASION STRIP	429015004103	NEW	20100324012	QUE
BELL TEXTRON - USA						
205	5430	DOOR POST PANEL	205	DOES NOT FIT	20100119006	PAC
204	7921	BEARING	P9103PPFS381A	UNSERVICEABLE	20100607005	PAC
212	6320	DRIVE QUILL	212040365	CRACKED	20100430007	PAC
212	6320	MAIN TRANSMISSION	212040001059	CHIP LIGHT	20100505007	PAC
212	3210	CROSSTUBE	212320104	BROKEN	20100223002	PAC
212	6210	BLADE	212015501115	CRACKED	20100209012	PAC
212	6300	MAIN DRIVESHAFT	212040005103	DISCOLORED	20100119013	PAC
212	6420	CROSSHEAD ASSY	212010775001	WORN	20100216013	PAC
212	6510	COUPLING	204040604005	WORN	20100208006	PAC
BOEING						
720 023B	5343	R/H A FRAME		ORIGINAL	20100216017	QUE
727 227	2751	POSITION INDICATOR	H1010262	FAILED	20100201003	PAC
727 225	3242	PIN ADJUSTER	20487	MISSING	20100625005	ONT
727 227	2150	AIR SHUT OFF VALVE	56697	UNSERVICEABLE	20100505010	PAC
727 247	2750	BOLT ASSY	692118919	SHEARED	20100622024	PNR
727 247	7722	EGT INDICATO	152BL801C	FLUCTUATED	20100518003	PNR
737 217	7260	GEARBOX	717000	OVERHAULED	20100526002	PNR
737 275C	5340	SHEAR TIES		CORRODED	20100517002	PNR
737 2R8C	3610	CHECK VALVE	255304	LEAKING	20100507005	ONT
737 46B	2210	MODE CONTROL PANEL	4051601932	FAILED	20100605001	PAC
737 4B3	3246	INBOARD NOSE WHEEL HALF	AHA1316	CRACKED	20100427010	PAC
737 7CT	2520	CAPACITOR C		FAULTY	20100615007	PNR
737 8CT	2520	CAPACITOR-BN#0839 KEMET		BURNED	20100615006	PNR
737 8CT	3150	AURAL WARNING	69782144	UNSERVICEABLE	20100519006	PNR
747 SPJ6	3411	STAND-OFF	BACN10GH3A10	BROKEN	20100521003	QUE
767 35H	5620	WINDOW ACOUSTIC PANEL	140T24154	2 BREATHER HOLES	20100423002	QUE
777 233LR	2520	SOCKET	415022	BURNT	20100416002	QUE
777 333ER	7200	DMS/CHIP DETECTOR		DEBRIS	20100416001	QUE
727 231	2720	SPRING	69253642	BROKEN	20100205001	ONT
727 243	7930	PRESSURE SWITCH	1163P181	FAULTY	20100223006	PAC
737 200C	5230	BELLCRANK ASSY	65622161	BROKEN	20100121008	ONT
737 217	2400	ELECTRICAL SYS	915F212	SMOKING	20100215002	PNR

MAKE/ MODEL	JASC	PART NAME	PART No	PART CONDITION	SDR No.	RGN
737 217	7230	TIE BOLT	821209	BROKEN	20100226007	PNR
737 275	5753	SPINDLE	654648195	CRACKED	20100104005	PNR
737 2R8C	2100	PACK FLOW CONTROL VALVE	39613211SN391	FAULTY	20100324009	ONT
737 7CT	5610	WINDOW	5893543140	CRACKED	20100104002	PNR
737 8AS	2600	CONNECTOR	BACC63BP20C16SN	SHORTED TO GND	20100323002	ATL
737 8AS	2750	BOLT	BACB30NR4DK14	MISSING	20100216012	ATL
737 8CT	3244	TIRE	26123111	RETREADED R3	20100104006	PNR
767 223	7830	LINE	272T3100423	BROKEN	20100315003	ONT
767 375	3010	THERMAL ANTI-ICE DUCT	14A23421	DAMAGED	20100126002	QUE
777 233LR	3520	COUPLER	CA6210656GRN	NOT INSTALLED	20100312001	QUE
777 233LR	3520	OXYGEN LINE		PINCHED	20100318010	QUE
777 233LR	7120	BUSHING		MIGRATION	20100326001	QUE
777 233LR	7120	BUSHING		MIGRATION	20100326002	QUE
777 333ER	3520	LINE (HOSE)		PINCHED	20100324018	QUE
777 333ER	7310	FUEL DISTRIBUTION		WORN	20100119003	QUE
777 333ER	7310	FUEL DISTRIBUTION		DAMAGED	20100119004	QUE
BOMBARDIER						
BD 100 1A10	2612	FIRE DETECTION	4741121	FAULTY	20100105004	QUE
BD 100 1A10	2910	HYDRAULIC TUBE	1005354233007	CHAFFED THRU	20100326003	QUE
BD 700 1A10	2420	AC SYSTEM	GL45611017	FAILED	20100121009	QUE
CL600 2B19 (RJ100)	0	SURROUND FRAME	601R350279	CRACK	20100305004	ATL
CL600 2B19 (RJ100)	0	T-FITTING	601R352111	CRACK	20100305003	ATL
CL600 2B19 (RJ100)	2130	CABIN PRESSURE CONTROLLER	21197688	FAILED	20100104007	QUE
CL600 2B19 (RJ100)	2400	ELECTRICAL SYS		FAILED	20100129003	QUE
CL600 2B19 (RJ100)	2611	SMOKE DETECTOR	PU90421R3	MUSTY SMELL	20100129004	QUE
CL600 2B19 (RJ100)	2750	BPSU	855D10015	FAILED	20100128001	QUE
CL600 2B19 (RJ100)	2750	FECU	860D10018	FAILED	20100129001	QUE
CL600 2B19 (RJ100)	2750	FLAP CONTROL	8004403	FAILED	20100311002	ATL
CL600 2B19 (RJ100)	2750	WIRE		BROKEN	20100223005	ATL
CL600 2B19 (RJ100)	2822	GUIDE VALVE	218423	MISSING	20100226003	ATL
CL600 2B19 (RJ100)	3150	CENTRAL WARNING		FAULTY	20100128008	QUE
CL600 2B19 (RJ100)	3210	PACKING O-RING	MS28775015	NITROGEN CHARGING	20100330001	QUE
CL600 2B19 (RJ100)	3231	BASE ASSY MOUNTING	6008610425	CRACKED	20100329009	ATL
CL600 2B19 (RJ100)	3320	LIGHT ASSY	BC10065003	BURNT	20100317003	ATL
CL600 2B19 (RJ100)	5210	SHOULDER BOLT	601R3864117	BROKEN	20100121003	ATL
CL600 2B19 (RJ100)	5310	FRAME		CRACKED	20100316004	ATL
BD 100 1A10	1200	NO PARTS		IMPACTED	20100430005	QUE
BD 100 1A10	2430	DC GENERATING SYSTEM	970GC02Y04	FAILED	20100616001	QUE
BD 100 1A10	2550	HEATER MAT	COXPN343605	DISCOLORED	20100608013	QUE
BD 100 1A10	2750	BOLT	NAS62039H	BROKEN	20100519007	QUE
BD 100 1A10	2750	BOLT	NAS62039H	SHEARED	20100531008	QUE
BD 100 1A10	3110	INSTRUMENT PANEL	975GC02Y05	FAULTY	20100531003	QUE
BD 100 1A10	7250	TURBINE	AS90711A	DAMAGED	20100621009	QUE

MAKE/ MODEL	JASC	PART NAME	PART No	PART CONDITION	SDR No.	RGN
BD 700 1A10	0	TAIL CONE ASSY		DAMAGED	20100506001	QUE
CL600 2B19 (RJ100)	2360	LIGHTTING PROTECTION STIP	DSC7400672RH	CORODED	20100617005	ATL
CL600 2B19 (RJ100)	2460	DC POWER DIST	MS22073712	FAULTY	20100414003	ATL
CL600 2B19 (RJ100)	2731	SHEAR PIN	601R24063953	SHEARED	20100507002	ATL
CL600 2B19 (RJ100)	2750	BPSU	855D10013	FAILED	20100607004	ATL
CL600 2B19 (RJ100)	2820	FUEL LINE	3883449	WORN	20100412012	ATL
CL600 2B19 (RJ100)	3220	LANDING GEAR		FAILED	20100529002	QUE
CL600 2B19 (RJ100)	3231	NLG DOOR SELECTOR VALVE	601R751461	UNSERVICEABLE	20100623006	ATL
CL600 2B19 (RJ100)	4900	APU	38004883	FAILED	20100413004	ATL
CL600 2B19 (RJ100)	5230	CARGO DOOR SURROUND FRAME	601R3502757	CRACKED	20100407002	ATL
CL600 2B19 (RJ100)	5230	INTERCOSTAL MEMBER	601R3502731	CRACKED	20100429003	ATL
CL600 2B19 (RJ100)	5310	FUSELAGE		CRACKED	20100610002	ATL
CL600 2B19 (RJ100)	5324	MLG MOUNTING TRUNION	601R10068	CRACKED	20100409003	ATL
CL600 2B19 (RJ100)	5330	PLATE/SKIN		DAMAGED	20100604002	ATL
CL600 2B19 (RJ100)	5610	WINDOW	601R3303317	CRACKED	20100511019	QUE
CL600 2B19 (RJ100)	7110	R/H FRONT COWL	22850081142	DAMAGED	20100604001	ATL
CL600 2B19 (RJ100)	7230	COMPRESSOR	6089T11G01	DAMAGED	20100604007	QUE
CL600 2B19 (RJ100)	7300	MAIN FUEL CONTROL UNIT	6078T55P25	FAULTY	20100414002	QUE
CL600 2C10 (RJ700)	5610	WINDOW SIDE (L/H)	NP13932211	SHATTERED	20100529001	QUE
CL600 2D15 (705)	2340	PA HANDSET	55831	FAILED	20100405003	ATL
CL600 2D15 (705)	2460	DC POWER DIST	E520003702	FAULTY	20100512001	ATL
CL600 2D15 (705)	2751	SKEW DETECTOR	5913163	FAILED	20100609005	ATL
CL600 2D15 (705)	2761	SPOILER PCU	5120011	JAMMED	20100621007	ATL
CL600 2D15 (705)	3240	MULTIFUNCTIO LANDING GEAR BRAKE	6007300	FAULTY	20100528004	ATL
CL600 2D15 (705)	3320	BALLAST	BR9500106	BURNT INTERNALLY	20100608017	ATL
CL600 2D15 (705)	5610	WINDSHIELD	601R3303321	CRACKED	20100405002	ATL
CL600 2D24 (RJ900)	2433	TRANSFORMER RECTIFIER	TRU21001B176	FAULTY	20100414001	QUE
CL600 2B19 (RJ100)	5312	FRAME DOUBLER	601R3600234	CRACKED	20100202004	ATL
CL600 2B19 (RJ100)	5341	ANGLE	601R31058227	CRACKED	20100219009	ATL
CL600 2B19 (RJ100)	5610	L/H SIDE WINDOW	NP13932211	CRACKED	20100101001	QUE
CL600 2B19 (RJ100)	5610	R/H WINDOW	601R3303312	CRACKED	20100205009	QUE
CL600 2B19 (RJ100)	5610	SIDE WINDOW	601R3303312	CRACKED	20100114003	ATL
CL600 2B19 (RJ100)	5610	WINDOW	NP13932210	CRACKED	20100205007	QUE

MAKE/ MODEL	JASC	PART NAME	PART No	PART CONDITION	SDR No.	RGN
CL600 2B19 (RJ100)	5610	WINDOW	601R3303310	CRACKED	20100128007	QUE
CL600 2B19 (RJ100)	5610	WINDOW	601R3303317	SHATTERED	20100104008	QUE
CL600 2B19 (RJ100)	5610	WINDOW SIDE (L/H)	NP13932211	SHATTERED	20100101002	QUE
CL600 2B19 (RJ100)	5610	WINDOW SIDE (R/H)	NP1393226	CRACKED	20100313001	QUE
CL600 2B19 (RJ100)	5610	WINDSHIELD	601R3303318	CRACKED	20100313002	QUE
CL600 2B19 (RJ100)	5700	ANGLE	6001020428	CRACKED	20100222005	ATL
CL600 2B19 (RJ100)	7200	ENGINE		FAILED	20100215004	QUE
CL600 2B19 (RJ100)	7300	THROTTLE CABLE	1603730003	BROKEN	20100107001	QUE
CL600 2B19 (RJ100)	7500	CF34-3A1		SMOKE	20100129002	QUE
CL600 2C10 (RJ700)	5610	WINDSHIELD	NP13932112	CRACKED	20100205008	QUE
CL600 2D15 (705)	2130	PIANO HINGE		WORN OUT	20100322002	ATL
CL600 2D15 (705)	2133	PIANO HINGE	BA690951031	WORN OUT	20100122002	ATL
CL600 2D15 (705)	2520	WIRE		SHORTED	20100324008	ATL
CL600 2D15 (705)	5210	ICE BREAKER CABLE	601R3181273	BROKEN	20100329005	ATL
<i>CANADAIR</i>						
CL215 1A10	2770	BRACKET	215925296	CORRODED	20100128002	PNR
CL215 1A10	3242	BRAKE ASSY	211333	OVERHAULED	20100519005	ATL
CL215 1A10	3244	TIRE	31231	UNSERVICEABLE	20100427005	PAC
CL215 1A10	5320	ANGLE	2153103656	DAMAGED	20100408005	PAC
CL215 1A10	5330	AIRCRAFT SKIN	21530027116	CRACKING	20100518004	PNR
CL215 6B11(CL215T)	5711	WING SPAR		CRACK	20100422007	QUE
CL215 6B11(CL415)	2000	AIR CONDITIONNING BLOWER	41502521	SMOKING	20100616002	QUE
CL215 6B11(CL415)	2910	HYDRAULIC SYSTEM		FAULTY	20100423001	QUE
CL215 6B11(CL415)	2911	ACCUMULATOR	88423010	CRACKED	20100617009	QUE
CL215 6B11(CL415)	5310	UPPER FUSELAGE FRAME	21531061	CRACKED	20100429006	QUE
CL215 6B11(CL415)	5330	HULL SKIN	215300174	CRACKED	20100401005	QUE
CL600 2A12(601)	2742	BEARING PIN	6009230167	INTERNAL FAILURE	20100422001	NCR
CL600 2A12(601)	5310	ANGLE	60032014102	CRACKED	20100408004	QUE
CL600 2B16(601 3R)	3452	XPDR ANTENNA	6226591001	LOOSE	20100526004	ONT
CL600 2B16(604)	2913	HYDRAULIC PUMP	601R751135	OVERHEATED	20100510003	QUE
CL600 2B16(604)	3110	DISPLAY CONTROL PANEL	8222165002	FAULTY	20100507009	PAC
CL600 2B16(604)	3241	TIRE	276970	WORN THRU CORD	20100511008	ONT
CL600 2B16(604)	7200	ENGINE		FAILED	20100514003	QUE
CL600 2B16(604)	7300	FCU	6078T55P24	FAULTY	20100507004	QUE
CL215 1A10	5343	ATTACH FITTINGS		CRACKED	20100119010	PAC
CL215 1A10	5711	SPAR CAP	2151003268	NEW	20100310003	ATL
CL215 6B11(CL415)	2820	TUBE ASSY	215T6415046	CORRODED	20100324021	QUE
CL215 6B11(CL415)	3244	L/H MAIN WHEEL BEARINGS	LM814849AND395	UNSERVICEABLE	20100324011	QUE
CL215 6B11(CL415)	5330	UPPER FUSELAGE FRAME	21531061	CRACKED	20100308001	QUE

MAKE/ MODEL	JASC	PART NAME	PART No	PART CONDITION	SDR No.	RGN
CL600 2B16(601 3A)	2900	LIGNE HYDRAULIQUE PRESSUR	60075123109	FISSURE	20100126006	QUE
CL600 2B16(604)	3070	DE-ICE SYSTEM	115677114	FAILED	20100119002	ONT
CL600 2B16(604)	7300	THROTTLE ACTUATOR ROD	113510512	UNSERVICEABLE	20100216009	ONT
<i>CANADIAN CAR</i>						
HARVARD IV	5511	SPAR CONNECTOR FITTI	77121021	WORN	20100608011	ONT
<i>CESSNA</i>						
152	8520	ENGINE CASE	LW13282	CRACKED	20100204006	PNR
172H	2701	CONTROL YOKE	51178216	CORRODED	20100305002	PNR
172K	2701	CONTROL YOKE	51178217	CORRODED	20100324015	QUE
172K	3220	TORQUE LINK- UPPER	4425061	CRACKED	20100303003	ONT
172M	5540	LOWER HINGE BRACKET	5310181	CRACKED	20100222001	ONT
172N	3340	LIGHTING		CRACKED	20100127008	ONT
172N	3340	LIGHTING		FAILED	20100329006	PNR
172N	3340	WIRING		SEVERED	20100115001	ONT
172N	3710	VACUUM PUMP	CC215	FAILED	20100104003	PNR
172N	7414	BREAKER POINTS	AB10382585	WORN	20100208007	ONT
172P	5520	ELEVATOR		DETACHED	20100315005	ONT
172P	6113	SPINNER BULKHEAD	5503214	CRACKED	20100205003	PAC
172P	8100	MUFFLER	S000127B3	CRACKED	20100205002	PAC
172RG	3233	MAIN GEAR ACUTATOR	98820152	CRACKED	20100218009	ONT
172S	3340	LIGHTING	CM358910	FAULTY	20100222003	ONT
180J	2730	LOWER CABLE LINK	7612022	CORRODED	20100203011	PNR
180J	5310	STIFFENER	7116972	BROKEN	20100205004	PNR
208	3210	BEAM TRUSS	8A02057002	CORRODED	20100311004	PAC
208	5710	HIGH SHEAR RIVET COLLAR	NAS528A6	LOOSE	20100202008	PNR
208	5753	COUPLING	C3010010211	BROKEN	20100121007	ONT
208	7280	OIL FILTER	3059258	UNSERVICEABLE	20100112003	ONT
208B	2750	FLAP BELLCRANK	26222811	CRACKED	20100323007	PNR
208B	5710	ATTACH FITTING	2622246201	IMPROPER SIZE HOLE	20100127007	ONT
208B	7280	OIL FILTER	305925801	UNSERVICEABLE	20100112004	ONT
208B	7920	HOSE	AE366316K06	NEW	20100219007	ONT
208B	7920	OIL FILTER	305925701	SEPARATED	20100127006	ONT
210L	3210	TERMINAL END ON DIODE	12707171	SHORTED	20100116001	PNR
210R	3220	STFFENER L/H	12138011	CRACKED	20100308003	ONT
310R	3210	TORQUE TUBE ASSY	50450103233	REPAIRED	20100323001	QUE
337B	5711	WEB-INBOARD	14225007	CRACKED	20100127014	ONT
550	2913	SWICH-PRESSURE	38581501	USED	20100326004	ONT
550	3210	R/H & L/HTRAILING LINK	65414352	CORRODED	20100211006	PAC
560	2740	TRIM SWITCH	3094318	BROKEN ACTUATOR	20100223003	PNR
560XL	5610	WINDOW		SHATTERED	20100218001	PNR
560XL	7931	OIL PRESSURE TRANSMITTER	99124641	OUT OF TOLERANCE	20100323005	PAC
680	2100	COOLING TURBINE	22066101	FAILED	20100211007	PAC
750	2100	AIR CONDITIONING		SEIZED	20100219010	ONT
A185E	8011	STARTER SOLENOID	111138D	NEW	20100224012	PAC
A185E	8011	STARTER SOLENOID	111138D	NEW	20100224013	PAC
TU206G	2434	DC GENERATOR ALTERNATOR		FAILED	20100114004	ONT
150H	2750	FLAP MOTOR	C3010010201	UNSERVICEABLE	20100415002	PNR
150M	0	SWITCH	C9065	UNSERVICEABLE	20100621016	ONT
152	2752	FLAP ACTUATOR		WORN	20100528010	ONT
152	5553	BRACKET (R/H)	4310093	CRACKED	20100505008	QUE
152	7120	ENGINE MOUNT	45100336	BROKEN	20100601004	QUE
172	8011	STARTER DRIVE	EBB131A	INOPERABLE	20100507011	ONT

MAKE/ MODEL	JASC	PART NAME	PART No	PART CONDITION	SDR No.	RGN
172M	0	SWITCH	C9065	UNSERVICEABLE	20100621013	ONT
172N	2434	ALTERNATOR	DOFF10300BR	FAILED	20100621017	PNR
172N	2720	RUDDER CONTROL		WORN	20100426009	PNR
172N	2810	FUEL TANK	52600750	CRACK	20100505003	PNR
172N	5510	SKIN-STABILIZER CENTER	53200123	ORIGINAL	20100426007	PNR
172N	5753	FLAP ROLLER	523919	BROKEN	20100428005	PNR
172P	0	SWITCH	S21604	UNSERVICEABLE	20100621015	ONT
172P	2701	CONTROL COLUMN		RUSTED	20100429005	PAC
172P	2701	CONTROL COLUMN		RUSTED	20100429010	PAC
172P	2701	CONTROL YOKE		RUSTED	20100401008	PAC
172P	2720	RUDDER CONTROL		WORN	20100426010	PNR
172P	3243	PISTON	98820105	BROKEN	20100615009	PAC
172P	5510	SKIN-STABILIZER CENTER	53200123	ORIGINAL	20100426008	PNR
172P	6113	BULKHEAD SPINNER FORWARD	5503215	CRACKED	20100607007	PAC
172P	7810	MUFFLER	S000127B3	CRACKED	20100527002	PAC
172R	2434	ALTERNATOR		FAILED	20100510005	PNR
172R	2434	ALTERNATOR		SHORTED	20100618001	PNR
172RG	8530	CYLINDER		BROKEN	20100416003	ONT
182B	5347	SEAT STOP CABLE	50530405	BROKEN	20100408006	PAC
208	2820	FUEL HOSE	S518	WORN	20100617011	ONT
310R	3210	L/H MLG IDLER BELLCRANK	8411065	BROKEN	20100423010	PNR
421C	5340	ENGINE BEAM	505402019	USED	20100420002	QUE
421C	7120	AFT ENGINE BEAM	505403034	CRACKED	20100507006	ONT
441	2100	TURBINE	73838415	IN SERVICE	20100412009	PNR
550	2197	SWITH	41EN496	FAULTY	20100614002	ONT
550	3220	LANDING GEAR		FAILED	20100525016	ONT
680	1200	DE-ICING		FAULTY	20100407009	PNR
750	2810	PANEL	67220381	NEW	20100504007	ONT
A152	5553	BRACKET (L/H)	4310093	CRACKED	20100505009	QUE
A185F	2910	CAP AND AFT	21A07237002	CRACKED	20100608016	QUE
A185F	2910	HOSE	30A090000268	CORRODED	20100608015	QUE
U206B	3250	LANDING GEAR		CRACKED	20100601001	PNR
U206F	3242	BRAKE DISCS	C30388	CRACKED	20100622022	PNR
U206G	2421	AC ALTERNATOR		LOOSE	20100616005	PAC
U206G	3211	FITTING MAIN LANDING GEAR	12116012	CRACKED	20100423006	PNR
U206G	5312	BULKHEAD	12534095	CRACKED	20100516006	PNR
<i>CIRRUS</i>						
SR22	8120	TURBO CHARGER	4663040003	LEAKING	20100507003	PNR
<i>CONNAIR</i>						
FIRECAT	2430	DC GENERATING SYSTEM	30E073D	BROKEN	20100604006	PAC
TURBO FIRECAT	2720	SOLENOID ASSY HIGH TEMP	29960	REPAIRED	20100114002	PAC
<i>CONVAIR - CAN</i>						
340	2910	HYDRAULIC FLOW REGULATOR	196S8225	BROKEN IN TWO	20100528008	PNR
340	3246	NOSE WHEEL WHEEL HALF	9531548	CORRODED	20100427007	PAC
340	3260	MICRO SWITCH	BZE7RNT1	FAULTY	20100401001	PAC
580	5523	ELEVATOR TAB BRACKET	90150573	GOOD	20100413003	ONT
<i>DASSAULT</i>						
FIRECAT	2430	DC GENERATING SYSTEM	30E073D	BROKEN	20100604006	PAC
TURBO FIRECAT	2720	SOLENOID ASSY HIGH TEMP	29960	REPAIRED	20100114002	PAC

MAKE/ MODEL	JASC	PART NAME	PART No	PART CONDITION	SDR No.	RGN
<i>DEHAVILLAND - CAN</i>						
DHC 2 MKI	2730	ELEVATOR BEARING	C2CF281	CRACKED HOUSING	20100324022	PAC
DHC 2 MKI	2730	ROD ASS ELEVATOR	C2CF619A8	CORRODED	20100217001	PAC
DHC 2 MKI	5230	L/H HINGE ASSY	C2FS1253A	CORRODED	20100119015	PAC
DHC 2 MKI	5347	R/H SEAT SUPPORT	C2FF1160	UNSERVICEABLE	20100115007	PAC
DHC 2 MKI	5510	FORWARD SPAR	C2TP57N	CRACKED	20100204004	PAC
DHC 2 MKI	5520	ROOT RIB BOLT RETAINER	EE1	CORRODED	20100329011	PAC
DHC 2 MKI	5711	FUSELAGE REAR SPAR ATT	C2FS5471A	CORRODED	20100108008	PAC
DHC 2 MKI	5712	RIB FLANGE	C2W753	CRACKED	20100108007	PAC
DHC 2 MKIII	2571	BATTERY SUPPORT	VALTBS1212	CRACKED	20100317004	PNR
DHC 2 MKIII	3246	WING STRUT FITTING	VALTBS12091	CORRODED	20100312003	PNR
DHC 3	5753	R/H FORE FLAP OUTBD	C3WF528	REPAIRABLE	20100106004	PNR
DHC 6	5520	ELEVATOR SKIN	C6TE101129	MISSING	20100309008	NCR
DHC 6	7530	BLEED AIR DUCT	C6VE10233	NEW	20100113004	NCR
DHC 6 200	2810	FUEL BLADDER	C6SC10523	NEW	20100311005	NCR
DHC 6 200	2810	FUEL BLADDER	C6SC10523	NEW	20100311006	PAC
DHC 6 300	2710	AILERON CONTROL CABLE	PDME0690651718	FRAYED	20100226006	NCR
DHC 6 300	3240	RUDDER PEDAL	C6CFM12108	DAMAGED	20100120001	ATL
DHC 8 102	2421	WIRE		CHAFFED	20100127009	ATL
DHC 8 102	2421	WIRE		CHAFFED & SHORT	20100201002	ATL
DHC 8 102	3220	HYDRAULIC TUBE	82920010229	LEAKING	20100224008	ATL
DHC 8 102	3250	TELESCOPIC LINKS	89925	BROKEN	20100305001	ATL
DHC 8 102	5101	ANGLE	85410149103	CRACKED	20100127010	PAC
DHC 8 102	5755	SPOILER ACTUATOR	A44700009	CRACKED	20100129010	ATL
DHC 8 102	5755	SPOILER ACTUATOR	A44700009	FRACTURED	20100113002	ATL
DHC 8 102	7900	OIL TRANSFER TUBE	3035197	CHAFED	20100309005	ONT
DHC 8 106	2530	GALLEY WIRES		REPAIRED	20100210001	PNR
DHC 8 202	2497	RETAINER	H85340006199	ARCED DAMAGE	20100111005	PNR
DHC 8 300	5610	WINDSHIELD	NP15790111	SHATTERED	20100319002	ONT
DHC 8 301	2120	AIR CYCLE MACHINE	78279016	INTERNAL FAILURE	20100326005	ATL
DHC 8 301	5751	AILERON HINGE FITTING	85740337107	CRACKED	20100127002	ATL
DHC 8 301	7110	LOWER COWLING LATCH PIN	NAS130322	WORN	20100211004	ATL
DHC 8 315	2710	PIN PULLEY GUARD	NAS427K9	MISSING	20100107005	ONT
DHC 8 315	3213	SHOCK STRUT	8800137	DAMAGED	20100107002	ONT
DHC 8 400	2497	HARNASS ASSY L/H REAR WIN	82440203405	DAMAGED BURNT	20100106001	ONT
DHC 8 400	2612	FIRE CONTROL AMP	47387203	INTERNAL FAULT	20100219003	ONT
DHC 8 402	2400	ELEC HARNASS	82410732401	OVERHEAT EVIDENCE	20100115005	QUE
CS2F 2	2910	1500 PSI HYDRAULIC LINE		BURST	20100519002	PNR
DHC 2 MKI	2710	AILERON CABLES	C2CF1131A	FRAYED	20100511017	ONT
DHC 2 MKI	2720	RUDDER CABLE	C2CF741AND	FRAYED	20100511018	ONT
DHC 2 MKI	3246	FWD FLOAT STRUTS	58S923	INCORRECT INSTAL	20100525021	PAC
DHC 2 MKI	5520	RIB DOUBLER	C2TE9ND	CRACKED	20100525019	PAC
DHC 2 MKIII	2730	TERMINAL END FITTING	M21260S5LH	NEW	20100510010	PNR
DHC 2 MKIII	3246	WIRE PULL FITTING	VALTBS12451	FAILED	20100614008	PAC
DHC 2 MKIII	5520	SPAR ONE PIECE ELEVATOR	C2TE141ND	NEW	20100621018	NCR
DHC 3	5751	SKIN	C3WA411	CRACKED PIECES	20100623004	PAC
DHC 3	8550	OIL FILTER	305925801	UNSERVICEABLE	20100505002	ONT
DHC 6 300	2720	RUDDER TRIM CABLE	C6CCF10643	FRAYED	20100608012	QUE
DHC 7 102	2750	PULLEY	MS202203	CRACKED	20100513006	ONT

MAKE/ MODEL	JASC	PART NAME	PART No	PART CONDITION	SDR No.	RGN
DHC 8 100	5755	SPOILER ACTUATOR	A44700009	HOUSING FAILURE	20100610001	ONT
DHC 8 102	2121	FAN		FAILED	20100507001	ATL
DHC 8 102	2431	BATTERY	4011769	THERMAL RUNAWAY	20100621010	ATL
DHC 8 102	2730	BEARING	MS2764816	RUSTED	20100617004	ATL
DHC 8 102	2910	HYDRAULIC DOOR CLOSE LINE	82910010209	LINE CRACKED	20100528014	PAC
DHC 8 102	3050	RADOME	4426X210	DAMAGED	20100412010	ATL
DHC 8 102	3320	BALLAST	BA080061	FAILED	20100614005	ATL
DHC 8 102	3510	O2 LINE FITTING		CRACKED	20100616004	ATL
DHC 8 102	5524	ELEVATOR STOP BUMPERS	85520271001	NEW	20100609002	ONT
DHC 8 102	5755	ROLL SPOILER ACTUATOR	A44700009	CRACKED/ LEAKING	20100615004	ATL
DHC 8 102	6120	PROPELLER CONTROLS		FAILED	20100513005	ATL
DHC 8 106	5755	SERVO ACTUATOR	A44700009	REPAIRED	20100614001	ONT
DHC 8 301	3233	RING RETAINER	83161	PARTIALLY ENGAGE	20100520001	ATL
DHC 8 301	5220	MECHANISM		STIFF AND DRY	20100407001	ATL
DHC 8 301	7321	CONTROL ROD	87620102011	MISSING RIVET	20100601002	ATL
DHC 8 311	2720	LOWER RADIUS ROD	85500015001	WORN/LOOSE RIVET	20100527001	ATL
DHC 8 311	3241	SERVOVALVE	37337	LEAKING	20100507013	ATL
DHC 8 311	3246	BEARINFG OUTER	L81214820629	NEW	20100407005	PAC
DHC 8 311	3246	OUTER BEARING	L81214820629	NOT APPROVED	20100406007	PAC
DHC 8 311	5610	L/H WINDSHIELD	NP15790111	TERMINAL L1 ARC	20100610005	ATL
DHC 8 315	5311	FRAME		MISSING	20100401002	ONT
DHC 8 400	3234	LG SELECTOR VALVE	483003	LEAKING	20100621012	ONT
DHC 8 400	5740	REAR SPAR ATTACH FITTING	85414564109	CRACKED	20100422003	ONT
<i>DIAMOND - AS</i>						
DA 40	3220	DAMPER ROD	D4132232033B	TUBE WORN	20100111004	PNR
DA 40	3220	DAMPER ROD	D4132232033B	TUBE WORN	20100120004	PNR
DA 40	7800	EXHAUST SUPPORT CLAMP	8031	CRACKED	20100317002	ONT
DA 40	8011	STARTER	14924LS	UNSERVICEABLE	20100531002	PNR
DA 42	2700	ELECTRONIC PISTON UNIT	IMD32430A50	GREASE MIGRATION	20100624004	ONT
DA 42	2810	FUEL TANK AUX R/H	D6028141200	CRACKED	20100628001	ONT
DA 42	2810	L/H AUXILLARY FUEL TANK	D6028141100	CRACKED	20100503007	ONT
DA 42	3221	LOWER ATTACH JOINT	D6032172351	CRACKED	20100419002	ONT
DA 42	2140	HEAT EXCHANGER	D6021401000	CRACKED	20100315002	ONT
DA 42	3220	LINK ARMS	D6032231053	CRACKED	20100309003	ONT
DA 42	5280	R/H MLG DOOR	D6052975200NCP	CRACKED	20100318011	ONT
<i>DIAMOND - CAN</i>						
DA 20 A1	2560	ELT	EBC102A	LOOSE	20100208008	ONT
DA 20 A1	8550	OIL PUMP HOUSING	810809	STRIPPED THREADS	20100115003	ONT
DA 20 C1	2434	ALTERNATOR BRACKET	2224121400	UNSERVICEABLE	20100513002	PNR
DA 20 C1	2810	FUEL TANK	2228610000	LEAKING	20100610003	PNR
DA 20 C1	2822	AIRFRAME FUEL PUMP	5367001	EXCESSIVE NOISE	20100621002	ATL
DA 20 C1	3246	FORK ASSY	203220080	LOOSE	20100528013	ATL
DA 20 C1	5347	SEAT RESTRAINT	504856403251	UNSERVICEABLE	20100513001	PNR
DA 20 C1	5610	WINDSHIELD	2056111501	POORLY BONDED	20100609004	ONT
DA 20 C1	7600	FRAME	2231116300	CRACKED	20100621004	ATL
DA 20 C1	2720	RUDDER PEDAL	2227271300	UNSERVICEABLE	20100211002	PNR
DA 20 C1	3220	FORK	2032200106	CRACKED	20100317001	ONT
DA 20 C1	3246	BEARING SEALED	60042RSDIN625	MISSING	20100114001	ONT

MAKE/ MODEL	JASC	PART NAME	PART No	PART CONDITION	SDR No.	RGN
DA 20 C1	7314	ENGINE DRIVEN FUEL PUMP		SERVICEABLE	20100319001	ONT
<i>DORNIER</i>						
328 300	3510	ELBOW FITTING	MS21907D5	CRACKED	20100628004	QUE
<i>DOUGLAS</i>						
DC10 30F	5415	BOLT	RA11005122	CORRDED/ PITTED	20100528012	PAC
<i>EMBRAER</i>						
ERJ 190 100 IGW	3412	ELEMENT	2015G2H2H8	SHORTED	20100322004	QUE
ERJ 170 100 LR	7150	W126 HARNESS	17028962401	WIRE DAMAGE	20100510006	QUE
ERJ 190 100 IGW	2761	MULTIFUNCTION SPOILER	4148001009	LEAKING	20100526003	QUE
ERJ 190 100 IGW	2910	PRESSURE LINE		CRACKED	20100428003	QUE
ERJ 190 100 IGW	7197	CLAMP		CHAFFING	20100428002	QUE
ERJ 190 200 IGW	5610	ACTUATION ROD	B755410104	GOUGED	20100614006	QUE
<i>EUROCOPTER DEUT</i>						
BO105 S CDN BS 4	5302	R/H SKIN	1053025164	CRACKED	20100427006	ONT
BO105 S CDN BS 4	6400	BLADE MOUNTING FORK	112131721010	GOOD	20100409007	ONT
EC 135P1	2810	MAIN TANK	L281M20C1015	DELAMINATED	20100324019	PAC
<i>EUROCOPTER FRANCE</i>						
AS 355	6210	M/R BLADE PINS	350A31177001	WORN	20100106007	ONT
AS 355	6220	BALL JOINTS (BEARINGS)	117775P	WORN	20100106009	ONT
AS 355	2913	HYDRAULIC PULLEY	350A35109221	WORN	20100621001	ONT
EC 130 B4	6220	BUSHING ASSY		LOOSE	20100413014	ONT
EC 130 B4	6220	END BUSHING STAR ARM	NOPREFINIPC	DISLOCATION	20100409008	ONT
EC 130 B4	6510	BRACKET #1 BEARING HANGE	350A2342362251	REWORKED	20100409006	ONT
AS 355	6220	SPHERICAL THRUST BOLTS	350A31185421	WORN	20100106008	ONT
AS 355	6230	SPACER	704A33640021	CRACKED	20100105006	PAC
AS 355	6730	HYDRAULIC SERVO	AC67246	UNSERVICEABLE	20100226004	PAC
EC 120 B	2120	OERATING CABLE	C212A1202103	BROKEN	20100315006	PAC
EC 130 B4	6220	BLADE	350A21491800	BROKEN	20100211003	ONT
<i>FAIRCHILD</i>						
SA227AC	1000	PAPER CLIP		SHORTED	20100528007	ONT
SA227AC	6122	TUBE ASSY	31080811	CRACKED	20100528006	ONT
SA227CC	2740	HORZ TRUNNION BOLT	2743048005	CORRODED	20100427009	ONT
SA227CC	2910	TUBE ASSY	2781032377	CRACKED	20100519004	ONT
SA227CC	7130	ASPIRATOR SEAL	2762094083	INTERMITTANT	20100419003	ONT
SA227DC	2910	HYD HOSE	SS1009H000A441	CHAFED	20100415001	ONT
SA227DC	6140	BETA SWITCH	8975428	UNSERVICIBLE	20100528005	ONT
SA227DC	7220	ENGINE INTAKE HEAT TUBE	8943825	CRACKED	20100519003	ONT
SA227DC	7250	TURBINE NOZZLE	31037839	UNSERVICIBLE	20100601006	ONT
SA227AC	0	ESSENTIAL BUS SWITCH	8781K11	CRACKED	20100303004	ONT
SA227AC	2400	BUS TIE SWITCH	8781K11	OVERHEATED	20100105001	ONT
SA227AC	5610	WINDSHIELD HEATED R/H	2719442004	DELAMINATED	20100108003	PNR
SA227CC	7300	NTS VALVE	701000121	UNSERVICEABLE	20100126005	ONT
SA227DC	0	ESENTIAL BUS SWITCH	8781K11	CRACKED	20100303005	ONT
SA227DC	2910	HYDRAULIC LINE	SS1009H000A441	CHAFED	20100316001	ONT
SA227DC	7300	FITTING	2764065011	CRACKED	20100201005	ONT
SA227DC	7320	FCU	8978012	INTERMITTANT	20100212002	ONT

MAKE/ MODEL	JASC	PART NAME	PART No	PART CONDITION	SDR No.	RGN
<i>FOUND BROTHERS</i>						
FBA 2C1	3210	LANDING GEAR TIE BOLT	U369	BENT	20100526005	PAC
FBA 2C4	3246	TAIL WHEEL FRONT PLATE	F5073	CRACKED	20100423009	ONT
<i>GULFSTREAM - ISRAELS</i>						
GULFSTREAM 100	2710	ROD	25W511006003	BROKEN	20100504004	ONT
ASTRA SPX	2910	LINE-HYDRAULIC PRESSURE	SBJ10682501	CRACKED	20100208001	ONT
<i>HAWKER SIDDELEY - UK</i>						
HS 748 2A	2900	HOSE	4Q2395	WORN OR CHAFED	20100504001	ONT
HS 748 2A	2910	HYDRAULIC FLEX HOSE	T2C5000605500	RUPTURED	20100603004	PNR
HS 748 2A	5610	WINDSCREEN	1D13941	CRACKED	20100405001	ONT
<i>HUGHES</i>						
369D	5313	UPPER LONGERON	369D230723	CRACKED	20100520002	PAC
369D	6210	BLADE PIN	369A10045	WELL USED	20100527004	PAC
<i>KAMAN</i>						
K 1200	6320	HOSE ASSY	K982061003	RUPTURED	20100403001	PAC
<i>LEARJET</i>						
35A	3260	SWITCH -GEAR DOWN	63210178	USED	20100204007	QUE
31A	2910	TUBE ASSY	3100010128	CHAFED	20100426014	PAC
45	2820	FUEL LINE	4528103466013	BAD FLARE	20100416009	PAC
45	3610	HP DUCT FIREWALL SEAL	316154	TORN	20100428009	PAC
45	2752	BALLSCREW SLEEVE	145468	ORIGINAL	20100122006	ONT
<i>LOCKHEED</i>						
188A	2900	HYDRAULIC FILTER	6682171	PLUGGED	20100426015	PNR
188A	7250	TURBINE COUPLING NUT	6737283	BROKEN	20100531005	PNR
382G	2720	RUDDER TORQUE ARM	339729	CORRODED	20100301005	PAC
<i>MITSUBISHI - USA</i>						
MU 2B60	7240	1ST STAGE IMPELLER	8962233	CRACKED	20100510001	ONT
MU 2B60	3246	TUBE	XA1AM	WORN	20100112001	ONT
<i>MORAVAN</i>						
Z242L	3250	STEER SPRING	Z4242170001	BROKEN	20100322001	ONT
Z242L	2750	FLAP CENTRE CABLE	Z4243130000	FRAYED	20100513004	ONT
Z242L	3250	STEER SPRING	Z4242170001	BROKEN	20100504002	ONT
Z242L	7414	DISTRIBUTOR BLOCK GEAR	K3822	LOOSE	20100409001	ONT
Z242L	5310	AIRFRAME STRUCTURE	L2421100000C	CRACKED	20100120002	ONT
Z242L	7800	EXHAUST STRUT	L24266701310B	BROKEN	20100212001	ONT
<i>PIAGGIO</i>						
P180 AVANTI	2910	D C MOTOR	2913	SEIZED	20100312002	ONT
<i>PILATUS - SW</i>						
PC 12 45	3210	DRAG LINK ASSY R/H	5322012289	CRACKED	20100617003	ONT
PC 12 45	3310	BULB	6839	UNSERVICEABLE	20100510008	ONT
PC 12 47E	7921	OIL COOLER DOOR	5791012021A	CRACKED	20100408001	ONT
PC 12 45	3418	AOA TRANSMITTER -LEFT	9754421421		20100317006	ONT
PC 12 47E	2215	SPACER		LOOSE FIT	20100222002	ONT
<i>PIPER</i>						
PA23 250	3220	FORK AND ROD ASSY	3179303	CRACKED	20100311003	ONT
PA23 250	3222	FORK	3179303	CRACKED	20100324014	QUE
PA28R 200	5711	SPAR AFT INBOARD	62054000	CORRODED	20100226005	ONT
PA31 350	2750	POTENTIOMETER	74243002	SIEZED	20100324017	PAC
PA31 350	2751	FLAP AMPLIFIER	551992	NOT WORKING	20100316002	PNR
PA12	3246	EYE BOLT	88C706	BROKEN	20100430006	ONT

MAKE/ MODEL	JASC	PART NAME	PART No	PART CONDITION	SDR No.	RGN
PA24	5540	RUDDER SPAR	2072910	CRACKED	20100514001	ONT
PA24 250	5541	SPAR		CRACKED	20100525022	ONT
PA28 180	2710	AILERON CABLE	62701002	FRAYED	20100511016	ONT
PA31	3222	NLG TRUNNION	40273000	CRACKED	20100617008	PNR
PA31 350	2731	PITCH TRIM CABLE ASS`Y	187111600	SERVICABLE	20100611002	PAC
PA31 350	7120	ENGINE MOUNT	4000707	REPAIRED	20100521004	PNR
PA31 350	7421	SPARK PLUG	RHB36S	NEW	20100512004	PNR
PA31 350	8530	ROCKER ARM	15F21190	WORN	20100505006	PNR
PA31T	3260	SWITCH ASSY	4793603	UNSERVICEABLE	20100622012	ONT
PA44 180	2562	ELT	S184050101	INOPERATIVE	20100525015	PNR
PA44 180	3220	DRAG LINK ASSY NOSE	8628003	BROKEN	20100512006	ATL
PA46 500TP	3411	PITOT HEAD	8390506	FAILED	20100505004	PNR
PA60 600	1000	HOSE CLAMP		GOOD	20100608008	PAC
PA34 200	5711	R/H WING MAIN SPAR	6658201	CRACKED	20100302008	PNR
PA34 200	5753	NOSE RIB	6232800623281	CRACKED	20100115004	ONT
PA44 180	2140	COMBUSTION AIR SWITCH	94E423	FAILED	20100121006	PNR
PA44 180	3260	GEAR DOWNLOCK SPRING	487495	BROKEN	20100204005	ATL
PA44 180	5600	FUSELAGE FITTING	79553800	CORRODED	20100201001	ONT
PA44 180	7322	CARBURETOR	61E23632106019	WORN	20100204002	ATL
<i>ROBINSON</i>						
R44 II	2435	CLUTCH ACTUATOR	C0512	FAILED	20100525010	PNR
R44 II	2562	ELT	5182150202	FAILED	20100428006	PNR
R44 II	2820	HOSE ASSY	D20626	KINKED	20100531004	PNR
R44 II	2822	FUEL PUMP	LW15473	LEAKING	20100422008	PNR
R44 II	6730	HYDRAULIC SERVO	D2121REVH	LEAKING	20100504011	PNR
R44 II	7414	MAGNETO	IO600646201	FAULTY	20100616006	PNR
R44 II	7602	FUEL CONTROL UNIT	25766304	STICKY	20100413008	PNR
R44	7414	COIL	ES103571651	WORN	20100218006	PNR
R44 II	6310	CLUTCH	C1883	BROKEN	20100301011	PNR
R44 II	7314	AUX FUEL BOOST PUMP	D8187B	SHORTED	20100324010	PNR
<i>SAAB</i>						
SF340A	2720	RUDDER PRIMARY STOP	7255700011	BENT	20100406002	PAC
SF340A	0	ELEVATR HINGE PIN BRACKET	7255163511	CRACKED	20100301003	PAC
<i>SCHWEIZER</i>						
269C	6510	T/R D S FRWD SPLINE	269A54301	DAMAGED	20100416004	ONT
<i>SHORT & HARLAND</i>						
SD3 60	2400	ESSENTIAL SERVICE RELAY	5945999332574	BURNT TERMINAL	20100312006	PAC
<i>SIKORSKY</i>						
S61N	6320	RING GEAR	S613522017003	TEETH MISSING	20100406003	PAC
S61N	6420	SPINDLE	S611033406001	UNSERVICEABLE	20100521009	PAC
S76C	2216	TRIM ACTUATOR		FAILED	20100413017	PAC
S76C	2435	STARTER GENERATOR	200SG144Q1	FAILED	20100413009	PAC
S76C	2697	ENGINE FLAME DETECTOR	7630607902	FAILED	20100526008	PAC
S76C	3340	STROBE LIGHT ASSY	203500723	FAILED	20100413007	PAC
S76C	6220	EXPANDABLE PIN	761040801510	SEIZED	20100413006	PAC
S92A	3097	WIRING HARNESS		CHAFFED	20100602002	ATL
S92A	6320	OIL BY-PASS VALVE	9235115809102	UNSERVICEABLE	20100614003	ATL
S76	6320	SPUR GEAR	7635109033104	NEW	20100301009	PAC
S92A	6320	MAIN GEARBOX MAIN MODULE	9235115100	CRACKED	20100129006	ATL
<i>SWEARINGEN</i>						
SA226AT	2823	LINE	31033921	CRACKED	20100427002	ONT
SA226TC	5610	WINDSHIELD HEATED CAPTAIN	2719442003	CRACKED	20100222004	PNR

MAKE/ MODEL	JASC	PART NAME	PART No	PART CONDITION	SDR No.	RGN
SA226TC	5610	WINDSHIELD HEATED COPILOT	2719442004	CRACKED	20100301008	PNR
SA226TC	5610	WINDSHIELD R/H	2719442004	CRACKED	20100114006	PAC
<i>VANS</i>						
RV4	5554	CASTLE NUT-COTTER PIN	AN3103	PIN BROKE-NUT	20100415003	PAC
ENGINE						
<i>ALLISON</i>						
250-C20	0	INPUT SLINED SHAFT		BEARING FAILED	20100512005	PNR
250-C20R	7910	ENG OIL FILTER	6870032N	DETACHED CAP	20100511009	PAC
250-C30P	0	COUPLING	23032345	NEW	20100511001	ONT
250-C30P	7230	COMPRESSOR REAR SUPPORT	23064593	TIME SINCE NEW	20100507010	PNR
250-C30S	7920	FILTER ENGINE SCAVENGE	WF335202	DISBONDED	20100429001	QUE
501-D13D	7800	TBOLT		BROKEN	20100521007	PAC
250-C20B	7210	TORQUEMETER GEAR	23035299P	CRACKED	20100128003	PAC
250-C20B	7230	ADAPTER COUPLING	23076559	NEW	20100211005	PNR
250-C20R/2	7260	AIR/OIL SEPARATOR GEAR	23056128	SCRAP	20100322007	PAC
250-C40B	7200	STUD 0 250-20X0 190- 32X1	AN154720	OVERHAULED	20100122007	PNR
250-C47B	7230	COMPRESSOR REAR SUPPORT	23064593	OVERHAULED	20100209011	PNR
501-D13D	7603	RIVETS		UNSERVICEABLE	20100309004	PAC
<i>AVCO LYCOMING</i>						
IO-540-AE1A5	0	MAGNETO	IO600646201	FAULTY	20100625001	PNR
LTIO-540-J2BD	8520	ENGINE	LTIO540J2BD	METAL CONTAMINATED	20100514007	PAC
O-235-L2C	7421	SPARK PLUG	UREM37BY	UNSERVICEABLE	20100504013	PAC
O-235-L2C	7910	OIL FILTER ADAPTER HOUSIN	5578642	UNSERVICEABLE	20100625006	ONT
O-320-D2A	8520	CRANKSHAFT	SL32500E	BROKEN	20100625004	PAC
O-320-E3D	8520	CRANKSHAFT	LW17060	CRACKED	20100622021	PAC
O-360-A1D	8550	SUMP GASKET	LW13353	MISALIGNED	20100512008	PNR
O-540-B4B5	8530	CAMSHAFT/LIFTER CAPS		DAMAGED	20100418001	PNR
IO-540-AE1A5	7414	MAIN POINTS	10382585	WORN	20100121005	PNR
LTIO-540-J2BD	8120	TURBOCHARGER	4091709001	SEIZED	20100101004	PAC
LTIO-540-J2BD	8520	ENGINE BLOCK		CRACKED	20100330005	PNR
O-360-A4M	8520	PISTON	LW75089	CRACKED	20100330002	ONT
T5313B	7280	FILTER SCREEN	13006591	NEW	20100302007	PAC
<i>BOMBARDIER ROTAX</i>						
912 F3	6122	BOLT OR SCREW	941521	SHEARED	20100601005	NCR
914 F	8520	CRANKCASE	886354	CRACKED	20100519008	NCR
<i>GARRETT</i>						
TFE731-40R- 200G	7921	RETAINER	30611161	BROKEN	20100614007	ONT
TPE331-10UA	7260	BEARING	31035851	FAILED	20100324016	PNR
TPE331-12UHR- 703H	7261	O-RING	M832481231	SLICED	20100212005	PNR
<i>GENERAL ELECTRIC</i>						
CT58-140-2	7260	BEARING	4001T99P03	NEW	20100415004	PAC
<i>PRATT & WHITNEY - CAN</i>						
JT15D-1A	7250	#3 BEARING	3017323	DESTROYED	20100311001	ATL
PT6A-114A	7250	#2 BEARING SEAL		LEAKING	20100202006	PNR
PT6A-27	7910	OIL FILTER	305925801	UNSERVICEABLE	20100218011	ONT
PT6A-34	7312	OIL TO FUEL HEATER ASSY	10552E	CRACKED	20100105005	PNR
PT6A-41	7280	CHIP DETECTOR	3030359	SHEARED	20100114005	PAC

MAKE/ MODEL	JASC	PART NAME	PART No	PART CONDITION	SDR No.	RGN
PT6A-67D	7931	ELBOW RGB OIL PRESSURE TR	310047001	FRACTURED	20100217003	ONT
PT6A-67D	7931	ELBOW RGB OIL PRESSURE TR	310047001	FRACTURED	20100217005	ONT
PT6A-67R	7313	FUEL DELIVERY TUBE PLATE	3011158	MISSING	20100317005	PNR
PT6T-3B	7250	PT6 CT VANE RING	3039551	UNSERVICEABLE	20100301001	PAC
PW121	7321	FUEL CONTROL		OVERHEATED	20100215001	ATL
PW123AF	7312	THERMAL VALVE	726604	GOOD	20100312005	QUE
PW127G	2612	FUEL NOZZLE		LEAKING	20100125006	QUE
PW545A	7532	BLEED VALVE		FAULTY	20100216007	QUE
PT6A-28	7200	ENGINE	PT6A28	QUIT	20100528011	PNR
PT6A-41	2435	STARTOR/GENERATOR	23048020	DEFECTIVE	20100406005	QUE
PT6A-41	7230	COMPRESSOR BLADES		FAILURE	20100507012	ATL
PT6A-41	7310	FUEL LINE	PRATTWHITNEYCA	SHEARED	20100406004	QUE
PT6A-42	7321	COUPLING	3024973	SHEARED	20100624005	PNR
PT6A-65B	7230	COMPRESSOR SECTION		RUBBING	20100622013	PNR
PT6A-65B	7310	FUEL LINE	3040637	SEVERLY CHAFFED	20100420001	ATL
PT6A-67AF	0	HEX BOLT	MS949034	FAILED	20100615002	PNR
PT6A-67D	7250	PT6	67D	OVERHAULED	20100625002	PAC
PW123	7250	HP TURBIN		BLADE RUBBING	20100531001	ATL
PW308C	7220	AIR INLET		CRACKED	20100601008	QUE
<i>PRATT & WHITNEY - USA</i>						
JFTD12A-4A	7230	4TH STAGE DISK ASSY	44804	BLADE DISLODGED	20100119008	PAC
R-985-AN-14B	0	VILBREQUIN		CRACKED	20100607002	QUE
R-985-AN-14B	8530	CYLINDER HEAD	399353CA1	CRACKED	20100525020	PAC
WASP CA3	7322	CARBURETOR	BENDIX	UNSERVICEABLE	20100421002	PAC
<i>ROLLS ROYCE - GY</i>						
SPEY 511-8	7250	HPC STG 1 2 3 QUADRANT		DE BRAZED	20100511013	QUE
<i>TELEDYNE CONTINENTAL</i>						
IO-240-B	7921	HOSE		LEAKING	20100126001	ONT
IO-360-ES	8520	CRANK CASE		CRACKED	20100302009	ONT
IO-520-F	8530	EXHAUST VALVE		STUCK	20100308006	PNR
IO-550	1200	TABLE OF LIMITS	FIG723008	ERROR	20100113003	PNR
IO-550-F	8530	CYLINDER STUD ASSY	AEC631397	BORE TOO SMALL	20100319005	PNR
O-470-11B	8530	VALVE EXHAUST	655480A4BPKIT	CASSE	20100106002	QUE
IO-360-GB	7414	MAGNETO DRIVE GEAR ASSEMB	630525	WORN	20100608014	ONT
IO-520-D	8520	CRANKSHAFT GEAR	657175	NEW	20100505011	PNR
IO-520-F	2820	HOSE	3608D0120	LOOSE	20100521006	PAC
IO-520-M	8530	CYLINDER		SEPARATED	20100407004	PNR
IO-550-F	8530	HYDRAULIC LIFTER	653888	SPALLED AND CHIP	20100525014	PNR
O-470-RCS	8530	CYLINDER ASSY	ECE680ST	UNSERVICEABLE	20100218008	PNR
<i>THIELERT</i>						
TAE12502	7410	GLOW PLUG	053940K001301	UNSERVICEABLE	20100329007	PNR
TAE12502	8530	HEAD PROTECTION SHEET	527520H005005	CRACKED	20100119009	PNR
<i>TURBOMECA</i>						
ARRIEL 1D1	7321	FUEL CONTROL UNIT	164548720	ALFUNCTIONED	20100127011	PAC
ARRIEL 1B	7400	IGNITOR	CH34745	CRACKED	20100526007	QUE
ARRIEL 2B1	7200	MAG SEAL	9560134100	NEW	20100105008	PNR
ARRIUS 2F	7261	STEEL RING WITH LIFT FACE		CRACKED	20100323003	PNR
<i>WILLIAMS</i>						
FJ44-3A	7200	TT2PT2 SENSOR	2423576707NC	HEATER FAILED	20100121010	PNR

MAKE/ MODEL	JASC	PART NAME	PART No	PART CONDITION	SDR No.	RGN
PROPELLER						
<i>HAMILTON STANDARDS</i>						
12D40	6114	BARREL	50384	CRACKED	20100622023	PNR
54H60-77	6100	VALVE HOUSING COVER	554900	MISSING	20100515001	PNR
54H60-77	6111	BLADE ROOT TEFLON STRIP		FAILED	20100512011	PNR
<i>HARTZELL</i>						
HC-B3TN-3B	6110	SLIP RING	4E15551	DE-BONDED	20100504003	PNR
HC-B3TN-5G	6111	BLADE PROPELLER	T10282N	CRACKED	20100413016	PAC
HC-D4N-3C	6123	AUTOFEATHER LOW PRESS SWI	503891211	UNSERVICEABLE	20100517001	PNR
HC-E3YR-2ALTF	6110	PRELOAD PLATE SCREW	A3204	WORN	20100423011	PNR
HC-E3YR-2ATF	6111	PROPELLER BLADE	FC84686R	IN SERVICE	20100422002	PNR
HC-E4A-3J	6110	HUB	E6826	FAIR	20100510009	ONT
HC-B3R30-2E	6114	HUB	84074	OUT OF LIMITS	20100122004	PAC
HC-E3YR-2ATF	6111	BLADES	FC84686R	DAMAGED	20100129007	PNR
HC-E4A-3D	6110	SLIP RING	4E30081	WARPED	20100128004	ONT
<i>MCCAULEY</i>						
1A103/TCM6956	6114	PROPELLER	1A103TCM6956	UNSERVICEABLE	20100513003	NCR
4HFR34C652-K	6110	PISTON ROD	D5170	ELONGATED HOLES	20100511011	ONT
4HFR34C652-K	6110	REVERSE STOP SCREW	B7280	GOOD	20100511010	ONT
D3A34C404	6110	BRACKET	12500261	WORN	20100308004	ONT
EQUIPMENT						
<i>AERO DESIGN</i>						
407824	2432	BATTERY CELL	ADVHP4300KH3	LEAKING	20100615005	ATL
<i>AIR TRACTOR</i>						
NSN	2750	FLAP RELAY		MIS WIRED	20100604004	PAC
<i>AIRCRAFT PARTS</i>						
SWITCH	1420	SWITCH	MS2465823D	BROKEN	20100216014	PAC
<i>ARTEX</i>						
C4061	2560	SEAL RETAINER	UKN	CRACKED	20100310008	ATL
ME40645366	2560	EMERGENCY EQUIP		NOT FUNCTIONING	20100119011	PNR
<i>AVCO LYCOMING</i>						
O540B4B5	8520	CRANKCASE AIR/OIL SEPERAT	M20MODEL300	BLOCKED	20100502001	PNR
<i>AVOX</i>						
806371130	3500	O2 REGULATOR	80637006	DAMAGED	20100611003	QUE
806371130	3500	O2 REGULATOR	80637006	DAMAGED	20100611004	QUE
<i>BEECH</i>						
SPS1307	2422	INVERTER	SPS1307	OVERHEATED	20100108005	PAC
<i>BELL TEXTRON - USA</i>						
206	5310	SKIN	206033003105S	NEW	20100426012	PAC
212062514	7921	IMPELLER	2660162401	NEW	20100617006	PAC
406012102	6720	YOKE	406012102109	NEW	20100622020	PAC
<i>BF GOODRICH</i>						
314801	3246	WHEEL HALF	314801	BROKEN	20100611005	ATL
<i>BOEING</i>						
106199825	3800	HOSE	106199825	NEW	20100119007	PNR
5963643006	5753	FLAP TRANS SUPPORT TUBE		ORIGINAL	20100216018	QUE
<i>BOMBARDIER</i>						
HYDRAULIC	2932	PRESSURE SWITCH	7G773	UNSERVICEABLE	20100422005	ATL
<i>CESSNA</i>						
5503673	6113	BULKHEAD	55032112	CRACKED	20100122008	PNR

MAKE/ MODEL	JASC	PART NAME	PART No	PART CONDITION	SDR No.	RGN
<i>CLEVELAND</i>						
4077	3246	NOSE WHEEL ASSY	4077	LOOSE	20100413010	PNR
4077	3246	NOSE WHEEL ASSY	4077	LOOSE	20100413012	PNR
<i>CMCN</i>						
100602573000	2297	IAC	100602573000	UNSERVICEABLE	20100430003	QUE
<i>COLLINS AVIONICS</i>						
8220868073	3461	FMC COMPUTER/OR CDU	8221354102	SERVICEABLE	20100420003	ONT
<i>DAYTON</i>						
107733	2562	WHIP		BROKEN SEPARATE	20100202001	QUE
107733	2562	WHIP		SEPARATED/ BROKEN	20100202002	QUE
<i>EASTERN AERO MARINE</i>						
R1300317RB	2560	OPERATING HEAD	R1265101	JAMMED	20100224011	NCR
<i>ECE</i>						
975UNO1B4AA5	8000	SWITCH	975UNO1B4AA5P	UNSERVICEABLE	20100129005	ONT
<i>EUROCOPTER FRSNCE</i>						
20326700	3246	INLET CHECK VALVE	6149910D	STICKING	20100506003	QUE
<i>FAIRCHILD</i>						
FA2100FDR	3130	FDR	2100404300	UNSERVICEABLE	20100614004	ATL
<i>GOODRICH</i>						
23085001	2435	ARMATURE SHAFT	230851500	WORN	20100122009	PAC
<i>HELI - LYNX</i>						
ADCFILTER	0	ADC CHIP PLUG	2031	DAMAGED	20100615008	PNR
ADCFILTER	0	ADC CHIP PLUG	2031	DAMAGED	20100615010	PNR
<i>HEROUX</i>						
2158500142	3233	NOSE LANDING GEAR ACTUATO	15030019	UNSERVICEABLE	20100226001	QUE
<i>INTERCONT DYNAMICS</i>						
51922702031	3416	ENCODING ALTIMETER	51922702031	INTERMITTANT	20100113001	PNR
<i>KELLY AEROSPACE</i>						
4091709001	8120	COMPRESSOR		FOD/DAMAGED	20100101005	PAC
<i>LEAR SIEGLER</i>						
1216720117	2000	RELAY 52 SECOND DELAY	10950304	WRONG TYPE	20100301002	PAC
23048018	2435	STARTER GENERATOR	23048018	PREMATURE FAILUR	20100204009	QUE
<i>NARCO</i>						
ELT10	2560	BATTERY	10009	OVERHEATED	20100525023	PAC
<i>PACIFIC SCIENTIFIC</i>						
111147501	2510	BUCKLE	PACIFICSCIENTIF	CRACKED	20100413002	PAC
111147501	2510	BUCKLE	PACIFICSCIENTIF	CRACKLED	20100413001	PAC
<i>PARKER HANNIFIN</i>						
1H982	2120	FLOW CONTROL UNIT	1H982	WILL NOT PRODUCE	20100121002	PNR
<i>PIPER</i>						
268028	2913	HYDRAULIC PUMP	1213HBG310	SHAFT BROKEN	20100127003	QUE
<i>ROCHESTER</i>						
C6695600103	7931	OIL PRESSURE GAUGE	264600062	NEEDLE STUCK	20100203012	PNR
<i>SIGMA</i>						
235010616	3421	ATTITUDE GRYO	235010616	FAILED	20100212007	PNR
235010616	3421	ATTITUDE GYRO	235010616	FAILED	20100212006	PNR
<i>SKYTRONICS</i>						
7775T	2434	DRIVE COUPLING	6682	WORN	20100618003	PAC

MAKE/ MODEL	JASC	PART NAME	PART No	PART CONDITION	SDR No.	RGN
<i>SLICK ELECTRO</i>						
4370	7414	COIL	K3975	MISALIGNED	20100414004	PNR
66GC15SFNN	7414	COIL	K3975	TAB BENT DOWN	20100510002	PNR
<i>TELEDYNE BENDIX</i>						
105005561	7414	MAG HOUSING		CRACKED	20100504012	PAC
<i>TEMPEST</i>						
AVX1041641	7322	MIXTURE SLEEVE		LOOSE	20100325006	PAC
<i>TEXTRON LYCOMING</i>						
O235K2C	7322	CARBURETOR	105199	FUEL SEEP	20100603001	PNR
IO360L2A	8011	STARTER	PM2401	FRACTURED	20100122001	ONT
<i>TURBOMECA</i>						
H3421	2612	FIRE DETECTION CIRCUIT	H3421	FAILED	20100413005	PAC
<i>UNISON</i>						
4309	7414	ROTOR & DIST GEARS & BLOC	M3827	DAMAGED	20100303001	PNR
4370	7414	GEAR ASSY	K3822	LOOSE BROKEN	20100624001	ONT
4370	7414	ROTOR	M3548	UNSERVICEABLE	20100617012	ONT
4372	7414	MAG IMPULSE COUPLING	M3100	BROKEN	20100105002	ONT
<i>UNIVERSAL</i>						
WAASFMSSCN	3461	WAAS FMS SCN1000 X/1100 X	3116X2111X	IN-SERVICE	20100118007	ONT
<i>WIPAIRE</i>						
WIPLINE8000	3246	FLOAT		END CAP SEPARATE	20100310004	NCR

HEADQUARTERS

Transport Canada (AARDG)
Place de Ville, Tower C
Ottawa ON K1A 0N8
Tel: 613-952-4357

REGIONAL OFFICES

Atlantic

Transport Canada
95 Foundry St., 6th Floor
Moncton, NB E1C 5H7
Tel: 1-800-387-4999

Prairie and Northern

Transport Canada
344 Edmonton Street
Winnipeg, MB R3C 0P6
Tel: 204-983-3152
1-888-463-0521

Ontario

Transport Canada
4900 Yonge St., Suite 400
Toronto, ON M2N 6A5
Tel: 416-952-0230

Quebec

Transport Canada
700 Leigh Capreol
Dorval, QC H4Y 1G7
Tel: 514-633-3319

Pacific

Transport Canada
800 Burrard St., Suite 620
Vancouver, BC V6Z 2J8
Tel: 604-666-3518

Ordering TC Publications & Forms

North America	1 888 830-4911
National Capital Region	613 991-4071
Fax	613 991-2081
E-Mail	MPS@tc.gc.ca

CIVIL AVIATION INTERNET SITES:

Civil Aviation Homepage

www.tc.gc.ca/civilaviation/menu.htm

Continuing Airworthiness

www.tc.gc.ca/CivilAviation/certification/continuing/About.htm

Canadian Aviation Regulations (CARs)

www.tc.gc.ca/civilaviation/regserv/Affairs/cars/menu.htm

Airworthiness Directive

www.tc.gc.ca/carwis-swimn

Civil Aviation Safety Alerts (CASA):

www.tc.gc.ca/civil-aviation-safety-alert

Airworthiness Notices

www.tc.gc.ca/civilaviation/maintenance/aarpc/ans/menu.htm

Web Service Difficulty Reporting System (WSDRS)

www.tc.gc.ca/wsdrs