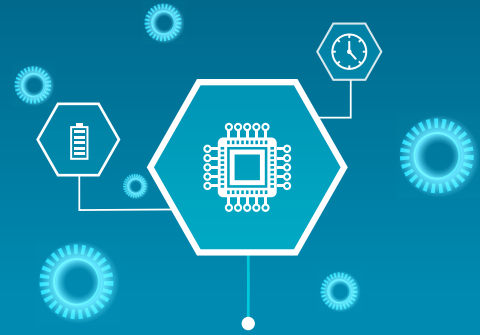




ELD HANDOUT FOR MOTOR CARRIERS AND DRIVERS



What's an ELD?

An electronic logging device (ELD) is a tamper-resistant device that automatically records driving time by syncing with the vehicle's engine. The ELD makes it easier to maintain a driver's record of duty status (RODS) also known as daily logs. Operating with an ELD is a legal requirement for federally regulated motor carriers and their drivers. Only ELDs that are compliant with the [Commercial Vehicle Drivers Hours of Service Regulations](#) (the Regulations), and tested and certified by a certification body accredited by Transport Canada, are permissible. Certified devices are listed on [Transport Canada's ELD webpage](#).

What are the benefits of ELDs?

ELDs help you work within allowed driving hours, improve compliance with hours of service and therefore contribute to reduced driver fatigue and a lower risk of collisions. ELDs also reduce the time it takes to complete your RODS and lessens the administrative burden compared to paper daily logs. They will also help to level the playing field by promoting fairer competition among motor carriers.

Who needs one?

If you are a federally regulated commercial driver (i.e. travel between provinces/territories or across the Canadian border) and are required to track your hours of service by filling out a RODS, even occasionally, you will need an ELD. U.S. drivers operating in Canada must also use one of the certified devices [listed on Transport Canada's ELD webpage](#).

When do I need one?

As of June 12, 2021, the Regulations have made ELDs mandatory. However, until January 1, 2023, the provinces and territories are supporting the mandate through a period of progressive enforcement, without penalties, focusing on education and awareness. This approach supports industry through the transition and gives more time for devices to become certified. As enforcement of the federal *Commercial Vehicle Drivers Hours of Service Regulations* is a Provincial/territorial responsibility, it is important to be aware of their regulations and requirements. Please consult the link below for the jurisdiction in which you operate as well as the March 7, 2022 CCMTA [Messages for Industry with Respect to the Federal Electronic Logging Device Mandate](#).

Am I exempt?

If you operate within 160 km of your home terminal (and return each day to that home terminal) you are not required to complete a RODS and therefore don't require an ELD. See section 77(3) of the Regulations for additional requirements. However, if you drive outside of the 160 km at any time, you will require an ELD.

You also don't need an ELD if you operate:

- a vehicle manufactured before model year 2000 (model year 2000 or newer vehicles but with a pre-2000 engine are not exempt);
- under a rental agreement no longer than 30 days that is not extended for the same vehicle;
- for a motor carrier that is operating under a federal permit issued by a provincial director; or
- for a motor carrier that is operating under an exemption granted under section 16 of the *Motor Vehicle Transport Act*.

How do I get an ELD?

ELD manufacturers are having their devices tested and certified by accredited certification bodies. As devices become certified they will be added to the [list of certified ELDs on Transport Canada's webpage](#). Information on the ELD manufacturer as well as details on the certified devices will be listed.

What ELD should I get?

Many devices have helpful features that go above and beyond the minimum ELD requirements specified in the Regulations. These functions could be beneficial to your operations. After looking at the different features offered by ELD providers you should establish a list of the functions your type of operation needs and then find the certified device that matches your requirements.

Important Links

Transport Canada's ELD webpage

<https://tc.canada.ca/en/road-transportation/electronic-logging-devices>

Commercial Vehicle Drivers Hours of Service Regulations

<https://laws-lois.justice.gc.ca/eng/regulations/SOR-2005-313/FullText.html>


Provincial / Territorial webpages:

- Alberta
- British Columbia
- Manitoba
- New Brunswick
- Newfoundland and Labrador
- Northwest Territories
- Nova Scotia
- Nunavut*
- Ontario
- Prince Edward Island
- Québec
- Saskatchewan
- Saskatchewan/SGI
- Yukon

* At present, the Regulations do not apply in the territory of Nunavut, nor the requirement for ELDs.

Canadian Council of Motor Transport Administrators

<https://www.ccmta.ca/en/commercial-motor-vehicle-safety>

 To obtain an electronic copy, please email a request to: MVS-SA@tc.gc.ca

© His Majesty the King in Right of Canada, as represented by the Minister of Transport, 2022.
Cette publication est aussi disponible en français sous le titre Document sur les DCE pour les transporteurs routiers et les conducteurs.