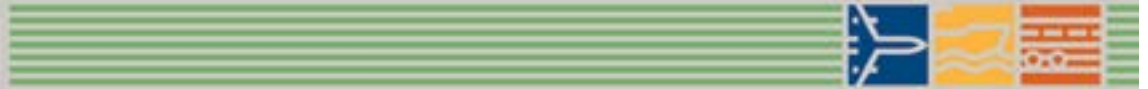




Transport
Canada

Transports
Canada



TP 6980E
(02/2014)

Feedback

Issue 2/2014

Canadian Aviation Service Difficulty Reports



Table of Contents

Heads up	1
Fixed Wing	2
Engines.....	11
Rotorcraft.....	12
Equipment Airworthiness Directives (ADS)	14
FAA Special Airworthiness Information Bulletins (SAIB).....	15
EASA Safety Information Bulletin (SIB).....	16
Service Difficulty Reports (SDR).....	17



Feedback is published quarterly by the Continuing Airworthiness Division of Transport Canada, informing the aviation community of reported day-to-day problems that affect aircraft airworthiness in Canada.

Reprints of original *Feedback* material are encouraged, but credit must be given to Transport Canada's *Feedback* magazine. Please forward one copy of the reprinted article to the Editor.

To obtain information concerning copyright ownership and restrictions on reproduction of the material, please address your correspondence to:

Jérémie Laviolette, Editor
Feedback
Transport Canada (AARDG)
Place de Ville, Tower C
Ottawa ON K1A 0N8

E-mail: jeremie.laviolette@tc.gc.ca
Tel.: 613-952-4360
Fax: 613-996-9178

To view *Feedback* online or to receive it electronically please visit:
www.tc.gc.ca/feedback-magazine

The articles contained in *Feedback* are derived from *Service Difficulty Reports* (SDRs) submitted by Aircraft Maintenance Engineers (AMEs), owners, operators and other sources in accordance with *Canadian Aviation Regulation* (CAR) 521.

SDRs are normally published verbatim. Transport Canada assumes no responsibility for the accuracy or content of any of these reports. Only spelling errors are corrected and content may be reduced as well as personal references deleted.

All defects or occurrences should be reported to Transport Canada through the Service Difficulty Reporting Program. For additional information about this program or concerning an article in *Feedback* magazine, contact your nearest Transport Canada Centre.

For all technical inquires related to articles of this magazine, please address your correspondence to CAWWebFeedback@tc.gc.ca

Feedback est aussi disponible en français.

© Her Majesty the Queen in Right of Canada, as represented by the Minister of Transport (2014).

ISSN 1925-8429 (Online)

TP 6980E
(02/2014)

TC-1005533

Overhauled Fire Extinguisher Bottle Found Serviced With Unknown Fluid

SDR submitted:

Upon disassembly of the extinguisher for overhaul, it was noted that the extinguisher was filled with an as yet unidentified liquid instead of the required Halon 1301.

Transport Canada Comments:

This fire extinguisher bottle had been sent for re-certification during an import inspection of the aircraft in which it was installed. The aircraft had previously been operated in Asia (where the bottle had been serviced).

Transport Canada would like to remind operators that not all 'non domestic' overhaul companies operate to the same standards as do Canadian organizations. It is important to carefully scrutinize aircraft and appliances that have undergone maintenance in unfamiliar overseas facilities.

AEROSPATIALE ATR 42-300

SDR # 20121119013

Nose Landing Gear Sheared Axle

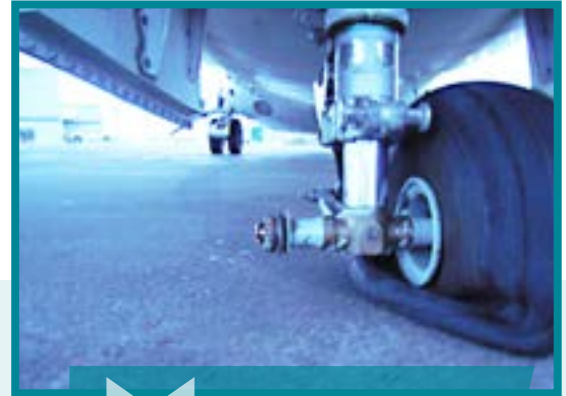
SDR submitted:

As the aeroplane was taxiing to position on runway 36 for departure, the right hand nose landing gear (NLG) wheel departed the nose gear due to a sheared axle.

Maintenance investigations revealed that the NLG axle failed at the inboard tire bearing, causing damage to the right hand gear door rod by the departing nose wheel assembly.

Transport Canada Comments:

Through discussions with the operator and the responsible type certificate holder, Aerospatiale, it was determined that ATR 42 Service Bulletin 32-0098 and ATR 72 Service Bulletin 32-1047 are applicable in addressing this type of NLG axle failure.



Sheared Nose Landing Gear Axle

BAE - UK 3112

SDR # 20131015001

Cracked Starter Generator Mounting Adapter

SDR submitted:

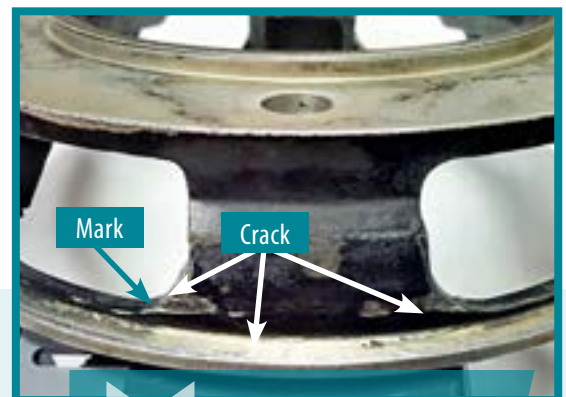
During a maintenance inspection on the left-hand engine starter generator assembly, the mounting adapter was found cracked through the web adjacent to a mounting hole.

The mounting adapter was replaced, making the aeroplane serviceable.

Transport Canada Comments:

As stated by BAE engineering, the build-up of tolerances can lead to a possible fouling condition between the starter generator end bell and support webs, resulting in the potential failure of the drive end bearing and support webs.

Service bulletin 24-JM7815 was introduced to prevent the described fouling condition, and calls for the replacement of the mounting adapter with a new modified mounting adaptor.



Engine Starter/ Generator Cracked Mounting Adapter

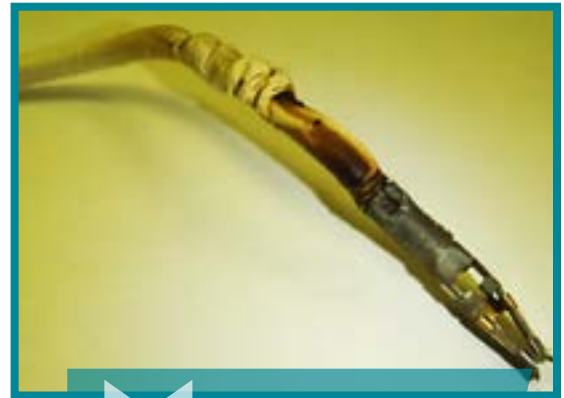
Windshield Heater Burnt Wiring

SDR submitted:

The crew reported that the windshield heater would no longer function. Maintenance troubleshooting revealed that the main cables that carry the high current (50Amps) for the windshield heater were overheated to the point of melting the outer shielding.

The failed wires in question go from the 50Amps circuit breakers to a large cannon plug then to the windshield where the wires pass through a cannon plug. The cannon plug pins were found to be loose thereby allowing electrical resistance and heat to build up. As a result, all pins and sockets were replaced.

The Service Difficulty Report submitter stated that this particular aeroplane is a standard factory design that has probably not been modified (pins replaced) since the aeroplane was manufactured.



Cannon Plug Wire Outer Shielding Melted

Transport Canada Comments:

Cannon plug pins tend to become loose over time and can cause electrical arcing which generates heat, corrosion pitting and burnt wires. This excessive heat can create a fire hazard thus maintainers must always be attentive to signs of overheating of wires and connectors.

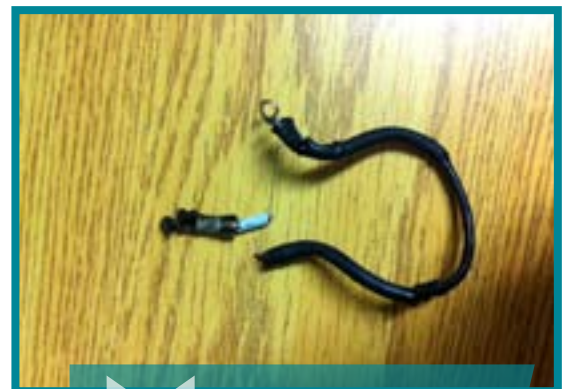
Propeller De-ice Brushes Wiring Failure

SDR submitted:

During the left hand engine change, it was noted that the terminal end of the propeller de-ice brushes (power wire) was defective. The wire was then cut so a new terminal end could be attached when it was noticed that there was a deep crack in the casing of the power wire.

After further investigation, it was found that these cracks ran the complete length of the power wire, 10 American Wire Gauge (AWG). This damage went from the brushes to the firewall connector. The ground cable was fine and had no damage.

These wires were wrapped and covered and contained in the main wire bundle for the engine. It appears the shorting at the terminal by the brushes and the overheating may have caused this damage.



10 Gauge Brush Block Wire Damaged From Overheating

Transport Canada Comments:

Further investigation revealed that the screw that attaches the wire to the brush block had arced and subsequently melted and then shorted the propeller de-ice system. The wiring was the original from 1984 and the age of the wire was the probable cause.

Cracked Horizontal Stabilizer Attach Angle

SDR submitted:

After previously discovering a crack in the horizontal stabilizer attach angle on another aeroplane, the operator amended their Beech 1900D maintenance program to carry out a repeat of mandatory service bulletin (MSB) 55-4114 even though the MSB describes a onetime inspection only.

While carrying out the borescope inspection, it was observed that there were two cracks visible on the left hand horizontal stabilizer attach angle. The first crack was coming from underneath the top rivet and the second crack was coming from beside the second rivet.

The defect was later confirmed by an eddy current inspection.

Transport Canada Comments:

Transport Canada Civil Aviation recommends operators of the Beech 1900 to carry out the inspection instructions detailed in the Hawker Beech Raytheon MSB 55-4114 and if required, adjust their respective maintenance programs accordingly.

Severe Fuselage Corrosion

SDR submitted:

Severe fuselage corrosion was found during a scheduled inspection of the fuselage at 3000 flight cycles. This extensive corrosion was found at area of Fuselage Station (FS) 265.750 to FS 273.520 and extended to fuselage lower longeron located at water line (WL) 119.

This area is located between the last cabin window and the cabin door. It is possible that over the years, water may have leaked and/or migrated into this specific area as this aeroplane had mostly been parked outside, exposed to the elements. Additionally, there is two strips of foam in this area believed to be used for noise suppression and/or insulation which may have trapped water in this immediate area.

The last 3000 flight cycle inspection was carried out some 4 years ago with no corrosion reported at the time.



Severe Surface Corrosion Discovered on the Fuselage Lower Longeron

Transport Canada Comments:

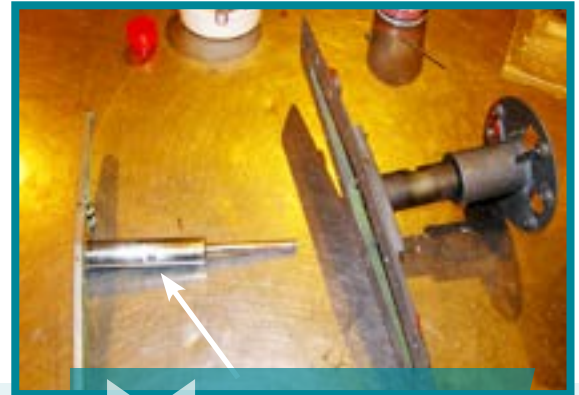
The storing and parking of aircraft inside can greatly reduce on onset of airframe corrosion.

Passenger Door Outer Handle Binding

SDR submitted:

The ramp crew reported that the main cabin door (MCD) outer handle would not release out when the release button was pressed. This prevented them from opening the door from the outside. Maintenance investigation found that the MCD outer handle shaft was slightly bent causing it to bind in the housing and preventing the handle from releasing when the release button was pressed.

The MCD outer handle and housing were replaced returning the aeroplane back to service.



Main Cabin Door Outer Handle with a Slight Bend in the Shaft

Transport Canada Comments:

A fault like this affects the functionality of an emergency exit where its operation may be jeopardized.

It is essential that outer handle faults like this are identified and corrected before any form of door operational interference is encountered in service.

Aileron Quadrant Bearings Corroded

SDR submitted:

The crew reported stiff roll control during flight. Following an uneventful landing, the crew did a functional aileron roll disconnect and found that the co-pilot control wheel was very stiff to operate.

Maintenance investigation discovered that the left hand wing aileron quadrant assembly was severely corroded and the quadrant bearings were seized. The aileron quadrant assembly was replaced and the aeroplane was returned to service.



Aileron Quadrant Bearings
Severely Corroded

Transport Canada Comments:

Transport Canada Civil Aviation recommends that these areas be frequently inspected to detect corrosion and that the quadrant bearings be lubricated. This is particularly important as the aeroplane ages in service.

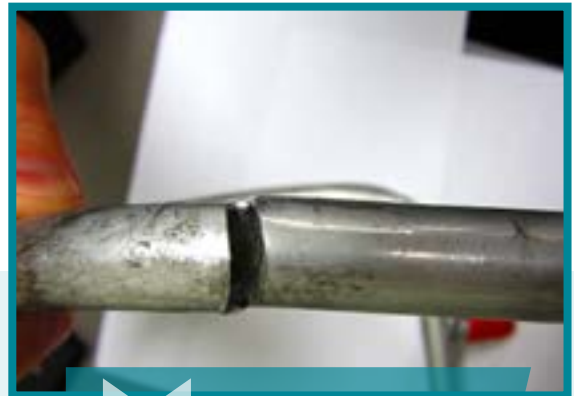
Improperly Installed Cable Cuts Through De-ice Tube

SDR submitted:

It was discovered that the left hand de-ice advisory lights on the overhead panel were not illuminating when the boots were inflated. Maintenance found that the de-ice tube that passes through the #1 nacelle was chaffed by a misrouted main landing gear alternate release cable. A new tube was installed and the cable re-rigged. Function checks found the systems serviceable.

Transport Canada Comments:

Having another qualified technician look over your work even though it may not be a Canadian Aviation Regulation (CAR) requirement (as in this case) is good practice and can help avoid situations like this one. Independent check requirements can be found in Standard 571.10, 'Types Of Work' of the CAR.



De-ice Tube Chaffed Through

Chaffed Hydraulic Line Leads to Loss of System

SDR submitted:

During cruise flight inbound to a maintenance base, the #1 hydraulic system lost all of its fluid which resulted in the loss of the #1 hydraulic services. The crew declared an emergency yet landed the aeroplane uneventfully (with flaps at zero and no normal brakes available). It had to be towed to the gate.

The maintenance investigation found the #1 hydraulic system case drain line was chaffed and leaking. The line was replaced along with the hydraulic pump and the aeroplane returned to service.



Chaffed Case Drain Line Where the Hydraulic Fluid Loss Occurred

Transport Canada Comments:

The operator informs Transport Canada that the area where this line is located has limited access and it is very difficult to install the clamps. It is possible that a clamp may have been out of position as a result of past maintenance events.

Maintainers of this type of aeroplane are cautioned to remain aware of this potential problem when performing difficult tasks in this or other hard to reach locations.

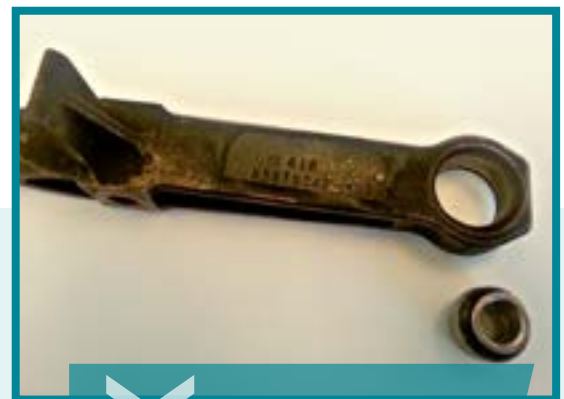
Engine Mount Bearing Wear

SDR submitted:

During a scheduled engine change on a DHC-8-300, one of the rear engine vertical struts was found with the bearing worn out way beyond limits. As a precaution, the company has initiated a fleet inspection of other DHC-8-300, as a result of this finding.

Transport Canada Comments:

Transport Canada Civil Aviation (TCCA) has been informed that other aeroplanes in this operator's fleet were found in a similar condition. The worn bearings were found on the left hand engine, inboard strut. TCCA would like to inform other carriers of this potential defect and recommend they look at this location when accessibility allows.



Worn Engine Mount Bearing
Part Number 87110047001

Blown Main Wheels on Take Off Roll

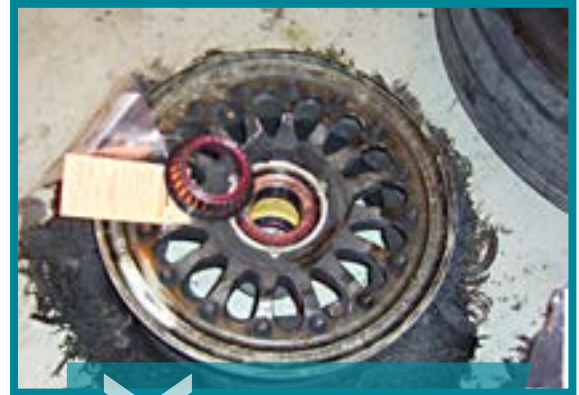
SDR submitted:

During the take off roll, at 100 knots, both the left hand and main tires blew. The crew rejected the take off and came to a stop on the runway. The hydraulic lines were torn and the flaps were damaged as a result of the blown tires. Maintenance changed the outbound left hand main wheel to facilitate moving the aeroplane to the hangar. The airport authority reported no debris on the runway that could have contributed to this failure.

Maintenance found 8 loose tie bolts on the left hand (L/H) outboard (O/B) main wheel. Both L/H main wheels and brake assemblies were replaced.

The cockpit voice recorder (CVR) and flight data recorder (FDR) were taken for readout. A borescope inspection of the L/H engine was completed with no faults found. The L/H propeller was inspected, the number 2 blade was replaced and the hub was repaired.

The L/H main landing gear (MLG) inboard (I/B) forward (fwd) door was found damaged and was replaced. The L/H MLG I/B and O/B aft doors were found damaged and were replaced. The L/H MLG shock strut aft fairings was found damaged and was replaced. The number one hydraulic system case drain filter line was found damaged and was replaced. The L/H O/B flap lower skin was dented but was within structural repair manual (SRM) limits. The L/H I/B flap was found damaged and was replaced.



Blown Main Wheel Assembly
Part Number 315731

Transport Canada Comments:

The maintenance instructions for these wheel assemblies had recently changed (torque values and assembly procedures). While this may or may not be a contributing factor in this incident, it is important to be aware of and follow the latest maintenance instructions.

Cracked Rudder Pedal

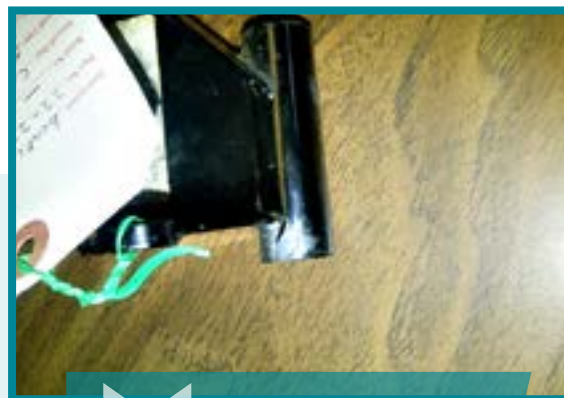
SDR submitted:

During a general aeroplane inspection in order to apply an inspection tolerance for aircraft scheduling, the left hand brake pedal attached to the left rudder pedal assembly was found cracked at the pivot tube.

Transport Canada Comments:

Transport Canada Civil Aviation (TCCA) has seen similar instances in the past. In communicating with the manufacturer (Diamond Aircraft), TCCA would like to remind operators that Diamond Aircraft has issued Service Information Letter (SIL) 20C1-003 & Temporary Revision (TR) 12-01 that addresses this issue. The SIL is available to the public on Diamond's website at the following address:

www.diamondaircraft.com/aircraft/da20/technical.php#cat-21



Rudder Pedal Cracked At Pivot Attach Point

Cracked Aileron Spar

SDR submitted:

A small crack was noticed by maintenance on the right-hand (R/H) aileron, just aft of the out-board (o/b) hinge. Upon further inspection it was found that the attaching structure for the o/b aileron hinge bracket (aileron side) was cracked and a large piece of metal had broken off.

The R/H aileron was removed and a serviceable aileron panel assembly was installed, making the aeroplane serviceable.

Transport Canada Comments:

Federal Aviation Administration (FAA) Special Airworthiness Information Bulletin (SAIB) CE-13-42 was released defining this possible condition. Original Equipment Manufacturer (OEM) and M7 Aerospace have also issued Service Letters (SL) 226-SL-045, SL 227-SL-060 and SL CC7-SL-053.



Cracked Forward Aileron Spar

Hydraulic Pump Case Failure

SDR submitted:

During cruise flight at 16 000 feet, the pilots observed the port hydraulic system low flow light had illuminated, followed by the starboard hydraulic system low flow light.

The aeroplane returned, carried out an uneventful landing and taxied to the hanger using normal nose wheel steering & braking.

Maintenance found the port engine gearbox hydraulic pump had a crack in the outer case that started at one of the rear case plug holes.

Maintenance replaced the hydraulic pump, serviced the hydraulic system and carried out all required leak and functional checks, making the aeroplane serviceable.



Hydraulic Pump Case Crack Causing Hydraulic Fluid Loss

Cracked Cabin Window

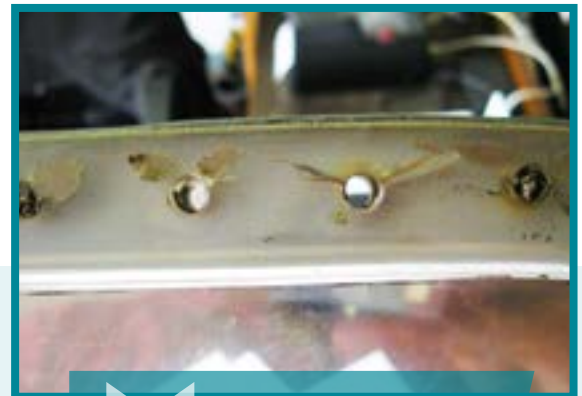
SDR submitted:

Upon performing a prism inspection of the cabin windows, cracks were discovered at several window attachment holes for several cabin windows.

The window assemblies were all replaced, making the aeroplane serviceable.

Transport Canada Comments:

Through discussions with Learjet Engineering, the responsible type-certificate holder, it has been confirmed that this double pane cabin window design is such that if one pane should fail, the remaining pane would support the cabin pressure load. Learjet has included a 2400 flight hour recommended inspection task and has made available a product improvement for all replacement cabin windows.



Cracked Cabin Window Attachment Holes

ALLISON, AE-3007A1/3

SDR # 20121126007

Improper Tooling Causing Damage

SDR submitted:

The engine was removed due to smoke after shutdown and was returned to the shop. During the shop visit inspection, the fuel manifold was found with a severe cut that reduced the fuel tube wall thickness. No holes at the damaged area were observed. The right hand discharge tube looks newly installed and is adjacent to the severely damaged fuel manifold.



Fuel Discharge Tube Showing Obvious Damage

Transport Canada Comments:

It was stated that the damage appeared to be caused by a cutting wheel used during a past modification. No record of the work performed was found in the log book. Transport Canada Civil Aviation would like to remind maintainers that all work must be documented and that approved tooling and procedures must be followed.

DIAMOND - CANADA, DA20-C1, TELEDYNE CONTINENTAL IO-240-B.

SDR # 20140227004

Material Found In Engine Fuel Hose

SDR submitted:

During a 300 hour inspection, the engine driven fuel pump inlet filter was removed as per Diamond maintenance manual. A large piece of rubber was found in the filter that was blocking approximately two thirds of the filter. Maintenance checked the hose between the engine and firewall and found that the firewall end of the hose had a piece of rubber covering over 50 per cent of the internal diameter of the hose. It would appear that the internal rubber had been cut during the manufacture of the hose. The hose was manufactured in April 2011 specifically for the engine. An inspection of another hose from the same batch is underway.



Internal View of Hose Showing Partial Blockage

Transport Canada Comments:

The batch inspection revealed that this incident was an isolated case. Production techniques were reviewed and found to be acceptable. It serves as a reminder to us that all parts received must be carefully inspected prior to installation on an aeronautical product.

BELL TEXTRON - CANADA, 206L-4

SDR # 20140127001

Tail Rotor Blade Bolt Sheared

SDR submitted:

In flight, the pilot could feel vibrations in the airframe and decided to land. The aircraft maintenance engineer (AME) inspected the airframe, including removal of the driveshaft covers and cowls as required and a detailed inspection of the tail rotor and drive system was accomplished. A test flight was conducted but the vibration was still present. Further inspection found a sheared tail rotor blade bolt. The tail rotor blades and hub were removed and inspected. All 4 blade bolts were replaced. The entire drive system was inspected and a tail rotor dynamic balance was completed to satisfaction.



Tail Rotor Blade Bolt Sheared

Transport Canada Comments:

This NAS6606D36 bolt was inspected during the last tail rotor yoke overhaul and no discrepancies were noted. The operator updated their maintenance schedule to replace all tail rotor yoke hardware upon inspection. The subject bolt has been sent to Bell for further analysis.

BELL TEXTRON - CANADA, 407

SDR # 20140224021

Uncontrollable Engine Fuel Shut Off

SDR submitted:

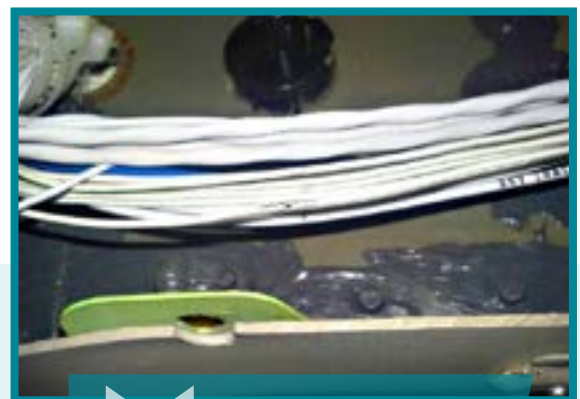
On approach for landing the aircraft encountered a flame out condition caused by fuel starvation. After troubleshooting the issue, it was discovered that the fuel valve was closing uncontrollably due to the fuel valve switch close coil wire chaffing against a screw on the 28v bus bar in the overhead breaker panel.

Transport Canada Comments:

The wiring harness increased in size due to the incorporation of four supplemental type certificates (STC) which were installed with inadequate clearance due to insufficient clamping and lacing.

The operator has since installed proper spiral wrap and secured the harness properly to preclude this event from recurring and added a repetitive inspection of the panel at 100 hour intervals to their maintenance program.

This event could have been catastrophic. A sobering reminder of the importance of proper maintenance practices!



Chaffed Wire in Circuit Breaker Panel

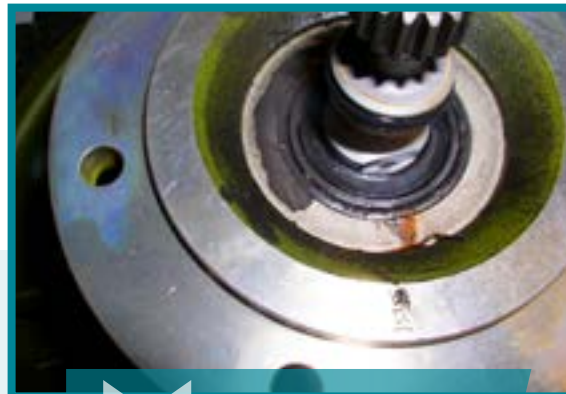
Combining Gearbox(C-Box) Oil Cooler Fan Failure

SDR submitted:

On a combining gear box removal, the Aircraft Maintenance Engineer (AME) noticed a large amount of black fretting material between the C-Box and the blower joint flange. Once cleaned up, the AME was able to see that the outer race of the bearing on the blower was rotating in the blower casting. The blower was removed and will be replaced with serviceable unit.

Transport Canada Comments:

Tear down analysis of the oil cooler fan determined that bearing did in fact rotate in the liner housing. The overhaul facility has received approval from Bell Helicopter to install the bearing using Loctite adhesive and has proven to be more effective.



Oil Cooler Fan Bearing Failure

EQUIPMENT AIRWORTHINESS DIRECTIVES (ADS)

Transport Canada (TC) endeavours to send copies of new Airworthiness Directives (ADs), which are applicable in Canada to the registered owners of the affected products. Equipment/appliance ADs are often only distributed to our regional offices because the owners of aircraft affected by this type of AD are not generally known.

Aircraft Maintenance Engineers (AMEs) and operators of the affected products are encouraged to obtain further information or a copy of the ADs from their regional TC office, their local Transport Canada Centre (TCC), their Principal Maintenance Inspector (PMI), or from the Civil Aviation AD website at: www.tc.gc.ca/cawis-swimn

Manufacturer	AD Number	Origin	Description
HR SMITH	2014-0019	Europe	Superseded by EASA AD 2014-0095
STC SA04-74 STC ST00284BO STC ST02887AT	03/19/14	United States	Cracks in the in-flight entertainment system radome assembly
STC ST01219SE	04/05/14	United States	Chaffing, arcing, and burning damage to the control cabin overhead wiring and ducting
ROCKWELL COLLINS	05/27/14	United States	Correct possible misalignment issues with the transponders
STC SE09773SC STC SE4985NM SUPERIOR	05/29/14	United States	Separation of the cylinder head

FAA SPECIAL AIRWORTHINESS INFORMATION BULLETINS (SAIB)

A Federal Aviation Administration (FAA) SAIB is an information tool that alerts, educates, and makes recommendations to the general aviation community. It is non-regulatory information and guidance that does not meet the criteria for an Airworthiness Directive (AD). www.faa.gov/aircraft/safety/alerts/SAIB/

SAIB Number	Make/Company	Subject	Issue Date
CE-14-18	Rust, Robert E.	Horizontal Stabilizer Miscellaneous Structure – Tailplane Attach Fitting Cracks and Misassembled Fitting Installation	05/15/14
CE-14-17	Cessna Aircraft Company	Landing Gear; Main Landing Gear (MLG) Actuator	05/06/14
HQ-14-16	Fasteners	Standard Hardware, AN, MS and NAS Fasteners	04/28/14
NE-14-15	Hartzell Propeller, Inc.	Propeller Controlling System	04/18/14
NE-14-14	Sikorsky Aircraft Corporation	Powerplant - Salt Encrustation	04/14/14
CE-14-09R1	Good Earthkeeping Organization Inc	Luscombe Model 8A Fuel System	03/28/14
NE-14-13	Lycoming Engines	Reciprocating Engine - Cylinder Mounting Studs	03/24/14
CE-14-12	Mooney International Corporation	Landing Gear System	03/14/14
CE-14-11	Cessna Aircraft Company	Landing Gear; Nose Landing Gear Trunnions	02/25/14
NE-14-10	Merl, Inc.	Emergency Locator Beacon	02/24/14

A European Aviation Safety Agency (EASA) SIB is an information tool that alerts, educates, and makes recommendations to the general aviation community. It is non-regulatory information and guidance that does not meet the criteria for an Airworthiness Directive (AD). <http://ad.easa.europa.eu/sib-docs/page-1>

SAIB Number	Make/Company	Subject	Issue Date
2014-16		Aeroplane Refuelling with One Engine Running	05/23/14
2014-14		Controller Pilot Data Link Communications over Very High Frequency Data Link Mode 2 (CPDLC over VDL Mode 2)	05/23/14
2014-15		Controller Pilot Data Link Communications (CPDLC) - Data Link : Instruction to turn a specified number of degrees left or right (UM 215)	05/23/14
2014-13	GAS Manufacturing Ltd.	Unapproved Parts Notification - Galley Waste Carts	05/08/14
UPN2014-2014NM460011		Multi-axis G-Switches used with Ameri-King Corp. Emergency Locator Transmitters (ELTs)	05/08/14
2014-12		Non-conforming Standard Hardware	05/06/14
2014-11		Notification of Suspected Unapproved Parts	05/01/14
2014-09		Aeroplane Go-Around Training	04/08/14
2014-10		Simferopol Flight Information Region (FIR)	04/03/14
UPN2014-2013NM510030	Avion Research Corp.	Control Wheels, Glare Shields and Instrument Panels - without FAA production approval	04/03/14
2014-07		Unexpected Autopilot Behaviour on Instrument Landing System (ILS) Approach	03/25/14
2014-08	Boeing	Approval for Cold Soaked Fuel Frost Dispatch	03/24/14
2014-06		ATC Communications to Aircraft Flight Crew during Missed Approach	03/20/14
SAFO14001	Cessna Aircraft Company	Cessna 500, 501, 550, S550, 551 and 560 - Aileron Trim System	03/10/14
UPN2014-20130520002	General Electric	CT7 Engines - First Stage Hangers P/N 6068T26G11 without FAA Production Approval	03/10/14

SERVICE DIFFICULTY REPORTS (SDR)

LEGEND

JASC: Joint Aircraft System Code number defining assembly/system/components

SDR No.: Transport Canada Civil Aviation (TCCA) assigned SDR control number — please quote in any correspondence or inquiries

Region (RGN): TCCA region of SDR submitter:

PAC = Pacific

ONT = Ontario

ATL = Atlantic

VAR = Various

PNR = Prairie and Northern

QUE = Quebec

NCR = Ottawa (Headquarters)

QUE = Quebec

AIRCRAFT

AEROSPATIALE

Make/Model	Jasc	Part Name	Part Number	Part Condition	SDR No.	RGN
AS 350B	6520	CONTROL LEVER TAIL ROTOR PITCH	350A33105803X	UNSERVICEABLE	20140319006	PAC
AS 350B2	6220	SPHERICAL STOP	704A336332	DELAMINATED	20140204011	PNR
AS 350B2	6220	STARFLEX	350A3119170151	DEBONDED	20140214005	PNR
AS 350B2	6520	GEAR BOX	350A33020005	LEAKING	20140110004	QUE
AS 350B3	1410	HYDRAULIC HOSE	704A34412271	LEAKING	20140113007	QUE
AS 350B3	2913	PULLEY	350A35102220	UNSERVICEABLE	20140318012	PAC
AS 350B3	3211	AFT CROSSTUBE	D350748201	NEW	20140125004	PNR
AS 350B3	3411	PITOT HEAD	334941	NEW	20140125003	PNR
AS 350B3	6320	PHONIC WHEEL	350A37128901	LOOSE	20140307002	QUE
AS 350B3	8310	SPACER ASSEMBLY	350A37128901	GOOD	20140218008	ONT
AS 355NP	8300	PINION HYDRAULIC PUMP	355A32211000	SHEARED	20140128017	PNR
ATR 42 300	3200	LANDING GEAR		FAILED	20140326018	ONT
ATR 42 300	3213	SIDE BRACE LOWER ARM	D567791	DAMAGED	20140313009	PNR
ATR 42 300	3246	BRAKE ASSEMBLY	50068571	FROZEN	20140225016	QUE
ATR 42 320	2820	FUEL TANK FLAPPER VALVES		BAD INSTALL	20140307007	ONT
ATR 42 500	2720	TORQUE TUBE RUDDER	S2728171100600	CRACKED	20140127002	QUE
ATR 72 202	7712	TORQUE INDICATOR	56777558011	UNSERVICEABLE	20140123002	PNR

AGUSTA

Make/Model	Jasc	Part Name	Part Number	Part Condition	SDR No.	RGN
AW119 MK II	6321	ROTOR BRAKE FLANGE	109040803101	DAMAGED	20140127011	ONT
AW139	5610	WINDOW	3G5211A00551	NEW	20140103006	ONT

AIR TRACTOR

Make/Model	Jasc	Part Name	Part Number	Part Condition	SDR No.	RGN
AT 401	5720	ANGLE BRACKET	206921	CRACKED	20140312009	PNR

AIRBUS

Make/Model	Jasc	Part Name	Part Number	Part Condition	SDR No.	RGN
A310 308	2997	SUPPORT RAMP	A924225990000000	ARCING	20140124006	QUE
A310 308	5350	FAIRING	A5357506200100	RUPTURED	20140124007	QUE
A319 114	2900	HYDRAULIC SYSTEM		FAILED	20140109001	QUE
A319 114	2913	HYDRAULIC PUMP	3031863001	FAILED	20140220001	QUE
A319 114	5230	CARGO DOOR		LEAKING	20140224022	QUE
A319 114	5532	LEADING EDGE PANEL		DELAMINATED	20140217017	QUE
A320 211	2150	AIR CYCLE MACHINE	1263A000002	SEIZED	20140108005	QUE
A320 211	2300	RADIO MANAGEMENT PANEL		FAILED	20140108004	QUE
A320 211	2621	CARGO FIRE EXT BOTTLE	34600017	FAILED	20140128004	QUE
A320 211	2750	FLAP SYSTEM		FAILED	20140310002	QUE
A320 211	2910	HYDRAULIC TUBE	2380658501	FAILED	20140224023	QUE
A320 211	2913	HYDRAULIC PUMP	3031863001	LEAKING	20140320002	QUE
A320 211	3246	MAIN WHEEL		FAILED	20140225013	QUE
A320 214	2910	PIPE		LEAKING	20140103007	QUE
A321 211	2120	CABIN & FLIGHT DECK		SMELL	20140217011	QUE
A321 211	2120	SKIN AIR OUTLET VALVE	VFT300B00	FAILED	20140120006	QUE
A321 211	2700	ELEVATOR-AILERON COMPUTER #1		FAILED	20140120007	QUE
A321 211	3260	PROXIMITY SENSOR		FAILED	20140103001	QUE
A321 211	520	CABIN SMELL		SMOKE	20140318005	QUE
A321 211	5230	AFT SEAL		DISLODGED	20140103008	QUE
A330 243	2910	MANIFOLD GND SERV	709023	RUPTURED	20140226009	QUE
A330 343	2520	SMART VIDEO DISPLAY UNIT	179000201	FAILED	20140325004	QUE
A330 343	3140	DISPLAY MANAGEMENT COMPUTER	96154570512X	FAILED	20140103012	QUE
A330 343	3520	O2 GENERATOR	11704202	FAILED	20140204005	QUE

AMERICAN AVIATION

Make/Model	Jasc	Part Name	Part Number	Part Condition	SDR No.	RGN
AA 1	3210	RIGHT-HAND BRACKET ASSEMBLY	701063502	CORROSION	20140318009	PAC

BAE - (RAYTHEON)

Make/Model	Jasc	Part Name	Part Number	Part Condition	SDR No.	RGN
BAE 125 800A	2760	SWITCH	1322ZMK3	FAILED	20140303002	ONT

BEECH

Make/Model	Jasc	Part Name	Part Number	Part Condition	SDR No.	RGN
100	3020	TUBE HORIZONTAL STABILIZER DE-ICER	50970101	SPLIT	20140110010	PNR
1900C	2121	BLOWER ASSEMBLY	114380028	BURNT BRUSHES	20140109002	PNR
1900D	2216	ELEVATOR TRIM SERVO	6225734002	FAULT	20140218002	ATL
1900D	2842	FLOAT VALVE ASSEMBLY	1183810021	UNSERVICEABLE	20140121006	ONT

Make/Model	Jasc	Part Name	Part Number	Part Condition	SDR No.	RGN
1900D	5540	RIB CLOSURE	13063000055	MISSING RIVETS	20140128012	ATL
200	2433	LEFT-HAND BUS LIMITER		UNSERVICEABLE	20140327005	PNR
200	2600	FIRE DETECTOR	302158	UNSERVICEABLE	20140317007	PAC
200	5245	FLAPPER VALVE ASSEMBLY	13022	SCRAP	20140225015	PNR
200	5610	SEAL	1014201261	FLATTENED	20140303015	PAC
200	5711	LEFT-HAND FORWARD SPAR LOWER SPAR CAP	10112001919	CRACKED	20140327010	PNR
200	5711	LEFT-HAND FORWARD SPAR LOWER SPAR CAP	10112001921	CRACKED	20140327009	PNR
A100	3230	HOOK-DOWN LOCK	508103383	BROKEN	20140327006	PNR
A100	7120	ENGINE MOUNT	59910279	CORRODED	20140305007	QUE
A36	3243	O-RING	10150353	NEW	20140225022	ONT
A36	5347	HUCK BOLT(S)		ORIGINAL	20140211011	ONT
B200	3230	MOTOR	571302	UNSERVICEABLE	20140326025	PNR
B200	5220	SKIN ASSEMBLY DOOR EXIT	115430100153	CRACKED	20140127012	PNR
B300	5210	DOOR		BROKEN	20140217024	PAC
B300C	3260	DOWN LOCK MICROSWITCH	1013646281	UNSERVICEABLE	20140115002	ATL
C90A	2752	PISTON	505211958	CRACKED	20140212004	PNR
C90A	3230	HYDRAULIC POWER PACK	9938800215	FAILED	20140227003	ATL

BELL TEXTRON - CAN

Make/Model	Jasc	Part Name	Part Number	Part Condition	SDR No.	RGN
206L 3	7313	FUEL NOZZLE	M25010604	SERVICEABLE	20140314017	ONT
206L 4	6420	BOLT	NAS6606D36	SHEARED	20140127001	PNR
206L 4	6420	PLUG		LEAKING	20140109003	QUE
206L 4	6420	VAN HORN	2062200301	NEW	20140325006	PNR
407	2823	WIRE	206063640109	CHAFFING	20140224021	PNR
407	6310	CHIP DETECTOR HOUSING	B47131	CRACKED	20140328008	PAC
407	6320	OIL DRAIN PLUG	2G687	USED	20140318008	PNR
407	6410	MAIN ROTOR BLADE	407015001137	CRACKED	20140326021	QUE
407	6410	MAIN ROTOR BLADE	407015001137	CRACKED	20140326022	QUE
429	7600	THROTTLE CABLE	7459311	FROZEN	20140206003	QUE
429	8000	#2 STARTER GENERATOR		FAILED	20140120016	QUE

BELL TEXTRON - USA

Make/Model	Jasc	Part Name	Part Number	Part Condition	SDR No.	RGN
204	1000	BOLT	NAS66051	NEW	20140314016	ONT
212	6320	SPIDER ASSEMBLY	412040785103	BROKEN	20140203025	PAC
412CF	7921	BLOWER ASSEMBLY	212062514101	BEARING FAILED	20140224024	QUE
412CF	7921	BLOWER ASSEMBLY	212062514101	BEARING FAILED	20140305006	QUE

BOEING

Make/Model	Jasc	Part Name	Part Number	Part Condition	SDR No.	RGN
727 223	3220	ROD ASSEMBLY	69353703	SHEARED	20140225024	PAC
727 223	3610	COUPLING	BACC10DU450	FAILED	20140113003	ONT
737 242C	2780	TRACK ASSEMBLY	65494489	USED	20140110009	PNR

Make/Model	Jasc	Part Name	Part Number	Part Condition	SDR No.	RGN
737 248C	2900	HOSE ASSEMBLY	AE1004731E0130	FAILED	20140130013	ONT
737 248C	3040	WINDOW HEAT CONTROLLER	2312	SHORTED	20140311010	ONT
737 2S2C	2751	PROXIMITY SWITCH	189915	FAILED	20140225014	ONT
737 36Q	3246	TIE BOLT	2602540	FAILED	20140311005	PNR
737 6CT	2133	PRESSURIZATION SYSTEM		FAILED	20140123009	PNR
737 6CT	3230	MICRO SWITCH	MS250114	FAILED	20140327012	PNR
737 6CT	3260	PROXIMITY SENSOR ELECTRONIC UNIT	285A16006	FAILED	20140220003	PNR
737 76N	2121	RECIRCULATION FAN	6454052	FAILED	20140325003	PNR
737 76N	2530	COFFEE MAKER	64753001005	FAILED	20140204002	PNR
737 76N	2751	FLAP POSITION TRANSMITTER		FAILED	20140317006	PNR
737 76N	7600	ENGINE CONTROLLER		FAILED	20140203023	PNR
737 7CT	2130	PACK FLOW CONTROL SHUT-OFF VALVE	3964982	FAILED	20140115001	PNR
737 7CT	2150	AIR CYCLE MACHINE	22064002	SEIZED	20140102002	PNR
737 7CT	2820	FUEL SYSTEM		LEAKING	20140121005	PNR
737 7CT	3160	DISPLAY ELECTRONIC UNIT	4081600930	FAILED	20140120015	PNR
737 7CT	3242	BRAKE ASSEMBLY	26123121	FAILED	20140312006	PNR
737 7CT	3421	INTEGRATED STANDBY DISPLAY	C16786HA02	FAILED	20140313014	PNR
737 7CT	3610	PRECOOLER VALVE	32895626	FAILED	20140320007	PNR
737 7CT	520	CABIN		SMOKE	20140225012	PNR
737 7CT	520	CABIN AREA		SMOKE	20140303004	PNR
737 7CT	5610	#2 WINDOW GLASS	58935588	SHATTERED	20140129007	PNR
737 7CT	5610	WINDOW ASSEMBLY	5893543149	SHATTERED	20140325001	PNR
737 8BK	3211	TRUNNION PIN	161A11883	CORRODED	20140327001	ONT
737 8CT	3340	PRINTED BOARD ASSEMBLY	723252151	BURNT	20140307003	PNR
737 8CT	3610	PRESSURE REGULATOR AND SHUT-OFF VALVE	32145526	FAILED	20140217008	PNR
737 8K5	3610	BLEED SYSTEM		FAILED	20140314018	ONT
757 236	3610	DUCT	212N30433	RUPTURED	20140226004	ONT
757 2B7	5610	WINDSHIELD	141T480013	CRACKED	20140127009	PNR
767 223	2910	MODULE ASSEMBLY - MAIN HYDRAULIC	271T00687	FAILED	20140106003	ONT
767 333	3241	HOSE	AS11506K0264	FAILED	20140225005	QUE
767 375	2120	CABIN & FLIGHT DECK		SMELL	20140217021	QUE
767 375	2721	RUDDER TRIM ACTUATOR	658D1005	SHEARED RIVETS	20140327007	QUE
767 375	2780	SLAT SYSTEM		FAILED	20140319001	QUE
767 375	3240	RING	A35668	ROTATED	20140121003	QUE
767 375	3600	BLEED SYSTEM		FAILED	20140206004	QUE

BOMBARDIER

Make/Model	Jasc	Part Name	Part Number	Part Condition	SDR No.	RGN
BD 100 1A10	2312	AUDIO CONTROL		FAILED	20140124026	QUE
BD 100 1A10	2421	GENERATOR	A3579	FAILED	20140228002	ONT
BD 100 1A10	2436	DIREC-CURRENT POWER CENTER (DCPC)	970GC02Y06	FAILED	20140130003	QUE
BD 100 1A10	2711	AILERON SYSTEM		JAMMED	20140211004	QUE

Make/Model	Jasc	Part Name	Part Number	Part Condition	SDR No.	RGN
BD 100 1A10	2750	FLAP CONTROL UNIT	2257A000003	FAILED	20140103003	QUE
BD 100 1A10	3197	ADAPTIVE FLIGHT DISPLAY	8221577012	SHORTED	20140109004	QUE
BD 100 1A10	3610	BLEED AIR VALVE	60081A020000	FAILED	20140217015	PNR
BD 700 1A11	1000	CASTELLATED NUT	MS17825	SHEARED	20140311004	ONT
CL600 2B19 (RJ100)	2110	TEMPERATURE SENSOR		FAILED	20140306008	QUE
CL600 2B19 (RJ100)	2216	YAW ACTUATOR	DL2233M11	FAILED	20140317003	QUE
CL600 2B19 (RJ100)	2750	FLAP ELECTRONIC CONTROL UNIT	860D10018	FAILED	20140203021	QUE
CL600 2B19 (RJ100)	2750	FLAP ELECTRONIC CONTROL UNIT	860D10018	FAILED	20140219002	QUE
CL600 2B19 (RJ100)	2750	FLAP SYSTEM		FAILED	20140128002	ATL
CL600 2B19 (RJ100)	2750	FLAP SYSTEM		FAILED	20140318006	QUE
CL600 2B19 (RJ100)	2751	BRAKE AND POSITION SENSING UNIT		FAILED	20140203022	QUE
CL600 2B19 (RJ100)	2751	FLAP POSITION TRANSMITTER	601R930301	FAILED	20140128007	QUE
CL600 2B19 (RJ100)	2910	HYDRAULIC LINE	601R752863	LEAKING	20140127008	ATL
CL600 2B19 (RJ100)	3230	GEAR SELECTOR VALVE		FAILED	20140226011	QUE
CL600 2B19 (RJ100)	3230	NOSE LANDING GEAR SELECTOR VALVE		FAILED	20140226012	QUE
CL600 2B19 (RJ100)	3230	NOSE LANDING GEAR SELECTOR VALVE	601R751461	FAILED	20140304009	QUE
CL600 2B19 (RJ100)	3230	PRIORITY VALVE		FAILED	20140226013	QUE
CL600 2B19 (RJ100)	3230	SENSOR BRACKET		DAMAGED	20140128008	QUE
CL600 2B19 (RJ100)	3244	TIRE	299K631	BURST	20140113005	ATL
CL600 2B19 (RJ100)	3246	INBOARD CONE BEARING	JLM813049	FAILED	20140211006	QUE
CL600 2B19 (RJ100)	3510	CREW OXYGEN BOTTLE	89793050	FAILED	20140203024	ATL
CL600 2B19 (RJ100)	4920	AUXILIARY POWER UNIT	38421322	FAILED	20140121007	QUE
CL600 2B19 (RJ100)	5210	ROD	601R386493	BROKEN	20140207004	PNR
CL600 2B19 (RJ100)	5220	FRAME	601R3112399	CRACKED	20140124015	ONT
CL600 2B19 (RJ100)	5310	PRESSURE FLOOR		CRACKED	20140304006	ONT
CL600 2B19 (RJ100)	5415	STRUCTURE	601370191001	CRACKED	20140124013	ONT
CL600 2B19 (RJ100)	5610	RIGHT-HAND WINDSHIELD	NP13932112	CRACKED	20140213004	QUE
CL600 2B19 (RJ100)	5610	WINDOW SIDE (RIGHT-HAND)	601R3303312	CRACKED	20140304008	QUE
CL600 2B19 (RJ100)	5610	WINDOW SIDE (RIGHT-HAND)	NP13932110	CRACKED	20140131007	QUE
CL600 2B19 (RJ100)	5610	WINDSCREEN	610R3303317	ARCING	20140310008	ATL
CL600 2B19 (RJ100)	7830	PNEUMATIC DRIVE UNIT	1267587	FAILED	20140203020	QUE
CL600 2C10 (RJ700)	2130	PRESSURE CONTROLLER		FAILED	20140203017	QUE
CL600 2C10 (RJ700)	2133	SAFETY VALVE	GG670980051	FAILED	20140304004	QUE
CL600 2C10 (RJ700)	2150	AIR CYCLE MACHINE	GG670950095	SEIZED	20140210002	QUE
CL600 2C10 (RJ700)	2213	FLIGHT DIRECTOR		FAILED	20140207003	QUE
CL600 2C10 (RJ700)	2530	COFFEE POT		FOREIGN OBJECT DEBRIS	20140314013	QUE
CL600 2C10 (RJ700)	2720	RUDDER LIMITER ARM	BA670934755	DEFORMING	20140327002	QUE
CL600 2C10 (RJ700)	2721	YAW DAMPER ACTUATORS		FAILED	20140204010	QUE
CL600 2C10 (RJ700)	2730	ELEVATOR SERVO	6225022101	FAILED	20140121004	QUE
CL600 2C10 (RJ700)	3252	SHIMMY DAMPER	49800	FAILED	20140317009	QUE
CL600 2C10 (RJ700)	5220	ESCAPE HATCH		LEAKING	20140306010	QUE
CL600 2C10 (RJ700)	5341	KEELBEAM LINK COTTER PIN		SHEARED	20140218011	QUE

Make/Model	Jasc	Part Name	Part Number	Part Condition	SDR No.	RGN
CL600 2C10 (RJ700)	5610	LEFT-HAND SIDE WINDOW	NP13932211	FAILED	20140317004	QUE
CL600 2C10 (RJ700)	5610	LEFT-HAND WINDSHIELD	NP13932113	DELAMINATED	20140206002	QUE
CL600 2C10 (RJ700)	5610	RIGHT-HAND WINDSHIELD	NP139321003	CRACKED	20140106005	QUE
CL600 2C10 (RJ700)	5741	COTTER PIN		SHEARED	20140218010	QUE
CL600 2D15 (705)	3010	TELESCOPING DUCT	GG670800144	FAILED	20140122006	ATL
CL600 2D15 (705)	5610	WINDSHIELD	601R3303321	CRACKED	20140218003	ATL
CL600 2D15 (705)	5741	BUSHING	CC670102113	CRACKED	20140212001	ATL
CL600 2D24 (RJ900)	2110	AIR CYCLE MACHINE		FAILED	20140203019	QUE
CL600 2D24 (RJ900)	2110	AIR CYCLE MACHINE	GG670950095	LEAKING	20140115006	QUE
CL600 2D24 (RJ900)	2110	AIR CYCLE MACHINE	GG670950095	SEIZED	20140120004	QUE
CL600 2D24 (RJ900)	2150	AIR CYCLE MACHINE		FAILED	20140303019	QUE
CL600 2D24 (RJ900)	2213	FLIGHT CONTROL PANEL	8220044001	FAILED	20140306007	QUE
CL600 2D24 (RJ900)	2213	FLIGHT CONTROL PANEL	8220044001	UNCOMMANDED	20140306006	QUE
CL600 2D24 (RJ900)	2731	POWER CONTROL UNIT ROD ENDS		BROKEN	20140120008	QUE
CL600 2D24 (RJ900)	2750	FLAP SYSTEM		FAILED	20140314014	QUE
CL600 2D24 (RJ900)	3310	FLOOD LIGHT		SHORTED	20140204007	QUE
CL600 2E25 (RJ1000)	3610	O-RING	MS9068038	FAILED	20140131008	QUE

BURKHART GROB

Make/Model	Jasc	Part Name	Part Number	Part Condition	SDR No.	RGN
G115C	2842	IMMERSION TUBE	6080101003	SEPARATED	20140130011	ONT

CANADAIR

Make/Model	Jasc	Part Name	Part Number	Part Condition	SDR No.	RGN
CL215 6B11(CL415)	3246	WHEEL OUTER BEARING	39560038395CP	DISINTEGRATED	20140106010	QUE
CL215 6B11(CL415)	7900	OIL LINE	215T6301066	UNSERVICEABLE	20140115003	ATL
CL600 1A11(600)	7830	THRUST REVERSER		FAILED	20140106008	ONT
CL600 2B16(604)	2460	VOLT/FREQUENCY SENSOR	VS403	BURNT	20140225010	QUE
CL600 2B16(604)	2760	GROUND SPOILER MANIFOLD	600751247	FAILED	20140217020	PNR
CL600 2B16(604)	3397	LOGO LIGHTS		FAILED	20140120020	ONT
CL600 2B16(604)	5753	INBOARD FLAP TRACK FASTENERS	TBD	BROKEN	20140227001	ONT
CL600 2B16(604)	7600	THROTTLE CONTROL GEARBOX	2100140005	FAILED	20140319005	QUE

CESSNA

Make/Model	Jasc	Part Name	Part Number	Part Condition	SDR No.	RGN
152	3245	TUBE	923150	FAILED	20140305005	PAC
172N	2823	FUEL VALVE		DEVIATION	20140312008	ONT

Make/Model	Jasc	Part Name	Part Number	Part Condition	SDR No.	RGN
172N	3245	TUBE	93080	HOLE	20140325005	ONT
172R	2421	ALTERNATOR	991059111RX	LOW OUTPUT	20140221001	PNR
172R	7414	MAGNETO	4371	WORN	20140317010	PNR
172S	2710	AILERON CABLE	510105365	FRAYED	20140115004	ONT
172S	2710	AILERON CABLE	510105362364	FRAYED	20140320003	ONT
172S	3243	PISTON	98820125	SHEARED	20140129006	PNR
172S	3414	AIRSPPEED INDICATOR	EA517522PTLCES	STICKING	20140227006	ONT
180H	2701	U-JOINT	411257	CRACKED	20140124005	ONT
182	3211	MAIN GEAR U-BOLT	541153	SHEARED	20140211008	PAC
182N	2300	RADIO MOUNT		INCORRECTLY INSTALLED	20140321001	PNR
182N	5500	BULKHEAD	7126161	UNSERVICEABLE	20140321012	PNR
182N	6122	PROPELLER GOVERNOR	C290D2DT1	LEAKING	20140322001	PNR
182N	7160	AIRBOX		WORN	20140321002	PNR
182N	8530	CYLINDERS	712R	CORRODED	20140321007	PNR
208B	2710	BOLT	AN4H13A	INCORRECT	20140128016	PNR
208B	2710	BOLT	AN4H13A	WRONG BOLT	20140128015	PNR
208B	3243	ANCHOR BOLT	6901900	BROKEN	20140224027	PNR
208B	5600	SWITCH	SK208146	UNSERVICEABLE	20140113011	PNR
208B	5730	DOUBLER	S10722	CRACKED	20140124019	ONT
208B	7120	HORSE COLLAR	265102215	CRACKED	20140124004	ATL
401B	2822	FUEL PUMP	65080921	LEAKING	20140328005	PNR
550	5280	TORQUE TUBE		CRACKED	20140221014	PAC
550	5280	TORQUE TUBE	55421029	ORIGINAL	20140227007	PAC
560	2810	VENT FLOAT VALVE	99142684	UNSERVICEABLE	20140313008	PNR
560	5270	VALVE	259A1PP	FAILED	20140217028	PNR
750	3240	BRAKES		SEIZED	20140311006	QUE
750	5554	UPPER RUDDER HINGE BRACKE	673104112	CRACKED	20140227005	ONT
A185F	2750	SUPPORT ASSEMBLY	5223178	CRACKED	20140113012	PAC
P206B	2710	AILERON BRACKET ASSEMBLY	122005318	CRACKED	20140212006	PAC
P206B	3213	AXLE	14410031R	CORRODED	20140226001	PAC
T206H	2822	FUEL PUMP	62E23190	NEW	20140130014	PNR
T206H	7314	FUEL PUMP	62E23190	ROUGH	20140124003	PNR
U206G	2421	ALTERNATOR	DOFF10300BR	FAILED	20140307004	PNR

DASSAULT

Make/Model	Jasc	Part Name	Part Number	Part Condition	SDR No.	RGN
FALCON 10	3020	SLAT ANTI-ICE HOSE	FAL1007	COLLAPSED	20140122008	ONT

DEHAVILLAND - CAN

Make/Model	Jasc	Part Name	Part Number	Part Condition	SDR No.	RGN
DHC 2 MKI	5310	TUBULAR STRUCTURE		CRACKED	20140113013	PAC
DHC 2 MKI	5720	RIB	C2W7521	CRACKED	20140303021	PAC

Make/Model	Jasc	Part Name	Part Number	Part Condition	SDR No.	RGN
DHC 3	5510	STABJACK ATTACH LUG	C3F5795	LOOSE	20140123008	PAC
DHC 3	5710	AILE	C3W1	FISSURE	20140313010	QUE
DHC 3T	5711	SPAR PLATE	C3W363	CORRODED	20140214008	PNR
DHC 3T	5730	WING SKIN CORRUGATIONS	MULTIPLE	CRACKED	20140214006	PNR
DHC 8 100	3230	SOLENOID SEQUENCE VALVE	54C546349	CRACKED	20140124014	QUE
DHC 8 102	2697	CONNECTOR	2612P2	BROKEN	20140113006	ATL
DHC 8 102	3320	FIXED LAMP HOLDER	BV033020223	BURNT	20140307001	ATL
DHC 8 102	5610	WINDOW		SHATTERED	20140305002	ATL
DHC 8 102	5755	SPOILER ACTUATOR	A44700009	FRACTURED	20140106004	ATL
DHC 8 106	2701	BOLT	NAS130416D	USED	20140113009	PNR
DHC 8 106	2810	REFUEL/DEFUEL LINE	8282006001	LEAKING	20140130018	PNR
DHC 8 106	2913	HYDRAULIC PUMP	570347	LEAKING	20140328010	PNR
DHC 8 300	2721	RUDDER TRIM SWITCH	682175	BURNT	20140303006	ONT
DHC 8 301	1420	CONNECTOR	MS3474L2241P	BURNT	20140122004	ATL
DHC 8 311	2900	UNION FITTING	AN81510D	CRACKED	20140116003	ATL
DHC 8 314	7310	FITTING	AN52610D	CRACKED	20140114001	QUE
DHC 8 401	2722	RUDDER POWER CONTROL UNIT	3905001011	FAILED	20140208002	QUE
DHC 8 401	2760	SPOILER UNLOAD VALVE	3960001005	FAILED	20140218004	QUE
DHC 8 401	2913	ENGINE DRIVEN PUMP	6617303	SHEARED	20140214007	QUE
DHC 8 401	3230	SELECTOR VALVE	483003	FAILED	20140218009	QUE
DHC 8 401	3297	NOSE GEAR WEIGHT ON WHEELS HARNESS	472013	FAILED	20140218012	QUE
DHC 8 401	3297	SENSOR HARNESS	472023	INTERMITTENT	20140218007	QUE
DHC 8 401	5753	FLAP SHROUD SKIN	85730802113	FAILED	20140209001	QUE
DHC 8 401	6120	PROPELLER CONTROLS		FAILED	20140320004	QUE
DHC 8 401	7500	P2.2 VALVE	304768304	FAILED	20140209003	QUE
DHC 8 402	1000	BULKHEAD UNION	MS21924J8	NEW	20140103002	ATL
DHC 8 402	1420	CANON PLUG	D3899926JB98PN	SHORTED	20140205003	ATL
DHC 8 402	1420	GROUND MODULE	B0807003002	INTERMITTENT	20140108006	ONT
DHC 8 402	2300	AUDIO RADIO CONTROL DISPLAY UNIT	CDU3933AE05	INTERMITTENT	20140214004	ONT
DHC 8 402	2430	SHAFT		SHEARED	20140212005	PNR
DHC 8 402	2500	BOLT	MS2000412	LOOSE	20140228001	ATL
DHC 8 402	2500	PIVOT BOLT	MS2000412	LOOSE	20140131001	ATL
DHC 8 402	2897	LIGHT INDICATOR	MS250418	NEW	20140106013	PNR
DHC 8 402	3060	BRUSH BLOCK	697079003	SHORTED	20140129003	ATL
DHC 8 402	3060	HARNESS DE-ICER WIRE	697037220	NEW	20140310004	PNR
DHC 8 402	3213	MAIN WHEEL ASSEMBLY	4151171	NEW	20140217027	PNR
DHC 8 402	3220	NOSE WHEEL ASSEMBLY	415118	NEW	20140213008	PNR
DHC 8 402	3230	CABLE	485033	BROKEN	20140103016	QUE
DHC 8 402	3230	LANDING GEAR SELECTOR CONTROL UNIT	860TS09Y00	NEW	20140327004	PNR
DHC 8 402	3246	CONE BEARING (OUTER)	2967520629	NEW	20140314015	PNR
DHC 8 402	3246	CONE BEARING (INNER)	2968520629	NEW	20140321016	PNR
DHC 8 402	3397	WIRING HARNESS	82420201001	UNSERVICEABLE	20140110011	PAC
DHC 8 402	5210	SEAL INFLATABLE	5022121	NEW	20140103017	PNR
DHC 8 402	5230	AFT BAGGAGE DOOR HANDLE	85217925005	SERVICEABLE	20140206001	ONT
DHC 8 402	5751	BRACKET	85740337107	WORN	20140221013	ONT
DHC 8 402	7297	ENGINE HARNESS	82454109013	CHAFED	20140213002	ATL

DIAMOND - CAN

Make/Model	Jasc	Part Name	Part Number	Part Condition	SDR No.	RGN
DA 20 C1	1410	FUEL SUPPLY HOSE	AE7010001G0562	CONTAMINATED	20140304003	ONT
DA 20 C1	2750	FUSELAGE FLAP BELLCRANK	2227500300	CRACKED	20140211003	ONT
DA 20 C1	2750	FUSELAGE FLAP BELLCRANK	2227500300	CRACKED	20140213005	ONT
DA 20 C1	2810	FUEL DRAIN COCK	CAV110H4	LEAKING	20140324001	ATL
DA 20 C1	2822	ELECTRIC FUEL PUMP	53670001	LEAKING	20140122001	ATL
DA 20 C1	5210	CANOPY LATCH HOOK	2256400001	CRACKED	20140324002	ATL
DA 20 C1	5522	HINGE PLATE	2255106001	WORN	20140328003	ATL
DA 20 C1	7600	THROTTLE ROD END	HF3M	SEIZED	20140106002	ATL
DA 20 C1	7603	THROTTLE ROD END	HF3M	SEIZED	20140305004	ATL
DA 20 C1	7714	TACH DRIVE CABLE	SL0221010	BROKEN	20140224016	ATL
DA 20 C1	7800	EXHAUST RISER	DCOO15B	CRACKED	20140225007	ATL
DA 20 C1	7930	OIL PRESSURE GAGE	2279301000	INACCURATE	20140122003	ATL
DA 20 C1	7930	OIL PRESSURE GAGE	2279301000	INACCURATE	20140128001	ATL
DA 20 C1	7930	OIL PRESSURE GAGE	2279301000	INACCURATE	20140203014	ATL
DA 20 C1	7930	OIL PRESSURE GAGE	2279301000	INACCURATE	20140211009	ATL
DA 20 C1	7930	OIL PRESSURE GAGE	2279301000	INACCURATE	20140211012	ATL
DA 20 C1	7930	OIL PRESSURE GAGE	2279301000	INACCURATE	20140225002	ATL
DA 20 C1	7930	OIL PRESSURE GAGE	2279301000	INACCURATE	20140217003	ATL
DA 20 C1	7930	OIL PRESSURE GAGE	2279301000	INACCURATE	20140217010	ATL
DA 20 C1	7930	OIL PRESSURE INDICATOR	2279301000	INACCURATE	20140224014	ATL

DORNIER

Make/Model	Jasc	Part Name	Part Number	Part Condition	SDR No.	RGN
328 100	2460	CONTACTOR RELAY	C750B2F	FAILED	20140225021	PAC

EMBRAER

Make/Model	Jasc	Part Name	Part Number	Part Condition	SDR No.	RGN
ERJ 170 200 SU	3260	SENSOR	8001901	FAILED	20140128011	ONT
ERJ 170 200 SU	3260	WOW SENSOR	8001901	FAILED	20140225009	ONT
ERJ 170 200 SU	5540	RUDDER HINGE FITTING	17063072407	BROKEN	20140227002	ONT
ERJ 190 100 IGW	2435	GENERATOR	1701320	CRACKED	20140130001	QUE
ERJ 190 100 IGW	2565	SLIDE ASSEMBLY	1040051	FAILED	20140310001	QUE
ERJ 190 100 IGW	2710	AILERON CONTROL SYSTEM		STIFF	20140103014	QUE
ERJ 190 100 IGW	2750	FLAP TORQUE-TUBE		INCORRECTLY INSTALLED	20140205004	QUE
ERJ 190 100 IGW	2751	OUTBOARD SLAT SKEW SENSOR	1716280A	FAILED	20140103011	QUE
ERJ 190 100 IGW	2751	SLAT SKEW SENSOR	1716280A	CORRODED	20140103013	QUE
ERJ 190 100 IGW	2751	SLAT/FLAT POSITION SENSOR	5913840	FAILED	20140321014	QUE
ERJ 190 100 IGW	2780	SLAT SYSTEM		FAILED	20140129002	QUE

Make/Model	Jasc	Part Name	Part Number	Part Condition	SDR No.	RGN
ERJ 190 100 IGW	2780	SLAT/FLAP ACE CONTROL	1700064F	FAILED	20140122005	QUE
ERJ 190 100 IGW	2781	RIGHT-HAND OUTBOARD SLAT SKEW SEN	1716282A	FAILED	20140121001	QUE
ERJ 190 100 IGW	2820	REFUEL ASSEMBLY DIFFUSER	17009961403	CRACKED	20140117008	QUE
ERJ 190 100 IGW	3140	NETWORK INTERFACE CARD PROCESSOR MODULE	70265421901	FAILED	20140124018	QUE
ERJ 190 100 IGW	3242	MAIN LANDING GEAR BRAKE	900023402PR	SEIZED	20140304002	QUE
ERJ 190 100 IGW	3251	STEERING SYSTEM		FAILED	20140310003	QUE
ERJ 190 100 IGW	3297	HARNESS WIRE SENSOR 2	9037B000104	FAILED	20140124016	QUE
ERJ 190 100 IGW	3411	PITOT PROBE		FAILED	20140103015	QUE

EUROCOPTER DEUT

Make/Model	Jasc	Part Name	Part Number	Part Condition	SDR No.	RGN
EC 135P2PLUS	6330	TRANSMISSION ANTI RESONANCE ISOLATION SYSTEM MOUNT	L633M2010109	FLUID LOSS	20140128005	ONT
EC 135P2PLUS	6330	TRANSMISSION ANTI RESONANCE ISOLATION SYSTEM MOUNT	L633M2010109	FLUID LOSS	20140128006	ONT

EUROCOPTER CANADA

Make/Model	Jasc	Part Name	Part Number	Part Condition	SDR No.	RGN
BO105 LS A3	6210	MAIN ROTOR BLADE	10515150	DEBONDED	20140106009	ONT

EUROCOPTER FRANCE

Make/Model	Jasc	Part Name	Part Number	Part Condition	SDR No.	RGN
AS 355	5347	RESTRAINT ASSEMBLY	2000115121	RELATIVELY NEW	20140125002	PNR

FAIRCHILD

Make/Model	Jasc	Part Name	Part Number	Part Condition	SDR No.	RGN
SA227AC	2120	CABIN		SMOKE	20140321015	ONT
SA227AC	2611	SMOKE DETECTOR	7211111000	FAILED	20140226005	ONT
SA227AC	2612	FIRE DETECTOR	1734361450F	INTERMITTENT	20140226006	ONT
SA227AC	5610	WINDSHIELD	2719482002	INTERFERENCE	20140313012	PNR
SA227AC	5610	WINDSHIELD	2719482002	INTERFERENCE	20140313013	PNR
SA227DC	2697	LOGIC MODULE	3219027	INTERMITTENT	20140210005	ONT
SA227DC	3010	ANTI-ICE VALVE	319980131	FAILED	20140306012	ONT
SA227DC	3110	ANNUNCIATOR PANEL	27193471	BURNT SMELL	20140326017	ONT
SA227DC	520	ENGINE	TPE33111U	SNOW	20140320006	ONT
SA227DC	7931	OIL GAUGE		FAILED	20140210004	ONT

HUGHES

Make/Model	Jasc	Part Name	Part Number	Part Condition	SDR No.	RGN
369D	0	`O` RING		MISSING	20140217004	PNR
369D	3211	LANDING GEAR DAMPER	369D26301	COLLAPSED	20140108002	PAC
369D	7323	GOVERNOR	23065121	ARM SEIZED	20140108003	PAC

LEARJET

Make/Model	Jasc	Part Name	Part Number	Part Condition	SDR No.	RGN
45	2997	FUSE	290001	OPEN	20140207001	ONT
45	3010	TUBE ASSEMBLY	66301000070	CRACKED	20140226002	QUE
45	3240	BRAKE CONTROL UNIT	429333	SERVICEABLE	20140107010	ONT
60	3244	TIRE	178K235	SCRAP	20140110007	ONT

MITSUBISHI - USA

Make/Model	Jasc	Part Name	Part Number	Part Condition	SDR No.	RGN
MU 2B60	5343	FITTING	030A311201	CRACKED	20140318011	ONT
MU 2B60	5620	OUTER CABIN WINDOW	010A31870	BROKEN	20140131006	PNR

MORAVAN

Make/Model	Jasc	Part Name	Part Number	Part Condition	SDR No.	RGN
Z242L	3250	STEERING CABLE	E24242370000	FRAYED	20140206005	ONT

PILATUS - SW

Make/Model	Jasc	Part Name	Part Number	Part Condition	SDR No.	RGN
PC 12 45	2750	FLAP FLEX DRIVE	9450202206	SHEARED	20140131004	ONT
PC 12 47E	2140	TEMPERATURE CONTROL VALVE	6031C000001	FAILED	20140113004	ONT

PIPER

Make/Model	Jasc	Part Name	Part Number	Part Condition	SDR No.	RGN
PA28RT 201	2731	STABILATOR TRIM CABLE	62701191	FRAYED	20140124002	ONT
PA31 350	2820	FLARED FITTING	6768D	CRACKED	20140123007	PAC
PA34 200T	2421	COUPLING	6635796R	DEBONDED	20140225023	PNR
PA44 180	3260	DOWN LOCK SWITCH	8640902	BROKEN	20140218001	ATL

ROBINSON

Make/Model	Jasc	Part Name	Part Number	Part Condition	SDR No.	RGN
R44 II	6730	HYDRAULIC SERVO	D2121	LEAKING	20140224020	PNR
R44 II	7414	MAGNETO	1060064620	LEAKING	20140212002	PNR
R44 II	7714	TACHOMETER	C7924	UNSERVICEABLE	20140221023	PNR

SAAB

Make/Model	Jasc	Part Name	Part Number	Part Condition	SDR No.	RGN
340B	5320	BRACKET PULLEY	7276100594	CORRODED	20140317008	QUE

SIKORSKY

Make/Model	Jasc	Part Name	Part Number	Part Condition	SDR No.	RGN
S61N	1410	HOSE ASSEMBLY	SS40C6D334000	FAILED	20140218005	PAC
S61N	6320	COVER AND SLEEVE	S6135296191	WORN	20140221024	PAC
S76	6320	MAIN GEAR BOX LOWER HOUSING	7635109008059	CRACKED	20140130017	PAC

SWEARINGEN

Make/Model	Jasc	Part Name	Part Number	Part Condition	SDR No.	RGN
SA226TC	2460	BUS TIE SWITCH	AN32302	UNSERVICEABLE	20140303020	PNR
SA226TC	2731	BOLT	NAS6604D34	FAILED	20140212007	PNR

ENGINE**ALLISON**

Make/Model	Jasc	Part Name	Part Number	Part Condition	SDR No.	RGN
250-C47B	7230	SCROLL ASSEMBLY	23064577	CRACKED	20140108015	PAC

AVCO LYCOMING

Make/Model	Jasc	Part Name	Part Number	Part Condition	SDR No.	RGN
IO-360-A3B6D	8520	LIFTER BODY	15B26064	FAILED	20140328006	PNR
IO-360-A3B6D	8540	PLUNGER	SL61544	FAILED	20140328007	PNR
IO-360-M1A	7414	DISTRIBUTOR GEAR	510406	BROKEN	20140125001	PNR
IO-540-AE1A5	7414	BLOCK	10357426	CRACKED	20140130005	PNR
LTIO-540-J2BD	8520	CRANKCASE	11F20022D3	CRACKED	20140228006	PAC
LTIO-540-J2BD	8530	CYLINDER STUD	SL5015	SHEARED	20140122009	PAC
O-320-B2C	7414	BLOCK	10357424	CRACKED	20140130006	PNR
O-320-B2C	7414	BLOCK	10357424	CRACKED	20140130007	PNR
O-360-E1A6D	8550	LIFTER	15B28040	NEW	20140128014	QUE
O-540-E4C5	8530	SPRING	1180011795	BROKEN	20140204009	QUE
TIO-540-A2B	8530	STUD	5015	BROKEN	20140124027	PAC

CFM INTERNATIONAL

Make/Model	Jasc	Part Name	Part Number	Part Condition	SDR No.	RGN
CFM56-7B22	7250	HIGH PRESSURE TURBINE BLADE	1957M10P03	CRACKED	20140108007	PNR
CFM56-7B22	7250	HIGH PRESSURE TURBINE BLADE	1957M10P03	CRACKED	20140120013	PNR
CFM56-7B22	7250	HIGH PRESSURE TURBINE BLADE	1957M10P03	CRACKED	20140224028	PNR
CFM56-7B22	7250	HIGH PRESSURE TURBINE ROTOR BLADE	1957M10P03	CRACKED	20140108008	PNR
CFM56-7B22	7250	HIGH PRESSURE TURBINE ROTOR BLADE	1957M10P03	CRACKED	20140108010	PNR
CFM56-7B22	7250	HIGH PRESSURE TURBINE ROTOR BLADE	1957M10P03	CRACKED	20140108011	PNR
CFM56-7B22	7250	HIGH PRESSURE TURBINE ROTOR BLADE	1957M10P03	CRACKED	20140108012	PNR
CFM56-7B22	7250	HIGH PRESSURE TURBINE ROTOR BLADE	1957M10P03	CRACKED	20140120011	PNR
CFM56-7B22	7250	HIGH PRESSURE TURBINE ROTOR BLADE	1957M10P03	CRACKED	20140108009	PNR

GARRETT

Make/Model	Jasc	Part Name	Part Number	Part Condition	SDR No.	RGN
TFE731-2-2B	7314	FUEL PUMP	307085027	FAILED	20140114002	ONT
TFE731-3C-100S	7321	FUEL CONTROL UNIT	307080022	FAILED	20140217005	ONT
TPE331-11	7200	COMPRESSOR BEARING	8688779	CRACKED	20140117009	ONT
TPE331-11	7720	T2 TEMPERATURE SENSOR	6940019002	INACCURATE	20140205001	ONT

GENERAL ELECTRIC

Make/Model	Jasc	Part Name	Part Number	Part Condition	SDR No.	RGN
CF34-10E5A1	7120	AFT ENGINE MOUNT	1846M40G02	CHAFING	20140203015	QUE
CF34-3B1	5350	LEFT-HAND UPPER STANG FAIRING	22850253101	MISSING A PIECE	20140312007	ATL
CF34-3B1	7170	C-SUMP SCAVENGE AND DRAIN	5054T31G03	NEW	20140314011	PAC
CF34-8C1	7830	CASCADE	CN6241291003	BROKEN	20140317001	QUE

HONEYWELL

Make/Model	Jasc	Part Name	Part Number	Part Condition	SDR No.	RGN
AS907-1-1A	7297	W6 HARNESS	30784514	DAMAGED	20140225001	QUE

PRATT & WHITNEY-CAN

Make/Model	Jasc	Part Name	Part Number	Part Condition	SDR No.	RGN
JT15D	7310	FERRULES (TEE TUBE)	MS938204	DEFECTIVE	20140318001	QUE
PT6A-21	1200	OIL FILLER TUBE	3004097	WORN	20140131002	ONT
PT6A-27	7200	BOLT MACHINE HEX	MS951813	BROKEN BOLTS	20140112002	QUE
PT6A-28	7250	COMPRESSOR TURBINE VANE STATOR RING	3032651	CRACKED	20140305001	ONT
PT6A-34	7800	LARGE EXIT DUCT	310926302	CRACKED	20140116005	PAC
PT6A-34	7800	LARGE EXIT DUCT	310926302	CRACKED	20140224026	PAC
PT6A-41	7321	ENGINE DRIVEN FUEL PUMP	2532330003	UNSERVICEABLE	20140215002	PNR
PT6A-60A	7321	SPEEDS SETTING SHAFT		FAILED	20140217006	PNR
PW118	7250	LOW PRESSURE TURBINE BLADE	3049152	CRACKED	20140107001	PNR
PW121	7250	LOW PRESSURE BLADE	304915201	CRACKED	20140123006	ATL
PW124B	7712	TORQUE SENSOR	310823801	UNSERVICEABLE	20140123001	PNR
PW127	6123	AUTOFEATHER CONTROL	307816601	CRACKED	20140217002	QUE
PW306C	7310	FUEL WASTE EJECTOR	870011	VENTING FUEL	20140122007	PAC
PW535B	7240	COMBUSTION CAN LINER	307552001	RETAINING NUTS	20140311003	QUE
PW535E	1400	PACKING PREFORMED	ST6166015	SURFACE DEFECTS	20140217001	QUE

PRATT & WHITNEY-USA

Make/Model	Jasc	Part Name	Part Number	Part Condition	SDR No.	RGN
R-1340-AN-1	8530	ROCKER ARM BEARING	55601AM	UNSERVICEABLE	20140107008	PNR

ROLLS ROYCE - GY

Make/Model	Jasc	Part Name	Part Number	Part Condition	SDR No.	RGN
BR700-715C1-30	7321	REFERENCE TUBE		ABNORMAL WEAR	20140303018	QUE

SMA

Make/Model	Jasc	Part Name	Part Number	Part Condition	SDR No.	RGN
SR 305-230-1	8520	ENGINE CASE		CRACKED	20140326019	PNR

TELEDYNE CONTINENTAL

Make/Model	Jasc	Part Name	Part Number	Part Condition	SDR No.	RGN
O-200-A	7800	MUFFLER WELD ASSEMBLY	4504003	CRACKED	20140127003	PAC

TURBOMECA

Make/Model	Jasc	Part Name	Part Number	Part Condition	SDR No.	RGN
ARRIUS 2F	7722	T4 5 SUPPORT BRACKET ASSEMBLY	319767990	BROKEN	20140219001	PAC

PROPELLER

DOWTY ROTOL

Make/Model	Jasc	Part Name	Part Number	Part Condition	SDR No.	RGN
R408/6-123-F/17	6111	PROPELLER BLADE	697070003	CRACKED	20140213006	ONT
R408/6-123-F/17	6120	PROPELLER CONTROL UNIT	697073002	FAILED	20140208001	QUE
R408/6-123-F/17	6120	PROPELLER CONTROL UNIT	697073002	FAILED	20140209002	QUE
R408/6-123-F/17	6120	PROPELLOR ELECTRONIC CONTROL UNIT	699018003	FAILED	20140218006	QUE

HARTZELL

Make/Model	Jasc	Part Name	Part Number	Part Condition	SDR No.	RGN
HC-B4TN-5NL	6114	LINK PIN UNIT	A1464	BROKEN	20140317002	QUE
HC-E3YR-2ATF	6111	PROPELLER BLADES	FC84686R	UNSERVICEABLE	20140224025	PNR
HC-E4A-3I	6111	PROPELLOR ASSEMBLY	HCE4A3I	SERVICEABLE	20140129004	PAC

EQUIPMENT

APICAL INDUSTRIES

Make/Model	Jasc	Part Name	Part Number	Part Condition	SDR No.	RGN
20416104	3212	CABLE	204401	UNSERVICEABLE	20140217026	PAC

BAE - UK

Make/Model	Jasc	Part Name	Part Number	Part Condition	SDR No.	RGN
TR99210	3320	POWER UNIT	TR99210	BURNT	20140317005	PNR

BAE SYSTEMS

Make/Model	Jasc	Part Name	Part Number	Part Condition	SDR No.	RGN
65C1623778	2000	CARD ASSEMBLY	696017719	INSPECTED	20140130010	PAC

CESSNA

Make/Model	Jasc	Part Name	Part Number	Part Condition	SDR No.	RGN
532001202	5511	SPAR	53200198	CRACKED	20140107007	ONT
11341461	2100	COMPRESSOR MOTOR BRUSHES	12511716	WORN	20140214003	PNR

CHAMPION

Make/Model	Jasc	Part Name	Part Number	Part Condition	SDR No.	RGN
K3822	7414	DISTRIBUTOR BLOCK	K3822	LOOSE	20140124001	ONT
K3822	7414	DISTRIBUTOR BLOCK	K3822	OUT OF LIMITS	20140107003	ONT

CLEVELAND

Make/Model	Jasc	Part Name	Part Number	Part Condition	SDR No.	RGN
40203	3244	TIRE	265K081	LEAKING	20140129008	ONT

EASTERN AERO

Make/Model	Jasc	Part Name	Part Number	Part Condition	SDR No.	RGN
R1400115RB8	2560	INFLATION SYSTEM	R1265101	MISSING PARTS	20140213001	ATL

GOODRICH

Make/Model	Jasc	Part Name	Part Number	Part Condition	SDR No.	RGN
23085024	2435	REAR BEARING		FAILED	20140304007	ONT
23088008	2434	STARTER/GENERATOR	23088008	SERVICEABLE	20140211007	PAC

GOODYEAR

Make/Model	Jasc	Part Name	Part Number	Part Condition	SDR No.	RGN
195X6758	3245	INNER TUBE	G195X6758	DEFECTIVE	20140205005	PNR

GRIMES MFG CO

Make/Model	Jasc	Part Name	Part Number	Part Condition	SDR No.	RGN
6104789	3350	EMERGENCY LIGHT BATTERY	6104789	UNSERVICEABLE	20140110005	PAC

KANNAD

Make/Model	Jasc	Part Name	Part Number	Part Condition	SDR No.	RGN
S184050101	2562	EMERGENCY LOCATOR TRANSMITTER	S184050101	GOOD	20140113002	ATL

MESSIER-DOWTY

Make/Model	Jasc	Part Name	Part Number	Part Condition	SDR No.	RGN
11300105	3230	UPLOCK ACTUATOR ASSEMBLY	11300105	UNSERVICEABLE	20140113001	ONT

PIAGGIO

Make/Model	Jasc	Part Name	Part Number	Part Condition	SDR No.	RGN
EQUIPMENT	5210	3WAY VALVE	MJV3	FROZEN	20140130008	ONT

SIKORSKY

Make/Model	Jasc	Part Name	Part Number	Part Condition	SDR No.	RGN
7610408007	2000	SHIM	7610408007101	NEW	20140311009	PAC
S61122370104	1400	EYEBOLT	S611223701042	CRACKED	20140221020	PAC

TURBOMECA

Make/Model	Jasc	Part Name	Part Number	Part Condition	SDR No.	RGN
ARRIEL1D1	2435	STARTER/GENERATOR	150SG122Q	UNSERVICEABLE	20140106006	PAC

UNAPPROVED PART**BAE SYSTEMS**

Make/Model	Jasc	Part Name	Part Number	Part Condition	SDR No.	RGN
65C1623778	2000	CARD ASSEMBLY	696017719	INSPECTED	20140130010	PAC

EASTERN AERO

Make/Model	Jasc	Part Name	Part Number	Part Condition	SDR No.	RGN
R1400115RB8	2000	INFLATION SYSTEM	R1265101	MISSING PARTS	20140213001	ATL

SIKORSKY

Make/Model	Jasc	Part Name	Part Number	Part Condition	SDR No.	RGN
7610408007	2000	SHIM	7610408007101	NEW	20140311009	PAC



ORDERING TC PUBLICATION AND FORMS

HEADQUARTERS

Transport Canada (AARDG)
Place de Ville, Tower C
Ottawa, ON K1A 0N8
Tel: 1-800-305-2059

REGIONAL OFFICES

Atlantic

Transport Canada
95 Foundry St., 6th Floor
Moncton, NB E1C 5H7
Tel: 1-800-305-2059

Prairie and Northern

Transport Canada
344 Edmonton Street
Winnipeg, MB R3C 0P6
Tel: 1-800-305-2059

Ontario

Transport Canada
4900 Yonge St., Suite 400
Toronto, ON M2N 6A5
Tel: 1-800-305-2059

Quebec

Transport Canada
700 Leigh Capreol
Dorval, QC H4Y 1G7
Tel: 1-800-305-2059

Pacific

Transport Canada
800 Burrard St., Suite 620
Vancouver, BC V6Z 2J8
Tel: 1-800-305-2059

North America:

1-800-305-2059

National Capital Region:

613 991-4071

Fax:

613 991-2081

E-mail:

MPS@tc.gc.ca

CIVIL AVIATION INTERNET SITES

Civil Aviation Homepage

www.tc.gc.ca/eng/civilaviation/menu.htm

Continuing Airworthiness

www.tc.gc.ca/eng/civilaviation/certification/continuing-menu-1432.htm

Canadian Aviation Regulations (CARs)

www.tc.gc.ca/eng/civilaviation/regserv/cars/menu.htm

Airworthiness Directive

www.tc.gc.ca/cawis-swimn

Civil Aviation Safety Alerts (CASA)

www.tc.gc.ca/civil-aviation-safety-alert

Web Service Difficulty Reporting System (WSDRS)

www.tc.gc.ca/wsdrrs