



Transport
Canada

Transports
Canada



TP 6980E
(03/2016)

Feedback

Issue 3/2016

Canadian Aviation Service Difficulty Reports

The cover image is of the newly certified Bombardier "C-Series" CS300 Aeroplane. This clean sheet design includes many innovative features that make it the most fuel efficient aircraft in its class. This aircraft incorporates the newly developed Pratt & Whitney 'geared turbofan engines'. The CS300 engines not only reduce fuel consumption but also reduce emission and noise levels compared to similar engines in its thrust range. These and other innovations improve the environmental impact and passenger comfort ushering in a new standard in air transportation.



Table of Contents

Heads Up.....	3
Fixed Wing.....	7
Engines.....	12
Rotorcraft.....	14
Hangar Noise.....	16
Suspected Unapproved Parts (SUP).....	17
FAA Unapproved Parts Notifications (UPN).....	18
FAA Special Airworthiness Information Bulletins (SAIB).....	19
EASA Safety Information Bulletin (SIB).....	20
Equipment ad.....	21
Service Difficulty Reports (SDR).....	22
Ordering TC Publication and Forms.....	54
Civil Aviation Internet Sites.....	54



The cover image is of the newly certified Bombardier "C-Series" CS300 Aeroplane. This clean sheet design includes many innovative features that make it the most fuel efficient aircraft in its class. This aircraft incorporates the newly developed Pratt & Whitney 'geared turbofan engines'. The CS300 engines not only reduce fuel consumption but also reduce emission and noise levels compared to similar engines in its thrust range. These and other innovations improve the environmental impact and passenger comfort ushering in a new standard in air transportation.

Feedback is published quarterly by the Continuing Airworthiness Division of Transport Canada, informing the aviation community of reported day-to-day problems that affect aircraft airworthiness in Canada.

Reprints of original *Feedback* material are encouraged, but credit must be given to Transport Canada's *Feedback* magazine. Please forward one copy of the reprinted article to the Editor.

To obtain information concerning copyright ownership and restrictions on reproduction of the material, please address your correspondence to:

J r mie Laviolette, Editor
Feedback
Transport Canada (AARDG)
Place de Ville, Tower C
Ottawa ON K1A 0N5

E-mail: jeremie.laviolette@tc.gc.ca
Tel.: 888-663-3639
Fax: 613-996-9178

To view *Feedback* online or to receive it electronically please visit:
www.tc.gc.ca/feedback-magazine

The articles contained in *Feedback* are derived from *Service Difficulty Reports* (SDRs) submitted by Aircraft Maintenance Engineers (AMEs), owners, operators and other sources in accordance with *Canadian Aviation Regulation* (CAR) 521.

SDRs are normally published verbatim. Transport Canada assumes no responsibility for the accuracy or content of any of these reports. Only spelling errors are corrected and content may be reduced as well as personal references deleted.

All defects or occurrences should be reported to Transport Canada through the Service Difficulty Reporting Program. For additional information about this program or concerning an article in *Feedback* magazine, contact your nearest Transport Canada Centre.

For all technical inquires related to articles of this magazine, please address your correspondence to CAWWebFeedback@tc.gc.ca

Feedback est aussi disponible en fran ais.

  Her Majesty the Queen in Right of Canada, as represented by the Minister of Transport (2016).

ISSN 1925-8429 (Online)

TP 6980E
(02/2016)

TC-1005710

It's that time again; time to complete your Annual Airworthiness Information Report (AAIR)!

As of January 1st each year, you can sign into Transport Canada's CAWIS website to complete your report. The due date for all aircraft is March 30th annually.

To sign into the website you will need your personal access code. If you don't know your access code, please contact the AAIR group by calling 1-888-663-3639 or by e-mail at TC.AAIR-RAINA.TC@tc.gc.ca.

Once your AAIR has been submitted, you will receive a confirmation page, where you will have the option to print a copy for your records.



Did you know?

- The due date for your AAIR is not related to your annual inspection date. The AAIR requires the date of the most RECENT annual or 100-hour inspection which could have occurred in the previous calendar year.
- AMO stands for Approved Maintenance Organization. AME stands for Aircraft Maintenance Engineer.



Change of address

For all changes to your mailing address, please contact your TC Regional Aircraft Registration Office at 1-800-305-2059. Indicating your new mailing address as part of your AAIR submission will not update your file.

If you require assistance to complete your AAIR online, if you misplaced your access code or if you have any questions/concerns, please contact our office at 1-888-663-3639 or by e-mail at TC.AAIR-RAINA.TC@tc.gc.ca.

Honeywell TPE331 - Fuel Nozzle and Borescope Inspection Information

SDR submitted:

Honeywell (formerly Garrett) Service Bulletin (SB) TPE331-73-0284 and FAA special airworthiness information bulletin (SAIB) number NE-16-19.

Transport Canada Comments:

Honeywell SB TPE331-73-0284 and FAA SAIB NE-16-19 address issues related to fuel nozzles in Honeywell TPE331 series engines. An increase in inspection interval and a borescope inspection of the first stage turbine stator and blades are recommended.

Transport Canada Civil Aviation would like to raise awareness of the issuance of these documents. Operators of Honeywell TPE331 engines should familiarize themselves with their contents and incorporate the instruction(s) into their maintenance schedules.

The FAA SAIB can be found through the following link:

http://rgl.faa.gov/Regulatory_and_Guidance_Library/rgSAIB.nsf/MainFrame?OpenFrameSet

The Honeywell Service Bulletin can be found through the following link (login required):

<https://myaerospace.honeywell.com>

Premature Failure of Cushion Clamps

SDR submitted:

Premature failure of cushion clamps has occurred where the clamp material deteriorates. The deterioration has resulted in chafing and damage to the hydraulic lines, causing leaks which ultimately lead to failure of the hydraulic system. The cushion clamp material is either dark blue or purple. The clamps with the dark blue cushions have been noted to exhibit premature deterioration allowing a chafing condition between the metal band of the clamp and the hydraulic tube. Many of these clamps are used throughout an aircraft and the (2) clamps identified, one purple and one dark blue, have the same part number (P/N) M85052/2-XX. Operators and maintenance facilities should also be aware that there have been failures where the cushion's wrapping edge appeared to be in good condition but a more detailed examination revealed that the cushion had worn away on the inside. This condition created a metal-to-metal chafing between the metal band of the clamp and the hydraulic line. Based on comparative testing by an independent lab of the two cushion materials, the blue material exhibited different chemical, material and mechanical properties than the purple material. The failure of the blue cushion clamps is suspected to be due to heat-induced degradation, chemical (Skydrol) influenced degradation, and potential vibration-induced friction/heating due to the blue material's high stiffness. Prolonged exposure to such conditions may result in the blue cushion material overheating and softening, which could lead to the complete degradation of the cushion material, resulting in metal-to-metal fretting/chafing.



Figure 1 - Different Color Cushion Clamps.



Figure 3 - Typical Deteriorated Cushion Clamps.



Figure 2 - Deteriorated Cushions example.

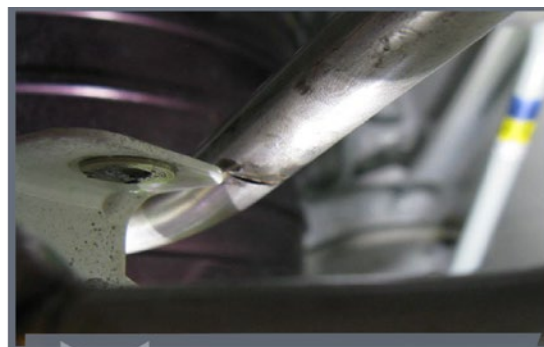


Figure 4 - Failure of Hydraulic Line found.

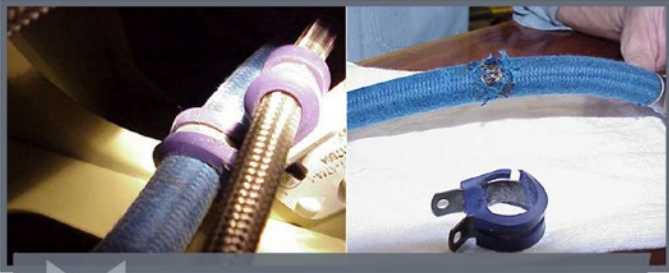


Figure 5 – Hidden Cushion Clamp Failure.

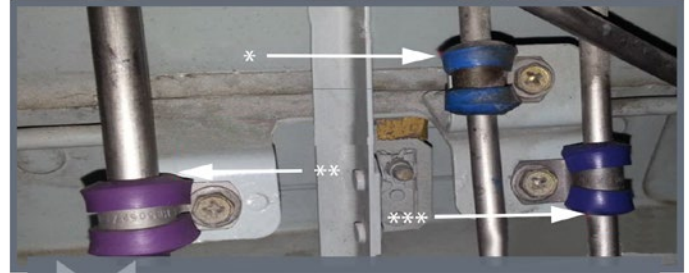


Figure 6 – Different Color Cushion Clamps.

- * Blue cushioned clamp. The rubber consistency is close to that of play dough. It will deform if pressed and remain deformed.
- ** Purple cushioned clamp.
- *** Blue cushioned clamp. The rubber is becoming softer.

Transport Canada Comments:

A number of clamp chafing events have occurred and at least one case resulted in a complete loss of hydraulic system fluid. The failure statistics indicate that the clamp failures are more prone to occur on the hydraulic systems, in the presence of high-levels of vibration and in high heat installations. This issue was discovered by one manufacturer; however these clamps are utilized industry wide as they are standard hardware. Maintainers should be aware that these clamps may be found on various aircraft models where this same part numbered clamp is used.

Transport Canada Civil Aviation (TCCA) recommends that all P/N M85052/2 clamps be inspected for material colour and condition at the next available maintenance opportunity. The blue material clamps should be replaced and all blue material clamps in parts inventories should be purged from stock. When replacing the clamps, the line or wire bundle should also be closely inspected. Prudence should be exercised after the initial aircraft inspections when replacing P/N M85052/2 clamps to ensure not to use the deficient clamps. Persons replacing standard parts are reminded that although a CAR 561 certification is not required for a standard part, these parts must still meet the intended specifications to be eligible for installation. TCCA does not certify manufacturers of Standard Parts, nor do most Civil Aviation Authorities around the world. It cannot be assumed that a part identified as a standard part meets the standards simply because it bears a part number. It is the responsibility of the installer to ensure that any part installed on an aircraft is in fact eligible to be installed. Refer to *TCCA Advisory Circular 571-024* for guidance on the documentation required for the installation of Standard Parts on Canadian registered aircraft.

Main Landing Gear Door Departure In-flight

SDR submitted:

During the walk around after landing, the crew noticed the left hand (L/H) main landing gear (MLG) door was missing. There was no noticeable damage to the airframe or the flaps. Dispatch speculated that the door departed closer to landing as the fuel burn numbers were normal for this flight.

The L/H MLG door was later found near the landing runway and returned to the operator. The upper surface skin had puncture damage and the leading edge had impact damage. It is unknown if that damage occurred before or after the part departed the aeroplane. Discoloration was also noted on the fractured surface of the fork rod end from the actuator arm that has evidence of an old crack. (Illustrated Parts Catalogue (IPC) item 90).

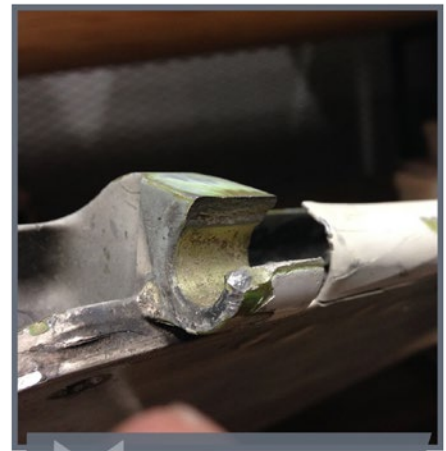
The cause of the door detaching from the aeroplane is unknown at this time and the investigation is ongoing.



Broken rod end of the main landing gear door.



Door damage after departing aeroplane.



Broken forward attachment main landing gear door.

Transport Canada Comments:

Upon visual inspection, the door arm appeared to have had a pre-existing crack as evidenced by the discoloration in the cracked area. Regular detailed inspections are intended to find any defects however this type of crack may be difficult to find without the use of a Non-Destructive Testing (NDT) inspection method. If the inspection requirement called for a visual or detailed visual inspection on areas such as rod ends, good practice is to inspect carefully when performing these required inspections. If while performing the inspection task you are unable to determine the condition of the part or some doubt exists, it is a good idea to request a NDT inspection to confirm any suspicious looking areas.

Parts falling off aircraft can cause damage to property and injury to people on the ground not to mention damage to the aircraft when they depart. If this crack can be found during maintenance, it is less costly to rectify and safer than having the part fall off the aircraft.

Audio Control Failed Due to Chafing Wires

SDR submitted:

A Remote Control Audio Unit (RCAU) failed. The pilot audio d4 avionics right main and pilot audio h2 left essential circuit breakers popped and did not reset.

The pilot was unable to change communication radio selections for transmitting. The audio control portion of the panel failed.

Maintenance found wires chaffing on the base of relay 3400k1. Splice 2350-cr2 was replaced and damaged wires at base of relay 3400-k1 repaired in accordance with Aircraft Maintenance Manual. System tested serviceable.



Wires touching the relay box.

Transport Canada Comments:

When inspecting aircraft, pay close attention to wires in tight locations. If they are touching parts of the aircraft or components, ensure they are protected properly to prevent damage caused by chafing.

Foreign Object Debris in the Fuel Transfer Valve

SDR submitted:

It was reported that the fuel transfer from tank two to tank one was not working. After troubleshooting the system, it was found that the right hand shut-off control level valve, had a foreign object lodged in the valve, holding it in the open position.



Visible foreign object damage (FOD) in the fuel transfer valve.

Transport Canada Comments:

Although it is unusual to find a foreign object in a fuel transfer valve, Transport Canada Civil Aviation reminds maintainers not to assume the improbability of it occurring while troubleshooting a defect on an aircraft. It is also important to keep debris out of the fuel tank when working on the fuel system to prevent creating potentially hazardous conditions.

Fuel Tank Leak and Evidence of Fire

SDR submitted:

During routine maintenance, a fuel leak was noticed from the forward fuel bay area. Upon further investigation, it was determined that at some point a fire had occurred in the forward fuel bay.

No fire had been reported and the operator was unaware of any incident. The forward fuel tank was removed and the entire area inspected with no other damage noted.

The area was cleaned and a previously removed serviceable fuel tank part number (p/n) C2PT1A was installed, tested and leaked-checked in accordance with the DHC-2 maintenance manual.



The fuel tank from a DeHavilland DHC-2 MK1 with burn marks on the exterior.

Transport Canada Comments:

This incident underscores the potential serious consequences of fuel leaks. Transport Canada Civil Aviation reminds operators and maintainers that even minor fuel leaks should not be ignored. If a fuel leak is discovered on a walk around or preflight, report it immediately to maintenance so the aircraft can be inspected to determine the source of the fuel leak and appropriate corrective action taken.

Aileron Trim Tab Potentiometer Install Problem

SDR submitted:

During an aileron trim actuator replacement, there was difficulty in getting the correct indication while rigging the potentiometer for aileron trim indication per the Aircraft Maintenance Manual (AMM) 27-10-04. It was determined that if the potentiometer part number (P/N) RV4SAYSD102A has the potentiometer arm installed with the link arm to the actuator arm as illustrated in the AMM, it will give a reverse indication on the cockpit gauge. The left trim gave a right wing down indication and the right trim gave a left wing down indication. Neutral was obtainable and the actuator was providing correct sense of the tab for left or right roll.

After attempting to set the potentiometer and re-checking all wiring, a new potentiometer was installed with the same part number as listed above. The new potentiometer gave the same result of reverse indication so from that it was concluded the problem was how the arm and link were mounted to the potentiometer and the actuator.

When the arm was removed, rotated 180 degrees and re-attached on the potentiometer, the indication direction became correct. Attached is a photo of the installation showing that the arm does not interfere with the trim push-pull tube. However, upon further inspection we can see that at full left wing trim, the potentiometer had previously contacted the wing structure. It was determined that this was how the system was rigged in the past however a pre-removal photograph was not taken. The arm was re-adjusted so that there was no contact.

The operator was uncertain if it was the part number of the potentiometer, the installation procedure/illustration in the AMM, or a combination of the two that caused this defect.



Figure 1 - incorrect linkage installation.

Transport Canada Comments:

A Learjet Technical Specialist reviewed this Service Difficulty Report and determined that the AMM is correct and the arm as shown in the photograph (see figure 1) is installed upside down. Learjet suggested that the potentiometer was incorrectly wired and that reversing the wires on the potentiometer and reinstalling the arm in accordance with the AMM should result in proper operation and indication. From the description of this maintenance activity, it is believed that the potentiometer was possibly wired incorrectly at some point in the past and the arm was installed upside down to compensate. During this maintenance event, the arm was installed according to the AMM and a reversed indication resulted.

Transport Canada Civil Aviation recommends contacting the manufacturer whenever maintenance instructions do not appear correct and to consult all available data. In this event, the solution to the problem has not yet been determined beyond a doubt so the investigation is still on-going.

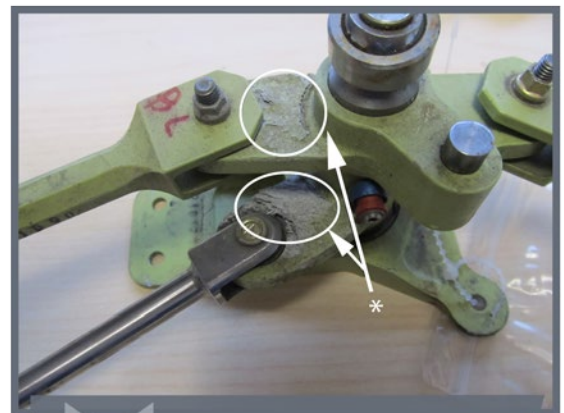
PILATUS - SW, PC-12/45

SDR # 20150515007

Main Cabin Door Bellcrank Corrosion

SDR submitted:

The door operating mechanism was disassembled to permit repairs during the maintenance activity to carry out Service Bulletin (SB) 52-007. The SB requires the passenger door shoot bolt fittings to be inspected for corrosion, and the subsequent requirement to replace the corroded shoot bolt fittings. Upon disassembly, it was noted that the upper crank assembly was heavily corroded at the rod attachment arm on crank, part number (P/N) 552.10.12.114. The crank was removed and replaced with a new part. Due to the position of the crank assembly when installed in the door, the corrosion was not readily visible in place without the use of an inspection mirror and light.



* Corrosion

Passenger door upper crank assembly.

Transport Canada Comments:

While performing the SB inspection task, the shoot bolt fittings required replacement. This necessitated additional disassembly and the corroded upper bell crank was found. The corroded bell crank might not have been found if the additional disassembly had not occurred. As noted above by the maintainer, the use of an inspection mirror and light would have been required to find this additional corroded part had the disassembly not taken place.

The requirement to use a mirror and light is not called up in the SB instructions. However, it is good standard practice to utilize both a mirror and light when performing inspections particularly in this case as the inspected area was inside a door. It is good maintenance practice to perform inspections using a mirror and light in cases when everything is not all exposed to accomplish the best inspection.

Through this event, the design approval holder was also informed of a possibly more extensive corrosion situation in an area that they had already published a Service Bulletin.

SAAB, SF340

SDR # 20160219001

Incorrectly Labeled Aeroplane Part

SDR submitted:

An auto pilot clutch assembly was received with an FAA form 8130-3 (status repaired) attached to it.

The part number on the document was effective for the aeroplane model and manufacturer's serial number, but the actual physical assembly was incorrect according to the technician and the component maintenance manual.

The capstan installed on the clutch had a wrong part number.



Incorrectly labeled capstan prior to installation. New capstan does not have enough room for the cable to be installed.

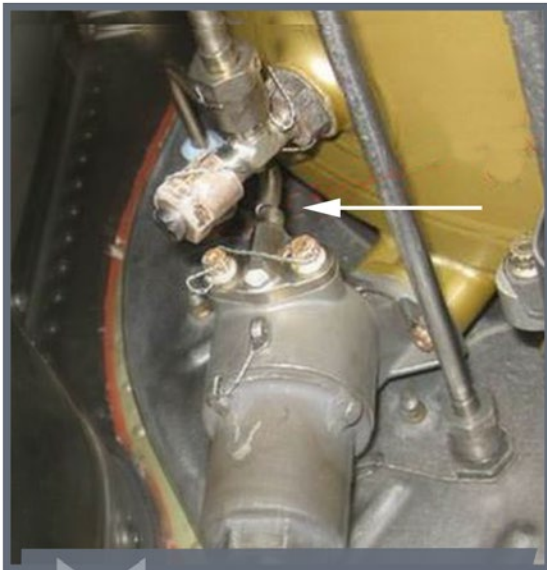
Transport Canada Comments:

It is a good practice that maintainers installing parts ensure that they are using correct parts by visually comparing the parts. A correct part number does not always guarantee that you have the right part.

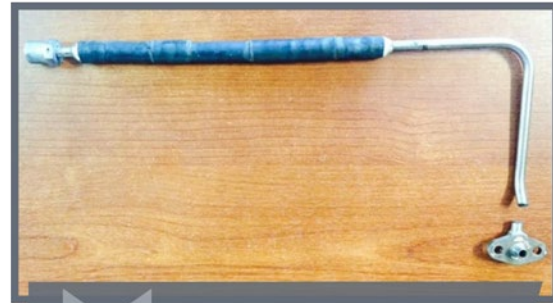
Power Loss Due to Broken P3 Line

SDR submitted:

The aeroplane was landing when one of its engines lost power. The pilot was able to land the aeroplane uneventfully. Inspection revealed the P3 line was broken. The tubing was replaced and the aeroplane returned to service.



P3 tube sheared off.



Example of broken line caused by mishandling.

Transport Canada Comments:

Previous experience indicates that this issue can be caused by mishandling of the tube. Proper alignment of the fittings is required to ensure that there isn't excess stress on the tube when final torque is applied. Pratt & Whitney Canada issued Service Information Letter (SIL) PT6A-026 and recently re-issued SIL PT6T-039 that highlights the proper procedures for the installation of pneumatic tubes. Transport Canada Civil Aviation recommends that maintainers familiarize themselves with the content of those SILs as well as standard practice information in manufacturers' maintenance publications.

New Oil Filter Found to be Defective

SDR submitted:

During the ground run following a scheduled oil and filter change inspection, the oil pressure failed to rise above 10 psi. The engine was shut down within 30 seconds. The oil pressure sender and gauge were swapped as these units have a history of failure

The oil pressure relief valve was inspected and re-surfaced using spot facing tool (even though the surfaces seemed good). A certified pressure gauge was installed to verify the oil pressure sender and aeroplane gauge accuracy and both were found serviceable during a second short run which showed less than 10 psi. The oil filter was replaced and the aeroplane was given another ground run. The oil pressure was well into the normal range and the ground run and leak check were completed.

Removal and opening of the oil filter revealed damage to the valve opposite to the coil spring. The coil spring was also noted as possibly distorted when compared to another spring. The inside of the oil filter housing also had impact marks. The serviceable replacement filter was from the same batch and date code.



New filter assembly as removed from the factory housing with evidence of damage on the relief spring contact end.

Transport Canada Comments:

This event was a rare occurrence and an interesting snag that reemphasizes the importance of the post maintenance verification runs required by the Canadian Aviation Regulations (CARs).

BELL TEXTRON - CANADA, 206B

SDR # 20160314001

Defective Grease Fitting

SDR submitted:

During a servicing lubrication, the grease fitting stopped accepting grease. When the grease fitting was replaced with a new one, the ball and spring were dislodged out the back of the original grease fitting. The spring and ball were able to be retrieved without further disassembly of the swashplate assembly. It has been noticed that some of the replacement grease fittings might have insufficient swaging.

Transport Canada Comments:

Bell Helicopter has stated that reports are being regularly received from the field for defective NAS516-1A grease fittings. A revision to Bell Information Letter GEN-03-88 was issued to instruct operators to visually examine the grease fitting prior to and following grease lubrication. To provide additional information on components and helicopter models affected, Bell Helicopter also issued Operation Safety Notice GEN-11-44. Transport Canada Civil Aviation reminds maintainers to submit service difficulty reports for each defective grease fitting found.

HUGHES, 369D

SDR # 20150917008

Tail Rotor Blade Abrasion Strip Debonded

SDR submitted:

During a scheduled inspection, the leading edge erosion strip was found debonded during cleaning prior to the inspection. The erosion strip crinkled with finger pressure.

Transport Canada Comments:

Helicopter Technology Company, LLC (HTC), which is the Supplemental Type Certificate holder of the subject tail rotor blade, issued Mandatory Service Bulletin (MSB) 3100-4R4 on 10 May 2006 to address the debonded leading edge abrasion strip. Federal Aviation Administration Airworthiness Directive 2008-15-03 was issued on 25 June 2008, to ensure that the service bulletin is accomplished. The manufacturer's instructions for continued airworthiness does allow for some specific voids under the abrasion strip. However, no voids are permitted at the edge of the strip and any void found at that location will need to be addressed prior to next flight.



Debonded abrasion strip on tail rotor blade.

Loose Air Filter Gasket

SDR submitted:

Both gaskets (one on each side of the filter) are coming off the air filter and could be ingested into the carburetor causing engine failure.

Transport Canada Comments:

The air filter has a bonded gasket on both sides. If the gasket were to become loose, it could create a potentially unsafe condition by obstructing the intake of the carburetor. The Robinson Helicopter Company has issued Service Bulletin 87, issued 14 October 2014, addressing this condition and suggests that exposure to aviation gasoline may be a cause for the gasket to become detached.



Example of the gasket becoming detached from the air filter.

CESSNA, R182

SDR # 20160422002

Oil Pressure Loss

SDR submitted:

During an engine ground run, an oil pressure drop was noted and oil was found leaking into the cockpit. The engine oil pressure line was found punctured from corrosion where it passes through the firewall into the cockpit.

Transport Canada Comments:

When installing components or performing visual inspections, maintainers are reminded to be diligent for potential corrosion effects and or chaffing between lines, conduits, hoses, electrical harnesses, structure, etc. The direct reading oil pressure indicators found in many general aviation aircraft present an inherent risk of hot lubricating oil being released into the cabin, creating a risk of injury to personnel. It is critical that any lines or wire bundles be properly secured against excessive movement or undesired contact between surfaces that could lead to corrosion or chaffing damage. The area behind the instrument panel can be a challenge as it is often difficult to access and may have multiple sources of potential undesired contact or chaffing situations.



Corroded part number 0700099-37 oil pressure line.

SUSPECTED UNAPPROVED PARTS (SUP)

In Canada, SUPs are reported in accordance with section 571.13 of the standard of the *Canadian Aviation Regulation (CAR)*.

When you suspect an unapproved part, the SUP report can be submitted on the *SDR form* or through this Internet link at www.tc.gc.ca/wsdrs.

Make/Model	Jasc	Part Name	Part Number	Part Condition	SDR No.	RGN
CESSNA						
EQUIPMENT	2000	AIR BOX	75014433	NEW	20160927013	PNR
CONVAIR - CAN						
CV580440	2000	FUEL PRESSURE SWITCH	42G88	USED	20160705012	PAC
EQUIPMENT						
EQUIPMENT	2000	BOLT	NAS147ADH26	UNAPPROVED	20160915033	PAC
EQUIPMENT	2000	TRANSMISSION	369D25100507	UNAPPROVED	20160822024	NCR
KING						
69102439	2000	TRANSISTOR	7003810002	SHORT CIRCUIT	20160524025	ONT
TEAM						
ACP2531	2000	KNOB	106429AB01	BOGUS PART	20160726002	QUE
HUGHES						
369D	2000	TRANSMISSION	369D25100507	UNAPPROVED	20160822024	NCR

FAA UNAPPROVED PARTS NOTIFICATIONS (UPN)

Unapproved Parts Notifications are published by: FAA, AIR-140, P.O. Box 26460, Oklahoma City, OK 73125. They are posted on the Internet at: <http://www.faa.gov/aircraft/safety/programs/sups/upn/>

Number	Subject	Date Posted
2016-2016SW56001	NavWorx, Incorporated remotely mounted Universal Access Transceiver (UAT) model ADS600-B with part numbers 200-0012 and 200-0013, with software release 4.0.6	2016-10-14
2016-20160316004	Boeing bushings, Part Number BACB28AK07-465, sold by Wesco Aircraft and Fitz Aerospace (dba ESNA)	2016-9-30
2016-20160212004	Commercial Aircraft [also self-identified as Commercial Aircraft Equipment (CAE) or Biskay Commercial Aircraft Equipment] manufactured and sold articles without FAA production approval	2016-9-1
2016-20160519004	AmSafe Inc. Restraint System, Subassemblies and articles	2016-8-17
2016-20160701032	Aerostop Seat Locks	2016-8-11
2016-20121019011	Intel microprocessor, Intel part number MG80C186-12/B, government part number 5962-8850102ZA	2016-7-27
2016-20151209008	Floating Miniature Nuts-stake, part number MF7200-06, procured from EagleFlite	2016-7-19
2016-20110831001	Aveo Engineering Aircraft Exterior Light Emitting Diode (LED) Lights – (UPN RESCISSION)	2016-6-20 (Rescinded 2016-10-26)

FAA SPECIAL AIRWORTHINESS INFORMATION BULLETINS (SAIB)

A Federal Aviation Administration (FAA) SAIB is an information tool that alerts, educates, and makes recommendations to the general aviation community. It is non-regulatory information and guidance that does not meet the criteria for an Airworthiness Directive (AD). www.faa.gov/aircraft/safety/alerts/SAIB/

SAIB Number	Make/Company	Subject	Issue Date
SW-17-01	BendixKing	Safety Navigation: BendixKing KSN 765/770	11/04/16
CE-16-27	Air Tractor, Inc.	Flight Controls, Trailing Edge (TE) Flap Control System	10/31/16
CE-16-26	Pilatus Flugzeugwerke AG	Fuselage – Pilatus Flugzeugwerke AG Models P3-03 and P3-05 Main Frame 3 – Wing to Fuselage Attachment Bolts -Inspection	10/06/16
HQ-16-25	Navigation	SBAS-capable FMS and GPS Equipment With No LP capability	09/28/16
NM-16-24	Learjet Inc.	Fuselage: Main Plate/Skin	09/15/16
CE-16-23	Embraer S.A.	Navigation; Degraded Attitude and Heading Reference System (AHRS) Performance When Operating in Areas of Unreliable or Unavailable Global Positioning System (GPS) Signal	09/07/16
NE-16-22	Pratt & Whitney Division	Turbine Engine Combustion Section – JT8D Series Turbofan Engines	09/02/16
HQ-16-05R1	Fuel	Fuel– Grade UL94 Unleaded Aviation Gasoline	08/30/16
NM-16-21	Boeing	Flight Controls	08/08/16
NM-16-20	All	Scheduled Maintenance Checks	08/03/16
NE-16-19	Honeywell International Inc.	Turbine Engine Compressor Section – Stator Nozzle Distress	07/22/16

European Aviation Safety Agency (EASA) SIB is an information tool that alerts, educates, and makes recommendations to the general aviation community. It is non-regulatory information and guidance that does not meet the criteria for an Airworthiness Directive (AD). <http://ad.easa.europa.eu/sib-docs/page-1>

SIB Number	Subject	Issue Date
2016-18	Dynamic Rollout during Hoisting and/or External Sling Load Operations	11/28/16
CASA-2016-11	Bell Helicopter Textron Canada 206L helicopters - Inspection and Replacement of Engine Mount Legs	11/24/16
2016-17	Learjet Inc. Model 60 Aeroplanes - Inspection of Upper Fuselage Skin under the Aft Oxygen Line Fairing	11/17/16
2016-16	AMSAFE Restraint Systems - Jammed Cockpit Seat Belt Buckles	10/14/16
2016-14R1	[Correction] Safety precautions regarding the transport by air of damaged, defective or recalled lithium batteries	10/13/16
2016-15	Improperly Crimped Spark Plugs	09/30/16
2016-13	WITHDRAWN - REPLACED BY EASA SIB 2016-14	09/09/16
2016-12	Notification of Suspected Unapproved Propellers	09/08/16
2014-08R1	Cold Soaked Fuel Frost Dispatch	08/10/16
2016-11	Robinson R22, R44 and R66 helicopters - EASA Operational Suitability Data - Flight Crew Data	08/09/16
BEA-2016-01	Embraer EMB-505 Aeroplanes - Yaw Damper Fail Due to Unreliable or Unavailable GPS Signal	08/04/16
2016-10	Robinson R22, R44 and R66 helicopters - Risk of flight in turbulent atmosphere	07/29/16
2016-09	Minimum Cockpit Occupancy	07/21/16
2016-08	Portable Electronic Devices belonging to the Operator	07/15/16

Transport Canada (TC) endeavours to send copies of new Airworthiness Directives (ADs), which are applicable in Canada to the registered owners of the affected products. Equipment/appliance ADs are often only distributed to our regional offices because the owners of aircraft affected by this type of AD are not generally known.

Aircraft Maintenance Engineers (AMEs) and operators of the affected products are encouraged to obtain further information or a copy of the ADs from their regional TC office, their local Transport Canada Centre (TCC), their Principal Maintenance Inspector (PMI), or from the Civil Aviation AD website at: www.tc.gc.ca/cawis-swimn

Manufacturer	AD Number	Origin	Description
B/E AEROSPACE	11/20/16	US	ATA 35 - INSPECTION OF PBE (P/N) 119003-11 AND REPLACEMENT WITH (P/N) 119003-21 WITHIN PER AD INSTRUCTIONS.
AIRMOTIVE, ECI	2016-16-12	US	ATA -72 ENGINES - CRACKED AND LEAKING ALUMINUM CYLINDER HEADS AND CYLINDER HEAD SEPARATIONS
GLOBAL, STC SE00034EN	2016-14-10	US	ATA 72 - TO PREVENT UNCONTAINED RELEASE OF MULTIPLE TURBINE BLADES, DAMAGE TO THE ENGINE, AND DAMAGE TO THE AIRPLANE.
ZODIAC	2016-0163	EU	ATA 25 – EQUIPMENT / FURNISHINGS – CABIN ATTENDANT SEAT – MODIFICATION / REPLACEMENT
ZODIAC	2016-0164	EU	ATA 25 – EQUIPMENT / FURNISHINGS – CABIN ATTENDANT SEAT – INSPECTION
ZODIAC	2016-0167	EU	ATA 25 – EQUIPMENT / FURNISHINGS – REAR CABIN ATTENDANT SEAT – INSPECTION / REPAIR
ADAMS, AEROSTAR, BALLOON WORKS, BALONY KUBICEK, CAMERON BALLOONS, CAMERON BALLOONS US, CLOUD 69, COLT BALLOONS, FANTASY, GALAXY BALLOONS, GENERAL BALLOON, HOKAN COLTING, INTHEAIR, JRDS, LIND, LINDSTRAND BALLOONS, LOPUSHINSKY, PICCARD, RAVEN, ROCKET, RVB, SEMCO, SHELDRAKE, SIDNEY CONN, SKYPOWER, SUNDANCE BALLOONS, THUNDER BALLOONS, ULTRAMAGIC, WHELAN	CF-2016-29	CF	ATA 28 - FUEL SYSTEM - PROPANE LEAKS ON BURNERS EQUIPPED WITH FUEL HOSES MADE OF EGEFLEX MATERIAL

SERVICE DIFFICULTY REPORTS (SDR)

LEGEND

JASC: Joint Aircraft System Code number defining assembly/system/components

SDR No.: Transport Canada Civil Aviation (TCCA) assigned SDR control number — please quote in any correspondence or inquiries

Region (RGN): TCCA region of SDR submitter:

PAC = Pacific

ONT = Ontario

ATL = Atlantic

VAR = Various

PNR = Prairie and Northern

QUE = Quebec

NCR = Ottawa (Headquarters)

AIRCRAFT

AERO COMMANDER

Make/Model	Jasc	Part Name	Part Number	Part Condition	SDR No.	RGN
690A	2911	HYDRAULIC REGULATOR	EA1563	FAILED	20160506003	PAC

AEROSPATIALE

Make/Model	Jasc	Part Name	Part Number	Part Condition	SDR No.	RGN
ATR 42 300	1410	HYDRAULIC FLEX LINE	AS117060143	RUPTURED	20160517002	ONT
ATR 42 300	2731	SHAFT-FLEXIBLE	626932	DAMAGED	20160928016	ONT
ATR 42 320	4920	AIR CYCLE MACHINE	2204404	BLADE BROKEN	20160506005	PNR
ATR 42 320	2340	ATTENDANT HANDSET	AH2542AE01	FAILED	20160728017	ONT
ATR 42 320	3442	WAVE GUIDE	FH0842F	CRACKED	20160805004	ONT
ATR 42 500	3230	LANDING GEAR CONTROL VALVE	1005383Y00	FAILED	20160527011	ONT
ATR 72 202	2435	BRUSHES	EHRP607965	WORN	20160629019	PNR

AEROSPATIALE HC

Make/Model	Jasc	Part Name	Part Number	Part Condition	SDR No.	RGN
AS 350B2	2910	HOSE HYDRAULIC TAIL ROTOR	704A34412252	NEW	20160502003	QUE
AS 350B2	2910	HYDRAULIC HOSE	704A34412252	LEAKING	20160401001	QUE
AS 350B2	2910	HYDRAULIC HOSE TAIL ROTOR	704A34412252	NEW	20160620011	QUE
AS 350B2	6520	TAIL ROTOR GEARBOX	350A33020005	OVERHAULED	20160613009	PNR
AS 350B2	6520	TAIL ROTOR GEARBOX	350A33020005	REPAIRED	20160613010	PNR
AS 350B2	2822	FUEL BOOST PUMP	P94B12208	UNSERVICEABLE	20160706003	ONT
AS 350B2	2900	HYDRAULIC HOSE TAIL ROTOR	704A34412252	IN USE	20160921009	QUE
AS 350B2	6410	LAMINATE 1/2 SHELL BEARING	704A33633261	CRACKED	20160714022	ONT
AS 350B3	6230	SPACER	704A33640021	NEW	20160405011	PNR

Make/Model	Jasc	Part Name	Part Number	Part Condition	SDR No.	RGN
AS 350B3	7700	GATE 3 POSITION	925UN01Q4AA5F	FAILED	20160421008	PAC
AS 350B3	2435	BRUSH	150SG10095	WORN	20160715004	PNR
AS 350B3	6520	TAIL ROTOR GEARBOX	350A33020007	DEBRIS	20160727004	ONT
AS 350BA	2910	HYDRAULIC HOSE	704A34412255	LEAKING	20160531005	PNR
AS 350BA	7320	BALL JOINT	5529	SEPARATED	20160520002	QUE
SA 365N1	2913	DOUBLE HYDRAULIC PUMP	704A34310019	MAKING METAL	20160615030	PAC

AGUSTA

Make/Model	Jasc	Part Name	Part Number	Part Condition	SDR No.	RGN
A109S	7921	OIL COOLER FAN	109045501101	FAILURE	20160725006	PNR
AW139	2400	CONTACTOR	11526203	BURNT	20160426024	ONT
AW139	6320	MAIN ROTOR GEARBOX	4G6320A00133	MAKING METAL	20160628006	ONT
AW139	6410	TAIL ROTOR BLADE ASSEMBLY	4G6410A00133	BURNING SMELL	20160404007	PNR
AW139	2200	SMART LINEAR ROLL ACTUATOR	184863	FAILURE	20160729002	ONT
AW139	2421	ALTERNATING CURRENT (AC) GENERATOR	GCA45A12A	LOOSE	20160909012	ONT
AW139	6220	BODY END ASSEMBLY	M00601H002041	ROTATION OF BRG	20160720011	PNR

AIR TRACTOR

Make/Model	Jasc	Part Name	Part Number	Part Condition	SDR No.	RGN
AT 502B	2100	KEY	98493A117	SHEARED	20160711018	PNR
AT 502B	2100	KEY	98493A117	SHEARED	20160711019	PNR
AT 802A	2720	PULLEY SMALL	MS245661B	GOOD	20160413022	PAC
AT 802A	3246	STEP FORWARD	10A02350021	UNSERVICEABLE	20160623006	PAC
AT 802A	3246	STEP FORWARD	10A2350021	UNSERVICEABLE	20160623007	PAC
AT 802A	5343	BOLT/NUT	AN815A	GOOD	20160510005	PAC
AT 802A	5343	BOLT/NUT	AN815A	GOOD	20160513006	PAC

AIRBUS

Make/Model	Jasc	Part Name	Part Number	Part Condition	SDR No.	RGN
A310 304	2820	PACKING	MS9021143	PINCHED	20160526004	QUE
A310 304	3220	TELESCOPIC STRUT	C231098102	FAULTY	20160506007	QUE
A310 304	5315	PANEL ASSEMBLY	A53510994001	MISSING	20160509010	QUE
A310 304	2900	PRIORITY VALVE	459901	SEPARATED	20160826001	QUE
A310 308	3230	DOOR UNLOCK ACTUATOR	A254310012	FAULTY	20160530007	QUE
A319 112	2913	HYDRAULIC PUMP ASSEMBLY PACKAGE	974540	FAILED	20160411002	QUE
A319 114	2120	SKIN AIR OUTLET VALVE	VFT300A1	FAILED	20160719001	QUE
A319 114	2131	OUTFLOW VALVE	90231570371	FAILED	20160815010	QUE
A319 114	2911	HYDRAULIC PUMP	3031863001	FAULTY	20160908005	QUE
A319 114	2913	MANIFOLD	D2907017500200	LEAKING	20160823007	QUE
A319 114	2924	CHECK VALVE	ZCV6367	FAILED	20160823014	QUE
A319 114	3242	BRAKE PEDAL TRANSMITTER	C20215000	FAILED	20160729018	QUE
A319 114	7311	FUEL RETURN VALVE	3017837010	LEAKING	20160817016	QUE
A320 211	2150	EYEBALL SOCKET		ODOR	20160620007	QUE
A320 211	2720	BOLTS		LOOSE	20160429003	QUE

Make/Model	Jasc	Part Name	Part Number	Part Condition	SDR No.	RGN
A320 211	3244	TIRE		FLAT	20160412011	QUE
A320 211	5330	FUSELAGE		DAMAGED	20160620009	QUE
A320 211	5610	SLIDING #2 LEFT-HAND WINDOW	D5311001901201	CRACKED	20160414011	QUE
A320 211	2611	SMOKE LAVATORY DETECTOR	GPA120300	FAULTY	20160822017	QUE
A320 211	2750	FLAPS		FAULTY	20160725002	QUE
A320 211	2910	LOW LEVEL SWITCH	C60AA0062	FAILED	20160817018	QUE
A320 211	2913	O-RING		DAMAGED	20160909002	QUE
A320 211	3231	CONTROL INTERFACE UNIT	664700500A4D	FAILED	20160829017	QUE
A320 211	5610	LEFT-HAND WINDSHIELD	NP1653117	CRACKED	20160901002	QUE
A321 211	2751	FLAP & SLAT POWER CONTROL	786A000012	FAILED	20160609004	QUE
A321 211	7300	CIRCUIT BREAKER	NSA931324030	FAILED	20160408002	QUE
A321 211	2530	HIGH TEMPERATURE OVEN	8201170000	OVERHEATED	20160815005	QUE
A321 211	2911	HYDRAULIC PUMP	3031863001	LEAKING	20160826002	QUE
A321 211	3442	WEATHER RADAR TRANSCIVER	6225132120	FAILED	20160802008	QUE
A330 243	2722	SERVO CONTROL - RUDDER	31115080	FAULTY	20160418011	QUE
A330 343	2900	SAFETY VALVE		FAILED	20160627012	QUE
A330 343	2530	OVEN		OVERHEATING	20160805002	QUE

BEECH

Make/Model	Jasc	Part Name	Part Number	Part Condition	SDR No.	RGN
100	2740	STABILIZER ACTUATOR	1153801111	FAILED	20160524030	PNR
1900C	3230	BRACKET	1148200771	FAILED	20160429006	ATL
1900C	3260	SWITCH	H111541	CORRODED	20160509012	ATL
1900C	2730	SCREW	MS27039C109	WEAR MARKS	20160726008	PNR
1900C	3244	TIRE	196K089	WORN	20160711008	QUE
1900D	2430	DIRECT CURRENT (DC) POWER PANEL	1293800161	CORRODED	20160513001	ATL
1900D	3497	CONNECTOR	J1B	MISCONFIGURED	20160513009	PAC
1900D	5310	ANGLE	1294200343	CRACKED	20160614009	ATL
1900D	6123	HIGH PRESSURE SWITCH	5038912121	UNSERVICEABLE	20160509001	ATL
1900D	7530	TUBE ASSEMBLY	3036443	UNSERVICEABLE	20160603001	ATL
1900D	8011	STARTER	23078019	FAILED	20160608002	ATL
1900D	0	AUXILIARY FUEL PUMP	1C645	LOW TRANSFER	20160829011	ATL
1900D	2422	DC POWER PANEL	1293800161	INTERMITTENT	20160705006	ATL
1900D	3130	ELBOW/SWIVEL	MS51521B4	CORRODED	20160817026	ATL
1900D	3230	LANDING RELAY	MS24171D1	ARCHING	20160921001	ATL
1900D	3230	MOTOR ASSEMBLY-ELECTRIC	571302	FAILED	20160803001	ATL
1900D	3260	DOWNLOCK SWITCH	1003810061	FAILED	20160725001	ATL
1900D	5120	PACKING	M834611141	DIMENSIONAL	20160823008	ATL
1900D	5320	DOUBLER		CORRODED	20160725013	PNR
1900D	6140	PROPELLER RPM INDICATOR	1143800663	FAILED	20160725008	ATL
1900D	7314	ENGINE DRIVEN FUEL PUMP	1143890427	FAILED	20160901001	ATL
58	3220	NOSE GEAR AFT DRAG	282001631	SERVICEABLE	20160616001	ONT
95B55	3233	SECTOR GEAR	35810117	STRIPPED GEAR	20160602011	PNR
A100	2730	ELEVATOR TORQUE TUBE	115610015191	CRACKED	20160509014	QUE
A100	3233	GEAR MOTOR	1153800025	OVERHAULED	20160527016	QUE
A100	7140	ENGINE MOUNT HOUSING	LM41232	CRACKED	20160425002	ONT
A100	2730	ELEVATOR TORQUE TUBE	115610010325	CRACKED	20160818007	QUE
A100	2730	ELEVATOR TORQUE TUBE	115610010383	CRACKED	20160818008	QUE

Make/Model	Jasc	Part Name	Part Number	Part Condition	SDR No.	RGN
A100	3230	RELAY	6041H189	PITTED	20160822011	QUE
A100	3233	O-RING	MS28775116	CUT	20160808002	QUE
A100	3240	BRAKE LINE	1005800143	CORRODED	20160708004	QUE
A100	7600	THROTTLE CONTROL LEVER	505245671	WORN	20160809004	ONT
B200	2130	BLEED AIR PRESSURE SWITCH	903800023	FAILED	20160617003	PNR
B200	2720	BEARING	F1123	WORN	20160601014	PNR
B200	3233	LEFT-HAND MAIN LANDING GEAR ACTUATOR	1013880141	LEAKING	20160613005	PNR
B200	2100	CONDENSER BLOWER	1013840045	WORN BEARINGS	20160915032	PNR
B200	2435	STARTER GENERATOR	23048016	OVERHAULED	20160915024	PNR
B200	2510	CABLE ASSEMBLY	1579540023	BROKEN	20160725017	PNR
B200	3210	METERING PIN		BENT	20160802019	PNR
B200	3230	AFT NOSE LANDING GEAR CHAIN	131378252405	LOOSE	20160826006	PNR
B200	3242	STAT-O-SEAL	9502600	LEAKING	20160915028	PNR
B200	3452	TRANSPONDER	6221270001	FAILED	20160920022	PNR
B200	5210	SUPPORT BRACKET	9053014413	CRACKED	20160915030	PNR
B200	5310	CROSS TIE	97430000150	CRACKED	20160822021	PNR
B200	7800	STACK ASSEMBLY	1019500231AW	CRACKED	20160725015	PNR
B200GT	2810	FUEL CELL FLANGE	5038903417	DELAMINATED	20160428011	PNR
B200GT	7160	ANTI-ICE VANE DOOR	101910020605	UNSERVICEABLE	20160526008	PNR
B300	2120	CLAMP	AN737TW66	UNSERVICEABLE	20160617001	ATL
B300	2913	POWER PACK ASSEMBLY	10138800521	IN SERVICE	20160527019	PAC
B300	5210	DOOR LATCH BOLT	5043001811	IN SERVICE	20160510006	PAC
B300	2140	BOX CONTROLLER	30007503	UNSERVICEABLE	20160922003	ATL
B300	5320	CROSS TIE	97430000150	BROKEN	20160901007	PNR
B300	5610	WINDSCREEN RIGHT-HAND	10138402524	CRACKED	20160708001	ATL
B300C	2720	BEARING	MS289135C	DAMAGED	20160623004	ATL
B300C	2810	CELL ASSEMBLY LEFT HAND	253419	IN SERVICE	20160517005	PAC
B300C	5600	WINDSHIELD ASSEMBLY	1013840257	CRACKED	20160704006	ATL
B99	5330	NOSE SKIN	994000113	CRACKED	20160803003	PAC
C90A	7603	BRAKE ASSEMBLY	10052419615	WORN	20160419004	ONT
C90A	2130	FLEXIBLE TUBE	131823E6M2380	COLLAPSED	20160707001	ONT
E55	0	DOOR LATCH INSIDE STOP	354004623	WRONG PART	20160519008	ONT
E90	5330	BELLY SKIN	5012015682	CRACKED	20160908006	PNR

BELL TEXTRON – CAN

Make/Model	Jasc	Part Name	Part Number	Part Condition	SDR No.	RGN
206B	2840	FUEL SENDER	EA4703587	UNSERVICEABLE	20160428005	PNR
206B	6320	UPPER BEARING	206040036101	FAILED	20160405012	PAC
206B	6410	TAIL ROTOR BLADE	206016201137	NEW	20160615022	ONT
206B	6720	PITCH CHANGE ASSEMBLY	206011724109	SCORED	20160428008	PNR
206B	7320	ROD	206061745101	CRACKED	20160422004	QUE
206B	5310	FRAME	206031308015	CRACKED	20160715005	PNR
206L	2435	STARTER GENERATOR	150SG117Q	SHAFT SHEARED	20160714024	PNR
407	2840	CABLE ASSEMBLY FUEL SYSTEM	407076501111	OVERHEATED	20160527010	QUE
407	5530	TAIL SKID ASSEMBLY	206020110103	BROKEN	20160614023	PAC
407	7600	THROTTLE CABLE	C807382	BROKEN	20160401014	PAC
407	5530	SKID ASSEMBLY TAIL	206020110103	UNSERVICEABLE	20160824004	PAC
407	6220	BEARING ADAPTER	406010107105	CRACKED	20160902002	QUE
429	2810	FUEL CELL	429366421103	LEAKING	20160401010	QUE
429	5412	FIREWALL	429069504105	CRACKED	20160401011	QUE
429	5412	FIREWALL	429069504105	CRACKED	20160404002	QUE
429	5412	MID FORWARD FIREWALL	429069501113	CRACKED	20160408001	ONT

Make/Model	Jasc	Part Name	Part Number	Part Condition	SDR No.	RGN
429	6710	ROD END	429010433103	FAILURE	20160527007	QUE
429	2435	BRUSHES	200SGL1009	WORN BEYOND LIMT	20160822023	ONT
429	6410	BLADE	429016101105	CRACKED	20160919015	QUE
429	6720	TAIL ROTOR PITCH LINK ASSEMBLY	429012112113	FAILED	20160909010	QUE

BELL TEXTRON – USA

Make/Model	Jasc	Part Name	Part Number	Part Condition	SDR No.	RGN
205A 1	2913	#2 HYDRAULIC PUMP	2120760111	BOLTS SHEARED	20160601006	PAC
205A 1	6730	COLLECTIVE SERVO	205076301	LEAKING	20160601007	PAC
212	3210	HIGH FORWARD CROSSTUBE	212321103	BROKEN	20160615025	PAC
212	0	T-FITTING	AN93810	UNSERVICEABLE	20160714027	ONT
212	6400	BOLT	EWB26D434	SHEARED BOLT	20160928012	PNR

BELLANCA

Make/Model	Jasc	Part Name	Part Number	Part Condition	SDR No.	RGN
8GCBC	2731	TAB - ELEVATOR	4562	CRACKED	20160718002	PNR
8GCBC	3246	AXLE	22296	SCRAP	20160818003	ONT

BOEING

Make/Model	Jasc	Part Name	Part Number	Part Condition	SDR No.	RGN
727 260	2750	PIN	MS203922C25	DAMAGED/MIGRATED	20160929005	ONT
737 248C	5751	AILERON	65464541	DELAMINATED	20160531002	ONT
737 2Q2C	5755	GROUND SPOILER ACTUATOR	65449617	CRACKED	20160809002	QUE
737 33A	5755	ACTUATOR	654485113	END BROKEN	20160729020	QUE
737 406	2500	BLOWOUT PANEL	34053000919	DAMAGED	20160613007	ONT
737 406	3417	AIR DATA COMPUTER	4061100901	FAILED	20160620001	ONT
737 406	7500	PRECOOLER	1947924	CRACKED	20160527005	ONT
737 46B	3233	NOSE LANDING GEAR RETRACT ACTUATOR	65446104	USED	20160831010	PAC
737 4K5	3310	LIGHT ASSEMBLY	65029421	FAILED	20160912011	PAC
737 4Q8	3246	WHEEL	26098011	CRACKED	20160819013	PAC
737 76N	5610	CAPTAIN #1 WINDOW	5893543149	CRACKED	20160707003	PNR
737 7CT	2121	RECIRCULATION FAN	6454052	FAILING	20160516003	PNR
737 7CT	3246	TIE BOLT	2613109	LOOSE	20160519009	PNR
737 7CT	5200	DOOR		WORN	20160418009	PNR
737 7CT	2350	AUDIO CONTROL PANEL	5145177	FAULTY	20160906010	PNR
737 7CT	3246	TIE BOLT	2613109	BROKEN	20160705020	PAC
737 7CT	3246	TIE BOLT	26123012	LOOSE	20160704009	PNR
737 808	3246	MAIN WHEEL ASSEMBLY	C20626200	DAMAGED	20160712006	ONT
737 8CT	2710	AILERON BALANCE PANEL	113A730017	MISSING HARDWARE	20160614017	PNR
737 8CT	7230	#1 ENGINE WASH		SMOKE IN COCKPIT	20160516001	PNR
737 8CT	8011	VALVE-STARTER SHUT-OFF	32896302	CHAFING WIRE	20160923014	PNR
737 8Q8	3230	SPRING	161A61143	MISSING	20160901005	QUE
757 223	2913	CASE		REPAIRED	20160815004	ONT
767 306	3251	ROD END	275T62272	CORRODED	20160722002	ONT
767 338	2700	OUTPUT CONTROL ROD		DISCONNECTED	20160519012	PNR

Make/Model	Jasc	Part Name	Part Number	Part Condition	SDR No.	RGN
767 338	2731	WASHERS		MISSING	20160627009	PNR
767 338	2780	SLAT DRIVE COUPLING	256T28011	MISSING SCREWS	20160602013	PNR
767 33A	2913	HYDRAULIC PUMP	3031863001B767	LEAKING	20160825004	QUE
767 35E	2900	FILTER BOWL	271T006810	STRIPPED THREADS	20160803006	ONT
767 375	3241	ANTI SKID CONTROL VALVE	39617	FAILED	20160627011	QUE
777 233LR	2120	COOLING FAN	4100943C	DEFECT	20160506002	QUE
777 233LR	2530	LONG OVEN	8203170000	FAILED	20160614003	QUE
777 333ER	2530	STEAM OVEN	4323070006626	FAILED	20160617002	QUE
777 333ER	2121	COOL FAN	4100941C	FAILED	20160808010	QUE
777 333ER	2530	LONG OVEN	8203170000	FAILED	20160718006	QUE
777 333ER	2750	FLAP CONTROL		EICAS MSG	20160815011	QUE
787 9	2100	SECONDARY HEAT EXCHANGER		WATER IN IT	20160711001	QUE
787 9	2120	FAN MIXED FLOW	7110501H02502	FAILED	20160704004	QUE
787 9	2500	HEATER/LOWER BREW CUP	4610282200	DEFECT	20160915021	QUE
787 9	3510	OXYGEN CYLINDER	4441088115	LEAK	20160808011	QUE

BOMBARDIER

Make/Model	Jasc	Part Name	Part Number	Part Condition	SDR No.	RGN
BD 100 1A10	2133	SAFETY VALVE	81141A010303	FAILED	20160502002	QUE
BD 100 1A10	2200	DATA CONCENTRATOR UNIT	8221578007	NON-CONFORMANT	20160608009	QUE
BD 100 1A10	2200	FLIGHT GUIDANCE COMPUTER	8221592626	DEFECTIVE UNIT	20160426028	QUE
BD 100 1A10	2213	FLIGHT GUIDANCE COMPUTER	8221592626	NON-CONFORMANT	20160608008	QUE
BD 100 1A10	2130	SAFETY VALVE	81141A010303	FAILED	20160727007	QUE
BD 100 1A10	2133	OUTFLOW VALVE	88056A010102	FLUTTERING	20160705016	QUE
BD 100 1A10	3400	DISPLAY CONTROL PANEL	8221561001	FAILED	20160908013	QUE
BD 100 1A10	5210	PASSENGER DOOR SEAL	1005332313003	LEAKING	20160929004	QUE
BD 500 1A10	2120	DUCT ASSEMBLY PACK DISCHARGE	C08126501	DISBONDED DUCT	20160720002	QUE
BD 500 1A10	2700	PIN TO UNIVERSAL JOINT	C05500002005	WEARING/BINDING	20160720010	QUE
BD 500 1A10	2911	ACCUMULATOR	C71608402	LEAKING	20160923018	QUE
BD 500 1A10	3461	IMAA-6000 SOFTWARE	IMAA81003112B000	OPERATIONAL ISSUE	20160909006	QUE
BD 700 1A10	2520	HI-LOW CONFERENCE TABLE	SA001358001	NEW	20160606009	QUE
BD 700 1A10	2530	CONNECTOR	D3899926MJ24PN	SHORTED	20160415006	QUE
BD 700 1A10	2571	AUXILIARY POWER UNIT BATTERY	427CK1	USED	20160610005	QUE
BD 700 1A10	2780	PIN ASSEMBLY - SLAT 4	GM127181113	CHAFED	20160414014	QUE
BD 700 1A10	2810	PACKING O-RING	MS29513230	SPIRAL CUT	20160620002	QUE
BD 700 1A10	5514	BRACKET	GD24887503	CRACKED	20160503010	QUE
BD 700 1A10	7100	BOLT SELF-RETAINING	AS54020	BROKEN	20160428010	QUE
BD 700 1A10	2710	AILERON SERVO		FAULTY	20160729026	QUE
BD 700 1A10	3242	JOINT ASSEMBLY SWIVEL	AE87467G	BROKEN	20160919010	QUE
BD 700 1A10	3460	FLIGHT MANAGEMENT SYSTEM		MALFUNCTION	20160914007	QUE
BD 700 1A10	3461	FLIGHT MANAGEMENT SYSTEM		MALFUNCTION	20160720003	QUE
BD 700 1A10	3461	FLIGHT MANAGEMENT SYSTEM		MALFUNCTION	20160727003	QUE
BD 700 1A10	3461	FLIGHT MANAGEMENT SYSTEM		MALFUNCTION	20160902007	QUE
BD 700 1A10	3461	SOFTWARE		UNRESPONSIVE	20160915020	QUE

Make/Model	Jasc	Part Name	Part Number	Part Condition	SDR No.	RGN
BD 700 1A10	5532	VERTICAL STABILIZER SKIN	GD2444000GD24441	CORRODED	20160926012	QUE
BD 700 1A11	2300	AUDIO CONTROL PANEL	8222928500	FAILED	20160602003	QUE
BD 700 1A11	3050	EMERGENCY LOCATOR TRANSMITTER ANTENNA	11032801	CRACKED OFF	20160614005	QUE
BD 700 1A11	2420	VARIABLE FREQUENCY GENERATOR	GL51111039	REFURBISHED	20160902008	QUE
BD 700 1A11	2500	FITTING	CDSP1904503	CRACKED	20160926011	QUE
BD 700 1A11	3461	FLIGHT MANAGEMENT SYSTEM		MALFUNCTION	20160902005	QUE
CL600 2B19 (RJ100)	2750	SKEW DETECTION UNIT	8004301	FAILED	20160606004	QUE
CL600 2B19 (RJ100)	3200	MAIN LANDING GEAR TRUNNION	601R10031	CRACKED	20160425010	QUE
CL600 2B19 (RJ100)	3210	SIDE STAY ACTUATOR	17008115	LOOSE ROD END	20160503001	ATL
CL600 2B19 (RJ100)	3210	TRUNNION	601R100311112	CRACKED	20160428006	QUE
CL600 2B19 (RJ100)	3260	PROXIMITY SENSOR ELECTRONIC UNIT	864808	FAILED	20160614021	QUE
CL600 2B19 (RJ100)	3418	ANGLE OF ATTACK TRANSDUCER	C16258AB	FAILED	20160628012	QUE
CL600 2B19 (RJ100)	4940	AUXILIARY POWER UNIT STARTER	27044581	BURNT	20160412007	ATL
CL600 2B19 (RJ100)	5230	CHANNEL	601R3505025	CRACKED	20160511007	QUE
CL600 2B19 (RJ100)	5300	SIDE POST SUPPORT	601R3403221	CRACKED	20160405007	QUE
CL600 2B19 (RJ100)	5310	PRESSURE FLOOR	601R31025109	CRACKED	20160609002	QUE
CL600 2B19 (RJ100)	5310	PRESSURE FLOOR	601R31025109	CRACKED	20160609006	QUE
CL600 2B19 (RJ100)	5310	PRESSURE FLOOR SILL	601R311455	CORRODED	20160614018	QUE
CL600 2B19 (RJ100)	5310	PRESSURE FLOOR SKIN	601R3114627	CRACKED	20160427007	QUE
CL600 2B19 (RJ100)	5313	ANGLE	601R31522S0501	CRACKED	20160519010	QUE
CL600 2B19 (RJ100)	5313	INTERCOSTAL	60135012	CRACKED	20160620010	QUE
CL600 2B19 (RJ100)	5320	ANGLES	601R31037	CRACKED	20160411008	QUE
CL600 2B19 (RJ100)	5321	FLOOR SILL	601R31145	CORRODED	20160503008	QUE
CL600 2B19 (RJ100)	5400	LEFT-HAND PYLON WEB	6013700385	CORROSION	20160623002	QUE
CL600 2B19 (RJ100)	5410	SUPPORT BEAM	601350061	CRACKED	20160401005	QUE
CL600 2B19 (RJ100)	5420	PYLON CHANNEL	60137004	CRACKED	20160629025	QUE
CL600 2B19 (RJ100)	5440	ENGINE SUPPORT BEAM	60135006	CRACKED	20160517012	QUE
CL600 2B19 (RJ100)	5610	COCKPIT RIGHT SIDE WINDOW	NP13932212	CRACKED	20160422008	ATL
CL600 2B19 (RJ100)	5610	LEFT-HAND WINDSHIELD	NP139321	CRACKED	20160419007	QUE
CL600 2B19 (RJ100)	5700	ANGLE	6001020427	CRACKED	20160505010	QUE
CL600 2B19 (RJ100)	5700	PRESSURE FLOOR	601R31025109	CRACKED	20160516002	QUE
CL600 2B19 (RJ100)	5700	PRESSURE FLOOR SKIN	601R3114627	CRACKED	20160520006	QUE
CL600 2B19 (RJ100)	5730	TRUNNION	601R100686	CRACKED	20160509008	QUE
CL600 2B19 (RJ100)	5730	WING PLANK	601R10045	CORRODED	20160418010	QUE
CL600 2B19 (RJ100)	7230	ENGINE COMPRESSOR		INTERNAL DAMAGE	20160421006	QUE
CL600 2B19 (RJ100)	8011	STARTER	35051889	UNSERVICEABLE	20160419008	QUE
CL600 2B19 (RJ100)	1200	NOSE LANDING GEAR		SERVICING NEEDED	20160919006	QUE
CL600 2B19 (RJ100)	2200	FLIGHT CONTROL COMPUTER	6229815904	UNSERVICEABLE	20160908014	ONT
CL600 2B19 (RJ100)	2722	POWER CONTROL UNIT	274001	FRACTURED	20160928017	QUE
CL600 2B19 (RJ100)	2722	POWER CONTROL UNIT	274001	SHEARED	20160803010	QUE
CL600 2B19 (RJ100)	2750	BRAKE AND POSITION SENSING UNIT	855D100XX	SHORTED	20160719005	QUE
CL600 2B19 (RJ100)	2752	FLAP ACTUATOR	853D10023	JAMMED	20160921005	ATL
CL600 2B19 (RJ100)	2900	HYDRAULIC RESERVOIR ASSEMBLY	601R752193	BY-PASSING	20160729013	QUE
CL600 2B19 (RJ100)	3210	SIDE STAY PIN	170761	CORRODED	20160706001	ATL

Make/Model	Jasc	Part Name	Part Number	Part Condition	SDR No.	RGN
CL600 2B19 (RJ100)	3222	TOWBARLESS NOSE LANDING GEAR SLEEVE	H2351011	LOOSE	20160721036	QUE
CL600 2B19 (RJ100)	3230	MAIN LANDING GEAR UPLOCK	17051101	JAMMED	20160711015	QUE
CL600 2B19 (RJ100)	3230	NOSE LANDING GEAR		REQUIRED SERVICING	20160919005	QUE
CL600 2B19 (RJ100)	3230	NOSE LANDING GEAR PRIORITY VALVE	4622	FAILED	20160812005	QUE
CL600 2B19 (RJ100)	3230	PROXIMITY SENSOR ELECTRONIC UNIT	864808	FAILED	20160812008	QUE
CL600 2B19 (RJ100)	3233	UPLOCK ASSEMBLY	170518722101	DEFECTIVE	20160721042	QUE
CL600 2B19 (RJ100)	3234	NOSE LANDING GEAR SELECTOR	750006000	DEFECTIVE	20160908019	ONT
CL600 2B19 (RJ100)	3242	BRAKE ASSEMBLY	50105201	DRAGGING	20160819008	QUE
CL600 2B19 (RJ100)	3260	NOSE LANDING GEAR PROX SENSOR	88722642872202	DE-RIGGED	20160909015	QUE
CL600 2B19 (RJ100)	3444	RADIO ALTIMETER ANTENNA	S672002	UNSERVICEABLE	20160908017	ONT
CL600 2B19 (RJ100)	3610	14TH STAGE ENGINE COWL DUCT	14403103	INSULATION BLANK	20160920020	QUE
CL600 2B19 (RJ100)	4920	AUXILIARY POWER UNIT ASSEMBLY	38004888722X	CRACKED	20160923002	QUE
CL600 2B19 (RJ100)	5270	PROXIMITY SWITCH	840506	FAILED	20160704012	QUE
CL600 2B19 (RJ100)	5310	PRESSURE FLOOR SKIN	601R31146	CRACKED	20160706006	QUE
CL600 2B19 (RJ100)	5311	WEB	6003401033	CORROSION	20160721023	QUE
CL600 2B19 (RJ100)	5312	PRESSURE BULKHEAD	601R36008	PUNCTURE/PIERCED	20160912012	QUE
CL600 2B19 (RJ100)	5313	FRAME 349		CORRODED	20160912014	QUE
CL600 2B19 (RJ100)	5315	RIGHT-HAND FLOOR ANGLE	601R31145220	CORROSION	20160816006	QUE
CL600 2B19 (RJ100)	5320	SILL PLATE	601R3895731	CORRODED	20160705013	ATL
CL600 2B19 (RJ100)	5322	FLOOR SUPPORT ANGLE	601R35031	CORRODED	20160721035	QUE
CL600 2B19 (RJ100)	5330	EXTERIOR FUSELAGE SKIN	601R38328	CORROSION	20160816009	QUE
CL600 2B19 (RJ100)	5510	ANTI ROTATION FITTING	600210737	CRACKED	20160830014	QUE
CL600 2B19 (RJ100)	5511	FS280 BULKHEAD WEB		CRACKED	20160912015	QUE
CL600 2B19 (RJ100)	5532	STABILIZER PANEL	6002113429	HOLES CRACKED	20160705003	ATL
CL600 2B19 (RJ100)	5610	LEFT-HAND WINDSHIELD	NP139321	CRACKED	20160812006	QUE
CL600 2B19 (RJ100)	5610	WINDOW	NP139322X	SHATTERED	20160920017	QUE
CL600 2B19 (RJ100)	5610	WINDSHIELD	NP139321	CRACKED	20160817021	QUE
CL600 2B19 (RJ100)	5610	WINDSHIELD	NP139321XX	CRACKED	20160729014	QUE
CL600 2B19 (RJ100)	5710	WING LOWER PLANK	601R10045	CORROSION	20160712009	QUE
CL600 2B19 (RJ100)	7500	14TH STAGE LINE		LOOSE	20160817027	QUE
CL600 2B19 (RJ100)	7830	STOW SWITCH	4EN8887226	DE-RIGGED	20160909017	QUE
CL600 2B19 (RJ440)	5240	AFT LOWER PAN	601R38304375	CORRODED	20160629020	QUE
CL600 2B19 (RJ440)	5310	PRESSURE FLOOR	601R31146	CRACKED	20160629024	QUE
CL600 2B19 (RJ440)	5310	PRESSURE FLOOR SILL	601R31146	CORROSION	20160629028	QUE
CL600 2B19 (RJ440)	5313	PRESSURE FLOOR SKIN	601R3114627	CRACKED	20160629027	QUE
CL600 2B19 (RJ440)	5315	FLOOR BEAM CAP	601R31030	CORRODED	20160629023	QUE
CL600 2B19 (RJ440)	1400	PRESSURE FLOOR SILL	601R31145	CORRODED	20160816004	QUE
CL600 2B19 (RJ440)	3210	LEFT & RIGHT-HAND TRUNNIONS	601R10031	CRACKED	20160705010	QUE
CL600 2B19 (RJ440)	5210	DOUBLER	601R3152727	CORRODED	20160816008	QUE
CL600 2B19 (RJ440)	5310	PRESSURE FLOOR SILL	601R31145	CORRODED	20160721026	QUE
CL600 2B19 (RJ440)	5310	PRESSURE FLOOR SKIN	601R31146	CRACKED	20160906008	QUE
CL600 2B19 (RJ440)	5310	SACRIFICIAL PLATES	601R310227	CORROSION	20160901004	QUE
CL600 2B19 (RJ440)	5311	FRAME	601R3200441	CRACKED	20160721041	QUE
CL600 2B19 (RJ440)	5311	PRESSURE FLOOR SILL ANGLE	601R31145	CORROSION	20160729015	QUE

Make/Model	Jasc	Part Name	Part Number	Part Condition	SDR No.	RGN
CL600 2B19 (RJ440)	5312	PRESSURE BULKHEAD CAP ANGLE	601R3202651	CRACKED	20160816003	QUE
CL600 2B19 (RJ440)	5312	PRESSURE BULKHEAD WEB	601R36008	CRACKED	20160705005	QUE
CL600 2B19 (RJ440)	5312	PRESSURE BULKHEAD WEB	601R36008	CRACKED	20160713018	QUE
CL600 2B19 (RJ440)	5312	PRESSURE BULKHEAD WEB	601R36008	CRACKED	20160729019	QUE
CL600 2B19 (RJ440)	5315	FLOOR BEAM	601R35031225	CRACKED	20160823010	QUE
CL600 2B19 (RJ440)	5315	FLOOR CROSSBEAM	601R32005	CORROSION	20160708005	QUE
CL600 2B19 (RJ440)	5315	FLOOR STRUCTURE SPLICE	6003501145	CORROSION	20160816007	QUE
CL600 2B19 (RJ440)	5315	LONGITUDINAL FLOOR BEAM	601R31117	CORROSION	20160707002	QUE
CL600 2B19 (RJ440)	5315	PRESSURE FLOOR SILL	601R31145219	CORRODED	20160816005	QUE
CL600 2B19 (RJ440)	5321	FLOOR SILL ANGLE	601R31145	CORROSION	20160729012	QUE
CL600 2B19 (RJ440)	5321	PRESSURE FLOOR SILL	601R31145	CORRODED	20160819002	QUE
CL600 2B19 (RJ440)	5330	FUSELAGE SKIN	601R35005	DENTS	20160829001	QUE
CL600 2B19 (RJ440)	5330	LOWER FUSELAGE SKIN	601R35005	CORROSION	20160906005	QUE
CL600 2B19 (RJ440)	5730	LOWER WING PLANK	601R10046	CRACKED	20160713019	QUE
CL600 2B19 (RJ440)	5730	WING PLANK	601R1045	CORROSION	20160907008	QUE
CL600 2B19 (RJ440)	7830	ENGINE TORQUE BOX	22850200	DAMAGE	20160906007	QUE
CL600 2C10 (RJ700)	2200	ELEVATOR SERVO CABLE	BA6709321035	CORRODED	20160418013	QUE
CL600 2C10 (RJ700)	2422	INVERTER	SPC10V	FAILED	20160407005	QUE
CL600 2C10 (RJ700)	2710	AILERON FEEL UNIT		FELT WEAK	20160606008	QUE
CL600 2C10 (RJ700)	2900	HYDRAULIC HOSES	AE713578	DAMAGED	20160524027	QUE
CL600 2C10 (RJ700)	3222	NOSE LANDING GEAR OUTER CYLINDER	521015	CORRODED	20160629022	QUE
CL600 2C10 (RJ700)	5311	FRAME 333	SH67031356	CORRODED	20160418008	QUE
CL600 2C10 (RJ700)	5311	FRAME 333	SH67031356	CORRODED	20160509015	QUE
CL600 2C10 (RJ700)	5311	FRAMES 549 AND 565	CC670332127	CORRODED	20160415007	QUE
CL600 2C10 (RJ700)	5311	SKIN	SH690313511	CORRODED	20160425009	QUE
CL600 2C10 (RJ700)	5313	STRINGERS	MM67035151	CORRODED	20160505009	QUE
CL600 2C10 (RJ700)	5321	FLOOR WEB	CC670331667	CRACKED	20160412010	QUE
CL600 2C10 (RJ700)	5610	LEFT-HAND WINDSHIELD	NP139321	CRACKED	20160419010	QUE
CL600 2C10 (RJ700)	5610	WINDSHIELD	NP139321	CRACKED	20160614020	QUE
CL600 2C10 (RJ700)	5730	WING PLANK	CC69010045	CORRODED	20160509013	QUE
CL600 2C10 (RJ700)	5753	SLAT TRACK	CC670120107	CORRODED	20160421005	QUE
CL600 2C10 (RJ700)	2100	AIR CYCLE MACHINE	GC670950095	FAILED	20160817023	QUE
CL600 2C10 (RJ700)	2100	AIR CYCLE MACHINE	GG670950095	FAILED	20160815008	QUE
CL600 2C10 (RJ700)	2100	AIR CYCLE MACHINE	GG670950095	FAILED	20160819006	QUE
CL600 2C10 (RJ700)	2497	INTEGRATED DRIVE GENERATOR CABLE	SH67059232005	CHAFED	20160721044	QUE
CL600 2C10 (RJ700)	3220	STEERING COLLAR & PISTONLEG	521073	CORRODED	20160721040	QUE
CL600 2C10 (RJ700)	5210	AFT ANGLE SUPPORT	601R3187323	CRACKED	20160729024	QUE
CL600 2C10 (RJ700)	5240	STOP FITTINGS	601R384042	CORROSION	20160704010	QUE
CL600 2C10 (RJ700)	5310	FRAME	SH670320365	CRACKED	20160907006	QUE
CL600 2C10 (RJ700)	5311	BELLY SKIN FRAME	SH670313551	CORROSION	20160705011	QUE
CL600 2C10 (RJ700)	5311	LOWER FRAME SECTOR	SH670370653	CORRODED	20160928022	QUE
CL600 2C10 (RJ700)	5312	CAP ANGLE	SH670358811	CORRODED	20160715003	QUE
CL600 2C10 (RJ700)	5315	FLOOR BEAM ASSEMBLY	MM67035301001	CORRODED	20160928021	QUE
CL600 2C10 (RJ700)	5532	DRAG ANGLE	AV67021186003004	CRACKED	20160922008	QUE
CL600 2C10 (RJ700)	5610	CAPTAIN SIDE WINDOW	NP139322XX	CRACKED	20160803009	QUE
CL600 2C10 (RJ700)	5610	RIGHT-HAND WINDOW	NP139322	CRACKED	20160812007	QUE
CL600 2C10 (RJ700)	5610	WINDSHIELD	NP13932113	CRACKED	20160923006	QUE
CL600 2C10 (RJ700)	5755	HOSE ASSEMBLY	AS11587220487220	BLOWN OUT	20160912013	QUE
CL600 2C10 (RJ700)	7120	ENGINE YOKE MOUNT	BA670370153	CORRODED	20160721025	QUE
CL600 2C10 (RJ700)	7830	THRUST REVERSER RELAY	K30	FAILED	20160817022	QUE

Make/Model	Jasc	Part Name	Part Number	Part Condition	SDR No.	RGN
CL600 2C10 (RJ701)	7500	RETAINER COUPLING	NM102422H0300	LOOSE	20160628014	QUE
CL600 2C10 (RJ701)	2780	SPOILER & STABILIZER CONTROL UNIT	C13045BA	WET	20160909019	QUE
CL600 2C10 (RJ702)	5610	CAPTAIN WINDSHIELD	NP139321	CRACKED	20160621009	QUE
CL600 2C10 (RJ702)	5610	RIGHT-HAND WINDSHIELD	NP139321	CRACKED	20160704013	QUE
CL600 2D15 (705)	7230	VARIABLE GEOMETRY MASTER	4120T02P03	LEAKING	20160624009	ATL
CL600 2D15 (705)	2751	FLAP SYSTEM		FAIL MESSAGE	20160819009	QUE
CL600 2D15 (705)	2752	FLAP ACTUATOR	766361C	INTERMITTENT JAM	20160825006	ATL
CL600 2D15 (705)	5610	WINDSHIELD (RIGHT-HAND FORWARD)	601R3303322	CRACKED	20160919013	ATL
CL600 2D24 (RJ900)	1430	BOLTS	NAS1580V4T14	SHEARED	20160512012	QUE
CL600 2D24 (RJ900)	1430	BOLTS	NAS1580V4T14	SHEARED	20160517007	QUE
CL600 2D24 (RJ900)	1430	BOLTS	NAS1580V4T14	SHEARED	20160517008	QUE
CL600 2D24 (RJ900)	2100	AIR CYCLE MACHINE	GG67095009	FAILED	20160411007	QUE
CL600 2D24 (RJ900)	2200	RESISTOR	FRJ50R36	DEFECTIVE	20160623008	QUE
CL600 2D24 (RJ900)	2400	INTEGRATED DRIVE GENERATOR CABLES	SH67059232005	BURNT	20160602006	QUE
CL600 2D24 (RJ900)	3210	SLEEVE ANTI-ROTATION	492301	BROKEN	20160410001	PNR
CL600 2D24 (RJ900)	3213	AXLE	492037	CORROSION	20160531010	QUE
CL600 2D24 (RJ900)	3234	LANDING GEAR LEVER	533443	UNSERVICEABLE	20160408006	PNR
CL600 2D24 (RJ900)	3610	BLEED CROSSOVER DUCT	9912007101	LEAKING	20160601009	QUE
CL600 2D24 (RJ900)	3610	CROSSOVER DUCT	9912007101	LEAKING	20160405004	QUE
CL600 2D24 (RJ900)	5311	FRAME SECTOR	CC670341462	CRACKED	20160503003	QUE
CL600 2D24 (RJ900)	5313	STRINGER	SH690370685	CORRODED	20160520007	QUE
CL600 2D24 (RJ900)	5330	SKIN	MM69035146009	CORRODED	20160428007	QUE
CL600 2D24 (RJ900)	5330	SKIN	MM69035146005	CORRODED	20160609005	QUE
CL600 2D24 (RJ900)	5610	WINDSHIELD	NP139321	CRACKED	20160419005	QUE
CL600 2D24 (RJ900)	1497	HARNESS ASSEMBLY	A327725P5205	CHAFED	20160921007	QUE
CL600 2D24 (RJ900)	2100	AIR CYCLE MACHINE	GG67095009X	SEIZED	20160816002	QUE
CL600 2D24 (RJ900)	2130	CABIN PRESSURE CONTROLLER	GG67098002	FAILED	20160706008	QUE
CL600 2D24 (RJ900)	3246	WHEEL ASSEMBLY	900012001	CRACKED	20160909013	QUE
CL600 2D24 (RJ900)	3246	WHEEL SPEED TRANSDUCER	6007047	NOT ROTATING	20160704014	QUE
CL600 2D24 (RJ900)	3260	GEAR DOWN INDICATION	NOTSPECIFIED	NOT CORRECT	20160704011	QUE
CL600 2D24 (RJ900)	5210	BOTTOM STEP ASSEMBLY	601R3170767	CORRODED	20160830013	QUE
CL600 2D24 (RJ900)	5244	DOOR LANDING	CC67039226	CRACKED	20160712010	QUE
CL600 2D24 (RJ900)	5310	FUSELAGE	SH67036125	SHEARED FASTENER	20160920021	QUE
CL600 2D24 (RJ900)	5310	FORWARD STIFFENER	CC670341643	CRACKED	20160830017	QUE
CL600 2D24 (RJ900)	5347	SEAT RAIL	SH690362582	CORROSION	20160817017	QUE
CL600 2D24 (RJ900)	5610	LEFT-HAND COCKPIT WINDOW	NP139322	CRACKED	20160705019	QUE
CL600 2D24 (RJ900)	5610	WINDSHIELD	NP139321	CRACKED	20160817019	QUE
CL600 2D24 (RJ900)	5610	WINDSHIELD	NP139321X	CRACKED	20160819010	QUE
CL600 2D24 (RJ900)	7230	ENGINE COMPRESSOR		WASH RESIDUE	20160919007	QUE
CL600 2D24 (RJ900)	7500	BLEED DUCT SEAL		LEAKING	20160829022	QUE
CL600 2D24 (RJ900)	7540	SENSING ELEMENT	0431102A112	DAMAGED	20160725003	QUE
CL600 2E25 (RJ1000)	2100	AIR CYCLE MACHINE	3478A010001	SEIZED	20160606006	QUE
CL600 2E25 (RJ1000)	2120	AIR CYCLE MACHINE	3478A010001	SEIZED	20160513004	QUE
CL600 2E25 (RJ1000)	3400	PRIMARY FLIGHT DISPLAY	6229810306	FAILED	20160407003	QUE
CL600 2E25 (RJ1000)	5500	HORIZONTAL STABILIZER	AV67021010001	CORRODED	20160531006	QUE
CL600 2E25 (RJ1000)	2520	SAFETY HARNESS	4048101180002390	FRAYED	20160912016	QUE
CL600 2E25 (RJ1000)	2910	HOSE	AE7178121	LOOSE AND WORN	20160923004	QUE
CL600 2E25 (RJ1000)	3260	AFT DOOR DRIVE BRACKET	52170	LOOSE	20160713016	QUE

CANADAIR

Make/Model	Jasc	Part Name	Part Number	Part Condition	SDR No.	RGN
CL215 1A10	2400	GENERATOR	2CM63C7	INTERNAL FAILURE	20160504001	PNR
CL215 1A10	8500	ENGINE	R2800CA3	FAILED	20160705017	QUE
CL215 1A10	8500	LEFT ENGINE	21562010	LOST POWER	20160705018	QUE
CL215 6B11(CL215T)	2613	CONTROL FIRE DETECTOR	37702836	MALFUNCTIONNED	20160530005	PAC
CL215 6B11(CL215T)	2822	BOOST PUMP	215T640952	FAILED	20160818004	PAC
CL215 6B11(CL215T)	2920	HYDRAULIC HOSE	AE2463509EO180	BROKEN	20160721039	QUE
CL215 6B11(CL215T)	5753	WING FLAP	21514000884	USED	20160915031	QUE
CL215 6B11(CL415)	2200	AUTO PILOT	K126221021	DEFECTIVE	20160414010	QUE
CL215 6B11(CL415)	5280	NOSE LANDING GEAR DOOR	215330011002	DAMAGED	20160607005	QUE
CL215 6B11(CL415)	5310	RIGHT-HAND TOP FRAME SEGMENT	21531061	CRACKED	20160405002	QUE
CL215 6B11(CL415)	1410	HYDRAULIC HOSE	AE2460500E0260	BROKEN	20160729001	QUE
CL215 6B11(CL415)	2432	BATTERY CELLS	40SP100	WARPED	20160926010	ATL
CL215 6B11(CL415)	3230	MAIN LANDING GEAR FOLDING STRUT RIGHT- HAND	21587501103	OVERHAULED	20160802010	QUE
CL215 6B11(CL415)	4130	MICRO SWITCH	21HE96	UNSERVICEABLE	20160718001	ATL
CL600 2A12(601)	3244	TIRE	256K433	TREAD PEELED	20160606002	NCR
CL600 2B16(601 3A)	3244	TIRE	256K433	FAILED	20160419011	QUE
CL600 2B16(601 3A)	3244	TIRE	256K433	SHREDDED	20160926007	QUE
CL600 2B16(601 3R)	3244	TIRE	256K433	FAILED	20160503009	QUE
CL600 2B16(601 3R)	3246	BOLT	GY22623	MISSING	20160704001	QUE
CL600 2B16(604)	0	MICROWAVE	400133802RN	FAILED	20160608003	QUE
CL600 2B16(604)	1497	CIRCUIT BREAKERS	MS3320712	UNDER TORQUED	20160511006	QUE
CL600 2B16(604)	2120	CONDITIONED AIR DUCT	601950129	WRONG INSTALL	20160405009	PAC
CL600 2B16(604)	2200	AUTOFLIGHT SYSTEM	8221581003	FAULTY RESISTOR	20160610006	QUE
CL600 2B16(604)	2216	TRIM SERVO	6225027001	CRACKED	20160422010	PAC
CL600 2B16(604)	2613	HEAT SENSE ELEMENT	356024310	CHAFED	20160621006	ONT
CL600 2B16(604)	5730	RIGHT-HAND LOWER WING		CORROSION	20160422009	PAC

CESSNA

Make/Model	Jasc	Part Name	Part Number	Part Condition	SDR No.	RGN
150L	5500	REINFORCEMENT	43200115	CRACKED	20160817020	ONT
150L	5511	SPAR STABILIZER	43200156	UNSERVICEABLE	20160717002	ONT
150M	5343	SUPPORT MAIN LANDING GEAR	44120412	CRACKED	20160817024	ONT
150M	5511	SPAR STABILIZER	43200156	UNSERVICEABLE	20160717003	ONT
150M	5521	SPAR - ELEVATOR	43200121	CORROSION	20160829009	ONT
150M	5522	SKIN - ELEVATOR RIGHT- HAND	43200122	CORROSION	20160829008	ONT
150M	5541	SKIN	4330106	CRACKED	20160829002	ONT
150M	5541	SKIN	4330106	CRACKED	20160829004	ONT
172K	2510	PILOT SEAT	51500120	USAGE	20160719006	QUE
172L	3220	CAP BOLT	AN510A	MISSING	20160509011	QUE
172M	3245	TUBE	600X6	HOLE IN TUBE	20160912005	ONT
172M	5544	UPPER RUDDER HINGE ON STABILIZER	5311033	CRACKED	20160914018	PNR

Make/Model	Jasc	Part Name	Part Number	Part Condition	SDR No.	RGN
172N	2421	MAIN POWER WIRE		BURNT	20160519007	PNR
172N	2750	BUSHING	523919	MISSING	20160610007	PNR
172N	3245	TUBE	600X6	HOLE IN TUBE	20160912006	ONT
172N	7160	ARM ASSEMBLY - CONTROL	55018016	WORN	20160829012	ONT
172N	8000	MASTER CONTACTOR	519911A	STUCK ON	20160803012	PNR
172N	8000	MASTER CONTACTOR	51980A1	OPEN	20160831011	PNR
172P	2500	CABLE ASSEMBLY	505530405	NEW	20160408012	PNR
172P	7160	VALVE ASSEMBLY	5521696	LOOSE	20160429004	PNR
172S	2421	ALTERNATOR B LEAD		CRACKED	20160425011	PNR
172S	3243	PISTON SHAFT	98820125	BROKEN	20160518001	ATL
172S	2397	CONNECTOR	AUTOMOTIVESTYLE	INTERMITTENT	20160907004	ATL
180C	5313	STRINGER ASSEMBLY	7130078	CRACKED	20160527021	ONT
180J	2731	BUSHING	411491	WORN	20160520013	PAC
182H	5310	BULKHEAD	7126161	CRACKED	20160602012	ONT
182P	2000	CARB AIR BOX	75014433	NEW	20160927013	PNR
207A	5510	FITTING	12320131	BROKEN	20160628008	PNR
208	0	BOLT	AN647A	BENT	20160831012	PAC
208	3230	TROLLEY BLOCK	6A7603001	WORN/DEFORMED	20160708002	ONT
208B	3243	RETURN SPRING	541148	COMPRESSED	20160616006	PNR
208B	6140	PROP RPM INDICATOR	26060142	UNSERVICABLE	20160524024	PNR
208B	7800	EXHAUST DEFLECTOR	1006039	CRACKED	20160627003	ATL
208B	5210	SUPPORT BRACKET	2617065	BROKEN	20160923005	PNR
208B	7810	SECONDARY EXHAUST DUCT	4654008205	CRACKED	20160721019	ATL
305A	5534	FITTING	631124	CRACKED	20160506006	QUE
337E	7600	THROTTLE CABLE ASSEMBLY FORWARD	513919	WORN	20160606007	PNR
525B	2131	PRESSURIZATION CONTROLLER	52811103	FAILED	20160818011	PNR
560(ENCORE)	2751	CABLE ASSEMBLY	65651201	BROKEN	20160515001	PNR
560(ENCORE)	5210	DOOR SEAL	R58194	NEW	20160404011	PAC
A185E	5711	SPAR ANGLE	122210523	CORRODED	20160503007	PAC
A185F	5544	BRACKET ASSEMBLY	7120391	CRACKED	20160421004	PAC
R182	7930	LINE	70009937	CORRODED	20160422002	QUE
R182	7160	AIRBOX	22500161	USED	20160811004	PNR
T210L	3220	TORQUE LINK	12434262	CRACKED	20160719010	PAC
U206F	7160	SPRING	12503101	BROKEN	20160906011	ONT
U206G	2750	FLAP ACTUATOR MOTOR	C3010020104	FAILED	20160923007	PNR
U206G	3250	ROD END	12606311	BROKEN	20160922006	PNR

CIRRUS

Make/Model	Jasc	Part Name	Part Number	Part Condition	SDR No.	RGN
SR22	0	CYLINDER	658595A2BP	CRACKED	20160628010	NCR

CONVAIR - CAN

Make/Model	Jasc	Part Name	Part Number	Part Condition	SDR No.	RGN
340	3242	DISC BRAKE	9531478	UNSERVICABLE	20160513007	PAC
340	0	FIRE WIRE	356080765	UNSERVICABLE	20160812011	PAC
340	2423	PHASE ADAPTER		UNSERVICABLE	20160722006	PAC
340	2913	ENGINE HYDRAULIC PUMP	66WH4001	FAILURE	20160805008	PAC
340	3230	GEAR DOWN RELAY	237EAU	INSPECTED	20160920016	PAC
440	2822	FUEL PRESSURE SWITCH	42G88	USED	20160705012	PAC

DASSAULT

Make/Model	Jasc	Part Name	Part Number	Part Condition	SDR No.	RGN
FALCON 2000EX	2913	SEAL	30C418601	WORN	20160505011	PAC
FALCON 7X	2910	HYDRAULIC LINE	F7XC294551175	CHAFED	20160929003	PAC
MYSTERE FALCON 50	5320	KARMAN FAIRING	F50B281023A1	CRACKED	20160923001	QUE

DEHAVILLAND - CAN

Make/Model	Jasc	Part Name	Part Number	Part Condition	SDR No.	RGN
DHC 2 MKI	2710	BALANCE ARM ASSEMBLY	C2WA159AND	CORRODED	20160621004	PAC
DHC 2 MKI	2720	WATER RUDDER TILLER ARM	58W029RL	CORRODED	20160401015	PAC
DHC 2 MKI	2730	ELEVATOR CONTROL	C2CF813A	FRAYED	20160505007	ONT
DHC 2 MKI	2730	FORWARD SPAR	C2TE141ND	CRACKED	20160614007	ONT
DHC 2 MKI	2800	SCOOP ASSEMBLY	C2P1587A	MISSING	20160408015	PAC
DHC 2 MKI	2823	SELECTOR VALVE		FRAYED	20160505008	ONT
DHC 2 MKI	5521	FORWARD SPAR	C2TE141ND	CRACKED	20160511003	ONT
DHC 2 MKI	2730	BOLT/BUSHING	AN36C2CF349ND	WORN	20160706010	PAC
DHC 2 MKI	3246	UPPER FITTING	VALBVS12601	CORRODED/CRACKED	20160718008	PAC
DHC 2 MKI	5533	BOLT	NAS147ADH26	UNAPPROVED	20160915033	PAC
DHC 2 MKIII	5741	FITTING ASSEMBLY	VALBVS12091R	CORRODED	20160502011	PAC
DHC 3	2710	AILERON CABLE	TBC3CF2055	BROKEN STRANDS	20160623003	ONT
DHC 3	2742	BARREL - TAILPLANE ACTUATOR	C3CF2703	CRACKED	20160511008	PNR
DHC 3	5720	WIRE LUG BRACE	J78162	CRACKED	20160729025	PNR
DHC 6	2750	ROD ASSEMBLY - FLAP	C6CW10831	NEW	20160823015	PAC
DHC 6	3213	AXLE	C6US101527	NEW	20160825012	PAC
DHC 6 300	3250	STEERING COLLAR	71177	USED	20160420003	PAC
DHC 6 300	5210	HANDLE ASSEMBLY	VSC25584F	BROKEN	20160627013	ONT
DHC 6 300	2710	ANCHOR NUT	NAS696A4	USED	20160721046	PAC
DHC 6 300	2720	RUDDER CONTROL CABLE	NAS305344201	USED	20160803011	PAC
DHC 6 300	2730	ANCHOR NUT	NAS696A4	USED	20160721045	PAC
DHC 6 300	2750	FLAP ROD	C6CW10831	USED	20160928025	PAC
DHC 8 102	2760	SPOILER ACTUATOR	A44700009	CRACKED	20160404003	ONT
DHC 8 102	3220	HYDRAULIC FLEX LINE	DSC252B40124	CRACKED	20160601013	ATL
DHC 8 102	5310	FUSELAGE FRAMES	85320534	CRACKED	20160408003	QUE
DHC 8 102	5330	AIRCRAFT SKIN PANEL	85330022	DAMAGED	20160411003	ATL
DHC 8 102	6120	MICROSWITCH	6121S11	FAULTY	20160428001	ATL
DHC 8 102	2720	RUDDER ISOLATION VALVE	997305	REPAIRED	20160720005	ONT
DHC 8 102	2721	KNOB	BP247134	STICKING	20160913001	ATL
DHC 8 103	7697	MICRO SWITCH	JV5	FAILED	20160808006	ONT
DHC 8 106	2422	INVERTER	DH103024600CS	SMOKING	20160822025	PNR
DHC 8 106	2611	SMOKE DETECTOR	473054	UNSERVICEABLE	20160830020	PNR
DHC 8 106	2915	RELIEF VALVE	3811208102	LEAKING	20160831009	PNR

Make/Model	Jasc	Part Name	Part Number	Part Condition	SDR No.	RGN
DHC 8 106	5497	CABLE SUPPORT	83210322001	CRACKED	20160913003	ONT
DHC 8 106	7921	OIL COOLER	28E998	LEAKING	20160804002	ATL
DHC 8 106	7930	OIL PRESSURE INDICATOR		FAULTY	20160830018	PAC
DHC 8 201	7800	UPPER SHROUD SKIN	87800040	CRACKED	20160607003	QUE
DHC 8 201	2761	SPOILER ACTUATOR		FAILED	20160902009	PNR
DHC 8 201	3260	NOSE LANDING GEAR LOCK SENSOR		DAMAGED	20160705002	QUE
DHC 8 202	3230	HYDRAULIC FLEX LINE	DSC252B40124	LEAKING	20160608001	QUE
DHC 8 202	3230	NOSE LANDING GEAR LOCK ACTUATOR	8400	FAULTY	20160926002	QUE
DHC 8 301	7500	GASKET		BLOWN	20160531003	PNR
DHC 8 301	7500	SHROUD PIPE		DAMAGED	20160525008	ATL
DHC 8 301	2910	HYDRAULIC LINE	8Z0080179	LEAKING	20160802013	ATL
DHC 8 301	5230	CASTING		CRACKED	20160816010	PNR
DHC 8 301	5310	FITTING		CRACKED	20160912008	ATL
DHC 8 301	7697	MICRO SWITCH		FAULTY	20160721034	ONT
DHC 8 311	2150	HOUSING		CRACKED	20160718007	PNR
DHC 8 311	2400	RELAY 3041-K6	KCD4N	DAMAGED	20160729010	QUE
DHC 8 311	2710	RUBBER SEAL		FAILED	20160718004	PNR
DHC 8 311	2900	HYDRAULIC LINE	82920010311	LEAKING	20160819001	QUE
DHC 8 311	2900	SPOILER POWER UNIT STANDBY	849557	FAILED	20160926015	PAC
DHC 8 311	2910	VALVE		CRACKED	20160916008	PNR
DHC 8 311	3320	LAMP HOLDER	BVO33000220	BURNT	20160922004	ATL
DHC 8 311	7697	MICRO SWITCH		MALFUNCTION	20160721033	ONT
DHC 8 314	3242	FITTING REDUCER	27417	CRACKED	20160601011	QUE
DHC 8 314	2500	PASSENGER ADDRESS ELECTRONICS UNIT	526411	FAULTY	20160802014	QUE
DHC 8 314	2565	DAM COVER		WRONG SIZE	20160815003	QUE
DHC 8 314	3233	BEARING	83271	CRACK	20160908007	QUE
DHC 8 314	7397	CANON PLUG		CORRODED	20160928023	QUE
DHC 8 315	2130	CABIN PRESSURE CONTROLLER	21178041	INTERNAL FAILURE	20160429002	QUE
DHC 8 315	2841	FUEL FLOAT SWITCH	F75985	UNSERVICEABLE	20160414012	PNR
DHC 8 315	3222	NOSE LANDING GEAR	8200	CRACKED	20160705001	QUE
DHC 8 315	3233	CYLINDER	83191	FALSE CUT	20160916001	QUE
DHC 8 315	3260	PROXIMITY SENSOR ELECTRONIC UNIT	858601	FAULTY	20160721032	QUE
DHC 8 400	2730	CONNECTOR		DIRT/MOISTURE	20160614001	QUE
DHC 8 400	2841	FUEL PROBE	28069008	FAULTY	20160527001	QUE
DHC 8 400	2913	ENGINE DRIVEN PUMP	6617304	DAMAGE	20160628009	QUE
DHC 8 400	2913	ENGINE DRIVEN PUMP	6617304	FAILED/LEAKING	20160519004	QUE
DHC 8 400	2915	BALANCE RELIEF VALVE	9752565	LEAKING	20160502001	QUE
DHC 8 400	3230	HYDRAULIC HOSE		FAILED	20160415005	QUE
DHC 8 400	3230	HYDRAULIC LINE	82974219005	LEAKING	20160609003	QUE
DHC 8 400	3230	NOSE LANDING GEAR DOOR TOGGLE LINK	4784882083	WORN BUSHING	20160615027	QUE

Make/Model	Jasc	Part Name	Part Number	Part Condition	SDR No.	RGN
DHC 8 400	3231	RIGHT-HAND MAIN LANDING GEAR		ADJUSTED	20160413021	QUE
DHC 8 400	3231	RIGHT-HAND MAIN LANDING GEAR DOOR	483025	FAULTY	20160621001	QUE
DHC 8 400	3232	NOSE LANDING GEAR DOOR ACTUATOR	478301	LEAKING INTERNAL	20160502005	QUE
DHC 8 400	3244	MAIN LANDING GEAR WHEEL	4151171	TIRE FAILURE	20160413019	QUE
DHC 8 400	3244	TIRE	DR0231T	BURST	20160629017	QUE
DHC 8 400	3244	TIRE ASSEMBLY	DR0231T	RE-TREAD	20160516005	ONT
DHC 8 400	3244	TIRE ASSEMBLY	DR0231T	RE-TREAD	20160517010	ONT
DHC 8 400	3246	MAIN WHEEL	315731	BEARING FAILURE	20160502009	QUE
DHC 8 400	3246	NOSA WHEEL BEARING		FAILED	20160627005	QUE
DHC 8 400	3250	ROTARY VARIABLE DIFFERENTIAL TRANSDUCER		ADJUSTED	20160627008	QUE
DHC 8 400	3297	NOSE LANDING GEAR DOOR	483025	FAULTY	20160615026	QUE
DHC 8 400	5230	AFT BAGGAGE DOOR SEAL	5022131	DAMAGED	20160411001	QUE
DHC 8 400	5230	DOOR SEAL CONTROL VALVE	4100503101	STUCK	20160512005	QUE
DHC 8 400	5230	DOOR WARNING		ADJUSTED	20160531001	QUE
DHC 8 400	6120	OVERSPEED GOVERNOR		FAULTY	20160405006	ONT
DHC 8 400	7800	EXHAUST		MISALIGNMENT	20160520003	ONT
DHC 8 400	2710	CABLE	82742412001	BROKEN	20160728018	QUE
DHC 8 400	2913	ENGINE DRIVEN PUMP	6617304	FAILED	20160714019	QUE
DHC 8 400	2913	ENGINE DRIVEN PUMP	6617304	FAILED	20160715001	QUE
DHC 8 400	2913	ENGINE DRIVEN PUMP	6617304	FAILED	20160818006	QUE
DHC 8 400	2913	ENGINE DRIVEN PUMP	66713004	FAILED	20160729017	QUE
DHC 8 400	2913	ENGINE DRIVEN PUMP	6617304	FAILED/LEAKING	20160712002	QUE
DHC 8 400	2913	ENGINE DRIVEN PUMP	6617304	LEAKING	20160822008	QUE
DHC 8 400	2913	ENGINE DRIVEN PUMP	6671304	LEAKING AT CASE	20160907009	ONT
DHC 8 400	2913	ENGINE DRIVEN PUMP	6617304	LEAKING/OVERHEAT	20160829015	ONT
DHC 8 400	3220	NOSE LANDING GEAR DRAG STRUT	473009	BROKEN PIN	20160919001	QUE
DHC 8 400	3220	NOSE LANDING GEAR LOCK ACT HOSE	AE128852	FAILED	20160704008	QUE
DHC 8 400	3230	BYPASS VALVE	6131001001	STICKING	20160923012	QUE
DHC 8 400	3230	FLEX HOSE	AE7202911	FAILED/LEAKING	20160808003	QUE
DHC 8 400	3230	FORWARD MAIN LANDING GEAR DOOR	4686011	ASSY DETACHED	20160902006	QUE
DHC 8 400	3230	GEAR SELECTOR		FAULTY	20160816001	QUE
DHC 8 400	3230	GEAR UP FLEX LINE	46455123	FAILED	20160729016	QUE
DHC 8 400	3230	HARNESS		WET	20160824006	QUE
DHC 8 400	3230	HYDRAULIC FLEX LINE	46455123	FAILED	20160808005	QUE
DHC 8 400	3230	MAIN LANDING GEAR FELX HOSE	46455123	LEAKING	20160818009	QUE
DHC 8 400	3230	MAIN LANDING GEAR FLEX HOSE	46455123	FAILED	20160912002	ONT
DHC 8 400	3230	NOSE LANDING GEAR LOCK ACTUATOR FLEX HOSE	AE7128852	LEAKING	20160720004	QUE

Make/Model	Jasc	Part Name	Part Number	Part Condition	SDR No.	RGN
DHC 8 400	3230	NOSE LANDING GEAR LOCK ACTUATOR	47400	HYD BYPASS	20160923008	QUE
DHC 8 400	3230	NOSE LANDING GEAR VALVE	483037	FAULTY	20160824007	QUE
DHC 8 400	3230	NOSE LANDING GEAR VALVE	483037	FAULTY	20160824002	QUE
DHC 8 400	3230	RETRACTION FLEX LINE	46455123	LEAKING	20160808004	QUE
DHC 8 400	3230	SOLENOID VALVE	483025	FAULTY	20160923011	QUE
DHC 8 400	3231	VALVE	483025	FAILED	20160719002	QUE
DHC 8 400	3232	NOSE LANDING GEAR DOOR ACTUATOR	47830	FAULTY	20160708006	QUE
DHC 8 400	3232	NOSE LANDING GEAR DOOR ACTUATOR	478301	INTERNAL LEAKAGE	20160824005	QUE
DHC 8 400	3244	MAIN TIRE		TREAD FAILURE	20160801001	QUE
DHC 8 400	3244	MAIN LANDING GEAR TIRE		TREAD SEPARATION	20160805001	QUE
DHC 8 400	3244	MAIN LANDING GEAR TIRE	315731	TREAD SEPARATION	20160830015	QUE
DHC 8 400	3244	MAIN LANDING GEAR WHEEL ASSEMBLY	315731	TIRE BURST	20160830016	QUE
DHC 8 400	3246	MAIN WHEEL ASSEMBLY	315731	INBD BEARNG FAIL	20160902003	QUE
DHC 8 400	3246	MIAN WHEEL	315731	INBD BEARING FAI	20160908011	QUE
DHC 8 400	3250	NOSE WHEEL STEERING		FAULTY	20160815002	QUE
DHC 8 400	3250	NOSE WHEEL STEERING		RIGGING	20160926004	QUE
DHC 8 400	3260	PROXIMITY SENSOR		OPEN	20160916003	QUE
DHC 8 400	3297	HARNES		FAULTY	20160915023	QUE
DHC 8 400	5210	BRACKET		FAULING	20160722003	QUE
DHC 8 400	5210	BRACKET		FAULING	20160722004	QUE
DHC 8 400	5210	BRACKET	8Z7911069071	FOULING	20160718005	QUE
DHC 8 400	5210	DESICCANT FILTER		FILLED WITH WATE	20160920014	QUE
DHC 8 400	5210	DOOR SEAL		INOP	20160809003	QUE
DHC 8 400	6120	PROPELLER CONTROL		FAULTY	20160914015	ONT
DHC 8 401	5415	NACELLE PIN	85414566107	CORROSION	20160921008	QUE
DHC 8 401	7110	FORWARD COWL	87144002	PARTIALLY MISSIN	20160926009	QUE
DHC 8 402	2100	CHECK VALVE		BROKEN	20160620004	ATL
DHC 8 402	2100	REHEATER INLET DUCT	8215531	CRACKED	20160531008	ATL
DHC 8 402	2130	AFT OUTFLOW VALVE	88060B010103	NOISY	20160527020	QUE
DHC 8 402	2131	CABIN PRESSURE CONTROLLER	92146A010401	SUSPECT	20160524020	PNR
DHC 8 402	2133	AFT OUTFLOW VALVE		MALFUNCTIONING	20160614019	QUE
DHC 8 402	2161	REHEATER INLET DUCT	8215531	RUPTURED	20160527008	ATL
DHC 8 402	2420	ALTERNATING CURRENT (AC) GENERATOR		FAULTY	20160404001	ATL
DHC 8 402	2420	AC GENERATOR		FAULTY	20160530002	ONT
DHC 8 402	2421	CONNECTOR		BURNT	20160509017	ATL
DHC 8 402	2430	SHAFT FRICTION RING	150SG1070	DISINTEGRATED	20160425006	ATL
DHC 8 402	2431	TEMPERATURE SENSOR HARNES	26317000	UNSERVICEABLE	20160510004	ATL
DHC 8 402	2435	FRICTION RING	150SG1070	DAMAGED	20160408013	ATL
DHC 8 402	2520	FLOOR FITTING	96620551	CORROSION CRACK	20160608007	QUE
DHC 8 402	2550	CHANNEL	9512119521	WORN	20160418007	ATL

Make/Model	Jasc	Part Name	Part Number	Part Condition	SDR No.	RGN
DHC 8 402	2550	FITTING	CDSP1904503	SPLIT	20160418004	ATL
DHC 8 402	2710	CABLE		WORN	20160411006	ONT
DHC 8 402	2710	PLATE ASSEMBLY	82710152003	WORN	20160502004	ATL
DHC 8 402	2710	ROLL ACTUATOR	C18117AA	ENGAGED	20160523008	PNR
DHC 8 402	2720	LOCK NUT	MS210423	SPLIT	20160607002	ATL
DHC 8 402	2730	ANGLE OF ATTACK VANE		BURNT	20160530006	ATL
DHC 8 402	2750	FLAP POSITION TRANSDUCER	C1486651	ERRATIC	20160406005	PNR
DHC 8 402	2810	CLAMP	MS21919WDF6	CRACKED	20160524026	ATL
DHC 8 402	2824	SHUT OFF CONTROL LEVEL VALVE	2960005101	DEBRIS	20160503011	ATL
DHC 8 402	2900	O-RING	NAS6128A	DAMAGED	20160412009	PNR
DHC 8 402	2911	HYDRAULIC PUMP	6617304	LEAKING	20160530008	PNR
DHC 8 402	2997	WIRE		SHORTED	20160527006	PNR
DHC 8 402	3010	DE-ICE BOOT		DELAMINATED	20160407008	ONT
DHC 8 402	3010	DE-ICE BOOT		DELAMINATED	20160411004	ONT
DHC 8 402	3010	DE-ICE BOOT	51SP162522	RUPTURED	20160502006	QUE
DHC 8 402	3020	ENGINE INTAKE ADAPTER HEATER	4100S02805	BURNT	20160426026	ONT
DHC 8 402	3060	CONNECTOR PLUG	MS3459L2410S	DAMAGED PINS	20160613001	PNR
DHC 8 402	3213	MAIN LANDING GEAR DRAG STRUT ASSEMBLY	46301	CORROSION	20160412008	QUE
DHC 8 402	3220	ACTUATOR ASSEMBLY NOSE LANDING GEAR DOOR	478301	SUSPECT	20160518005	PNR
DHC 8 402	3230	PROXIMITY SENSOR		ADJUSTMENT	20160407004	ONT
DHC 8 402	3230	SOLENOID SEQUENCE VALVE	483025	INTERMITTENT	20160419013	PNR
DHC 8 402	3231	PROXIMITY SENSOR ELECTRONIC UNIT		FAULTY	20160413025	ONT
DHC 8 402	3231	SENSOR HARNESS		FAULTY	20160413026	ONT
DHC 8 402	3231	SEQUENCE VALVE	483025	FAULTY	20160616004	QUE
DHC 8 402	3242	FLEX HOSE	115503005	RUPTURED	20160421002	ONT
DHC 8 402	3242	PULLEY	MS202194	PIECE MISSING	20160602010	ATL
DHC 8 402	3244	TIRE	DR0231T	GROOVE CRACKING	20160518003	ATL
DHC 8 402	3246	GREASE SEAL	39188	DAMAGED	20160404010	PNR
DHC 8 402	3250	RIGHT-HAND MAIN LANDING GEAR	8632100002	FAIL TO RETRACT	20160509009	ONT
DHC 8 402	3260	SENSOR		RIGGING	20160610003	ONT
DHC 8 402	3297	CONTACT	M3902956348	LOOSE PINS	20160531011	QUE
DHC 8 402	3414	AIRSPEED INDICATOR	FLUCTUATING		20160407002	ONT
DHC 8 402	3610	VALVE		FAULTY	20160411005	ONT
DHC 8 402	5210	AIR STAIR DOOR SEAL		CONTAMINATED	20160620014	QUE
DHC 8 402	5210	DOOR SEAL FILTER	85C5028003	LEAKING	20160425005	ATL
DHC 8 402	5210	DOOR STOP ASSEMBLY	85217035004	DAMAGED	20160620013	PNR
DHC 8 402	5210	PASSENGER DOOR LAY SHAFT	85217049051	UNSERVICEABLE	20160427003	ATL
DHC 8 402	5230	BOLT	NAS62043	SHEARED	20160613015	PNR
DHC 8 402	5240	FRAME X697 6	85339232103	CORROSION	20160511005	QUE

Make/Model	Jasc	Part Name	Part Number	Part Condition	SDR No.	RGN
DHC 8 402	5312	PRESSURE BULKHEAD		DAMAGED	20160510002	QUE
DHC 8 402	5320	CHANNEL	9512119521	WORN	20160406004	ATL
DHC 8 402	5400	LOCKBOLT COLLAR	B02060618	CRACKED	20160511004	QUE
DHC 8 402	5414	NACELLE SKIN	85414690	CORROSION	20160407001	QUE
DHC 8 402	5610	WINDSHIELD		CRACKED	20160510003	ATL
DHC 8 402	6120	INPUT/OUTPUT MODULE		RESET	20160427006	ONT
DHC 8 402	7921	BYPASS VALVE	D2887955C	CHAFED	20160415009	PNR
DHC 8 402	7921	OIL COOLER ACTUATOR		FAILED	20160627006	ONT
DHC 8 402	7921	VALVE SLEEVE	D2887156C	OVERSIZED	20160518007	PNR
DHC 8 402	2130	OUTFLOW VALVE		FAULTY	20160923019	QUE
DHC 8 402	2131	CABIN PRESSURE CONTROL PANEL		FAULT LIGHT ON	20160706005	QUE
DHC 8 402	2131	CABIN PRESSURE CONTROLLER	92146A010401	FAILED	20160818002	PNR
DHC 8 402	2133	OUTFLOW VALVE		FAULTY	20160713017	QUE
DHC 8 402	2150	PACK FLOW CONTROL VALVE	9209026	FAULTY	20160928014	QUE
DHC 8 402	2400	CONNECTOR PLUG	MS3459L2411P	DAMAGED PINS	20160920013	PNR
DHC 8 402	2435	STARTER GENERATOR		FAILED	20160704016	ATL
DHC 8 402	2720	ROTARY SWITCH	682169	SPRING BROKEN	20160705007	PNR
DHC 8 402	2750	FLAP CONTROL UNIT	C1599931001	FAILED	20160730001	PNR
DHC 8 402	2810	ACCESS PANEL	85714220103	CRACKED	20160811002	QUE
DHC 8 402	2823	ENGINE FEED SHUT-OFF VALVE	2960042101	LEAKING	20160728019	ATL
DHC 8 402	2900	HYDRAULIC PUMP	661734	LEAKING	20160907007	PNR
DHC 8 402	2900	HYDRAULIC SYSTEM		SERVICED	20160727006	PNR
DHC 8 402	2900	ISOLATION VALVE	9752535	LEAKING	20160905002	PNR
DHC 8 402	2911	ENGINE DRIVEN PUMP		FAILED	20160913006	ONT
DHC 8 402	2913	ENGINE DRIVEN PUMP	6617303	SHEARED SHAFT	20160708008	ONT
DHC 8 402	2913	ENGINE DRIVEN PUMP	6617303	FAILED	20160725009	ONT
DHC 8 402	2913	HYDRAULIC PUMP	6617304	FAILED	20160728016	PNR
DHC 8 402	2913	HYDRAULIC PUMP	6617304	FAILED	20160926003	PNR
DHC 8 402	2933	QUANTITY INDICATOR		FAULTY	20160926013	ONT
DHC 8 402	2997	WIRING	B080140222	CUT	20160921004	QUE
DHC 8 402	3010	VALVE-HEATED DUAL DISTRIBUTOR	4100S00504	FAILED	20160830010	ONT
DHC 8 402	3040	CAPTAINS SIDE WINDOW	17180009	FAULTY SENSOR	20160713021	QUE
DHC 8 402	3230	PROXIMITY SENSOR	401020101	INTERMITTENT	20160907005	PNR
DHC 8 402	3230	SOLENOID SEQUENCE VALVE	483025	SUSPECT	20160714020	PNR
DHC 8 402	3231	BRACKET		WORN	20160823013	ONT
DHC 8 402	3231	GEAR SELECTOR		FAULTY	20160706002	PNR
DHC 8 402	3234	SELECTOR LANDING GEAR CONTROL	860T10466001	FAULTY	20160826003	PNR
DHC 8 402	3241	WHEEL SPEED XDUCER	6007047	FAILED	20160802009	PNR
DHC 8 402	3246	CONE BEARING	2967520629	FAILED	20160928010	PNR
DHC 8 402	3251	ROTARY VARIABLE DIFFERENTIAL TRANSDUCER		FAULTY	20160927015	ATL

Make/Model	Jasc	Part Name	Part Number	Part Condition	SDR No.	RGN
DHC 8 402	3297	WIRE	B080140222	CHAFED	20160719007	PNR
DHC 8 402	3340	LENSES	85720093102	ERROSION	20160909007	QUE
DHC 8 402	5210	DOOR STOP ASSEMBLY	85217035003	DAMAGED	20160819004	PNR
DHC 8 402	5600	RIGHT-HAND FORWARD WINDSHIELD	NP15790120	CRACKED	20160920024	ATL
DHC 8 402	5620	WINDOW		PERFORATED	20160829005	ATL
DHC 8 402	7110	LOWER COWL HINGE FITTING	87144111105	CRACKED	20160810003	QUE
DHC 8 402	7500	DUCT LEAK	8209083	FAILED	20160825003	QUE
DHC 8 402	7500	PNEUMATIC PRE-COOLER	8209723	LEAK DUE TO CORR	20160713022	QUE
DHC 8 402	7610	CAM		WORN	20160912009	ATL
DHC 8 402	7800	EXHAUST		DAMAGED	20160928011	ATL
DHC 8 402	7921	DOOR ACTUATOR		ERRATIC	20160711016	ATL

DIAMOND - AS

Make/Model	Jasc	Part Name	Part Number	Part Condition	SDR No.	RGN
DA 40	2297	WIRE	NOTAPPLICABLE	CHAFED	20160602005	ONT
DA 40	5210	REAR DOOR	DA4522100003ASY	DAMAGED	20160909003	ONT
DA 40 D	8100	TURBO CHARGER		FAILURE	20160908009	ONT
DA 42	5210	REAR DOOR	DA45221000004	DAMAGED	20160909001	ONT

DIAMOND - CAN

Make/Model	Jasc	Part Name	Part Number	Part Condition	SDR No.	RGN
DA 20 C1	2731	TRIM SWITCH	T10076	STICKING	20160520009	ATL
DA 20 C1	5210	LATCH LEFT-HAND	2256136100	CRACKED	20160623001	ATL
DA 20 C1	2421	BOLT	2224120001	BROKEN	20160928020	ATL
DA 20 C1	2720	BRAKE PEDAL ASSEMBLY	2227271400	CRACKED	20160905001	ATL
DA 20 C1	2730	ELEVATOR VERTICAL PUSHROD	2227302100	UNSERVICEABLE	20160914008	ONT
DA 20 C1	3246	NOSE WHEEL BEARING	60042RSHC3	FAILED	20160829003	ATL
DA 20 C1	5320	STEP PILOT	2052100300	CRACKED	20160908004	ONT

DOUGLAS

Make/Model	Jasc	Part Name	Part Number	Part Condition	SDR No.	RGN
DC3C	1497	WIRE		CHAFING WIRE	20160414008	ONT
DC3C	2100	AIR-CONDITIONING MOTOR	ZS580031	BEARING FAILURE	20160419003	ONT

EMBRAER

Make/Model	Jasc	Part Name	Part Number	Part Condition	SDR No.	RGN
EMB 145EP	2840	WIRE HARNESS	14570517403	CHAFED	20160614016	ONT
EMB 500	3242	BRAKE TRI-METALLIC	900050253	OVERHAULED	20160512001	QUE
EMB 500	3500	OXYGEN SYSTEM PRESSURE LIGHT		CRACKED	20160414005	PNR
EMB 505	2100	AIR CONDITIONING	11337204	SEIZED	20160614008	PNR

Make/Model	Jasc	Part Name	Part Number	Part Condition	SDR No.	RGN
EMB 505	5753	FLAP TRACK		WORN	20160914014	PNR
ERJ 170 200 SU	2810	COUPLING	14C6624A	CRACKED	20160517009	ONT
ERJ 170 200 SU	2711	DISCONNECT DEVICE ASSEMBLY	1702429840	MISALIGNED	20160826005	ONT
ERJ 170 200 SU	3242	PRESURE PLATE		SHATTERED	20160725007	ONT
ERJ 170 200 SU	3710	DUCT		CRACKED	20160919004	ONT
ERJ 190 100 IGW	1220	OIL TANK		OVER SERVICED	20160524021	QUE
ERJ 190 100 IGW	2211	AUTOPILOT SERVO	2R5310A	FAILED	20160606001	QUE
ERJ 190 100 IGW	2450	GENERATOR CONTROL UNIT	1701321D	FAILED	20160525007	QUE
ERJ 190 100 IGW	2782	SLAT ACTUATOR TYPE D	1703909A	FAILED	20160621002	QUE
ERJ 190 100 IGW	2911	ENGINE DRIVER PUMP	5116404	FAILED	20160526007	QUE
ERJ 190 100 IGW	3250	ROTARY VARIABLE DIFFERENTIAL TRANSDUCER		CONTAMINATED	20160505002	QUE
ERJ 190 100 IGW	2911	ENGINE DRIVEN PUMP	5116404	LEAKING	20160906006	QUE
ERJ 190 100 IGW	3240	PRESSURE SWITCH	52615500	FAILED	20160808009	QUE
ERJ 190 100 IGW	3610	BLEED PRESSURE RELEASE VALVE	10012463	FAILED	20160801004	QUE

EUROCOPTER FRANCE

Make/Model	Jasc	Part Name	Part Number	Part Condition	SDR No.	RGN
EC 120 B	6210	MAIN ROTOR BLADE	C621A1006103	UNSERVICEABLE	20160405010	PNR
EC 120 B	0	SUPPORT	677110511	BROKEN	20160912018	PAC

FAIRCHILD

Make/Model	Jasc	Part Name	Part Number	Part Condition	SDR No.	RGN
SA227AC	2420	INVERTER	PC350	NOT FUNCTIONAL	20160414004	ONT
SA227AC	5311	BELT FRAMES		CRACKED	20160602008	PNR
SA227AC	8011	RELAY	A703DB	STICKY	20160608004	ONT
SA227AC	3220	THRUST BEARING	NTA3648	IN SERVICE	20160728020	PAC
SA227DC	2140	MIXING VALVE	BYLB504371	SEIZED	20160414003	ONT
SA227DC	6122	PROPELLER GOVERNOR	89741016	OUT OF RIG	20160608005	ONT
SA227DC	6122	PROPELLER GOVERNOR	8974106	OUT OF ADJUSTMENT	20160812002	ONT

GULFSTREAM - ISRAEL

Make/Model	Jasc	Part Name	Part Number	Part Condition	SDR No.	RGN
ASTRA SPX	2430	WIRE	25W817190503	CHAFFING	20160525004	PNR
GULFSTREAM 200	3297	CANNON PLUG	D3899924WB9	CORRODED	20160506004	ONT
GULFSTREAM G150	2435	STARTER-GENERATOR		FAULTY	20160714023	PNR

HUGHES

Make/Model	Jasc	Part Name	Part Number	Part Condition	SDR No.	RGN
369D	2810	ROLLOVER VALVE	369H8108505	UNSERVICEABLE	20160413031	PAC
369D	6420	TAIL ROTOR SWASHPLATE	AM369D21800501	UNSERVICEABLE	20160808012	PAC

KAMOV

Make/Model	Jasc	Part Name	Part Number	Part Condition	SDR No.	RGN
KA32A11BC	0	UPPER HUB	1044210412200010	SUSPECTED CRACK	20160923021	PAC

LEARJET

Make/Model	Jasc	Part Name	Part Number	Part Condition	SDR No.	RGN
35A	2910	HYDRAULIC TUBE ASSEMBLY	2607003453	ORIGINAL	20160613011	PNR
45	2721	ROD END	E6579L4	STIFF	20160607007	PAC
45	2820	O-RING	MS29513117	MISSING	20160429005	PAC
45	5150	WASHER TAB	4527102070001	UNBENT	20160711011	PNR

LOCKHEED

Make/Model	Jasc	Part Name	Part Number	Part Condition	SDR No.	RGN
188C	3246	OUTER WHEEL HALF	10955	UNSERVICEABLE	20160506009	PNR
188C	5311	MAIN FRAME	801030102	CORROSION	20160520011	PNR
188C	5700	WING PANEL 2	839802	REPAIRABLE	20160520012	PNR
382	1410	HOSE ASSEMBLY HYDRAULIC PUMP PRESS	17014110CR0285	RUPTURED	20160425012	PAC

MITSUBISHI - USA

Make/Model	Jasc	Part Name	Part Number	Part Condition	SDR No.	RGN
MU 2B60	2701	GRIP	030A6113391	CRACKED	20160512013	ONT
MU 2B60	7500	BLEED AIR TUBE	035A63231	CRACKED	20160519006	PNR

PIAGGIO

Make/Model	Jasc	Part Name	Part Number	Part Condition	SDR No.	RGN
P180 AVANTI II	3242	RIGHT-HAND BRAKE ASSEMBLY	215045	CRACKED	20160408010	ONT

PILATUS - SW

Make/Model	Jasc	Part Name	Part Number	Part Condition	SDR No.	RGN
PC 12 47	2435	STARTER GENERATOR	23085024	ASSEMBLED WRONG	20160401004	PNR
PC 12 47E	3200	PRESSURE GAGE SWITCH	9738114307	UNSERVICEABLE	20160825009	ONT
PC 12 47E	3421	ELECTRONIC STANDBY INSTRUCTIONS	C16221JA01	PITCH/ROLL ERROR	20160822016	ONT
PC 12 47E	3421	ELECTRONIC STANDBY INSTRUCTIONS	C16221JA01	PITCH/ROLL ERROR	20160822018	ONT
PC 12 47E	5600	WINDSHIELD	9598110110	CRACKED	20160927012	ONT

PIPER

Make/Model	Jasc	Part Name	Part Number	Part Condition	SDR No.	RGN
PA28 140	2710	YOKE	6201903	CRACKED	20160502010	PAC
PA28 140	5711	SPAR ASSEMBLY AFT LEFT	6205300	CORRODED	20160621007	ONT
PA28 236	7160	AIRBOX	3592802	CRACKED	20160817025	PNR
PA31 350	2752	TRANSMISSION ASSEMBLY	8407	SHEARED	20160919016	ONT
PA31 350	5312	REAR BULKHEAD	40602008	CRACKED	20160822019	ONT
PA34 200	7160	FLAPPER BEARING	758501	WORN	20160812010	PNR
PA42	5210	DOOR		CRACKED	20160512008	QUE
PA42	7120	ENGINE MOUNT		SERVICEABLE	20160512007	QUE
PA42	7412	EXCITER IGNITION	103815501	OVERHAULED	20160420008	ONT
PA42	3252	SHIMMY DAMPNER	1500100	ENDOMMAGEE	20160912017	QUE
PA44 180	2750	FLAP CABLE	62701185	FRAYED	20160509007	ATL
PA44 180	3233	ACTUATOR	9686002	UNSERVICEABLE	20160601012	QUE
PA44 180	7900	OIL QUICK DRAIN VALVE	CCA1400	OPENED	20160616003	PNR
PA44 180	0	AIRBOX	86245841	CRACKED	20160825008	PNR
PA44 180	3230	NOSE GEAR ACTUATOR RODEND	452729	BROKEN	20160823011	ONT
PA44 180	7160	AIRBOX BACK	104757002	CRACKED	20160711017	ATL
PA44 180	7160	AIRBOX BACK COVER	104757002	BROKEN	20160805006	ATL
PA44 180	7160	AIRBOX BACK COVER	104757002	CRACKED	20160811003	ATL

ROBINSON

Make/Model	Jasc	Part Name	Part Number	Part Condition	SDR No.	RGN
R22 BETA	7610	TWIST GRIP	A6011	SERVICEABLE	20160722001	ONT
R44 II	2400	SWITCH	V31001	FAILED	20160425008	PNR
R44 II	7414	BALL BEARING	2202	WEAR	20160526003	ONT
R44 II	7414	MAGNETO POINTS	CMI1431	WORN POINTS	20160526006	PNR
R44 II	7414	TIME DELAY ASSEMBLY	D8801	NEW	20160721024	PNR
R66	0	BEARING HOUSING	F1721	CRACKED/BROKEN	20160913004	PNR
R66	2100	ARM WELDMENT	G7811	CRACKED	20160706007	PNR

ROCKWELL COLLINS

Make/Model	Jasc	Part Name	Part Number	Part Condition	SDR No.	RGN
690A	0	VERTICAL STABILIZER		BENT	20160414013	PNR
690A	0	SEAL		LEAKS	20160830019	PAC

SCHWEIZER

Make/Model	Jasc	Part Name	Part Number	Part Condition	SDR No.	RGN
SGS 2 33A	2711	RATCHET LOCK	33141039	MISALIGNED	20160527009	QUE

SIKORSKY

Make/Model	Jasc	Part Name	Part Number	Part Condition	SDR No.	RGN
S61N	6730	AUXILIARY SERVO ASSEMBLY	S616561500	OVERHAULED	20160901008	PAC
S76A	5280	HINGE	7620710005114	BROKEN	20160407011	PAC
S76A	5430	ACCESS PANEL	7630207014	MISSING	20160426029	ONT
S76C	6700	PUSHROD ASSEMBLY-ADJUSTABLE	76400000149	LOOSE	20160525005	ONT
S92A	3130	IMMERSION SENSOR	9225012803102	MALFUNCTIONING	20160829020	ATL
S92A	6300	INPUT MODULE	923511500145	UNSERVICEABLE	20160829021	ATL
S92A	6300	MAIN GEARBOX MODULE	923511510004	MAKING METAL	20160906002	ATL
S92A	6320	BEARING	SB1074103	UNSERVICEABLE	20160727010	PAC

SWEARINGEN

Make/Model	Jasc	Part Name	Part Number	Part Condition	SDR No.	RGN
SA226TC	2900	TUBE ASSEMBLY	2781032095	CRACKED	20160422006	PNR
SA226TC	2701	BOLT	AN537A	SHEARED	20160812003	PNR
SA226TC	6122	PROPELLER GOVERNOR	89365117	UNSERVICEABLE	20160909016	PNR
SA226TC	6123	UNFEATHERING PUMP	C4033E	UNSERVICEABLE	20160822026	PNR
SA226TC	7120	ENGINE TRUSS	2762002001	CRACKED	20160908012	PNR
SA227AT	2613	FIRE DEFECTOR	1734361350	IN SERVICE	20160711012	PAC

TECNAM

Make/Model	Jasc	Part Name	Part Number	Part Condition	SDR No.	RGN
P2006T	3230	ATTACH PLATE	26217171	BENT	20160427008	PNR

VIKING CANADA

Make/Model	Jasc	Part Name	Part Number	Part Condition	SDR No.	RGN
DHC 6 400	2435	COOLING FAN	230481490	BROKEN BLADE	20160621011	PNR
DHC 6 400	2710	PULLEY BRACKET	C6F512612729	NEW	20160415011	PAC
DHC 6 400	2710	PULLEY BRACKET	C6F512612729	NEW	20160415010	PAC
DHC 6 400	2810	RETAINING RING	C6PFM108427	USED	20160706009	PAC
DHC 6 400	3240	LINK	C3CF4523	IN SERVICE	20160803004	PNR
DHC 6 400	5500	PLATE - SIDE ENGINE MOUNT	C6WM151928	USED	20160811006	PAC

ENGINE

ALLISON

Make/Model	Jasc	Part Name	Part Number	Part Condition	SDR No.	RGN
250-C20B	7200	ENGINE	250C20B	FAILURE	20160620008	QUE
250-C20B	7210	BEARING		DAMAGED	20160517011	QUE
250-C20B	7321	FUEL CONTROL UNIT	252464431	OVERHAULED	20160613012	PNR
250-C20B	7230	BEARING	6889093	SPALLING	20160920023	PAC
250-C20B	7240	TURBINE	23069745	OVERHAULED	20160727009	PAC
250-C20R	7240	#2 NOZZLE	23031968AL	SCRAP	20160803008	QUE
250-C47B	7230	ENGINE	250C47B	FAILURE	20160620006	QUE
250-C47B	7240	OUTER COMBUSTION CAN	M25010404	UNSERVICEABLE	20160505004	ONT
250-C47B	7210	STUD	AN150826	SHEARED OFF	20160708010	ONT
501-D13	7321	FUEL CONTROL UNIT	3300588	FAULTY	20160623010	PNR
501-D13H	7321	FUEL CONTROL UNIT	3300588	FAULTY	20160614024	PAC
501-D13H	7532	BLEED VALVE	6809125C	FAULTY	20160802018	PAC

AUSTRO ENGINE

Make/Model	Jasc	Part Name	Part Number	Part Condition	SDR No.	RGN
E4-B	8120	INTERCOOLER	D6481200000X0	ON CONDITION	20160512010	ONT

AVCO LYCOMING

Make/Model	Jasc	Part Name	Part Number	Part Condition	SDR No.	RGN
AEIO-360-A1B6	7414	DISTRIBUTOR GEAR	K3008	LOOSE	20160419001	ONT
AEIO-360-A1B6	7414	DISTRIBUTOR GEAR	K3822	LOOSE	20160624007	ONT
AEIO-360-A1B6	8530	ENGINE CYLINDER	LW10925	CRACKED	20160531004	ONT
IO-360-L2A	8011	STARTER	PM2401	FAILED	20160419016	ONT
IO-360-L2A	8530	CYLINDER ASSEMBLY	05K21104	UNSERVICEABLE	20160606011	PNR
IO-360-L2A	8011	STARTER	149NL	BROKEN	20160824009	PNR
IO-360-L2A	8530	ENGINE CYLINDER	LW12427	CRACKED	20160718009	PAC
IO-540-AE1A5	8530	CYLINDER ASSEMBLY	05K21120	VALVE FAILURE	20160912003	PAC
LO-360-A1H6	8530	CYLINDER	LW12427	CRACKED	20160922005	ATL
LO-360-E1A6D	8530	CYLINDER ASSEMBLY	05K21121	DAMAGED	20160912020	ATL
LTIO-540-J2BD	7322	FUEL SERVO	25245009	FAILURE	20160622002	PNR
LTIO-540-J2BD	8120	TURBOCHARGER	4091709001	FAILED	20160517006	ONT
LTIO-540-J2BD	0	TURBOCHARGER	4091709001	FAILED/SEIZED	20160927014	ONT
LTIO-540-J2BD	5440	TURBO SUPPORT ASSEMBLY	LW18302	BROKEN	20160719003	PNR
LTIO-540-J2BD	7314	FUEL PUMP	200F5004R	LOW PRESSURE	20160708009	PNR
LTIO-540-J2BD	8120	TURBO CHARGER	4091709001	LEAKING OIL	20160726009	PAC
LTIO-540-J2BD	8530	STUD	5015	BROKEN	20160720009	PAC
O-235-L2C	7414	MAGNETO	4381	FAILED	20160914011	ONT
O-320-D2J	7414	MAGNETO	4371	FAILURE	20160726003	PNR
O-320-D2J	8500	ENGINE	O320D2J	CRACKED	20160909005	ATL
O-320-D2J	8530	CYLINDER	05K21100CL4N	NIO COMPRESSION	20160901009	PNR
O-320-E2D	7414	ROTOR SHAFT	S4LSC204	BROKEN	20160621008	ONT
O-320-E3D	0	CRANKCASE	11B200611SB	UNSERVICEABLE	20160721022	ONT
O-320-E3D	8500	CRANKCASE	11B200611SB	CRACKED	20160717001	ONT
O-360-A4M	8530	CYLINDER		CRACKED	20160909004	ATL
O-540-B2C5	8500	ENGINE	0540B2C5	FAILED	20160719011	PNR
TIO-540-A2C	8530	VALVE SPRING RETAINER	SL69532	CRACKED	20160824001	ONT
T5317A	7321	DRIVESHAFT	91620	FAILED	20160525009	PNR

BOMBARDIER ROTAX

Make/Model	Jasc	Part Name	Part Number	Part Condition	SDR No.	RGN
912 S	8550	OIL PUMP SHAFT ASSEMBLY	837129	BROKEN	20160808013	PAC
912 S3	8520	FLYWHEEL HUB	966872	CRACKED	20160520010	PAC

CFM INTERNATIONAL

Make/Model	Jasc	Part Name	Part Number	Part Condition	SDR No.	RGN
CFM56-5A1	2612	FIRE DETECTION UNIT	372100	FAILED	20160902004	QUE
CFM56-5A5	4900	AUXILIARY POWER UNIT ENGINE	4500001C	DEFECT	20160919003	QUE
CFM56-5B6	7310	HIGH PRESSURE TURBINE CONTROL VALVE	3296954	FAILED	20160708003	QUE
CFM56-7B24	1430	AIR/OIL SEPARATOR	3371085200	UNSERVICEABLE	20160722007	PNR

CURTISS WRIGHT

Make/Model	Jasc	Part Name	Part Number	Part Condition	SDR No.	RGN
R3350-24WA	8560	IMPELLER SUPERCHARGER	128342	VANE DAMAGE	20160819014	PAC

GARRETT

Make/Model	Jasc	Part Name	Part Number	Part Condition	SDR No.	RGN
TFE731-20R	7261	ENGINE	TFE73120AR1B	UNSERVICEABLE	20160609007	PNR
TPE331-11U	7261	OIL LINE	31080711	IN SERVICE	20160420007	PAC
TPE331-11U	7321	FUEL CONTROL UNIT	8978014	IN SERVICE	20160418014	PAC
TPE331-11U-612G	7200	AFT PROPELLER SHAFT BALL INNER	3583603	NEW	20160901003	PNR
TPE331-12UHR	7500	UPPER PRE COOLER PIPE	1379276L403	CRACKED	20160914019	QUE

GENERAL ELECTRIC

Make/Model	Jasc	Part Name	Part Number	Part Condition	SDR No.	RGN
CF34-3B1	7160	PLUG	4150T37G01	BROKEN	20160513005	ATL
CF34-3B1	7230	STAGE 2 HIGH PRESSURE BLADES		DAMAGED	20160712004	QUE
CF34-3B1	7261	O-RING	M832481216	DAMAGED	20160908015	ONT
CF6-80C2	7261	OIL LINE	1323M39G01	CHAFFED	20160426025	QUE

PRATT & WHITNEY-CAN

Make/Model	Jasc	Part Name	Part Number	Part Condition	SDR No.	RGN
JT15D-5R	7200	UPPER DUPLEX BEARING	305361601	SCRAP	20160921006	ATL
PT6A-27	7250	BLADE POWER TURBINE	3013102	UNSERVICEABLE	20160406001	ATL
PT6A-27	7261	O-RING	3001641	NICKED	20160722005	PNR
PT6A-28	7250	COMPRESSOR TURBINE BLADE	310240101	CRACKED	20160418001	QUE
PT6A-34	1400	ELBOW	MS919406	NON-CONFORMING	20160626001	QUE
PT6A-38	7314	MATCHED GEAR SET	90207801A	NEW	20160818005	ATL
PT6A-41	7250	COMPRESSOR TURBINE DISK	30492901	UNSERVICEABLE	20160415001	PNR
PT6A-41	7321	FUEL CONTROL UNIT	324475522	UNSERVICEABLE	20160914009	QUE
PT6A-42	7250	COMPRESSOR TURBINE BLADE	3027301	NEW	20160423001	PNR
PT6A-42	7261	OIL FILTER	PMA303429WFC	NEW	20160502012	PNR
PT6A-42	7310	FUEL PRESSURE TUBE	3026779	SERVICEABLE	20160901006	PNR
PT6A-42	7720	T5 HARNESS	311221401	WORN INSULATION	20160725014	PNR
PT6A-52	1000	BOLTS	MS969608	MIXED INTO PKG O	20160924001	QUE
PT6A-64	7250	HEX BOLT	3013817	NEW	20160727008	ATL
PT6A-65AG	7600	SUPPORT ENGINE START CABLE	520691	LOOSE	20160712011	PAC
PT6A-67D	7250	TURBINE		DAMAGED	20160916009	ONT
PT6T-3B	7323	GOVERNOR	25249996	OVERHAULED	20160725019	PAC
PW120	7200	No. 4 BEARING	311161801	FRACTURED	20160822020	ATL
PW120	7314	HIGH PRESSURE FUEL PUMP	5009984C	CRACKED	20160902001	ONT
PW120A	7200	HIGH PRESSURE STUBSHAFT	312004702	FRACTURED	20160617004	ATL
PW123	6120	PROPELLER CONTROLS		UNSERVICEABLE	20160429007	PNR
PW123	7321	FUEL CONTROL UNIT	324485318	FAILED	20160914013	ATL
PW123	7321	MAIN FUEL CONTROL	324485318	REMOVED FROM AIRCRAFT	20160916007	ATL
PW123B	7200	PROPELLER CONTROL UNIT	78249047	SERVICEABLE	20160404008	QUE
PW124B	7250	LOW PRESSURE BLADE	312270201	SEPARATED	20160613002	PNR
PW150A	5150	PLUG	819000	SERVICEABLE	20160826004	ATL
PW150A	7200	CUP WASHER	4	55% FSH	20160803005	ONT
PW150A	7210	REDUCTION GEARBOX	312163001	CHIPS DETECTED	20160711007	PNR
PW150A	7261	ENGINE	PW150A	LEAKING	20160714026	ATL
PW150A	7261	ENGINE	PW150A	LEAKING	20160909009	ATL
PW150A	7261	ENGINE	PW150A	OIL LEAK	20160808007	PNR
PW1500G	7220	FAN BLADE	5318921	DELAMINATED	20160825007	QUE

PRATT & WHITNEY-USA

Make/Model	Jasc	Part Name	Part Number	Part Condition	SDR No.	RGN
R-985	7322	CARBURETOR	NAR9B19PR	OVERHAULED	20160928013	PAC
R-985-AN-14B	8500	ENGINE	R985AN14B	DESTROYED	20160524023	ONT
R-985-AN-14B	8550	ENGINE	R985AN14B	DESTROYED	20160614013	ONT

ROLLS ROYCE-USA

Make/Model	Jasc	Part Name	Part Number	Part Condition	SDR No.	RGN
250-C300/A1	7230	IMPELLER	23076938	CORROSION	20160520005	PNR

TELEDYNE CONTINENTAL

Make/Model	Jasc	Part Name	Part Number	Part Condition	SDR No.	RGN
IO-240-B	7160	INTAKE TUBE	653885	CRACKED	20160413020	ATL
IO-240-B	7160	INTAKE TUBE	653885	CRACKED	20160528001	ATL
IO-240-B	7314	FUEL PUMP	6533513A5	LEAKING	20160620003	ATL
IO-240-B	7314	FUEL PUMP	6533514A5	LEAKING	20160520008	ATL
IO-240-B	7322	LEVER-THROTTLE & MIXTURE	6562093	INSTALLED BACKWA	20160614004	ONT
IO-240-B	7322	LEVER-THROTTLE & MIXTURE	6562093	STRIPPED	20160614002	ONT
IO-240-B	7314	FUEL PUMP	6533512	LEAKING	20160926006	ATL
IO-240-B	7314	FUEL PUMP	6533514A5	LEAKING	20160722008	ATL
IO-360-KB4B	8530	CYLINDER		MISINSTALLED	20160805005	ONT
IO-470-F	8530	PISTON	ECI654832	MISSING PIECE	20160909020	PNR
IO-520-D	7414	DISTRIBUTOR BUSHINGS		EXCESSIVELY WORN	20160408008	ONT
IO-520-D	8011	STARTER DRIVE ADAPTER	643259A18R	UNSERVICEABLE	20160614015	PAC
IO-520-D	8520	CONNECTING ROD		BROKEN	20160813002	ONT
IO-520-F	8500	CONNECTING ROD		DAMAGED	20160608011	PNR
IO-550-D	8530	CYLINDER	CL76E1R	BROKEN	20160624008	ATL
IO-550-D	8550	SEAL OIL FLANGE	642714	LOOSE	20160621012	PAC
IO-550-F	8520	CAMSHAFT		BEYOND REPAIR	20160522001	PNR
IO-520-F	7421	SPARK PLUG	RHB32E	CRACKED/FAILED	20160923009	PNR
IO-520-F	8550	OIL PICK UP TUBE	625207	CRACKS	20160822015	ONT
O-200-A	8530	PISTON	SA530348	CRACKED	20160911001	PNR
TSIO-360-FB	8530	CYLINDER AND VALVE ASSEMBLY	658189A1	SEPARATED	20160519001	ONT
TSIO-520-H	8530	INTAKE VALVE SPRING	654442	BROKEN	20160719009	PAC

PROPELLER**AEROPRODUCTS**

Make/Model	Jasc	Part Name	Part Number	Part Condition	SDR No.	RGN
A6441FN-606	6110	PROPELLER	A6441FN606	OVERSPEED	20160802017	PNR

DOWTY ROTOL

Make/Model	Jasc	Part Name	Part Number	Part Condition	SDR No.	RGN
R408/6-123-F/17	6112	DE-ICE WIRE HARNESS	697037220	WIRE BROKEN	20160607001	PNR
R408/6-123-F/17	6114	CHECK VALVE	P901041	LEAKING	20160609001	PNR
R408/6-123-F/17	6114	PROPELLER	697070003	EXCESS VIBRATION	20160505012	PNR
R408/6-123-F/17	6120	PROPELLER ELECTRONIC CONT	699018003	FAILED	20160418006	ONT
R408/6-123-F/17	6111	PROPELLER BLADE	697071003	CORRODED	20160704005	QUE
R408/6-123-F/17	6111	PROPELLER BLADE	697071003	SURFACE CRACK	20160912019	PNR
R408/6-123-F/17	6120	PITCH CONTROL UNIT	697073003	FAILED	20160905003	PNR

HAMILTON STANDARD

Make/Model	Jasc	Part Name	Part Number	Part Condition	SDR No.	RGN
14SF-5	6120	ACTUATOR ASSEMBLY	7901803	UNSERVICEABLE	20160401002	ONT
14SF-7	6120	PROP ACTUATOR	7901803	UNSERVICEABLE	20160509016	ATL
14SF-7	6114	BLADE	SFA13M1R0AD	BROKEN	20160815007	ATL
14SF-7	6114	OUTER BEARING RACE	7823011	FRACTURED	20160920015	PNR

HAMILTON SUNDSTRAND

Make/Model	Jasc	Part Name	Part Number	Part Condition	SDR No.	RGN
PROPELLER	6111	BLADE	SFA13S1POA	INTERNAL DAMAGE	20160622001	PNR
PROPELLER	6111	BLADE	SFA13S1POA	INTERNAL DAMAGE	20160803002	PNR

HARTZELL

Make/Model	Jasc	Part Name	Part Number	Part Condition	SDR No.	RGN
HC-E4A-3J	6112	PROPELLER DE-ICE BOOT	4H34001	DAMAGED	20160527012	ATL

MCCAULEY

Make/Model	Jasc	Part Name	Part Number	Part Condition	SDR No.	RGN
1C235/LFA7570	6111	PROPELLER	1C235LFA7570	CRACKED	20160419006	PAC
B3D36C442	6114	HUB		DAMAGED	20160413023	PNR

MT PROPELLER

Make/Model	Jasc	Part Name	Part Number	Part Condition	SDR No.	RGN
MT-175R-150-2CA	6114	PROPELLER	MT175R150CA	CRACKED	20160602009	PNR

EQUIPMENT**ACK TECHNOLOGIES**

Make/Model	Jasc	Part Name	Part Number	Part Condition	SDR No.	RGN
E04	2562	EMERGENCY LOCATOR TRANSMITTER	E04	FAILED TEST	20160617005	PNR

AMERI-KING

Make/Model	Jasc	Part Name	Part Number	Part Condition	SDR No.	RGN
AK451	2562	EMERGENCY LOCATOR TRANSMITTER	AK451	NO POWER	20160923020	PNR
AK451AFS	2562	EMERGENCY LOCATOR TRANSMITTER	AK451AFS	FALSE INDICATION	20160621013	PAC

BEECH

Make/Model	Jasc	Part Name	Part Number	Part Condition	SDR No.	RGN
W297	2597	WIRE	W297	CHAFFED	20160510001	PAC

CESSNA

Make/Model	Jasc	Part Name	Part Number	Part Condition	SDR No.	RGN
21641	7800	EXHAUST CLAMP HALF	21641	NEW	20160804003	PNR

CHAMPION

Make/Model	Jasc	Part Name	Part Number	Part Condition	SDR No.	RGN
4381	7414	MAGNETO	4381	LOOSE ELECTRODE	20160922007	PAC

DEHAVILLAND - CAN

Make/Model	Jasc	Part Name	Part Number	Part Condition	SDR No.	RGN
C6HF1020	2750	PISTON ROD	PDMC6FHM102327	NEW	20160628007	NCR

DORNE & MARGOLIN

Make/Model	Jasc	Part Name	Part Number	Part Condition	SDR No.	RGN
DMELT81	2562	EMERGENCY LOCATOR TRANSMITTER	DMELT81	FAILED TEST	20160624006	PNR

GARMIN

Make/Model	Jasc	Part Name	Part Number	Part Condition	SDR No.	RGN
GDU620	3160	DISPLAY UNIT	110126400	UNSERVICEABLE	20160512009	PNR
GDU620	3160	PRIMARY FLIGHT DISPLAY	110126400	UNSERVICEABLE	20160425007	PNR

GARRETT

Make/Model	Jasc	Part Name	Part Number	Part Condition	SDR No.	RGN
8590	2440	TIME DELAY RELAY	3055861A	UNSERVICEABLE	20160813001	PAC

GOODRICH

Make/Model	Jasc	Part Name	Part Number	Part Condition	SDR No.	RGN
5A330777	2565	EVACUATION SLIDE	5A33077	TIME EXPIRED	20160401013	QUE

GOODYEAR

Make/Model	Jasc	Part Name	Part Number	Part Condition	SDR No.	RGN
302013400	3246	AIRCRAFT TIRE TUBE	302013400	LEAKING	20160414006	ATL

HONEYWELL

Make/Model	Jasc	Part Name	Part Number	Part Condition	SDR No.	RGN
38007221	4900	FUEL NOZZEL MANIFOLD	38838991	CRACKED	20160414007	PNR

HTC

Make/Model	Jasc	Part Name	Part Number	Part Condition	SDR No.	RGN
500P2100105	6210	MAIN ROTOR BLADE ASSEMBLY	500P2100105	DELAMINATED	20160613017	PAC

KANNAD

Make/Model	Jasc	Part Name	Part Number	Part Condition	SDR No.	RGN
406AFCOMPACT	2562	EMERGENCY LOCATOR TRANSMITTER	S184050101	FAILED TEST	20160406008	PNR
KANNAD406AS	2562	PORTABLE EMERGENCY LOCATOR TRANSMITTER	S182350203	FAILED TESTING	20160413027	ATL
S182150202	2562	G-SWITCH		UNSERVICEABLE	20160802011	PNR

KING

Make/Model	Jasc	Part Name	Part Number	Part Condition	SDR No.	RGN
KING	3454	TRANSISTOR	7003810002	SHORT CIRCUIT	20160524025	ONT

SIKORSKY

Make/Model	Jasc	Part Name	Part Number	Part Condition	SDR No.	RGN
7635109600	6320	BEARING CUP	SB3317201	GALLING	20160720006	PAC
STC SA94-77						
7093009	3200	GEAR ASSEMBLY	70271019	BOLTS SHEARED	20160516006	ONT

TEAM

Make/Model	Jasc	Part Name	Part Number	Part Condition	SDR No.	RGN
ACP2531	2350	KNOB	106429AB01	BOGUS PART	20160726002	QUE

ZODIAC

Make/Model	Jasc	Part Name	Part Number	Part Condition	SDR No.	RGN
D30546	2560	ESCAPE SLIDE	D30546	FAILED TEST	20160426023	QUE

CESSNA

Make/Model	Jasc	Part Name	Part Number	Part Condition	SDR No.	RGN
EQUIPMENT	2000	AIR BOX	75014433	NEW	20160927013	PNR



ORDERING TC PUBLICATION AND FORMS

HEADQUARTERS

Transport Canada (AARDG)
Place de Ville, Tower C
Ottawa, ON K1A 0N8
Tel: 1-800-305-2059

REGIONAL OFFICES

Atlantic

Transport Canada
95 Foundry St., 6th Floor
Moncton, NB E1C 5H7
Tel: 1-800-305-2059

Prairie and Northern

Transport Canada
344 Edmonton Street
Winnipeg, MB R3C 0P6
Tel: 1-800-305-2059

Ontario

Transport Canada
4900 Yonge St., Suite 400
Toronto, ON M2N 6A5
Tel: 1-800-305-2059

Quebec

Transport Canada
700 Leigh Capreol
Dorval, QC H4Y 1G7
Tel: 1-800-305-2059

Pacific

Transport Canada
800 Burrard St., Suite 620
Vancouver, BC V6Z 2J8
Tel: 1-800-305-2059

North America:

1-800-305-2059

National Capital Region:

613 991-4071

Fax:

613 991-2081

E-mail:

MPS@tc.gc.ca

CIVIL AVIATION INTERNET SITES

Civil Aviation Homepage

www.tc.gc.ca/eng/civilaviation/menu.htm

Continuing Airworthiness

www.tc.gc.ca/eng/civilaviation/certification/continuing-menu-1432.htm

Canadian Aviation Regulations (CARs)

www.tc.gc.ca/eng/civilaviation/regserv/cars/menu.htm

Airworthiness Directive

www.tc.gc.ca/cawis-swimn

Civil Aviation Safety Alerts (CASA)

www.tc.gc.ca/civil-aviation-safety-alert

Web Service Difficulty Reporting System (WSDRS)

www.tc.gc.ca/wsdrs