



Transport
Canada

Transports
Canada



TP 6980E
(04/2015)

Feedback

Issue 4/2015

Canadian Aviation Service Difficulty Reports



One of fifteen Canadian Coast Guard (CCG) Bell 429 helicopters manufactured by Bell Helicopter Textron Canada (BHTC) of Mirabel, Quebec. The Bell 429 received type certification in July 2009.



Table of Contents

Heads Up	3
Fixed Wing	4
Engines	12
Rotorcraft.....	13
AME Symposia 2016	14
FAA Special Airworthiness Information Bulletins (SAIB).....	15
EASA Safety Information Bulletin (SIB)	16
Service Difficulty Reports (SDR).....	17
Ordering TC Publication and Forms.....	33
Civil Aviation Internet Sites.....	33



One of fifteen Canadian Coast Guard (CCG) Bell 429 helicopters manufactured by Bell Helicopter Textron Canada (BHTC) of Mirabel, Quebec. The Bell 429 received type certification in July 2009.

Feedback is published quarterly by the Continuing Airworthiness Division of Transport Canada, informing the aviation community of reported day-to-day problems that affect aircraft airworthiness in Canada.

Reprints of original *Feedback* material are encouraged, but credit must be given to Transport Canada's *Feedback* magazine. Please forward one copy of the reprinted article to the Editor.

To obtain information concerning copyright ownership and restrictions on reproduction of the material, please address your correspondence to:

J r mie Laviolette, Editor
Feedback
Transport Canada (AARDG)
Place de Ville, Tower C
Ottawa ON K1A 0N5

E-mail: jeremie.laviolette@tc.gc.ca
Tel.: 888-663-3639
Fax: 613-996-9178

To view *Feedback* online or to receive it electronically please visit:
www.tc.gc.ca/feedback-magazine

The articles contained in *Feedback* are derived from *Service Difficulty Reports* (SDRs) submitted by Aircraft Maintenance Engineers (AMEs), owners, operators and other sources in accordance with *Canadian Aviation Regulation* (CAR) 521.

SDRs are normally published verbatim. Transport Canada assumes no responsibility for the accuracy or content of any of these reports. Only spelling errors are corrected and content may be reduced as well as personal references deleted.

All defects or occurrences should be reported to Transport Canada through the Service Difficulty Reporting Program. For additional information about this program or concerning an article in *Feedback* magazine, contact your nearest Transport Canada Centre.

For all technical inquires related to articles of this magazine, please address your correspondence to CAWWebFeedback@tc.gc.ca

Feedback est aussi disponible en fran ais.

  Her Majesty the Queen in Right of Canada, as represented by the Minister of Transport (2015).

ISSN 1925-8429 (Online)

TP 6980E
(04/2015)

TC-1005710

AAIR Paperless Initiative

Effective January 1, 2016, Transport Canada (TC) will begin electronic notification of the Annual Airworthiness Information Report (AAIR). TC is moving in this direction to reduce its environmental footprint and better manage public funds.

Within the first couple of weeks of January each year, aircraft owners will receive their AAIR notification via email which will include a web link to their AAIR and instructions on how to complete it online. They will require their AAIR access code in order to log into the system. The AAIR Access Code is the same each year and can be found on the top right hand corner of any AAIRs sent in previous years.

For owners who don't have an e-mail address, the AAIR form will be sent by FAX and owners will have the choice to go online to complete it or to send the completed form to TC via regular mail.

AAIR due dates for all aircraft including those part of a Fleet have been changed to March 30 of each year. It is important to note that the due date for the AAIR is not related to the annual inspection date. The AAIR requires the date of the most RECENT annual or 100-hour inspection which could have occurred in the previous calendar year.

If the aircraft owner is unsure if Transport Canada has their correct e-mail address or FAX number on file, for assistance in order to complete the AAIR online, to obtain the AAIR access code in the event it was misplaced, or for any question or concerns related to AAIRs, please contact the AAIR personnel at 1 888 663 3639 or at cawwebfeedback@tc.gc.ca.

AIRBUS, A310 308

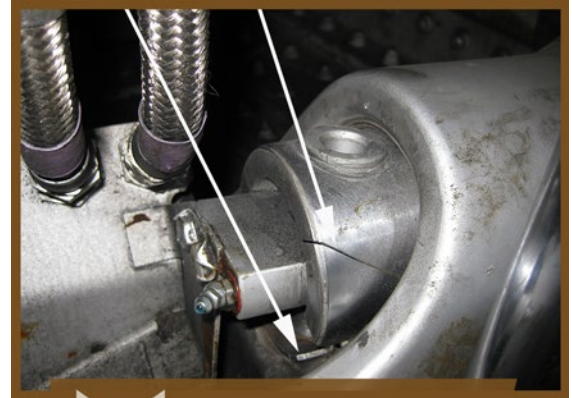
SDR # 20131213008

Main Landing Gear Hinge Pin Failure Due to Corrosion

SDR submitted:

During an A-check while performing lubrication of the left-hand main landing gear (MLG), the forward attachment hinge pin was found with cracks and a portion broken off. This pin is part of the gear and is replaced with the gear on overhaul. The gear was last overhauled in October 2007 and had accumulated 24 227 flight hours and 4919 flight cycles.

The hinge pin was replaced and the necessary landing gear functional checks were performed, making the aeroplane serviceable.



Main landing gear hinge pin cracks and missing piece

Transport Canada Comments:

The operator reported these findings to Airbus who confirmed another report of a ruptured forward MLG hinge pin. Subsequent investigation confirmed that corrosion was a contributor to the crack initiation and propagation leading to the part fracture. The crack initiation site showed a loss of protective coating in the fillet of the hinge pin hole. The inspection also revealed an uneven cadmium plating under the primer coat and suggests a questionable repair had been performed in this area which contributed to the start of the corrosion.

AIRBUS, A330 243

SDR # 20140226009

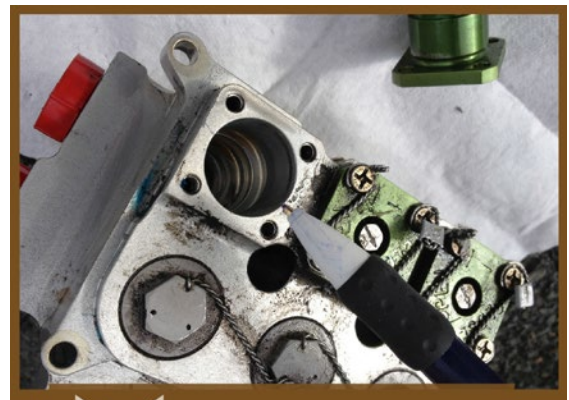
Hydraulic Ground Service Manifold Failure

SDR submitted:

During taxi, prior to take-off, the flight crew observed a blue hydraulic system low level warning. The aeroplane returned to the gate for investigation where maintenance revealed that the blue hydraulic system ground service manifold had failed. One of its manual shut-off valves had separated from the valve body, causing the fluid loss. The shut-off valve was later found within the wheel-well area.

Further investigation showed that the valve retaining bolts had sheared off, allowing the valve to separate from the manifold, causing the complete loss of the hydraulic fluid.

The manifold assembly was replaced, the hydraulic system serviced and the aeroplane returned to service.



Ground Service Hydraulic Manifold missing valve body

Transport Canada Comments:

As this is a known problem to Airbus Industries, in July 2007 Airbus issued Service Bulletin A330-29-3104, which improved the retaining bolts of the ground service manifold. Transport Canada recommends Airbus A330 operators to comply with Airbus Service Bulletin A330-29-3104.

Misrouted Engine Fuel Control Cable

SDR submitted:

During a planned major structural inspection, the technician noticed that the no.1 engine high-pressure fuel lever cable was trapped under the cover of the electrical junction box. The box straddles the area beneath the floor.

Luckily the cable was still able to move and function normally as there was only a slight cable deflection under a flexible plastic cover.

The cable was inspected, found to be serviceable with no apparent damage. The cable was properly re-routed above the junction box as per the maintenance manual requirements.



Misrouted engine fuel lever control cable fretting on the aeroplanes structure

Transport Canada Comments:

The mis-routing of this control cable was done at either its last replacement or re-installation from a past maintenance check or snag rectification. As it is with any primary flight or engine control, an independent inspection and dual sign-off would have been required as stated in CAR standard 571.10, maintenance release.

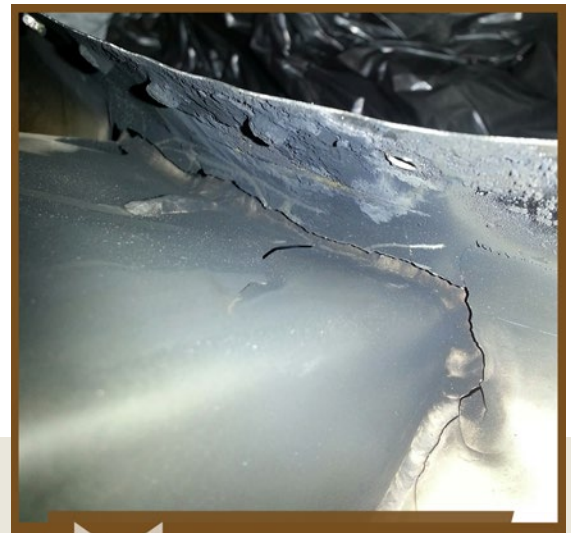
Transport Canada Civil Aviation would like to advise all maintenance personnel that the inspection criteria includes an operational check and confirmation for correct assembly of the complete affected system.

Engine Inlet Heater Duct Cracks

SDR submitted:

During phase 3 inspections, the heated air inlet "hot-lip" vent duct of the #2 engine lower cowling, was found cracked around the welding and with a large hole (material missing). This aeroplane has the Butterfield flow-through exhaust Supplemental Type Certificate (STC) SA2905NM embodied on both cowling inlets.

This is the third aeroplane of the fleet to have the inlet vent duct cracked at the welding and with holes.



Visible crack in the bend radius of the duct likely caused by vibration.

Transport Canada Comments:

If you find soot inside the cowlings on a B200 King Air with the exhaust heated intake lip, take time to look around for any damage to the pipes and the intake heater as they are known to crack under vibration. This is a good example of where propeller balancing will reduce vibration and cracking of these parts.

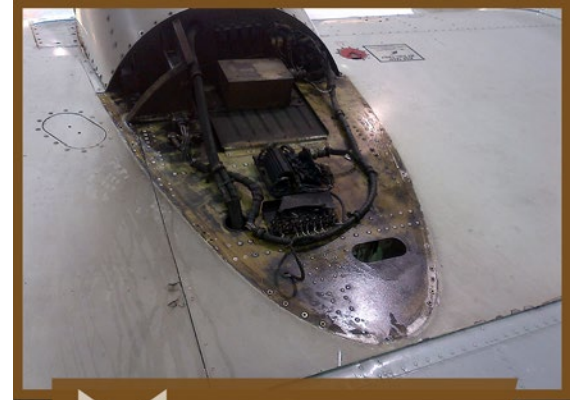
Missing Cowling

SDR submitted:

The aeroplane requested clearance to return due to a missing piece of a cowling. Clearance was issued, no emergency was declared and the flight landed safely.

Once inspected by maintenance it was confirmed that the left-hand (L/H) upper aft cowling, part number (p/n) 114-980078-21, was missing. It was determined that the cowling was only put in place by hand and had not been secured with any of the required hardware prior to aeroplane departing for its first flight of the day.

The surrounding structure/inserts/nutplates for the L/H upper aft nacelle cowling, p/n 114-980078-21, was inspected for condition and security. All structure/inserts/nutplates to support the L/H upper aft nacelle cowling were found to be in a serviceable condition, no deformation or cracking was evident. The aeroplanes and associated/adjacent structure (fuselage, stabilons, taillets, elevators, surrounding flight controls) were also inspected for signs of damage (i.e dents, cracks, deformation, etc...) with no damage evident. The flight controls were inspected for binding & freedom of movement with no faults noted. Serviceable L/H upper aft nacelle removed from another aeroplane and installed in accordance with maintenance manual 54-30-00. The aeroplane was returned to service.



Missing section of the aft nacelle clearly shows that no fasteners were installed to secure the cowl section.

Transport Canada Comments:

Distractions can cause work to be left uncompleted. If work is to be left uncompleted, it should be flagged so that the aircraft won't be dispatched in an un-airworthy condition. There have been a number of events on various Beech model aeroplanes with PT6 engines where the forward upper cowl was lost in flight due to an incorrect installation.

Speed-Brake Control Cable Failure

SDR submitted:

The pilots reported that during flight, the aeroplane was rolling to the left when the speed-brakes were deployed. A maintenance investigation discovered the wing spoiler assembly #1 spoiler cable had failed causing the rolling effect on the aeroplane.

The cable was replaced, system re-rigged with all functional checks performed as per the Aircraft Maintenance Manual (AMM) and the aeroplane was returned to service.



A spoiler control cable that failed after it was in a frayed condition

Transport Canada Comments:

The maintenance and servicing instructions of Boeing 727 aeroplane control cables are captured under AMM 12-20-01, Cable Lubrication.

Noted as a CAUTION in this AMM, only carbon steel cables are to be lubricated with grease where stainless steel cables require no form of lubrication.

Engine Mount Pylon Crack

SDR submitted:

While performing the visual inspection of the right hand pylon as per the Bombardier maintenance manual task 000-54-420-500, a crack was detected on the forward engine mount spar. The crack was located on the aft face of the spar at fuselage station FS 625.30, approximately 5 cm inboard of the fuselage skin. The crack measured approximately 9.52 mm and was confirmed with a liquid penetrant inspection.



Crack found in this area, the crack was well hidden and was only confirmed with non-destructive testing

Transport Canada Comments:

This discrepancy was found during a scheduled maintenance task which highlights the importance of the maintenance program that was developed for this aeroplane.

Fuel Scavenge Ejector Failure

SDR submitted:

The left hand (L/H) fuel scavenge ejector message came on at the top of descent at 20 000 feet (Flight Level 200). All engine parameters were normal. Maintenance replaced the L/H fuel scavenge ejector assembly which cleared the defect.

The removed fuel scavenge ejector was disassembled and the internal filter screen was found contaminated and had collapsed.



Fuel Scavenge Ejector Filter screen collapsed due to contamination

Transport Canada Comments:

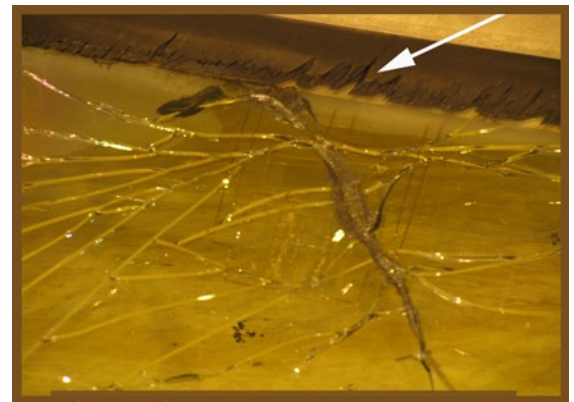
Transport Canada Civil Aviation is advising all CRJ100 operators of this potential condition for the fuel scavenge ejector assemblies.

Failed Windshield

SDR submitted:

During the climb through 35 000 feet, the left-hand windshield started arcing internally at the heater element near the upper right-hand corner of the window. Shortly after this the outer window pane shattered. The flight crew followed the quick-reference-handbook procedures and the aeroplane landed uneventfully at its destination.

The shattered windshield was replaced, making the aeroplane serviceable.



Failed windshield with obvious aerodynamic seal wear

Transport Canada Comments:

Investigative studies have determined that a majority of windshield failures are due to excessive wear of the aerodynamic seal and the ingress of water that can cause delamination and shorting of the heater elements.

The most probable cause of this windshields failure can be seen in the figure below with the upper horizontal aerodynamic seal edge wear which allowed the ingress of water to cause the arcing.

Transport Canada Civil Aviation would like to advise all Bombardier CRJ operators that AMM 56-11-07 is available for the repair of worn windshield aerodynamic seals that could prevent an occurrence as seen here.

Missing Flap Bent Up Trailing Edge (Bute-Door) Roller and Damage Incurred

SDR submitted:

In the climb-out at 4000 feet the crew received a flap fail caution message. The flaps indicated zero however visual inspection showed them slightly extended. The crew continued to their destination at a lower altitude and slower airspeed with an uneventful landing.

Maintenance investigation found one right hand outboard flap trailing edge bute-door roller (3rd from out-board) missing and the flap jammed against the bute-door assembly. It was noted that the affected bute-doors cotter pin (which holds the clevis pin in on which the roller rotates) was damaged.

The roller was replaced and the leading edge of the flap vane repaired. The flaps were rigged and the aeroplane was returned to service.



Flap vane leading edge damage incurred by the missing bute-door roller

Transport Canada Comments:

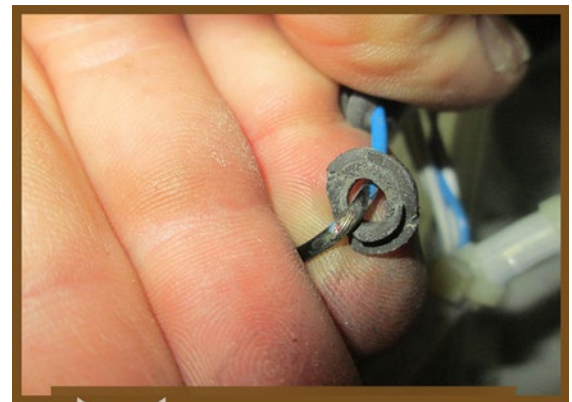
The correct installation of these bute-door rollers can be viewed while conducting a walk-around with the flaps in a deployed position.

Wire Chafing Caused by Friction Through a Grommet

SDR submitted:

During a daily inspection it was noted that the tail logo lights would not illuminate. The maintenance investigation of the system found both bulbs serviceable with no power at the light assemblies. Further investigation revealed a chafed wire through a bulkhead grommet located in the left-hand nacelle.

The wiring was repaired in accordance with the standard practices and the light still would not operate. Further troubleshooting identified that the circuit breaker, although closed, had high internal resistance. The circuit breaker was replaced and the lights checked serviceable.



Grommet and chafed wire

Transport Canada Comments:

This article is a good example of a situation where a hard-fault was found and repaired to subsequently highlight a secondary fault, which was as serious as the primary fault and that also needed to be corrected.

This emphasizes the importance of thorough troubleshooting and functionally checking of the complete system.

Cracked Lower Wing Strut Fitting

SDR submitted:

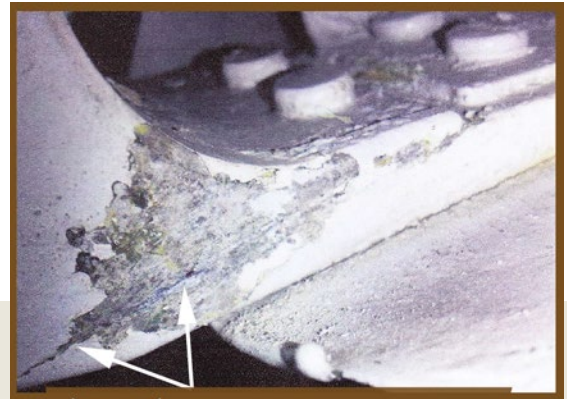
During a scheduled 100 hour inspection, the right hand wing strut lower fitting was found cracked with signs of advanced corrosion.

The wing strut fitting was replaced with a serviceable part to rectify the defect, making the aeroplane serviceable.

Transport Canada Comments:

As stated by the operator, the wing strut fitting's time since new (TSN) was recorded at 16 004.8 hours when the strut fitting was found cracked. The last eddy current inspection on this fitting was completed 18 months prior.

Transport Canada Civil Aviation would like to advise all DHC-2 operators that Maintenance Manual Temporary Revision 2-31, issued in June 2007, now includes a more specific wing strut attachment fittings inspection task, with a set inspection interval at every 100 flight hours.



Wing lower strut fitting crack and extensive corrosion

Dislodged Landing Gear Toggle Switch

SDR submitted:

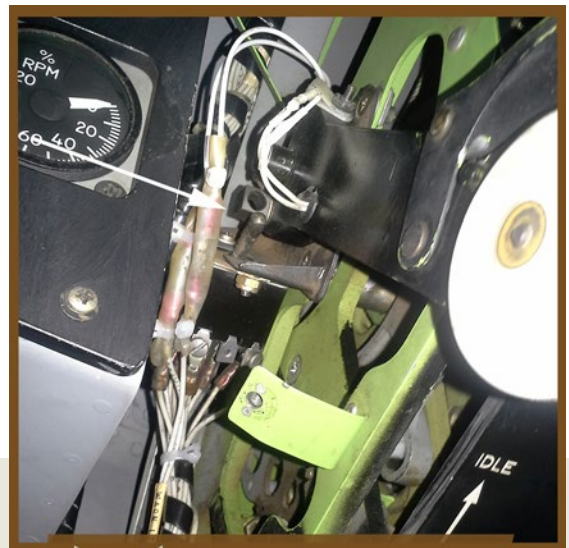
During approach the landing gear would not extend normally and the flight crew had to use manual extension to extend the landing gear. Upon inspection from maintenance, it was discovered that the landing gear toggle switch had become dislodged from the landing gear selector handle.

Maintenance found excessive wear in the toggle switch and replaced it. The system was tested serviceable after a functional gear swing test, making the aeroplane serviceable.

Transport Canada Comments:

The landing gear selector handle has a guide hole that allows for the toggle of the landing gear selector switch. Due to the excessive wear found in the switch, the toggle was able to leave the guide hole.

Transport Canada Civil Aviation is advising all DHC-5 (Buffalo) operators of this potential condition.



Landing gear selector switch with dislodged toggle

Landing gear lever assembly looking from under the center pedestal

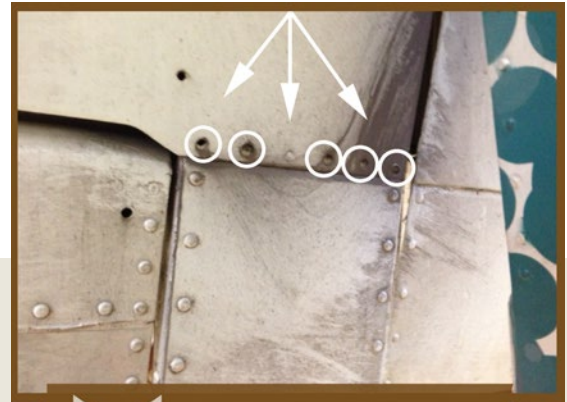
Loose Rivets Found on the Elevator

SDR submitted:

During a heavy maintenance inspection, the inboard trailing edge of the right-hand elevator was found to be loose with several rivet heads pulled through the elevator skin.

Transport Canada Comments:

Loose rivets need to be replaced before they cause more extensive damage or cracking of parts. This is typical damage on aeroplanes with riveted skins.



Several rivet heads pulled through skin

Main Landing Gear Axle Corrosion

SDR submitted:

Corrosion was found on the #1 main landing gear axle. The Goodrich component maintenance manual (CMM) chapter 32-11-03, page 605, states in part "on non-wear surfaces the defects to be polished out must not exceed 0.005 of an inch (0.127 mm) and for wear surfaces defects must not exceed 0.0005 of an inch (0.0127 mm).

Maintenance inspection revealed pitting on non-wear surface and measurements taken with optical micrometer specified deepest pit at .022" (0.5588 mm).



Pitting on surface, measured with optical micrometer, the deepest was 0.022 of an inch (0.5588 mm)

Component maintenance manual limits or repair at 0.005 of an inch (0.127 mm)

Transport Canada Comments:

Landing Gear axles should be inspected for damage when the wheel is changed. Damage can be caused by improper installation, corrosion, bad wheel bearings or improper torque on the axle nut.

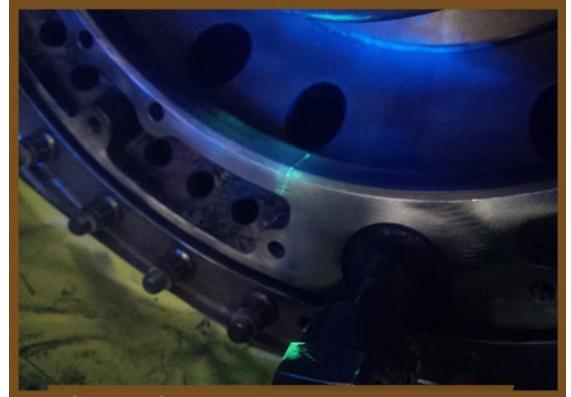
GENERAL ELECTRIC, CFM56

SDR # 20150514005

#5 Bearing Support Cracked

SDR submitted:

During an engine condition monitoring data analysis, a high oil pressure issue was discovered. Subsequent inspection revealed the #5 bearing support cracked. The area was accessed and the bearing housing and the oil inlet removed to facilitate inspection and repair. During a detailed visual inspection (DVI) of the surrounding area, the crack was noted. After a dye penetrant inspection (DPI) to verify the crack, the engine was replaced as there is no on-wing repair/replacement possible.



A bearing support frame during a dye penetrant inspection

Transport Canada Comments:

A database search reveals few other instances of this type of event; nevertheless Transport Canada Civil Aviation would like to raise awareness of this issue and to validate the effectiveness of engine condition monitoring.

Leaking Hydraulic Hoses Post Modification

SDR submitted:

The hydraulic hoses were replaced with new hoses at total time since new 949.9 hours. After landing to refuel, the helicopter pilot noticed a small amount of hydraulic fluid on the right side of the aircraft and notified the engineer. The right hand main gearbox cowling was opened revealing the deck covered in hydraulic oil and the reservoir was noted as very low. The aircraft had undergone a daily inspection that morning and the hydraulic fluid reservoir was at the "max" line. The reservoir was serviced with approximately 300 ml of hydraulic fluid. The aircraft flew 3.9 hours the morning the service difficulty was encountered. A ground run leak check determined that three hydraulic hoses were leaking from under the fire sleeve on each hose. The lines were changed and no leaks were observed. The part numbers of the other hoses are 704A344-122-53A and 704A344-122-51.

Transport Canada Comments:

Immediately after modification (MOD) 074239, multiple cases of leaking hydraulic hoses were reported. Airbus Helicopters subsequently released Information Notice No. 2506-I-29 introducing modification (MOD) 074686. The Information Notice identifies the cause of the leaks and introduces replacement part number hydraulic hoses. Airbus Helicopters has stated that no Service Bulletin will be issued; the new part numbers will be reflected in the Illustrated Parts Catalogue.



CENTRAL – March 2-3 2016 **2016 Manitoba Aviation Symposium**

Victoria Inn
1808 Wellington Ave
Winnipeg, MB
R3H 0G3

For more information: www.camea.ca



WESTERN – March 16-18 2016 **2016 Western Aircraft Maintenance Engineers Association Symposium**

Coast Plaza Hotel
1316 33 St NE
Calgary, AB
T2A 6B6

For more information: www.wamea.com



ATLANTIC – April 6-8 2016 **2016 Annual Atlantic Region Aircraft Maintenance Conference**

Delta Beausejour
750 Main Street
Moncton, New Brunswick
E1C 1E6

For more information: www.AtlanticAME.ca

FAA SPECIAL AIRWORTHINESS INFORMATION BULLETINS (SAIB)

A Federal Aviation Administration (FAA) SAIB is an information tool that alerts, educates, and makes recommendations to the general aviation community. It is non-regulatory information and guidance that does not meet the criteria for an Airworthiness Directive (AD). www.faa.gov/aircraft/safety/alerts/SAIB/

SAIB Number	Make/Company	Subject	Issue Date
HQ-16-05	Fuel	Fuel	11/10/15
CE-16-04	M7 Aerospace LLC	Engine Controls, Power Lever	11/02/15
CE-16-03	Cessna Aircraft Company Textron Aviation Inc.	VERTICAL TAIL – Aft Fin Attachment Fitting	10/09/15
CE-16-02	Allied Ag Cat Productions, Inc.	Engine Mounts: Allied Ag Cat Airplanes with Honeywell TPE331 Conversions; engine mount cracking and recommended visual mount inspections.	10/07/15
NE-16-01	Pratt & Whitney Division	Turbine Section	10/05/15
NM-15-24	Beechcraft Corporation	Landing Gear	09/29/15
CE-14-11R1	Cessna Aircraft Company	Landing Gear; Nose Landing Gear Trunnions	09/23/15
NM-15-23	Beechcraft Corporation	Fuselage - Aerodynamic Fairings - Interference with Nose Landing Gear Doors	09/17/15
CE-15-22	Beechcraft Corporation	Wing Leading Edge Hinge-Pin Corrosion	09/15/15
NE-15-21	Pratt & Whitney Canada Corp. Pratt & Whitney Canada Inc. Wencor, LLC	Fuel Injector Nozzle	08/19/15
SW-15-20	Agusta S.p.A. Airbus Helicopters Bell Helicopter Textron Canada Limited	Air Conditioning System Wiring	08/13/15

EASA SAFETY INFORMATION BULLETIN (SIB)

European Aviation Safety Agency (EASA) SIB is an information tool that alerts, educates, and makes recommendations to the general aviation community. It is non-regulatory information and guidance that does not meet the criteria for an Airworthiness Directive (AD). <http://ad.easa.europa.eu/sib-docs/page-1>

SiB Number	Subject	Issue Date
2015-24	SIRS Magnetic Standby Compasses - Material Degradation of Lead and Socket Assembly	11/10/15
2015-23	Somalia Airspace	10/23/15
2015-17R1	Unreliable Airspeed Indication at High Altitude/ Manual Handling at High Altitude	10/16/15
2015-16R1	Simferopol Flight Information Region (FIR)	10/16/15
2015-02R2	Pakistan Airspace	10/16/15
2014-26R1	Restrictions Concerning the Airspace of Afghanistan	10/16/15
2015-05R3	Yemeni Airspace	10/13/15
2015-21	Notification of Unapproved Parts	10/09/15
2015-22	Caspian Sea, Iran and Iraq Airspace – Launch of Missiles from Caspian Sea to Syria	10/09/15
2015-18	Potential Adverse Effect of Anti-Icing Fluids during Take-off	10/08/15
2015-20	Possible Disruption of Instrument Landing System Signal	10/07/15
2015-19	Transport of Lithium Batteries as Cargo by Air	10/05/15
2006-01R1	Lycoming (formerly Textron Lycoming) and Continental Motors Inc. (formerly Teledyne Continental)	09/22/15
2015-15	Large Transport Aeroplanes – Fan Cowl Door Loss Prevention	08/31/15
SAFO15008	IAE V2500 Engines – Fan Blades Overhauled outside Blade Repair Limits	08/20/15
2014-07R1	Unexpected Autopilot Behaviour on Instrument Landing System (ILS) Approach	08/12/15

SERVICE DIFFICULTY REPORTS (SDR)

LEGEND

JASC: Joint Aircraft System Code number defining assembly/system/components

SDR No.: Transport Canada Civil Aviation (TCCA) assigned SDR control number — please quote in any correspondence or inquiries

Region (RGN): TCCA region of SDR submitter:

PAC = Pacific

VAR = Various

NCR = Ottawa (Headquarters)

ONT = Ontario

PNR = Prairie and Northern

ATL = Atlantic

QUE = Quebec

AIRCRAFT

AERO COMMANDER

Make/Model	Jasc	Part Name	Part Number	Part Condition	SDR No.	RGN
690A	7720	INTERSTAGE TURBINE TEMPERATURE INDICATOR	8J05681	ERRATIC	20150708007	PNR

AEROSPATIALE

Make/Model	Jasc	Part Name	Part Number	Part Condition	SDR No.	RGN
ATR 42 300	2997	BLUE HYDRAULIC PUMP WIRING		WORN/CHAFFED	20150916017	PNR

AEROSPATIALE HC

Make/Model	Jasc	Part Name	Part Number	Part Condition	SDR No.	RGN
AS 350B2	2435	DRIVESHAFT	150SG11032	FLAWED	20150902007	PAC
AS 350B2	2910	HYDRAULIC HOSE	704A34412271A	LEAKING	20150727023	PAC
AS 350B2	3300	POWER SUPPLY	356H2802	USERVICEABLE	20150901010	ONT
AS 350B2	6300	FLEX COUPLING	350A35105901	CRACKED	20150813003	PAC
AS 350B3	2590	SWING FRAME WELDMENT	23511700	SCRAP NO REPAIRS	20150914006	PNR
AS 350B3	2910	PULLEY	350A35109222	WORN	20150826004	PAC
AS 350B3	6300	RING GEAR	350A32012000	SCRAP	20150805001	QUE
AS 350B3	7300	LOCK		MALFUNCTION	20150828012	PAC
AS 350BA	2910	HYDRAULIC RETURN HOSE	704A34412255	LEAKING	20150925012	PNR
AS 350BA	6230	BOLT	22201BE080034L	LOSS OF TORQUE	20150721003	QUE
AS 355NP	7297	GUARD	130KU02B6AA	FAULTY	20150819004	ONT

AGUSTA

Make/Model	Jasc	Part Name	Part Number	Part Condition	SDR No.	RGN
AW139	2621	ENGINE FIRE BOTTLE	3G2620V00131	NEW	20150806001	ONT
AW139	6230	CLAMP	NAS192208753H	DEPARTED	20150908009	ONT
AW139	6320	MAIN GEARBOX ASSEMBLY	4G6320A00132	CHIP LIGHT	20150825007	ONT
AW139	6720	Y9-Y10 BELLCRANK	3E6722A01236	DISBONDED	20150914004	ONT

AIR TRACTOR

Make/Model	Jasc	Part Name	Part Number	Part Condition	SDR No.	RGN
AT 502B	3220	TAILWHEEL LOCK CABLE	711951	SLACK	20150727018	PNR
AT 802A	3246	FITTING SUPPORT	13A02070004	GOOD	20150716003	PAC
AT 802A	3246	HARNESS	1001799	POOR/BROKEN	20150716004	PAC
AT 802A	5610	WINDOW	102112	BROKEN	20150713016	PAC

AIRBUS

Make/Model	Jasc	Part Name	Part Number	Part Condition	SDR No.	RGN
A310 304	2913	ENGINE DRIVEN HYDRAULIC PUMP	3508807	CRACKED	20150810001	QUE
A310 304	5522	RIGHT HAND ELEVATOR	A5527600100051	DELAMINATED	20150820009	QUE
A319 112	2131	CABIN PRESSURE CONTROLLER	2079102AB	FAILED	20150825012	QUE
A319 114	0	FLIGHT MANAGEMENT COMPUTER	B546CAM0104	FAILED	20150916008	QUE
A319 114	1230	HYDRAULIC SYSTEM		LOW FLUID	20150924004	QUE
A319 114	2310	HIGH FREQUENCY TRANSCIVER	8220330020	FAILED	20150803002	QUE
A319 114	2913	HYDRAULIC PUMP	3031863001	LEAKING	20150831002	QUE
A319 114	3230	SENSOR	893301	DEFECTIVE	20150831005	QUE
A319 114	3251	NOSE WHEEL STEERING FEEDBACK SENSOR	E21336000	FAILED	20150818007	QUE
A319 114	3610	HIGH PRESSURE REGULATING VALVE	6713D060000	FAILED	20150929004	QUE
A320 211	0	PARKING BRAKE SELECTOR	C24703003	LOCKED	20150923012	QUE
A320 211	2131	CABIN PRESSURE CONTROLLER	90221570210	FAILED	20150805007	QUE
A320 211	2420	GENERATOR CONTROL UNIT	740120B	FAILED	20150731005	QUE
A320 211	2910	HYDRAULIC MANIFOLD VALVE	ZCV671	LEAKING	20150706002	QUE
A320 211	2913	HYDRAULIC PUMP	623977	FAILED	20150715001	QUE
A320 211	3242	HOSE ASSEMBLY	201042821	LEAKING	20150821006	QUE
A320 214	2910	HYDRAULIC PUMP	3031863001	LEAKING	20150706004	QUE
A321 211	2161	AIR CYCLE MACHINE	1263A000003	FAILED	20150924010	QUE
A321 211	2300	HANDSET-CABIN	890107232	BURNED	20150714006	QUE
A321 211	2590	AUDIO JACK		FAILED	20150915002	QUE
A321 211	2800	FUEL SYSTEM		SPILL	20150703006	QUE
A321 211	3240	BRAKE		MALFUNCTION	20150803006	QUE
A321 211	3830	VACUUM SYSTEM CONTROLLER	14404010	FAILED	20150831003	QUE
A321 211	4920	AUXILIARY POWER UNIT	49200041	FAILED	20150706003	QUE
A330 243	2121	FAN	VR410004	FAILED	20150720014	QUE
A330 343	3233	LINE	201042193	LEAKING	20150909006	QUE

AIRBUS HELICOPTERS

Make/Model	Jasc	Part Name	Part Number	Part Condition	SDR No.	RGN
EC 135T2PLUS	6320	CHIP DETECTOR	1D17721	WEAK	20150713023	PNR

BAE - (RAYTHEON)

Make/Model	Jasc	Part Name	Part Number	Part Condition	SDR No.	RGN
HAWKER 850XP	5712	RIB		CORRODED	20150703001	QUE
HAWKER 850XP	5712	RIB		CORRODED	20150703002	QUE

BAE - UK

Make/Model	Jasc	Part Name	Part Number	Part Condition	SDR No.	RGN
3112	7720	CANNON PLUG	1KR5P	HARDENED	20150727015	ONT

BEECH

Make/Model	Jasc	Part Name	Part Number	Part Condition	SDR No.	RGN
1900C	2797	CORD - COILED	903840291	USED	20150817022	PNR
1900D	2110	AIR CYCLE MACHINE	7756355	LEAKING	20150925016	ATL
1900D	2397	WIRE		SHORTED	20150922008	ATL
1900D	2420	RELAY	1093810021	UNSERVICEABLE	20150724006	ATL
1900D	2750	WIRE		CORRODED	20150714001	ATL
1900D	3200	HOSE ASSEMBLY	1013880175	RUPTURED	20150713011	PNR
1900D	3200	HYDRAULIC POWER PACK	11438800013	NOISY/STRAINING	20150710004	ATL
1900D	3231	WIRES		CHAFFED	20150713020	ATL
1900D	3260	BULB	951F04	BURNT	20150708008	ATL
1900D	5230	DOOR HANDLE ASSEMBLY	11451403529	CRACKED	20150914011	ATL
1900D	5297	ACTUATOR SWITCH	JV20	NOT ADJUSTED	20150915006	ATL
1900D	5700	RIB		CORRODED	20150720009	ATL
1900D	5711	SPAR		CORRODED	20150720003	ATL
1900D	5711	SPAR		DAMAGED	20150720010	ATL
1900D	5711	TUB FITTING		CRACKED	20150811003	ATL
200	2121	BLADE FAN	219012	BLADE SEPARATION	20150710020	ONT
200	3242	BRAKE HOSE ASSEMBLY	MS287414210	INCORRECT	20150710022	PNR
200	3423	MAGNETIC COMPASS	5053445315	LEAKING	20150909004	PNR
200	5700	WING BOLT	817841644	CRACKED	20150821003	PAC
300	2435	STARTER/GENERATOR	23085001	UNSERVICEABLE	20150720007	PNR
300	3222	UPPER TORQUE KNEE	5081003210	CRACKED/BROKEN	20150807009	PNR
A100	2710	AILERON TRIM CABLES	NAS302671964	CORRODED	20150903008	ONT
A100	2750	BONDING STRAP	MS250832AA6	CRUSHED	20150708004	ONT
A100	3416	ENCODING ALTIMETER	51922702031	SERVICEABLE	20150924009	ONT
B100	2730	TORQUE TUBE		CRACKED	20150831006	QUE
B100	5320	CHANNEL	978100124	CRACKED	20150716006	ONT
B200	2100	TUBE		PIN HOLE	20150925014	ONT
B200	2752	FLAP ACTUATOR	1295210511	INCORRECT PART	20150710021	PNR
B200	3100	VALVE	1013810009	FAULTY	20150814010	PNR
B200	3233	ACTUATOR		STIFF	20150903004	PNR
B200	3320	TRANSISTOR	MJ11016	BURNT	20150731007	PNR
B200	3400	GYRO	6226136002	FAULTY	20150714008	PNR
B200	5730	COVER ASSEMBLY	5012010110	BROKEN	20150702008	ONT
B300	5210	DOOR LATCH BOLT	1014084	FRACTURED	20150821008	PAC
B300C	3400	PRIMARY FLIGHT DISPLAY		FAILED	20150807007	ATL
C90A	3510	LOCK MASK ASSEMBLY	449039	MISSING	20150923006	ONT

BELL TEXTRON - CAN

Make/Model	Jasc	Part Name	Part Number	Part Condition	SDR No.	RGN
206B	6240	HORN	SC628	FAILED	20150812004	PAC
206B	6320	BEARING	206040032001	CHIP	20150827011	ONT
206L 4	6330	LINK ASSEMBLY	206033554101	INCORRECTLY INSTALLED	20150706011	QUE
206L 4	6700	PITCH LINK ASSEMBLY	206010360005	LOOSE	20150706012	QUE
407	5300	ROOF PANEL ASSEMBLY	407030401111A	CRACKED	20150924013	PAC
407	5302	RIGHT HAND UPPER SUPPORT	407023800128	CRACKED	20150923015	PNR
407	5512	HORIZONTAL STABILIZER	407023801109	CRACKED	20150820013	PAC
407	6210	MAIN ROTOR BLADE	407015001129	DEBOND	20150817015	ATL
407	6300	NUT	406040543105	UNSERVICEABLE	20150918002	ONT
407	6500	CAP	406040509101	CRACKED	20150918001	ONT
429	6220	SHEAR BEARING	429310002101	UNSERVICEABLE	20150914008	ONT
429	6720	LINK	429012112103	BROKEN	20150824009	QUE
429	7922	ENGINE OIL BYPASS VALVE	726800	CRACKED	20150914009	ONT
430	6220	SHEAR RESTRAINT	430310101107	DEBONDED	20150827010	ONT

BELL TEXTRON - USA

Make/Model	Jasc	Part Name	Part Number	Part Condition	SDR No.	RGN
205A 1	2910	HYDRAULIC HOSE	70012J220W234	LINE SEPERATION	20150713024	PNR
212	3000	WIPER MOTOR	XW20345	SHEARED	20150818010	PNR
212	6300	BOOT	212040176101	TORN	20150813007	PAC
212	6720	TAIL ROTOR CONTROL	209011712101	DAMAGED	20150922013	PNR
212	7321	AUTOMATIC FUEL CONTROL	324473514	UNSERVICEABLE	20150805008	PAC
212	8310	BOOT	212040176101	TORN	20150814006	PAC
412	6300	BOOT	212040176101	DISINTEGRATED	20150813004	PAC
412	6320	SCREW	MS3526660	SERVICEABLE	20150826001	PNR
412EP	6220	BEARING	412010106101	SEPERATED	20150709001	PNR

BELLANCA

Make/Model	Jasc	Part Name	Part Number	Part Condition	SDR No.	RGN
14 13 2	5711	FORWARD AND AFT WING		CRACKED ROTTED	20150923004	PAC

BOEING

Make/Model	Jasc	Part Name	Part Number	Part Condition	SDR No.	RGN
727 225	3230	PULLEY BRACKET	69219846	BROKEN	20150805005	ONT
737 2B6C	2560	EMERGENCY LOCATOR TRANSMITTER REMOTE SWITCH	34561904	STUCK	20150902004	QUE
737 2R4C	2751	POSITION INDICATOR		FAILED	20150729007	ONT
737 73A	3810	HOUSING BODY	288237	HOLE	20150908005	PNR
737 76N	2760	GROUND SPOILER ACTUATOR	65C268643	UNSERVICEABLE	20150916009	PNR
737 76N	2897	HARNES		SHORTED	20150807005	PNR
737 7CT	2741	STABILIZER TRIM MOTOR	6355C000101	UNSERVICEABLE	20150908013	PNR
737 7CT	3244	MAIN TIRE	261230102	UNSERVUCEABLE	20150914013	PNR
737 8CT	2821	FUEL FILTER DIFFERENTIAL PRESSURE SWITCH	QA07995	FAILED	20150707006	PNR
737 8HX	3610	DUCT ASSEMBLY	213A150173	CRACKED & BLOWN	20150811002	ONT
767 333	3020	NACELLE ANTI-ICE VALVE	2790583108	FAILED	20150729003	QUE
767 333	3260	LANDING GEAR		DISAGREEMENT	20150803007	QUE

Make/Model	Jasc	Part Name	Part Number	Part Condition	SDR No.	RGN
767 333	3830	LAVATORY		INOP	20150817012	QUE
767 375	2530	COFFEMAKER UNIT	3510001601	FAILED	20150824003	QUE
767 375	2721	RUDDER CONTROL		NO FAULT FOUND	20150909007	QUE
767 375	2750	FLAP SYSTEM		FAILED	20150730010	QUE
767 375	2781	OUT BOARD SENSOR		CONTAMINATED	20150908002	QUE
767 38E	1497	PLASTIC COVER	BS0607701	DAMAGED	20150929003	QUE
767 3Q8	2710	AILERON SYSTEM		FAILED	20150714004	QUE
777 233LR	3431	RADAR		FAILED	20150807002	QUE
787 8	2150	RAM AIR FAN	7010136H09	BROKEN	20150708003	QUE
787 8	2300	COMMUNICATION SYSTEM		FAILED	20150715004	QUE
787 8	2741	HORIZONTAL STABILIZER TRIM ACTUATOR	C99145006	LEAKING	20150917002	QUE
787 9	3230	ACTUATOR MAIN LANDING GEAR DRAG BRACE	282971	FAILED	20150915005	QUE

BOMBARDIER

Make/Model	Jasc	Part Name	Part Number	Part Condition	SDR No.	RGN
BD 100 1A10	0	SAGE 2 LOW PRESSURE TURBINE BLADE	30356021	BROKEN	20150922006	QUE
BD 100 1A10	2400	ELECTRICAL SYSTEM	SAD0001	CHAFING	20150909013	QUE
BD 100 1A10	2750	FLAP CARRIAGE	1005751350	CHAFED	20150825013	PNR
BD 100 1A10	3260	PROXIMITY SENSOR ELECTRONIC UNIT		FAILED	20150722005	QUE
BD 100 1A10	3260	PROXIMITY SENSOR ELECTRONIC UNIT	302270402	FAILED	20150707003	QUE
BD 700 1A10	2400	GENERATOR CONTROL UNIT	GL51131061	FAILED	20150831001	QUE
BD 700 1A10	2540	SINK		LEAKING	20150922004	QUE
BD 700 1A10	2913	SHOCK MOUNT RODS	275561	FRACTURED	20150710019	QUE
BD 700 1A10	3200	SENSOR	GW31220019	FAULTY	20150721002	QUE
BD 700 1A10	3410	ADAPTIVE FLIGHT DISPLAY	8222332100	SOFTWARE ISSUE	20150724007	QUE
BD 700 1A10	3457	GLOBAL POSITIONING SYSTEM		LOST SIGNAL	20150922005	QUE
BD 700 1A10	3500	OVERBOARD DISCHARGE INDICATOR	179001	FAULTY	20150916001	QUE
BD 700 1A10	5200	BULKHEAD MOLDING	7002523186913	NEW	20150924012	QUE
BD 700 1A11	2400	DIRECT CURRENT POWER CENTER	GL51231011	NEW	20150716005	QUE
BD 700 1A11	3240	SENSOR		FAULTY	20150814008	ONT
CL600 2B19 (RJ100)	0	CENTER POST LEFT HAND LOWER FIT	601R332371	CRACKED	20150916012	QUE
CL600 2B19 (RJ100)	0	FRAME	601R320004	CORRODED	20150922010	QUE
CL600 2B19 (RJ100)	0	FRAME 605	601R3602627	CORRODED	20150922009	QUE
CL600 2B19 (RJ100)	0	PRESSURE BOX	601R31060	CRACKED	20150929006	QUE
CL600 2B19 (RJ100)	2100	AIR CYCLE MACHINE	78279015	FAILED	20150814004	QUE
CL600 2B19 (RJ100)	2421	AIR DRIVEN GENERATOR CONTROLER	820465	DEPLOYED	20150728012	QUE
CL600 2B19 (RJ100)	2750	FLAP ELECTRONIC CONTROL UNIT		FAILED	20150728011	QUE
CL600 2B19 (RJ100)	2751	BRAKE AND POSITION SENSING UNIT	855D10013	FAILED	20150904007	ATL
CL600 2B19 (RJ100)	2752	FLEX SHAFT	601R93106405	BROKEN	20150825003	QUE
CL600 2B19 (RJ100)	2752	INBOARD FLAP ACTUATOR	852D10025	OVERHEATED	20150824011	ATL
CL600 2B19 (RJ100)	2761	FLEX DRIVE		DAMAGED	20150911009	QUE
CL600 2B19 (RJ100)	2917	NOSE LANDING GEAR PRIORITY VALVE	4622	FAILED	20150809002	QUE

Make/Model	Jasc	Part Name	Part Number	Part Condition	SDR No.	RGN
CL600 2B19 (RJ100)	3220	NOSE LANDING GEAR DOWN-LOCK ACTUATOR	16400105	UNSERVICEABLE	20150904003	QUE
CL600 2B19 (RJ100)	3230	HANDLE ASSEMBLY	601R850873	FAILED	20150724002	PNR
CL600 2B19 (RJ100)	3230	LEFT HAND MAIN LANDING GEAR DRESSED ASSEMBLY	17002113	FAILED	20150714003	QUE
CL600 2B19 (RJ100)	3230	NOSE LANDING GEAR SELECTOR VALVE	750006000	FAILED	20150728009	QUE
CL600 2B19 (RJ100)	3230	SELECTOR VALVE		FAILED	20150721001	QUE
CL600 2B19 (RJ100)	3233	SIDE STAY ACTUATOR	17008115	FAILED	20150713017	QUE
CL600 2B19 (RJ100)	3243	BRAKE CONTROL VALVE	HP13332005	FAILED	20150901012	ATL
CL600 2B19 (RJ100)	3610	BLEED SHUT OFF VALVE	32895902	FAILED	20150810003	ATL
CL600 2B19 (RJ100)	3610	ISOLATION VALVE		LEAKING	20150807006	ATL
CL600 2B19 (RJ100)	4920	AUXILIARY POWER UNIT	38004883	DAMAGED	20150908006	QUE
CL600 2B19 (RJ100)	5320	AIR CYCLE MACHINE MOUNT	601R951521	CRACKED	20150909002	ATL
CL600 2B19 (RJ100)	5610	CAPTAIN WINDSHIELD	NP1393219	SHATTERED	20150809001	QUE
CL600 2B19 (RJ100)	5610	WINDOW	NP1393229	CRACKED	20150706001	ATL
CL600 2B19 (RJ100)	5730	DOOR AND SKIN PLANK	601R100453	CORRODED	20150915015	QUE
CL600 2B19 (RJ100)	5730	LOWER WING PLANK	601R100462	CRACKED	20150908007	QUE
CL600 2B19 (RJ100)	7230	LEFT HAND ENGINE	CF343B1	DAMAGED	20150908014	ONT
CL600 2C10 (RJ700)	0	LEFT HAND OUT BOARD LOWER WING PLAN	CC670100433	CORRODED	20150921007	QUE
CL600 2C10 (RJ700)	0	LEFT HAND WINDSHIELD		CRACKED	20150916014	QUE
CL600 2C10 (RJ700)	0	RIGHT HAND OUTBOARD LOWER WING PLANK	CC670100434	CORRODED	20150921006	QUE
CL600 2C10 (RJ700)	2710	CABLE ASSEMBLY	BA6709321037	CORRODED	20150710007	QUE
CL600 2C10 (RJ700)	2752	FLAP	CC67014500	INOP	20150908011	QUE
CL600 2C10 (RJ700)	2800	CANISTER ASSEMBLY	CC670129301	CRACKED	20150915010	QUE
CL600 2C10 (RJ700)	2926	SEAL	7217FS954P17	WEARING	20150902006	QUE
CL600 2C10 (RJ700)	3231	NOSE LANDING GEAR AFT DOOR ASSEMBLY	CC670330983	MISSING	20150807001	QUE
CL600 2C10 (RJ700)	5270	PASSENGER DOOR PROXIMITY SWITCH	840534	BURNT	20150710003	QUE
CL600 2C10 (RJ700)	5300	FRAMES	SH67031357	CORRODED	20150909014	QUE
CL600 2C10 (RJ701)	5610	WINDSHIELD (LEFT HAND)	NP139321X	CRACKED	20150720002	QUE
CL600 2D15 (705)	3020	ANTI ICE VALVE	54011485	FAILED	20150721006	ATL
CL600 2D15 (705)	3240	BRAKE TEMP PROBE	6007300	UNSERVICEABLE	20150817017	ATL
CL600 2D24 (RJ900)	0	AFT DRAG ANGLE	AV67021186	CRACKED	20150916011	QUE
CL600 2D24 (RJ900)	0	SKIN PANELS	CC6901511634	CORRODED	20150916010	QUE
CL600 2D24 (RJ900)	0	WINGLET LOWER SKIN PANEL	CC690151164	CORRODED	20150916013	QUE
CL600 2D24 (RJ900)	2100	AIR CYCLE MACHINE	GG67095009	DEFECTIVE	20150903003	QUE
CL600 2D24 (RJ900)	2450	TERMINAL LUG		BURNT	20150825005	QUE
CL600 2D24 (RJ900)	2497	STARTER MOTOR	27045542	UNSERVICEABLE	20150801001	PNR
CL600 2D24 (RJ900)	2612	SMOKE DETECTOR		NO FAULT FOUND	20150903002	QUE
CL600 2D24 (RJ900)	2700	SPOILER ACTUATOR LINK	CC67011001	BROKEN	20150928004	QUE
CL600 2D24 (RJ900)	2720	POWER CONTROL UNIT	513001	BROKEN	20150824013	QUE
CL600 2D24 (RJ900)	2752	SKEW DETECTOR	5913163	FAILED	20150902002	QUE
CL600 2D24 (RJ900)	2761	POWER CONTROL UNIT	5120011	MALFUNCTIONNED	20150910010	QUE
CL600 2D24 (RJ900)	3213	MAIN LANDING GEAR		FAILED	20150702003	QUE
CL600 2D24 (RJ900)	3242	BRAKE ASSEMBLY	90001201	DEFECTIVE	20150909011	QUE
CL600 2D24 (RJ900)	3242	BRAKE ASSEMBLY	900012011	SEIZED	20150804002	PNR
CL600 2D24 (RJ900)	3620	CONNECTOR MT138P1		DEFECTIVE	20150902005	QUE
CL600 2D24 (RJ900)	5311	FRAME FOOT		CORRODED	20150909015	QUE
CL600 2D24 (RJ900)	5610	FIRST OFFICER SIDE WINDOW	NP139332	CRACKED	20150710001	QUE

Make/Model	Jasc	Part Name	Part Number	Part Condition	SDR No.	RGN
CL600 2D24 (RJ900)	5610	RIGHT HAND SIDE WINDOW	NP13932212	CRACKED	20150727028	QUE
CL600 2D24 (RJ900)	5610	RIGHT HAND WINDSHIELD		CRACKED	20150714011	QUE
CL600 2E25 (RJ1000)	2120	AIR CYCLE MACHINE	3478A010001	FAILED	20150902001	QUE
CL600 2E25 (RJ1000)	2120	AIR CYCLE MACHINE	3478A010001	FAILED	20150707007	QUE
DHC 8 400	2460	DIRECT CURRENT CONTROL PANEL		FAULTY	20150927010	QUE
DHC 8 400	3452	TRANSPONDER		NO FAULT FOUND	20150914001	QUE
DHC 8 402	2913	ENGINE DRIVEN PUMP	6617304	UNSERVICEABLE	20150920001	QUE

CANADAIR

Make/Model	Jasc	Part Name	Part Number	Part Condition	SDR No.	RGN
CL215 6B11(CL215T)	2730	FITTING	215T926442	CRACKED	20150730015	PAC
CL215 6B11(CL215T)	2730	HYDRAULIC LINE	215T7507018	FLARE END DAMAGE	20150707005	PAC
CL215 6B11(CL215T)	5514	DRAG ANGLE	215T2120731	CRACKED	20150826003	PAC
CL215 6B11(CL215T)	5740	DRAG ANGLE	21530031	CRACKED	20150722009	PAC
CL215 6B11(CL415)	2100	RESISTOR	ES6301414	BURNED/DAMAGED	20150811010	QUE
CL215 6B11(CL415)	2900	HYDRAULIC		LEAK	20150713021	QUE
CL215 6B11(CL415)	5414	LATCH COVER	87140482007	MISSING	20150722008	QUE
CL600 2B16(601 3R)	3244	TIRE	256K433	FAILED	20150730013	QUE
CL600 2B16(604)	2530	RIBBON HEATER	304318T	OVERHEATED	20150828010	QUE
CL600 2B16(604)	2742	HORIZONTAL STABILIZER TRIM ACTUATOR	84543	FAILED	20150703005	PNR
CL600 2B16(604)	3160	CONTROL DISPLAY UNIT	8221485402	OVERHEATED	20150806004	QUE

CESSNA

Make/Model	Jasc	Part Name	Part Number	Part Condition	SDR No.	RGN
152	7120	ENGINE MOUNT		CRACKED	20150727021	ONT
172P	7414	MAGNETO	4371	TIMING	20150707008	PNR
172S	2731	TRIM TAB HINGE	53200145	LOOSE	20150703009	PNR
208	7600	STOP SPRING	SL60063	BROKEN	20150904005	PAC
208B	3010	LINE ASSEMBLY	260106722	WORN	20150904008	ATL
210L	3200	POWER PACK	12808451	FAULTY	20150727016	PNR
210L	5510	RIB		CRUSHED	20150716008	PNR
525	2100	COMPRESSOR DRIVE MOTOR	11341041	MOTOR BURNT	20150706010	PAC
525A	2120	COMPRESSOR MOTOR BRUSHES	12511716	WORN	20150730012	PNR
560	5510	RIBS (10-12)		CRACKED	20150727013	ONT
560(ENCORE)	3230	TORQUE TUBE WELD ASSEMBLY	55421029	CRACKED	20150903010	PNR
A188B	3210	GEAR SPRING	16410077	UNSERVICEABLE	20150827002	PNR
U206E	2810	FASTENER	295055	FELL OFF	20150716007	PNR
U206G	2731	SPROCKET	12601131	FAILURE	20150803001	PNR

CHAMPION

Make/Model	Jasc	Part Name	Part Number	Part Condition	SDR No.	RGN
7GCB	0	CYLINDER ASSEMBLY	3668	UNTHREADED	20150916003	ONT

CONVAIR - CAN

Make/Model	Jasc	Part Name	Part Number	Part Condition	SDR No.	RGN
340	2730	ELEVATOR HINGE TAB ASSEMBLY	90152081	BROKEN	20150908004	PNR
340	2750	SOLENOID		UNSERVICEABLE	20150806006	PAC
340	3231	ROD END	24031504050	BROKEN	20150703014	PAC
340	5730	RIGHT HAND WING SKIN		CRACK IN SKIN	20150727025	PAC

DASSAULT

Make/Model	Jasc	Part Name	Part Number	Part Condition	SDR No.	RGN
FALCON 2000EX	3020	PRESSURE SWITCH	01ND362047	FAULTY	20150929014	QUE

DEHAVILLAND-CAN

Make/Model	Jasc	Part Name	Part Number	Part Condition	SDR No.	RGN
DHC 3	2730	RIGHT HAND ELEVATOR SERVO TAB	C3TE1312	DESTROYED	20150904011	PAC
DHC 6 300	3250	STEERING COLLAR	7116111	BROKEN	20150723004	QUE
DHC 8 101	3241	DUAL ANTI SKID VALVE #2	36671	CRACKED	20150925015	QUE
DHC 8 102	2422	CAPACITOR	019015A	BURNT	20150924011	ATL
DHC 8 102	2422	INVERTER	DH103024600C	OVERHEATED	20150902003	ATL
DHC 8 102	2422	INVERTER	DH103024600C	OVERHEATED	20150927009	ATL
DHC 8 102	5230	MID BEAM	85230421	CRACKED	20150904001	ATL
DHC 8 102	5315	STRINGER	85330506132	CORRODED	20150831009	ATL
DHC 8 102	6140	BETA BACKUP SWITCH	V319	INTERNAL SHORT	20150714013	ATL
DHC 8 102	7197	DIODE	MWSD20E1	BURNT	20150824006	ATL
DHC 8 106	2520	OVEN CONNECTOR	CA16707	SHORTED	20150729006	QUE
DHC 8 201	3030	PITOT TUBE		MALFUNCTION	20150717002	QUE
DHC 8 301	2100	PRECOOLER		CRACKED	20150708006	PNR
DHC 8 301	2730	PULLEY		SEIZED	20150921008	ATL
DHC 8 301	3230	SELECTOR VALVE		FAULTY	20150804003	ATL
DHC 8 311	2750	#5 RIGHT HAND FLAP TRACK	85780012014	CORROSION	20150707001	ATL
DHC 8 311	2997	CANNON PLUG RECEPTACLE		BROKEN	20150722006	PNR
DHC 8 311	5230	BRACKET	85332353103	BROKEN	20150914003	ATL
DHC 8 311	5350	RADOME		BIRD STRIKE	20150928001	ATL
DHC 8 314	2565	NITROGEN BOTTLE VALVE		LEAKING	20150824014	PNR
DHC 8 314	3230	ACTUATOR	82910016009	UNSERVICEABLE	20150709003	QUE
DHC 8 314	3246	MAIN WHEEL AND TIRE ASSEMBLY	83210302059	DETACHED	20150910009	QUE
DHC 8 314	3251	STEERING MANIFOLD	86005	BROKEN	20150703003	QUE
DHC 8 314	3414	AIRSPPEED INDICATOR	211401150	LEAKING	20150923002	QUE
DHC 8 314	3416	ALTIMETER		FAULTY	20150923001	QUE
DHC 8 314	5220	DOOR SEAL	85220282001	DEFLATED	20150723003	QUE
DHC 8 314	7312	FUEL/OIL HEATER	10839F	FAULTY	20150714012	ONT
DHC 8 400	2100	RAM AIR INLET CHECK VALVE	8209482	DAMAGED	20150713013	QUE
DHC 8 400	2700	BUSHING PLAIN PRESS FIT	NAS754007	NOT INSTALLED	20150706009	QUE
DHC 8 400	2820	CHECK VALVE		DAMAGED	20150812002	ONT
DHC 8 400	2820	EJECTOR PUMP		BROKEN	20150707002	QUE
DHC 8 400	2913	ENGINE DRIVEN PUMP	6617303	FAILED	20150828002	QUE
DHC 8 400	2913	ENGINE DRIVEN PUMP	6617303	LEAKING	20150824007	QUE
DHC 8 400	3060	BRUSH BLOCK		WORN	20150817019	QUE
DHC 8 400	3200	LANDING GEAR CONTROL PANEL		FAILED	20150713018	QUE

Make/Model	Jasc	Part Name	Part Number	Part Condition	SDR No.	RGN
DHC 8 400	3200	NOSE LANDING GEAR DOOR FRAME	85312193	BENT	20150812003	QUE
DHC 8 400	3232	NOSE LANDING GEAR DOOR ACTUATOR	47830	INTERNAL LEAK	20150720001	QUE
DHC 8 400	3234	SECONDARY SELECTOR VALVE	10018310	FAILED	20150828008	QUE
DHC 8 400	3246	MAIN LANDING GEAR WHEEL	4151171	BEARING FAILED	20150904004	QUE
DHC 8 400	3250	ROTARY VARIABLE DIFFERENTIAL TRANSDUCER		OUT OF ADJUSTMENT	20150713014	QUE
DHC 8 400	3250	ROTARY VARIABLE DIFFERENTIAL TRANSDUCER	471843	OUT OF RIGGING	20150805004	QUE
DHC 8 400	3260	BULB	860TS09Y00	BURNT	20150713010	QUE
DHC 8 400	3297	NOSE LANDING GEAR LOCK SENSOR		OUT OF RIG	20150923005	QUE
DHC 8 400	5200	DOOR HANDLE		OPEN	20150720006	QUE
DHC 8 400	5230	DOOR		NOT CLOSED	20150828011	QUE
DHC 8 402	2100	OVERTEMP SWITCH	8209083	FAILED	20150824001	PNR
DHC 8 402	2215	ROLL ACTUATOR	C18117AA	NOT DISENGAGING	20150828006	ATL
DHC 8 402	2434	DIRECT CURRENT STARTER GENERATOR	11521063	FAILED	20150825001	PNR
DHC 8 402	2435	SEALED BEARING	400SG1052913	UNSERVICEABLE	20150916007	ATL
DHC 8 402	2435	STARTER DRIVE SHAFT		NEW	20150825011	PNR
DHC 8 402	2520	SEAT FRAME		CORRODED	20150707004	ATL
DHC 8 402	2710	ROLL ACTUATOR	C18117AA	NOT DISENGAGING	20150827003	ATL
DHC 8 402	2721	RUDDER TRIM ACTUATOR	3996001007	FAILED	20150825004	PNR
DHC 8 402	2900	O-RING	NAS16128A	DAMAGED	20150706007	PNR
DHC 8 402	2910	ENGINE DRIVEN PUMP		FAILED	20150729008	QUE
DHC 8 402	2910	HYDRAULIC PIPE	82974335001003	DAMAGED	20150722001	QUE
DHC 8 402	2913	ENGINE DRIVEN PUMP	6617304	FAILED	20150708001	QUE
DHC 8 402	2913	ENGINE DRIVEN PUMP	6617303	FAILED	20150713001	ONT
DHC 8 402	2913	PUMP HYDRAULIC	6617304	FAILED	20150811009	ATL
DHC 8 402	2997	WIRE HARNESS	B080140022	CHAFED	20150925018	PNR
DHC 8 402	3010	BOOT ASSEMBLY	51SP162421	FAILED	20150827009	PNR
DHC 8 402	3010	BOOT ASSEMBLY	51SP162531	FAILED	20150824015	PNR
DHC 8 402	3020	ENGINE INTAKE ADAPTER HEATER	4100S02805	INTERNAL DAMAGE	20150728008	QUE
DHC 8 402	3200	SELECTOR UNIT		FAULTY	20150908008	PNR
DHC 8 402	3246	BEARING	2968520629	DESINTEGRATED	20150715003	ATL
DHC 8 402	3297	WIRING		CHAFFED	20150812007	PNR
DHC 8 402	3420	ALTITUDE HEADING REFERENCE UNIT	2615001230501	FAILED	20150817014	PNR
DHC 8 402	5230	BOLT	NAS62043	UNSECURE	20150929005	PNR
DHC 8 402	5240	AFT DOOR SEAL CONTROL VALVE	4100S03101	CONTAMINATED	20150917004	QUE
DHC 8 402	5297	HARNESS ASSEMBLY	82420364003	DAMAGED	20150728010	PNR
DHC 8 402	7110	ACOUSTIC LINER	305307808	SEPERATED	20150826005	QUE

DIAMOND - CAN

Make/Model	Jasc	Part Name	Part Number	Part Condition	SDR No.	RGN
DA 20 C1	2720	PEDAL ADJUST CABLE	2027002100	FRAYED	20150929012	PAC
DA 20 C1	2822	AIRFRAME BOOST PUMP	5367001	NOT WORKING	20150817018	ATL
DA 20 C1	3220	NOSE WHEEL FORK	20322008001	CRACKED	20150923014	ATL
DA 20 C1	5210	CANOPY LATCH HOOK	2256400001	BROKEN	20150817016	ATL
DA 20 C1	5540	RUDDER TOWER	2055450500	CRACKED	20150824008	ATL

EMBRAER

Make/Model	Jasc	Part Name	Part Number	Part Condition	SDR No.	RGN
EMB 500	2710	AILERON CONTROL CABLE	50015048401	WORN OUT	20150724004	PNR
EMB 500	2710	AILERON CONTROL CABLE	5015048401	WORN	20150724003	PNR
ERJ 170 200 SU	2897	FUEL SYSTEM		SHORT	20150703007	ONT
ERJ 170 200 SU	3242	BRAKE ASSEMBLY	900005835PR	SHATTERED	20150731006	ONT
ERJ 170 200 SU	3242	PRESSURE PLATE	900005835PR	DISINTEGRATED	20150909003	ONT
ERJ 190 100 IGW	2130	AIR MANAGEMENT SYSTEM PROCESSOR CARD	10010504015	FAILED	20150806003	QUE
ERJ 190 100 IGW	2750	POWER DRIVE MOTOR	5914054	FAILED	20150814003	QUE
ERJ 190 100 IGW	2913	ENGINE DRIVEN PUMP	5116404	FAILED	20150731008	QUE
ERJ 190 100 IGW	2913	ENGINE DRIVEN PUMP	5116404	FAILED	20150803003	QUE
ERJ 190 100 IGW	2913	ENGINE DRIVEN PUMP	5116404	FAILED	20150805006	QUE
ERJ 190 100 IGW	3140	GENERIC I/O MODULE	70253651901	FAILED	20150925011	QUE
ERJ 190 100 IGW	3140	GENERIC I/O MODULE	70253651901	FAILED	20150716001	QUE
ERJ 190 100 IGW	3140	NETWORK INTERFACE CONTROLLER PROCESSOR MODULE	70265421901	FAILED	20150805002	QUE
ERJ 190 100 IGW	3230	LANDING GEAR CONTROL LEVER	9037B000104	FAILED	20150702001	QUE
ERJ 190 100 IGW	3243	DUAL EMERGENCY PARKING VALVE	389075012	FAILED	20150702002	QUE
ERJ 190 100 IGW	3260	HARNESS		LOOSE	20150821007	QUE
ERJ 190 100 IGW	3610	BLEED PRESSURE VALVE	10012463	FAILED	20150714002	QUE
ERJ 190 100 IGW	5610	WINDSHIELD LEFT HAND GLASS	NP18730111	CRACKED	20150720011	QUE

EUROCOPTER FRANCE

Make/Model	Jasc	Part Name	Part Number	Part Condition	SDR No.	RGN
EC 130 B4	1420	BOX FUSE DETECTION	135000A	OVERHEATED/MELT	20150713008	ONT
EC 130 B4	2800	PLUG	350A77121321	CRACKED	20150709002	ONT
EC 130 T2	7921	AIR DUCT	350A53413800	CRACKED	20150724001	ONT

FAIRCHILD

Make/Model	Jasc	Part Name	Part Number	Part Condition	SDR No.	RGN
SA227AC	5311	BELT FRAMES		CRACKED	20150820011	PNR
SA227DC	2431	BATTERY	23521000	BROKEN WIRE	20150727020	ONT

GIPPSLAND

Make/Model	Jasc	Part Name	Part Number	Part Condition	SDR No.	RGN
GA 8 TC320	0	LEFT HAND MAGNETO	6361	USED	20150823003	ONT
GA 8 TC320	0	LEFT HAND MAGNETO	6361	USED	20150823004	ONT
GA 8 TC320	0	LEFT HAND MAGNETO	6361	USED	20150823005	ONT
GA 8 TC320	0	LEFT HAND MAGNETO	6361	USED	20150823002	ONT
GA 8 TC320	0	OIL COOLER	20006A	ALMOST NEW	20150823001	ONT

GULFSTREAM - USA

Make/Model	Jasc	Part Name	Part Number	Part Condition	SDR No.	RGN
G IV	0	LOWER RUDDER HINGE ASSEMBLY	1159CSM200255	NO VISIBLE DAMAGE	20150917007	ONT

HUGHES

Make/Model	Jasc	Part Name	Part Number	Part Condition	SDR No.	RGN
369D	3340	STROBE BRACKET	369D236605	CRACKED	20150812005	PAC

LEARJET

Make/Model	Jasc	Part Name	Part Number	Part Condition	SDR No.	RGN
35A	3244	TIRE	178K325	BURST	20150727022	PNR
35A	3340	CANNON PLUG	MS3122E1412P	MELTED	20150914012	ONT
45	2700	SPOILER ROTARY VARIABLE DIFFERENTIAL TRANSDUCER	4527603010005	LOST ADJUSTMENT	20150924005	PAC
45	2700	SPOILER ROTARY VARIABLE DIFFERENTIAL TRANSDUCER	4527603010005	NOT SECURED	20150924006	PAC
45	5730	RIGHT HAND WING SKIN	4557200015006	CORRODED	20150921003	ONT

LOCKHEED

Make/Model	Jasc	Part Name	Part Number	Part Condition	SDR No.	RGN
188A	2731	ELEVATOR TRIM CABLES	80108962117	SEVERED	20150702009	PNR
188A	2900	HYDRAULIC VALVE SOLENOID	21835	FAULTY	20150708009	PNR

MORAVAN

Make/Model	Jasc	Part Name	Part Number	Part Condition	SDR No.	RGN
Z242L	0	FLAP CABLE	Z4243130000	FRAYED	20150922002	ONT

PILATUS - SW

Make/Model	Jasc	Part Name	Part Number	Part Condition	SDR No.	RGN
PC 12 47	2820	FUEL HOSE	946377110	LEAKING	20150708005	ONT
PC 12 47	3242	BRAKE ASSEMBLY	30244	CRACKED ROTOR	20150806005	ONT
PC 12 47E	2421	GENERATOR	23085024	FAILED	20150713022	ONT
PC 12 47E	5524	ELEVATOR NOSE DOWN STOP	552012186	GOOD	20150917003	ONT

PIPER

Make/Model	Jasc	Part Name	Part Number	Part Condition	SDR No.	RGN
PA31	0	FUEL PUMP	KELLYAEROSPACE	OVERHAULED	20150915004	QUE
PA31 350	0	ELEVATOR TRIM CABLE	41734078	CABLE DAMAGED	20150921004	ONT
PA31 350	0	RIGHT HAND VACUUM PUMP	442CW6	FAILED	20150824005	PAC
PA31 350	2913	DRY AIR PUMP	RAP441CC7	6 MONTHS OLD	20150702005	PNR
PA34 200T	3210	BRACKET	67753000	BROKE	20150721004	PNR
PA46 500TP	3250	STEERING HORN	85154012	DENTED	20150728006	QUE

PZL - PL

Make/Model	Jasc	Part Name	Part Number	Part Condition	SDR No.	RGN
SZD 51 1	0	TOW RELEASE CABLE		FRAYED	20150821004	ONT

QUEST

Make/Model	Jasc	Part Name	Part Number	Part Condition	SDR No.	RGN
KODIAK 100	0	LOCKING FOOT CAP		BENT	20150923007	ONT

ROBINSON

Make/Model	Jasc	Part Name	Part Number	Part Condition	SDR No.	RGN
R44 II	6210	MAIN ROTOR BLADE	C0165	VOID	20150807004	ONT

ROCKWELL COLLINS

Make/Model	Jasc	Part Name	Part Number	Part Condition	SDR No.	RGN
690A	2821	FILTER	5210522	MISSING	20150831007	PNR

SIKORSKY

Make/Model	Jasc	Part Name	Part Number	Part Condition	SDR No.	RGN
S61N	2913	HYDRAULIC PUMP	26006RZB	SEIZED	20150708013	PAC
S61N	6220	MAIN ROTOR DAMPER	S611026400041	UNSERVICEABLE	20150827012	PAC
S92A	3220	NOSE LANDING GEAR ACTUATOR	922500080010	INTERFERENCE	20150714010	ATL
S92A	3246	AFT FLOAT BAG	9225012801101	RUPTURED	20150811012	ATL
S92A	5300	FUSELAGE		CRACKED	20150817013	PAC
S92A	6320	VESPEL SPLINE ADAPTER	9235115284104	MISMANUFACTURED	20150714009	ATL
S92A	7261	OIL FILTER BYPASS SWITCH	3066T62P01	FAILURE	20150811011	ATL

SUPER CYCLONE

Make/Model	Jasc	Part Name	Part Number	Part Condition	SDR No.	RGN
SUPER CYCLONE	0	VALVE SPRING	AEC637837	BROKEN	20150928003	QUE

SWEARINGEN

Make/Model	Jasc	Part Name	Part Number	Part Condition	SDR No.	RGN
SA226T	3260	WIRE		BROKEN	20150910007	PNR
SA226T	5600	WINDSHIELD		CRACKED	20150910008	PNR

VIKING CANADA

Make/Model	Jasc	Part Name	Part Number	Part Condition	SDR No.	RGN
DHC 6 400	5210	AIRSTAIR DOOR	C6FS36267	OPENED	20150721005	PAC

ENGINE

ALLISON

Make/Model	Jasc	Part Name	Part Number	Part Condition	SDR No.	RGN
250-C20B	7200	COMPRESSOR CASE ASSEMBLY	23057142	MISSING VANE	20150910011	PAC
250-C20B	7321	CONTROL SPRING	NK	BROKEN	20150804004	PAC
250-C20B	7323	GOVERNOR ASSEMBLY	23065121	UNSERVICEABLE	20150918003	PNR
250-C47B	7240	OUTER COMBUSTION CASE	23030911	UNSERVICEABLE	20150817020	ONT
501-D13	7712	COUPLING ASSEMBLY SAFETY	6828477	FAILED	20150702007	PNR
501-D13D	6120	COUPLING ASSEMBLY	6805158	SERVICABLE	20150804001	PAC
AE-3007A1	7250	HIGH PRESSURE TURBINE STAGE 2 VANES	23070987	FAILED	20150904006	QUE

AVCO LYCOMING

Make/Model	Jasc	Part Name	Part Number	Part Condition	SDR No.	RGN
IO-360-L2A	8550	OIL FILTER	CH481101	NEW	20150914010	PNR
LO-360-E1A6D	7160	INTAKE PIPE	LW1491685	CRACKED	20150904002	ATL
LO-360-E1A6D	8530	CYLINDER ASSEMBLY	CL420STE1R	LEAKING	20150721007	ATL
O-235-L2C	7414	MAGNETO		USAGE	20150910004	QUE
O-235-L2C	7414	MAGNETO	4381	WORN	20150703004	ONT
O-320-E2D	7414	DISTRIBUTOR GEAR	K3008	BROKEN	20150715002	ONT
O-360-A4M	7414	DISTRIBUTOR GEAR ASSEMBLY	K3822	UNSERVICEABLE	20150714014	PNR
TIO-540-A2C	7414	DISTRIBUTOR BLOCK	10391586	DAMAGED	20150608004	ATL

BOMBARDIER ROTAX

Make/Model	Jasc	Part Name	Part Number	Part Condition	SDR No.	RGN
912 S3	8530	TAPPET	881832	WORN	20150813002	PAC

CFM INTERNATIONAL

Make/Model	Jasc	Part Name	Part Number	Part Condition	SDR No.	RGN
CFM56-5A1	7600	THROTTLE CONTROL UNIT	321400M01	FAILED	20150831004	QUE

GENERAL ELECTRIC

Make/Model	Jasc	Part Name	Part Number	Part Condition	SDR No.	RGN
CF34-3B1	7320	P3 SENSE LINE	5047T75G01	BROKEN	20150727027	QUE
CF34-8C5	7600	ACTUATOR	1211508007	DAMAGED	20150720012	ATL

PRATT & WHITNEY-CAN

Make/Model	Jasc	Part Name	Part Number	Part Condition	SDR No.	RGN
PT6A-114A	7240	COMBUSTION LINER		WARPED/CRACKED	20150717004	PNR
PT6A-27	7200	COMPRESSOR	3013111	NICKED CRACKED	20150806007	PNR
PT6A-27	7200	COMPRESSOR	3013111	NICKED CRACKED	20150806008	PNR
PT6A-65B	6120	COLLAR	3009087	WORN	20150723006	ATL
PW121	7200	ENGINE		UNSERVICEABLE	20150715006	ATL
PW121	7200	ENGINE		UNSERVICEABLE	20150814001	ATL
PW121	7200	ENGINE	PW121	UNSERVICEABLE	20150814009	ATL
PW123	7220	REAR INLET CASE	311665501	UNSERVICEABLE	20150914005	ATL
PW123B	7200	ADAPTER VENTURY P3	311269001	CRACKED	20150909001	QUE
PW123B	7200	ENGINE		UNSERVICEABLE	20150820010	ATL
PW124B	7261	O-RING	AS3209110	WORN	20150917005	PNR
PW617F-E	7160	RIVET	CR321442	MISSING HEAD	20150811007	PNR

TELEDYNE CONTINENTAL

Make/Model	Jasc	Part Name	Part Number	Part Condition	SDR No.	RGN
IO-240-B	7414	MAGNETO	4309	ROUGH RUNNING	20150824016	ATL
IO-240-B	7414	MAGNETO RIGHT	4309SN13070917	USED	20150817011	ATL
IO-470-L	7314	DRIVE COUPLING	631683	WORN/ROUNDED	20150831011	PNR
IO-470-L	7314	GEAR	631684	WORN	20150831012	PNR
IO-550-D	7322	ROD AND LINK ASSEMBLY	632558A1	WORN SEVERELY	20150922007	PNR
O-470-R	8530	GASKET	655528	LEAKING	20150924007	PNR
TSIO-520-NB	8530	CYLINDER	ECI712	CRACKED	20150715005	ONT

PROPELLER**AEROPRODUCTS**

Make/Model	Jasc	Part Name	Part Number	Part Condition	SDR No.	RGN
A6441FN-606A	6114	PROPELLER ASSEMBLY	6506174	CONTAMINATED	20150720008	PAC

DOWTY ROTOL

Make/Model	Jasc	Part Name	Part Number	Part Condition	SDR No.	RGN
R408/6-123-F/17	6100	BALL BEARING SET	6660003873	DAMAGED	20150908010	QUE
R408/6-123-F/17	6112	DEICER ASSEMBLY BLADE	697070208	DAMAGED	20150810005	PNR
R408/6-123-F/17	6112	DEICER ASSEMBLY BLADE	697070208	DAMAGED	20150904010	PNR

HAMILTON STANDARD

Make/Model	Jasc	Part Name	Part Number	Part Condition	SDR No.	RGN
14SF-5	6114	BEARING BALL	69992A16	DAMAGED	20150928005	PNR

EQUIPMENT

AM-SAFE

Make/Model	Jasc	Part Name	Part Number	Part Condition	SDR No.	RGN
2.2051E+11	2520	LAP BELT ASSEMBLY	220510312847	BROKEN	20150910005	PNR

ARTEX

Make/Model	Jasc	Part Name	Part Number	Part Condition	SDR No.	RGN
4535002RH	2562	G-SWITCH		FAILED ON TEST	20150907002	PNR
ME406	2562	EMERGENCY LOCATOR TRANSMITTER REMOTE SWITCH	345619604	FAILURE	20150817023	PNR

B/E AEROSPACE

Make/Model	Jasc	Part Name	Part Number	Part Condition	SDR No.	RGN
AMSAFE	2520	PASSENGER SEAT BELT BUCKLE	320030168159	NOT LATCHING	20150915007	QUE

BENDIX

Make/Model	Jasc	Part Name	Part Number	Part Condition	SDR No.	RGN
30E2061	2435	STARTER GENERATOR	30E2061	OVERHAULED	20150929013	ONT

DIAMOND - CAN

Make/Model	Jasc	Part Name	Part Number	Part Condition	SDR No.	RGN
202722010	2720	RUDDER PEDAL	222727110	UNSERVICEABLE	20150929011	PAC

GOODRICH

Make/Model	Jasc	Part Name	Part Number	Part Condition	SDR No.	RGN
42325123	2590	HOIST	42325123	CLUTCH SLIPPAGE	20150727014	QUE

GOODYEAR

Make/Model	Jasc	Part Name	Part Number	Part Condition	SDR No.	RGN
40204	3244	TIRE	22X675X10	OUT OF BALANCE	20150730017	PNR

HONEYWELL

Make/Model	Jasc	Part Name	Part Number	Part Condition	SDR No.	RGN
7012640921	3442	WEATHER RADAR TRANSCIEVER	7012640921	FAILED	20150820012	PAC

MOOG

Make/Model	Jasc	Part Name	Part Number	Part Condition	SDR No.	RGN
MANIFOLDASS	2920	O-RING		DAMAGED	20150824004	PAC

SKURKA

Make/Model	Jasc	Part Name	Part Number	Part Condition	SDR No.	RGN
150SG122Q	2435	BRUSHES	150SG100920XL2	UNSERVICEABLE	20150717003	ONT

SKYTRAC

Make/Model	Jasc	Part Name	Part Number	Part Condition	SDR No.	RGN
ISAT100MOD	3400	ISAT100 LEAD ACID BATTERY	STS0064	UNAPPROVED	20150818008	PAC

SURVITEC

Make/Model	Jasc	Part Name	Part Number	Part Condition	SDR No.	RGN
A394100	2560	SURVITEC PART #LI135	39964	STROBE LIGHT	20150710006	ONT

WOODWARD

Make/Model	Jasc	Part Name	Part Number	Part Condition	SDR No.	RGN
31057165	6122	THRUST BEARING	1415336	NEW	20150814005	ATL

ZODIAC

Make/Model	Jasc	Part Name	Part Number	Part Condition	SDR No.	RGN
400263601	2530	COFFEE BREWER	400263601	OVERHEATED	20150927008	ATL

UNAPPROVED PART**EQUIPMENT**

Make/Model	Jasc	Part Name	Part Number	Part Condition	SDR No.	RGN
EQUIPMENT	2000	BRAKE HOSE ASSEMBLY	MS287414210	INCORRECT	20150710022	PNR

SKYTRAC

Make/Model	Jasc	Part Name	Part Number	Part Condition	SDR No.	RGN
ISAT100MOD	2000	ISAT100 LEAD ACID BATTERY	STS0064	UNAPPROVED	20150818008	PAC



ORDERING TC PUBLICATION AND FORMS

HEADQUARTERS

Transport Canada (AARDG)
Place de Ville, Tower C
Ottawa, ON K1A 0N8
Tel: 1-800-305-2059

REGIONAL OFFICES

Atlantic

Transport Canada
95 Foundry St., 6th Floor
Moncton, NB E1C 5H7
Tel: 1-800-305-2059

Prairie and Northern

Transport Canada
344 Edmonton Street
Winnipeg, MB R3C 0P6
Tel: 1-800-305-2059

Ontario

Transport Canada
4900 Yonge St., Suite 400
Toronto, ON M2N 6A5
Tel: 1-800-305-2059

Quebec

Transport Canada
700 Leigh Capreol
Dorval, QC H4Y 1G7
Tel: 1-800-305-2059

Pacific

Transport Canada
800 Burrard St., Suite 620
Vancouver, BC V6Z 2J8
Tel: 1-800-305-2059

North America:

1-800-305-2059

National Capital Region:

613 991-4071

Fax:

613 991-2081

E-mail:

MPS@tc.gc.ca

CIVIL AVIATION INTERNET SITES

Civil Aviation Homepage

www.tc.gc.ca/eng/civilaviation/menu.htm

Continuing Airworthiness

www.tc.gc.ca/eng/civilaviation/certification/continuing-menu-1432.htm

Canadian Aviation Regulations (CARs)

www.tc.gc.ca/eng/civilaviation/regserv/cars/menu.htm

Airworthiness Directive

www.tc.gc.ca/cawis-swimn

Civil Aviation Safety Alerts (CASA)

www.tc.gc.ca/civil-aviation-safety-alert

Web Service Difficulty Reporting System (WSDRS)

www.tc.gc.ca/wsdrs