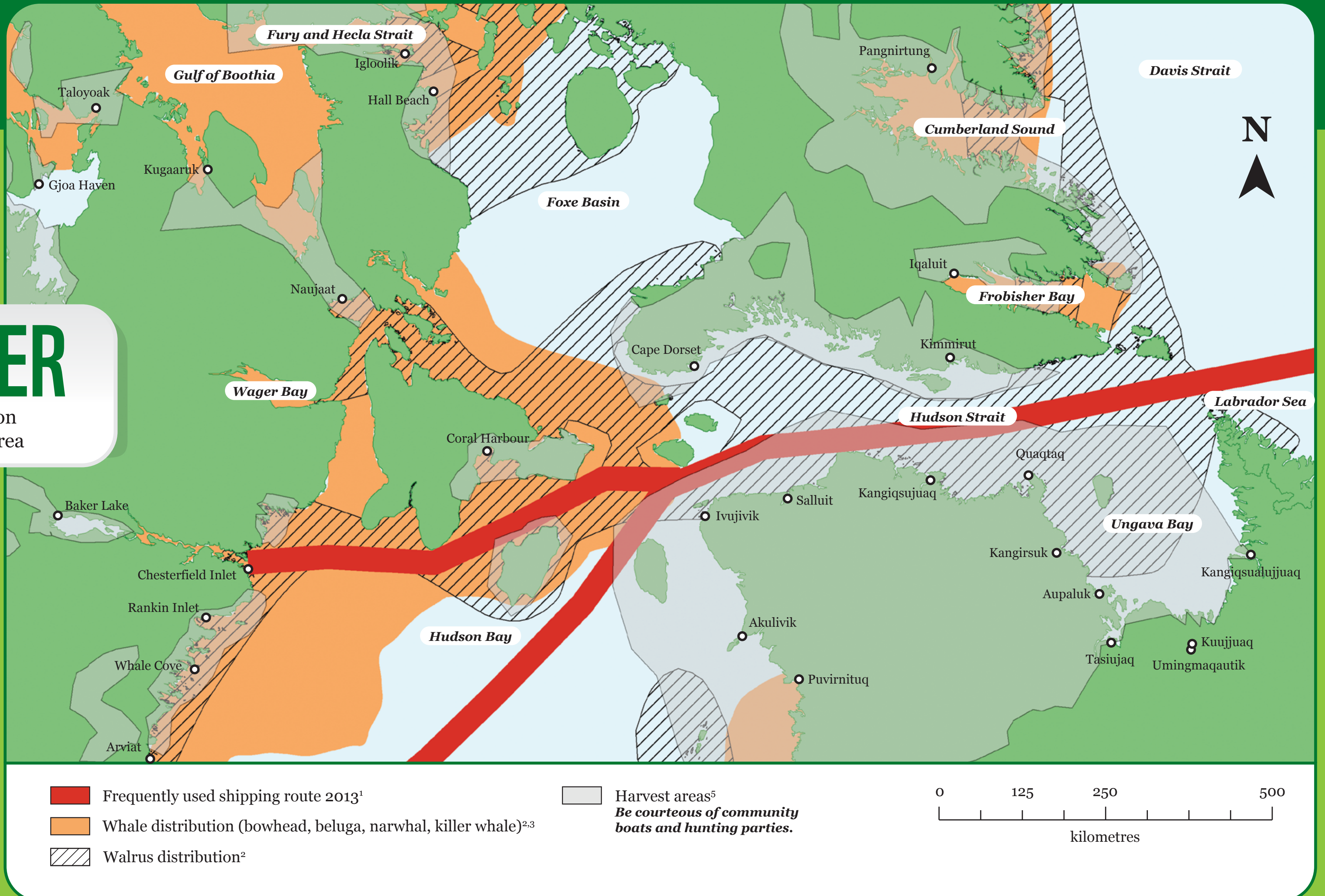




# Hudson Strait Mariner's Guide

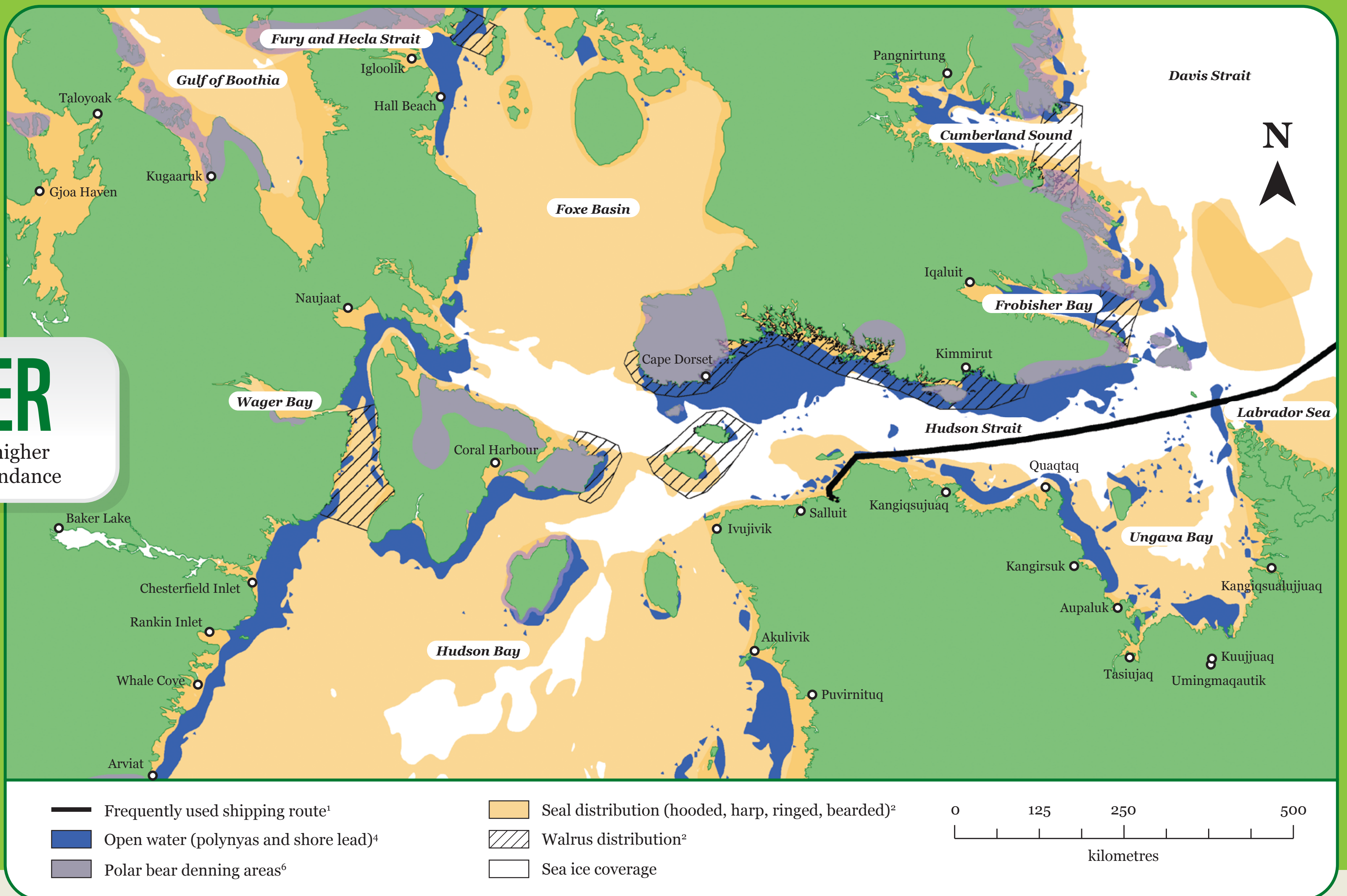
## SUMMER

Seals are common throughout the area



## WINTER

Ice free areas have higher marine mammal abundance



**NOTE:**  
For navigation purposes, please use maps provided by the Canadian Hydrographic Service.

### LOCAL COMMUNITY HUNTER AND TRAPPER ORGANIZATION PHONE NUMBERS

Contact the nearest community for local knowledge of marine mammals.

- |   |   |   |
|---|---|---|
| <b>Akulivik:</b> 819-496-2222           | <b>Ivujivik:</b> 819-922-9940                                     | <b>Nunavik Marine Region Wildlife Board:</b> 819-254-8667 |
| <b>Arviat:</b> 867-857-2636             | <b>Kangiqsualujuaq:</b> 819-337-5271                              | <b>Puvirnituq:</b> 819-988-2825                           |
| <b>Aupaluk:</b> 819-491-7070            | <b>Kangiqsujaq:</b> 819-338-3342                                  | <b>Quaqtaq:</b> 819-492-9912                              |
| <b>Baker Lake:</b> 867-793-2520         | <b>Kangirsuk:</b> 819-935-4388                                    | <b>Rankin Inlet:</b> 867-645-2350                         |
| <b>Cape Dorset:</b> 867-897-8978        | <b>Kimmitut:</b> 867-939-2355                                     | <b>Salluit:</b> 819-255-8953                              |
| <b>Chesterfield Inlet:</b> 867-898-9063 | <b>Kuujuuaq:</b> 819-964-2943                                     | <b>Tasiujaq:</b> 819-633-9924                             |
| <b>Coral Harbour:</b> 867-925-8622      | <b>Nauyasat:</b> 867-462-4334                                     | <b>Whale Cove:</b> 867-896-9944                           |
| <b>Iqaluit:</b> 867-979-6848            | <b>Nunavik Hunting Fishing Trapping Association:</b> 819-964-0645 |   |

### WILDLIFE SIGHTINGS, ENCOUNTERS, AND INCIDENTS

**Report to:** Department of Fisheries and Oceans, Steve Ferguson, 204-983-5057, [steve.ferguson@dfo-mpo.gc.ca](mailto:steve.ferguson@dfo-mpo.gc.ca)

You may be asked to provide:

- Date and time you found the animal or witnessed the incident
- Specific location, including latitude and longitude (if available) or driving directions (if accessible by land)
- Species or type of animal, including a description of the size, colour, features
- Condition of the animal – alive, sick or injured, freshly dead, badly rotting away
- Number of animals involved
- Your contact information, including name and phone number

**Sources:**  
<sup>1</sup> Vard Marine Inc., A Fincantieri Company. (2015). Hudson Strait shipping study phase 1- study to determine the socio-economic, cultural, oceanographic and ecological impact and risk of shipping. Report No.: 300-06-00  
<sup>2</sup> Stephenson, S.A., & Hartwig, L. (2010). The Arctic Marine Workshop: Freshwater Institute Winnipeg, Manitoba, February 16-17, 2010. Can. Manuscript Rep. Fish. Aquat. Sci., 2934, p. 67. <http://www.dfo-mpo.gc.ca/Library/341178.pdf>  
<sup>3</sup> Reeves, R.R., Ewins, P.J., Agbayani, S., Heide-Jørgensen, M.P., Kovacs, K.M., Lydersen, C., Suydam, R., Elliott, W., Polet, G., van Dijk, Y. & Blijleven, R. (2013). Distribution of endemic cetaceans in relation to hydrocarbon development and commercial shipping in a warming arctic. Mar. Policy, 44, p. 375-389.  
<sup>4</sup> Hannah, C., Dupont, F., & Dunphy, M. (2009). Polynyas and tidal currents in the Canadian Arctic Archipelago. Arctic, 62:1, p.83-95.  
<sup>5</sup> Riewe, R. (1992). Nunavut Atlas. Edmonton: Canadian Circumpolar Institute and the Tungavik Federation of Nunavut. p. 259.  
<sup>6</sup> Government of Nunavut. (2014). Submission to the Nunavut Planning Commission for the Draft Nunavut Land Use Plan. Retrieved from: [http://www.nunavut.ca/files/2014DNLUP/2014\\_Draft\\_Nunavut\\_Land\\_Use\\_Plan.pdf](http://www.nunavut.ca/files/2014DNLUP/2014_Draft_Nunavut_Land_Use_Plan.pdf)